








**Tiranti - scenario P2 (media probabilità)**


-  altezza < 0.5 m
-  0.5 m ≤ altezza < 1.0 m
-  1.0 m ≤ altezza < 1.5 m
-  1.5 m ≤ altezza < 2.0 m
-  altezza ≥ 2.0 m

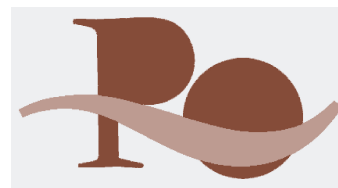
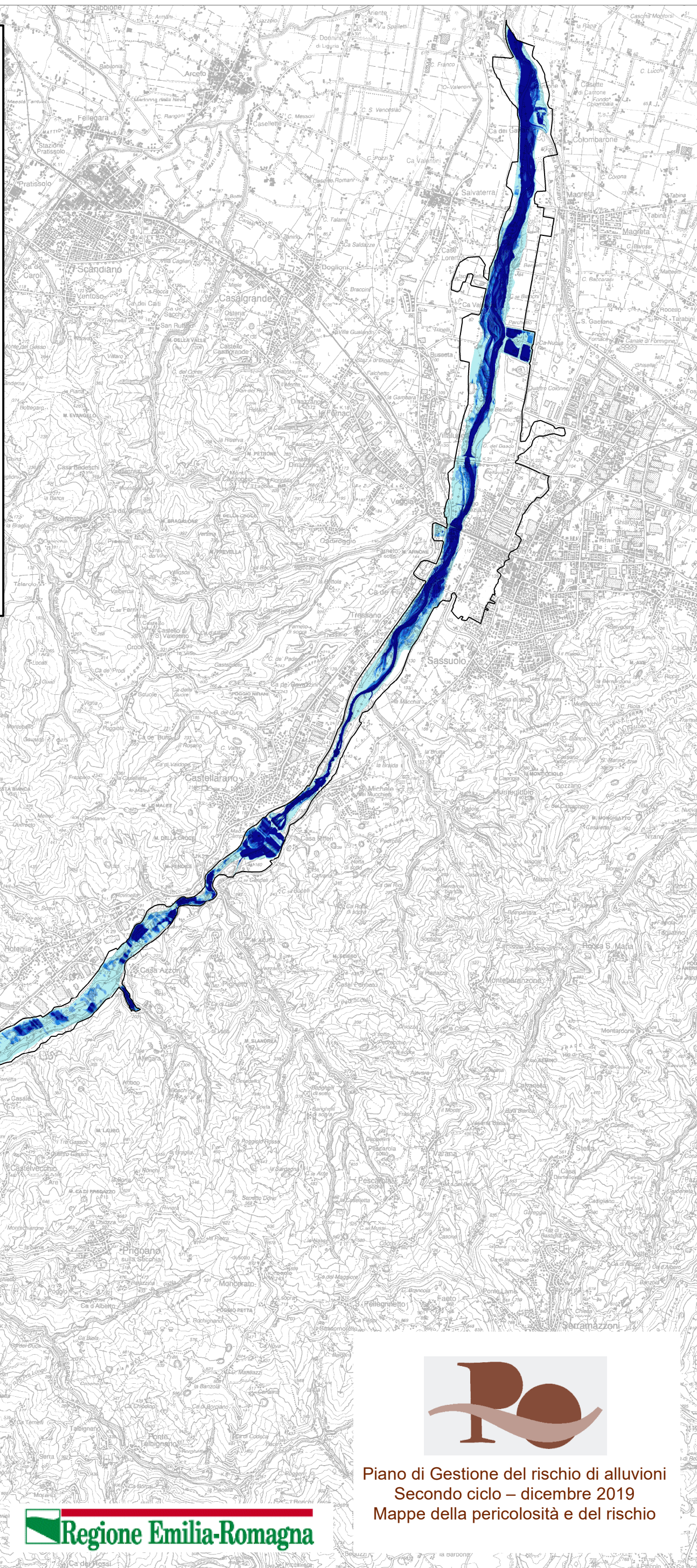
 Area a Rischio Potenziale Significativo (APSFR)

 Autorità di bacino distrettuale del fiume Po

 Limiti regionali

**Unità di Gestione (Unit of Management - UoM)**

- ITN008 Po
- IT1026 Fissero-Tartaro-Canalbianco
-  IT1021 Reno
- IT101319 Marecchia-Conca
- ITR081 Bacini Romagnoli



Piano di Gestione del rischio di alluvioni  
Secondo ciclo – dicembre 2019  
Mappe della pericolosità e del rischio

 Regione Emilia-Romagna

