

# MICROZONAZIONE SISMICA

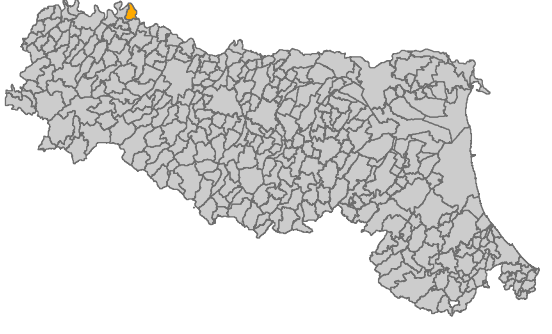
## Carta dei fattori di amplificazione

### F.A. P.G.A. (2 di 2)

scala 1:5000

Regione Emilia-Romagna

Comune di Castelvetro Piacentino



Soggetto realizzatore

Geol. Emami Emanuele  
Via dei Ciliegi, 4 - Villanova sull'Arda  
tel. 0523/853200 cell. 335/1281389








GEOLOGIA E GEOFISICA  
Sede legale: Via Fioruzzi, 15 - 29121 PC  
E-mail: andrea.carpena@ggeofisica.it  
Site web: www.ggeofisica.it

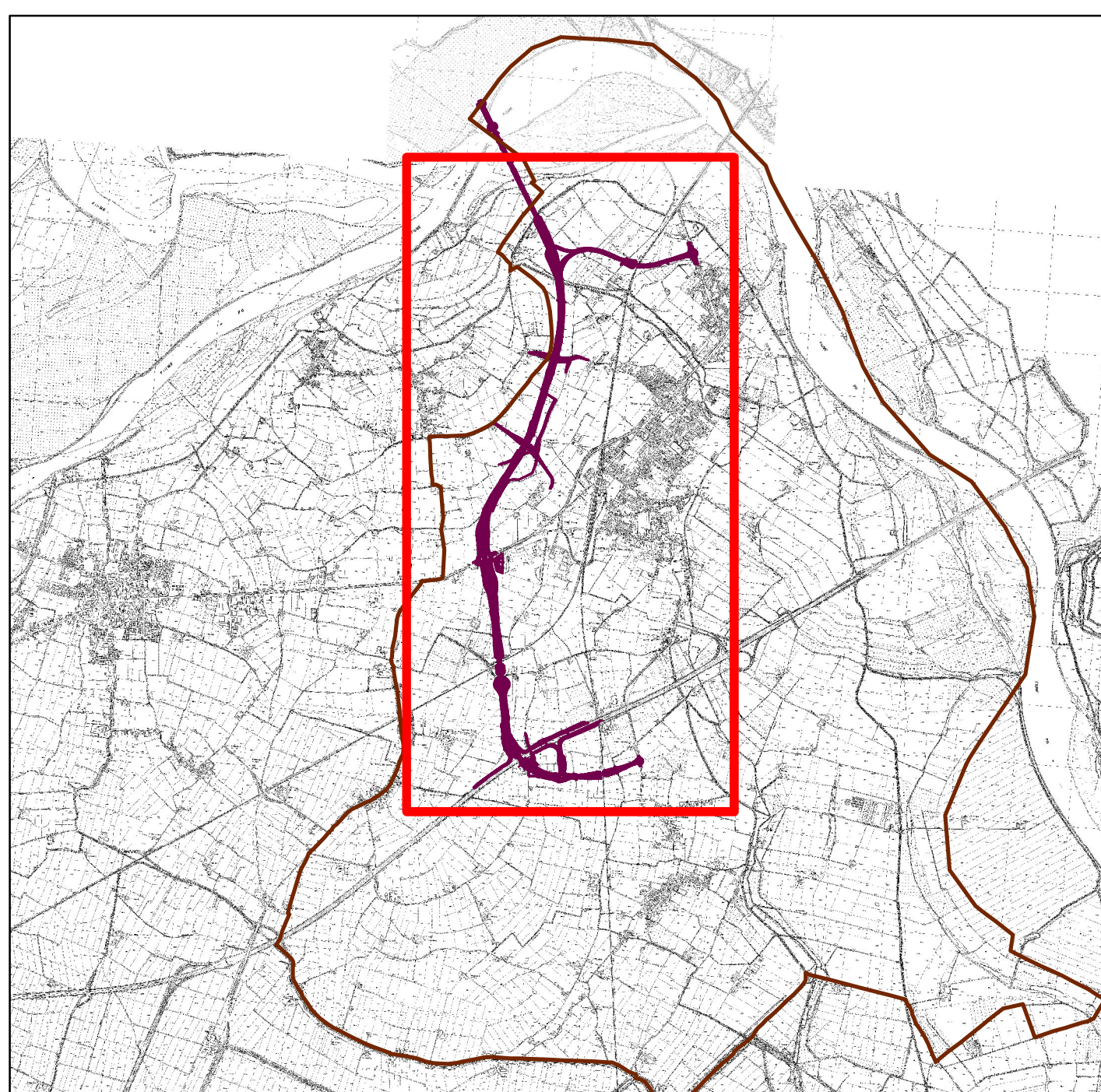
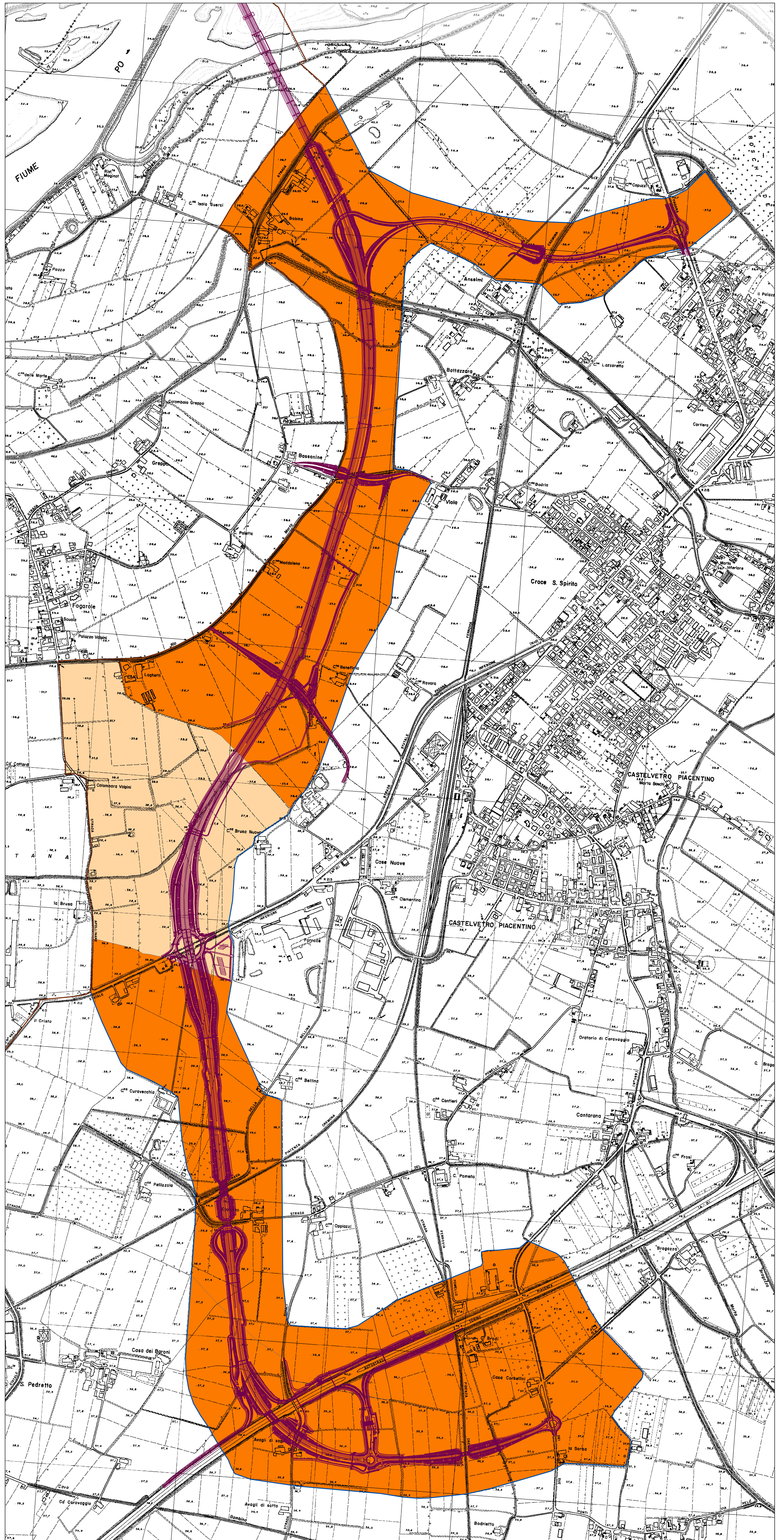
Data

Settembre 2016

### Legenda

-  Limite comunale
-  Raccordo autostradale Porto di Cremona (A21) a Castelvetro P.no
-  Perimetro delle aree di indagine
- Zone stabili suscettibili di amplificazioni locali (P.G.A.)**
-  1.5 - 1.6
-  1.7 - 1.8

0 250 500 Meters



Quadro d'insieme - scala 1:50.000