

MICROZONAZIONE SISMICA

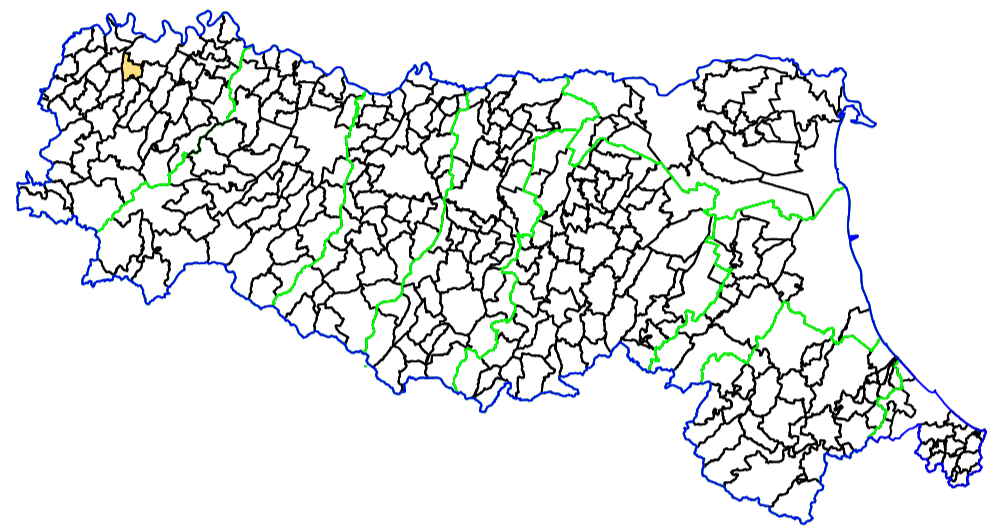
Carta di Microzonazione sismica

Fattore di Amplificazione SI1 ($0,1s \leq T \leq 0,5s$)

scala 1 : 5.000

TAV. 07e

Regione Emilia-Romagna
Comune di Gossolengo



Regione	Soggetto realizzatore	Data
	 GEOREFLEX srl Geologia Geofisica Topografia via Carlo Farini, 15 29121 Nicosia - ITALY Tel. +39 0523 454042 Fax. +39 0523 462427 Email: info@georeflex.it	giugno 2020 rev.2

LEGENDA

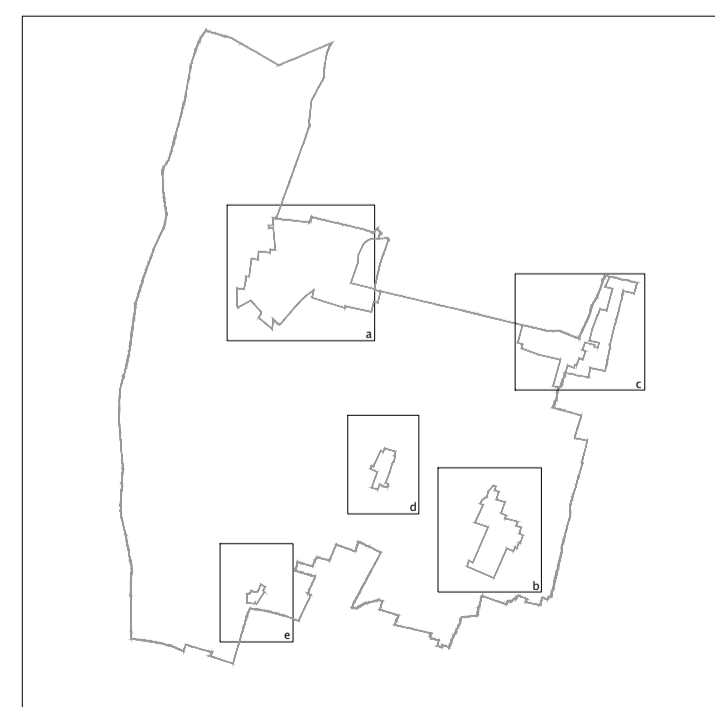
----- Ambito interessato dallo studio di microzonazione sismica

----- Confine comunale

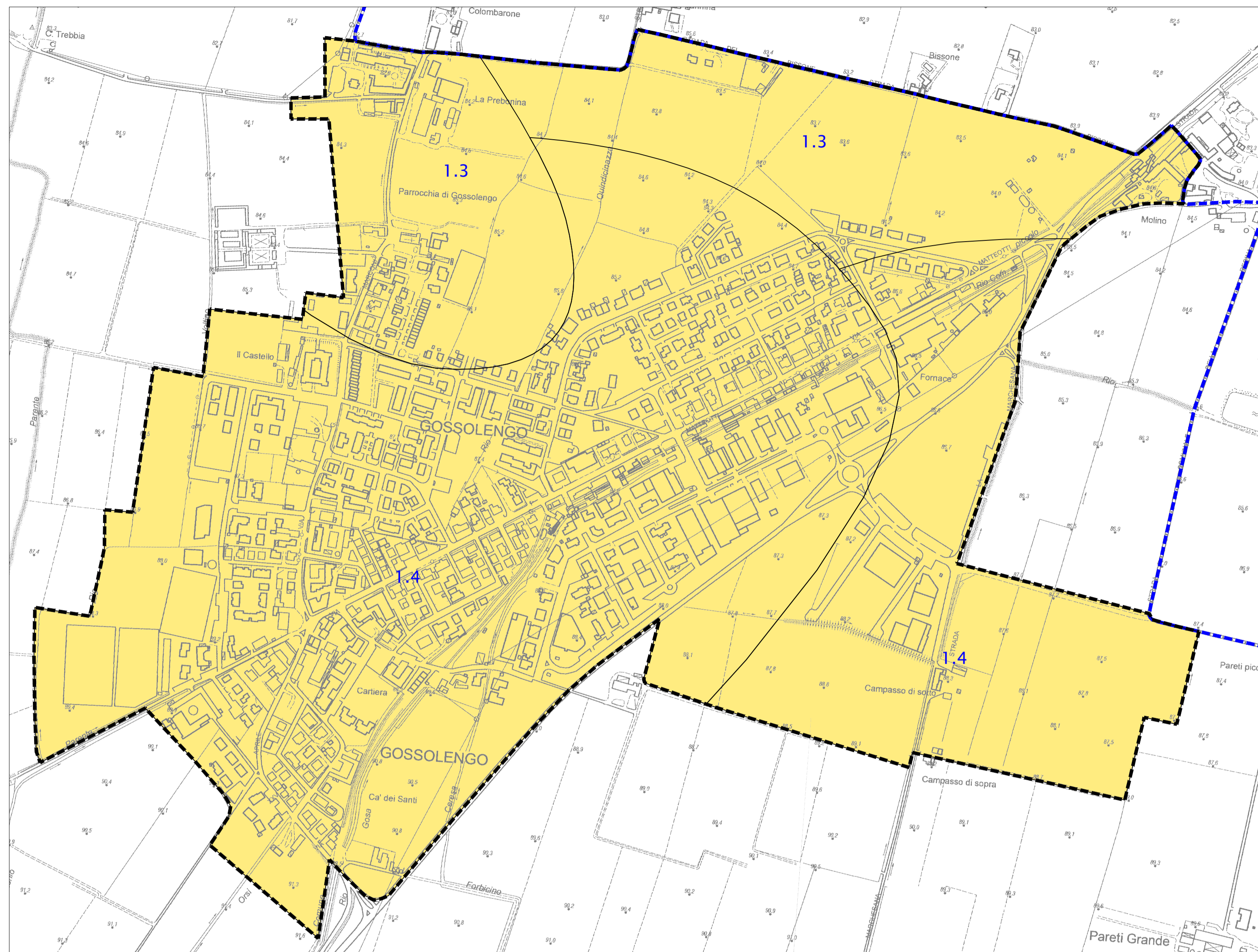
ZONE STABILI SUSCETTIBILI DI AMPLIFICAZIONI LOCALI

FA (PGA) = 1,3 - 1,4

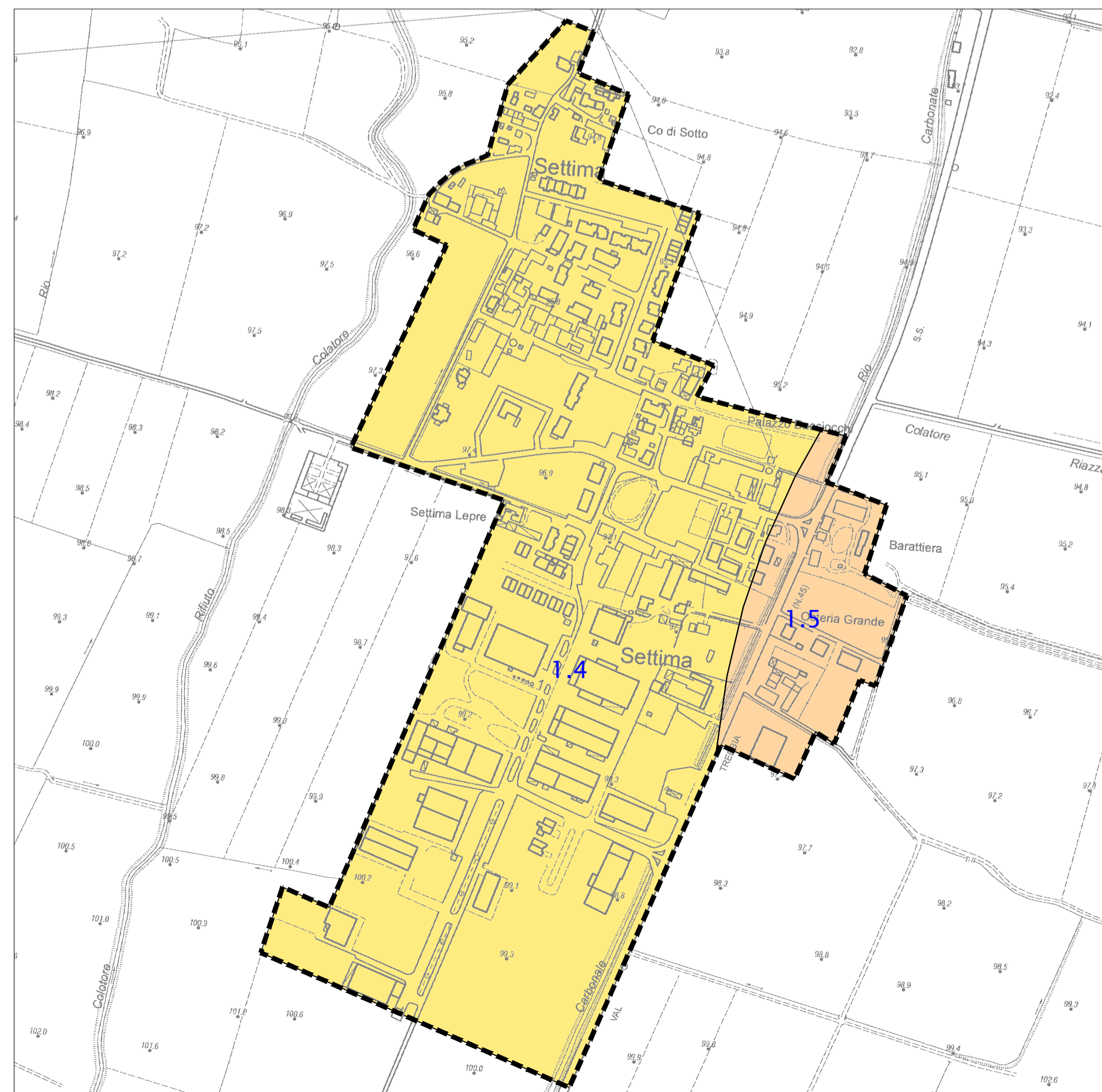
FA (PGA) = 1,5 - 1,6



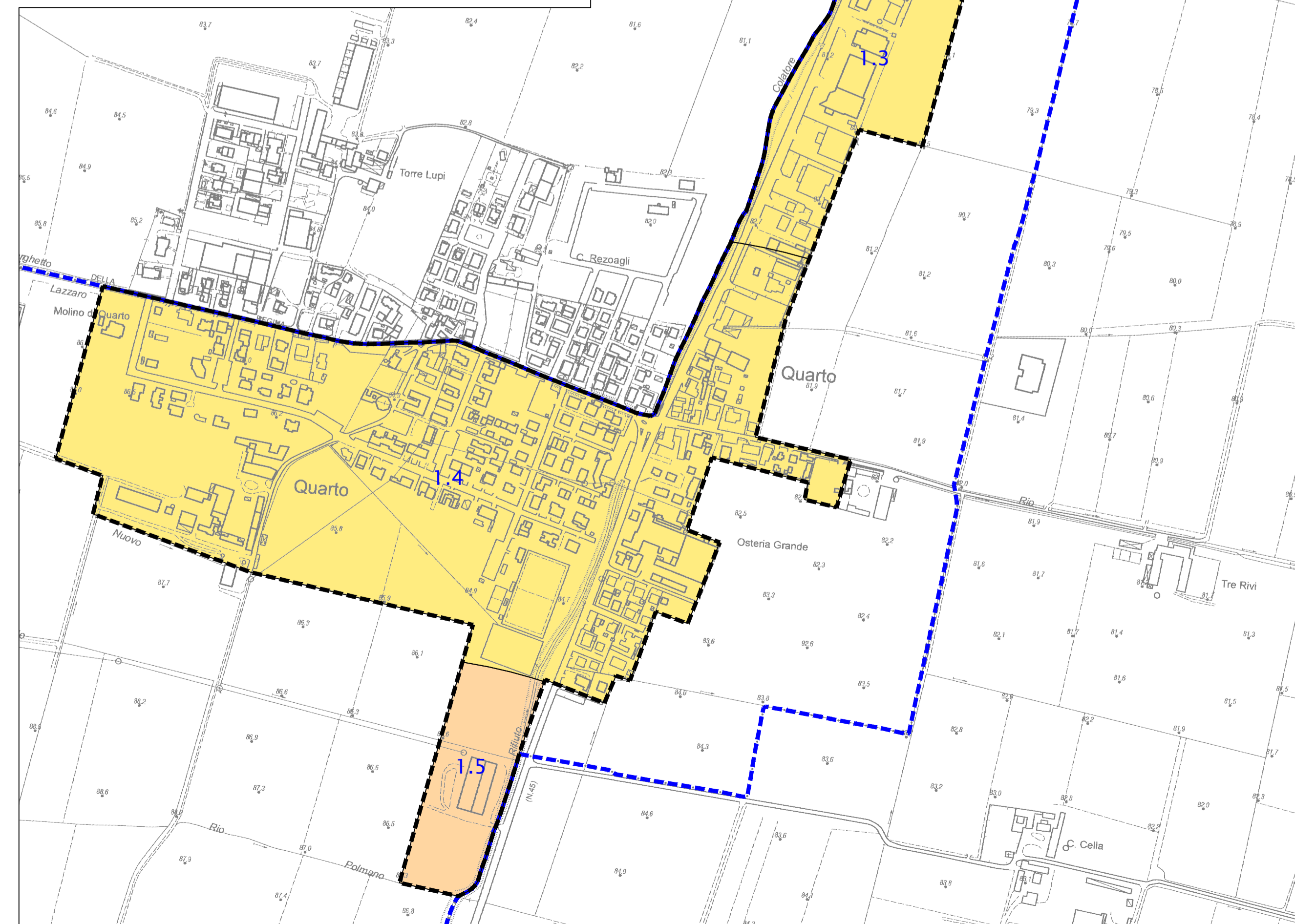
COMUNE DI GOSSOLENGO - SCALA 1:100.000



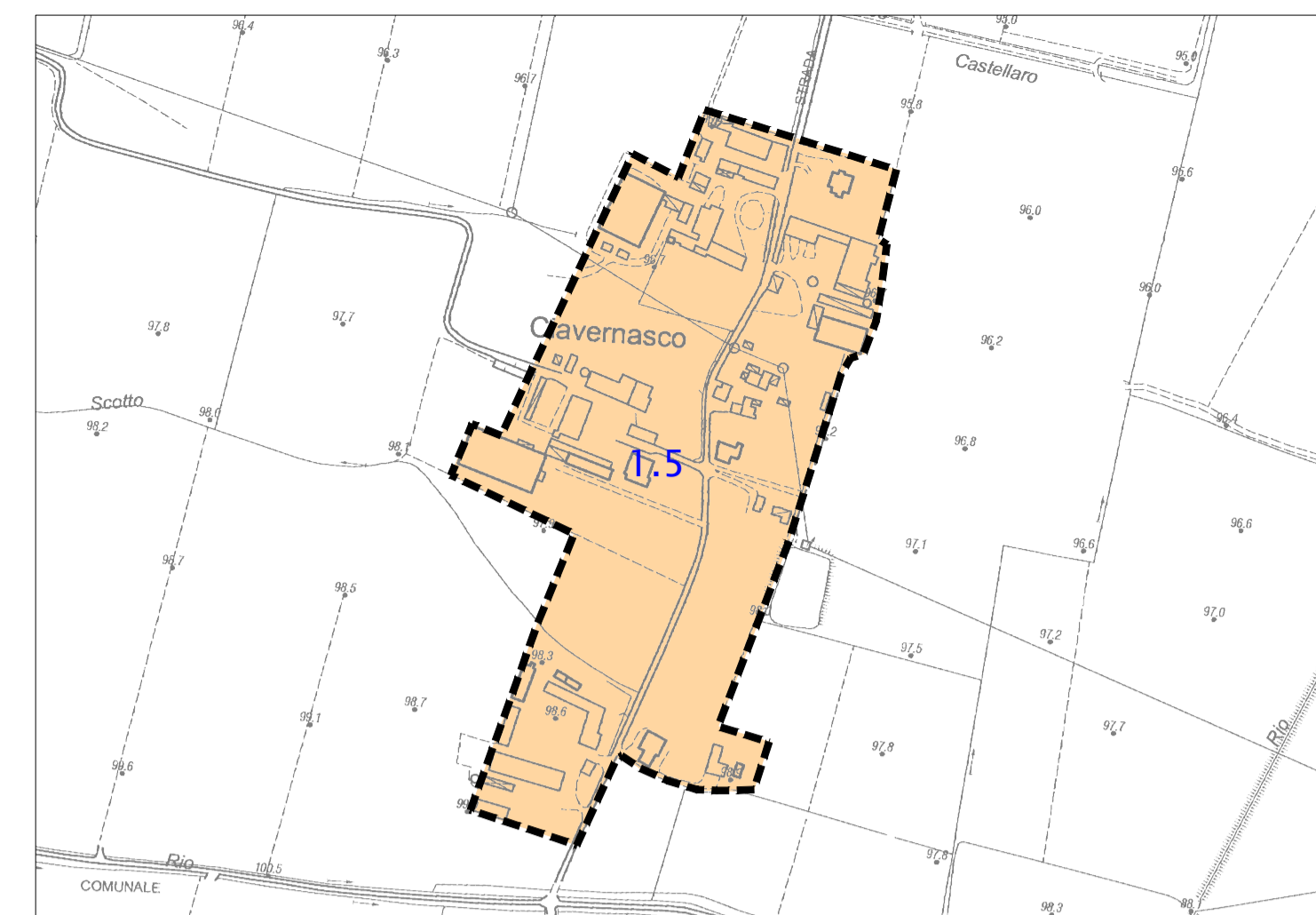
GOSSOLENGO CAPOLUOGO (a)



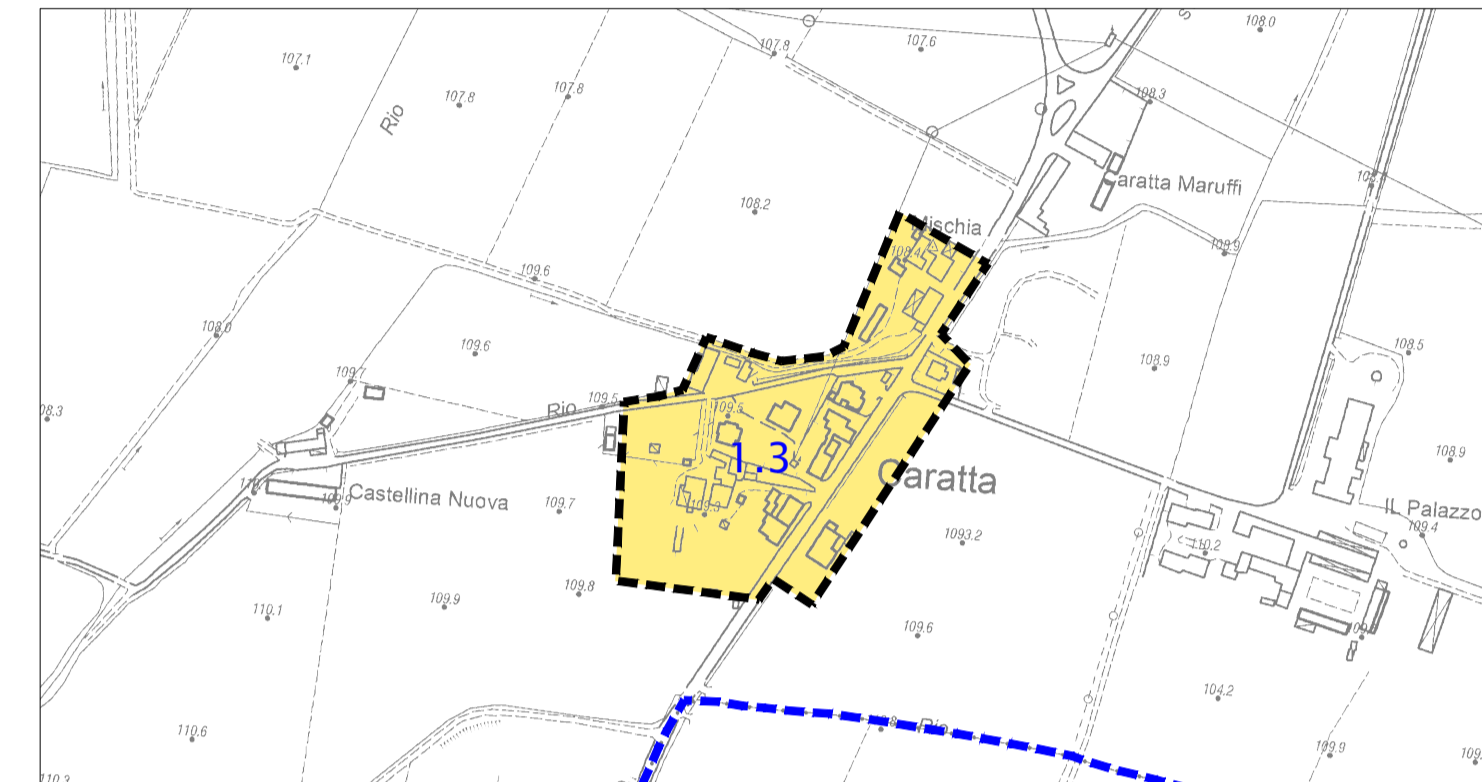
SETTIMA (b)



QUARTO (c)



CIAVENARSCO (d)



CARATTA (e)