

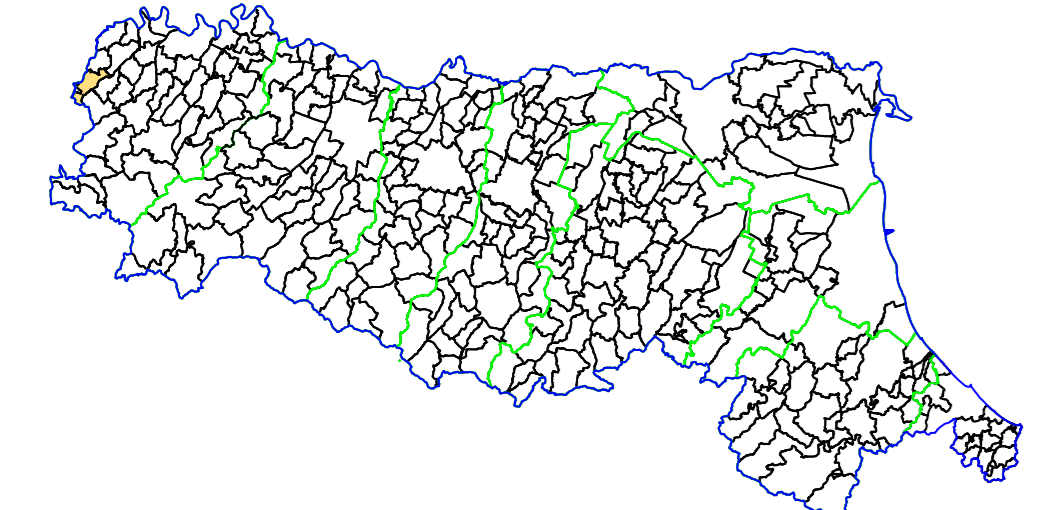
MICROZONAZIONE SISMICA

CARTA DELLE INDAGINI

scala 1 : 5.000

TAV. 01

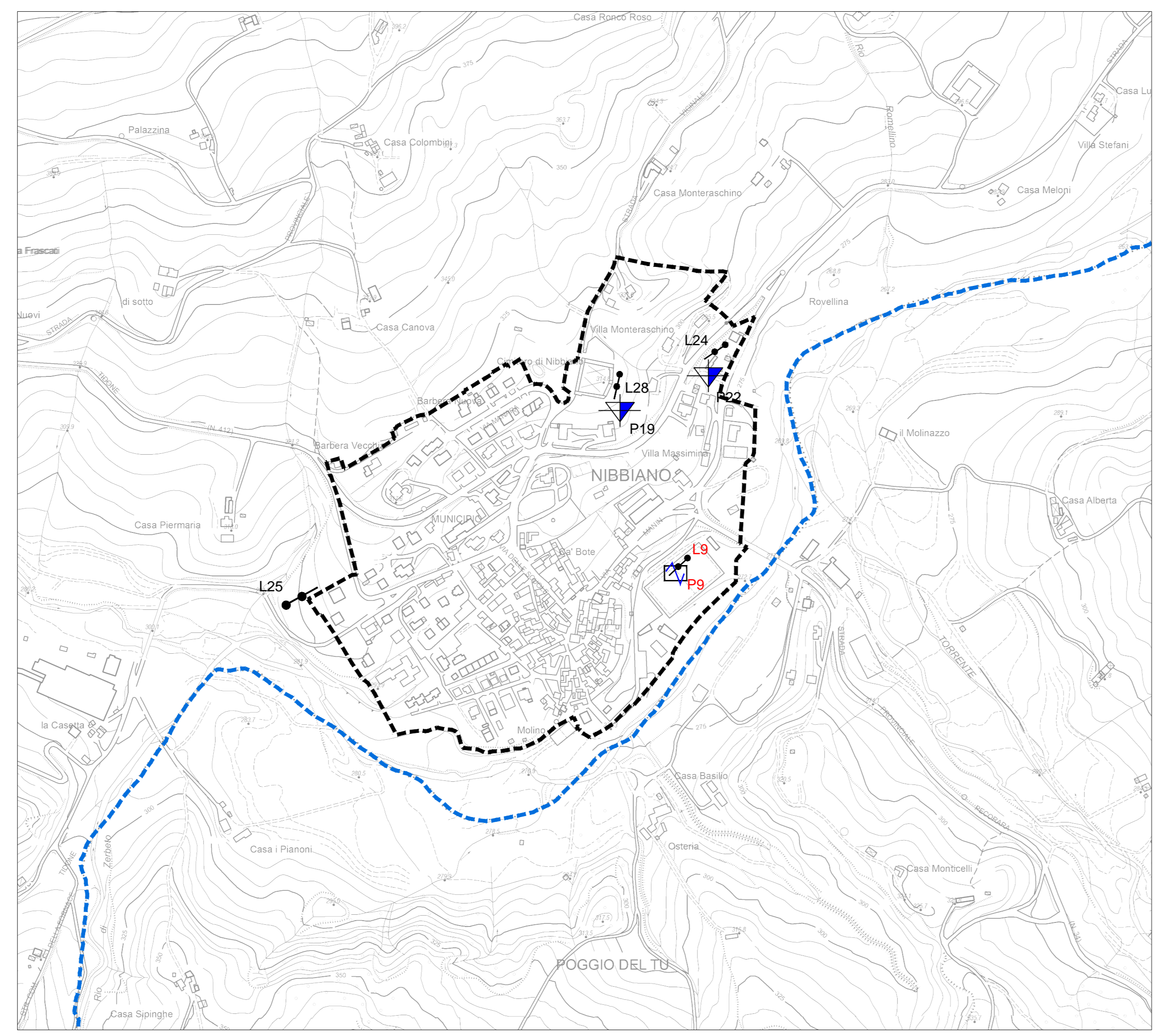
Regione Emilia-Romagna
Comune di Nibbiano



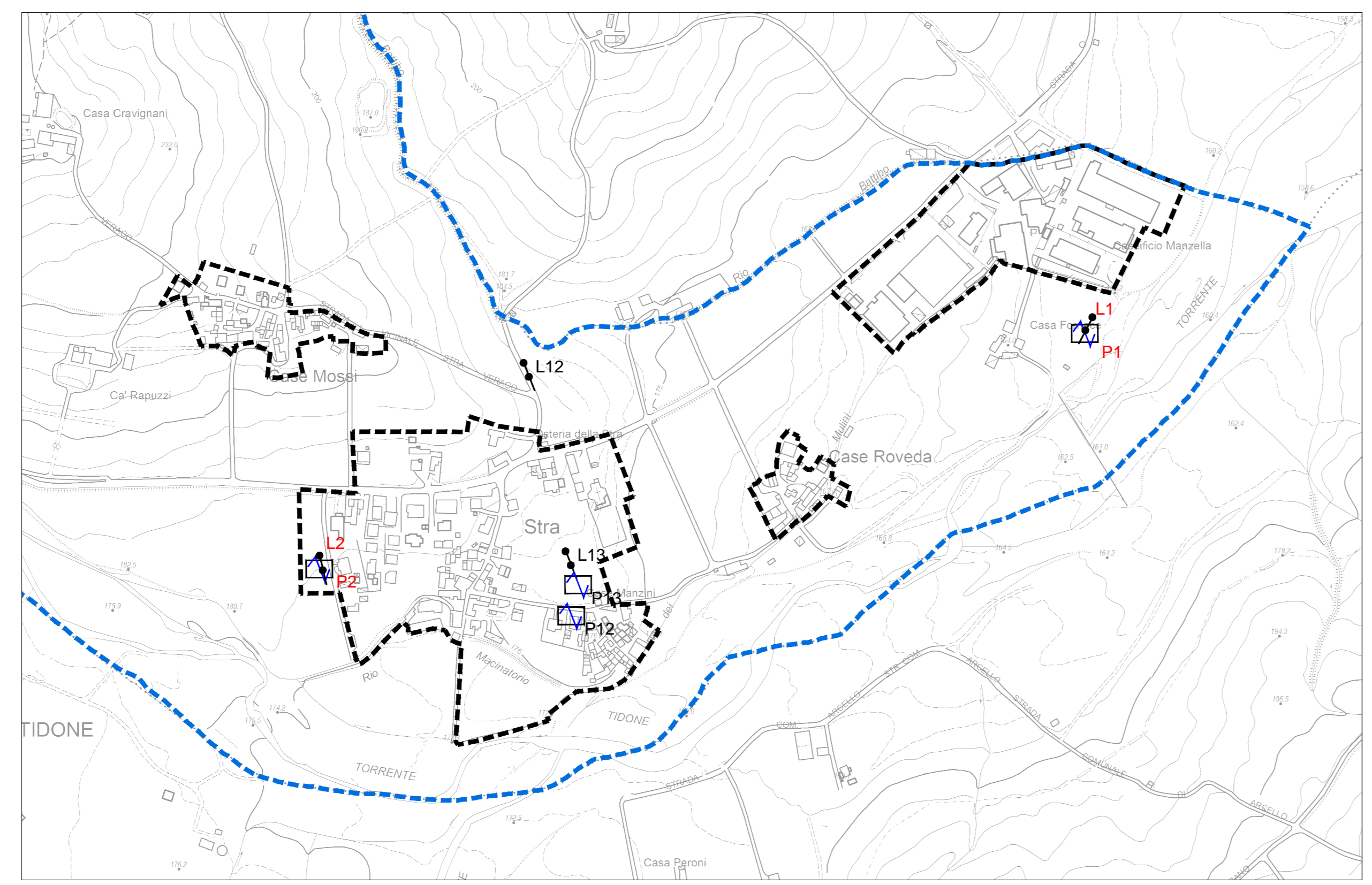
Regione	Soggetto realizzatore	Data
	 AMBITER S.p.A. società di ingegneria ambientale Via Nicolini, 3/A - 41126 Parma (PR) Tel. 0521/842000 - Fax 0521/842009 e-mail: info@ambiter.it PEC: ambiter@pec.ambiter.it	novembre 2017

LEGENDA

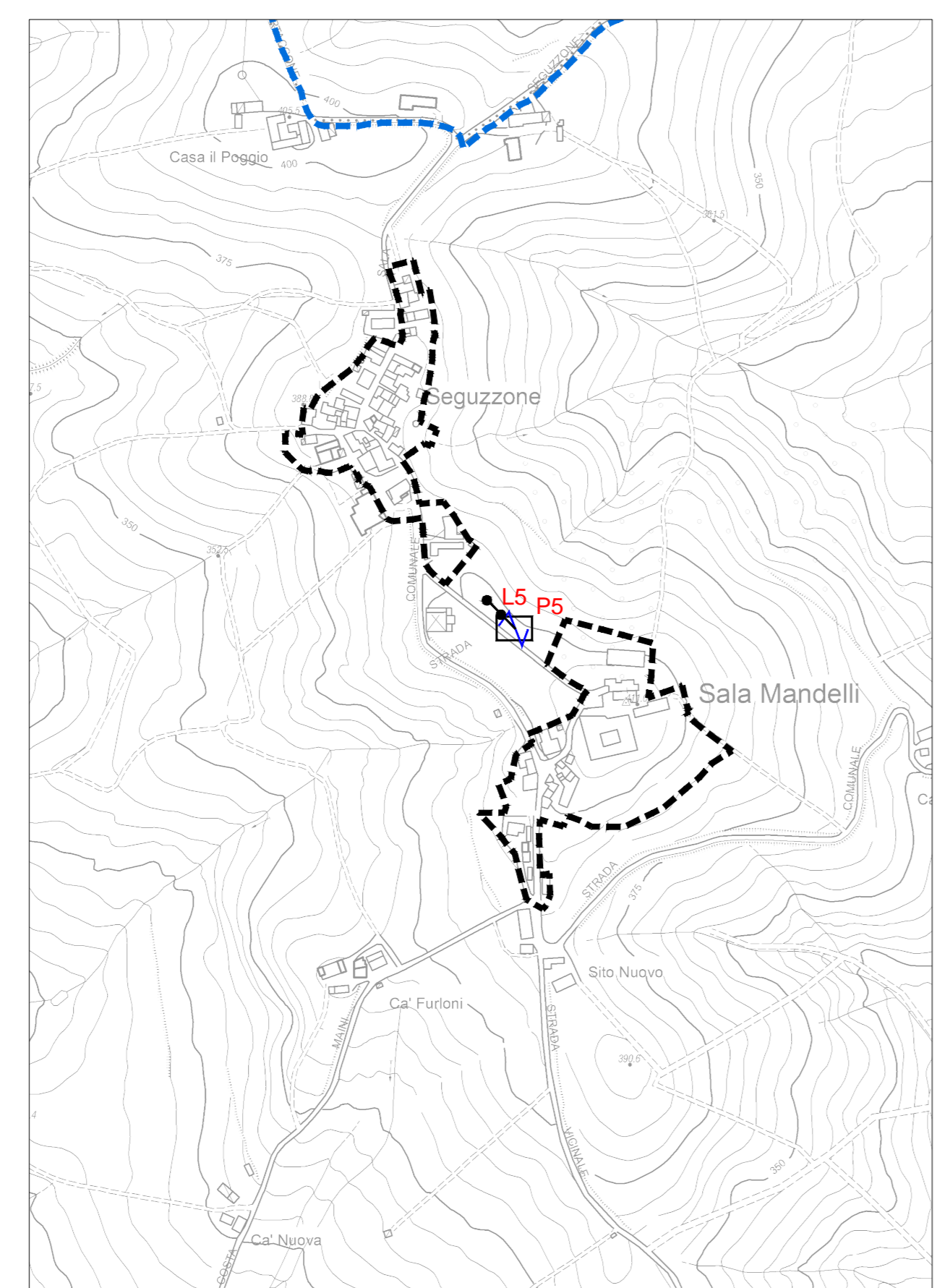
- Indagine geofisica MASW
(con la sigla in rosso sono indicate le prove realizzate ex-novo)
- Analisi dei microtremori HVSAR
(con la sigla in rosso sono indicate le prove realizzate ex-novo per il presente Studio di MS)
- Prova penetrometrica dinamica
- Ambito interessato dallo studio di microzonazione sismica
- Confine comunale



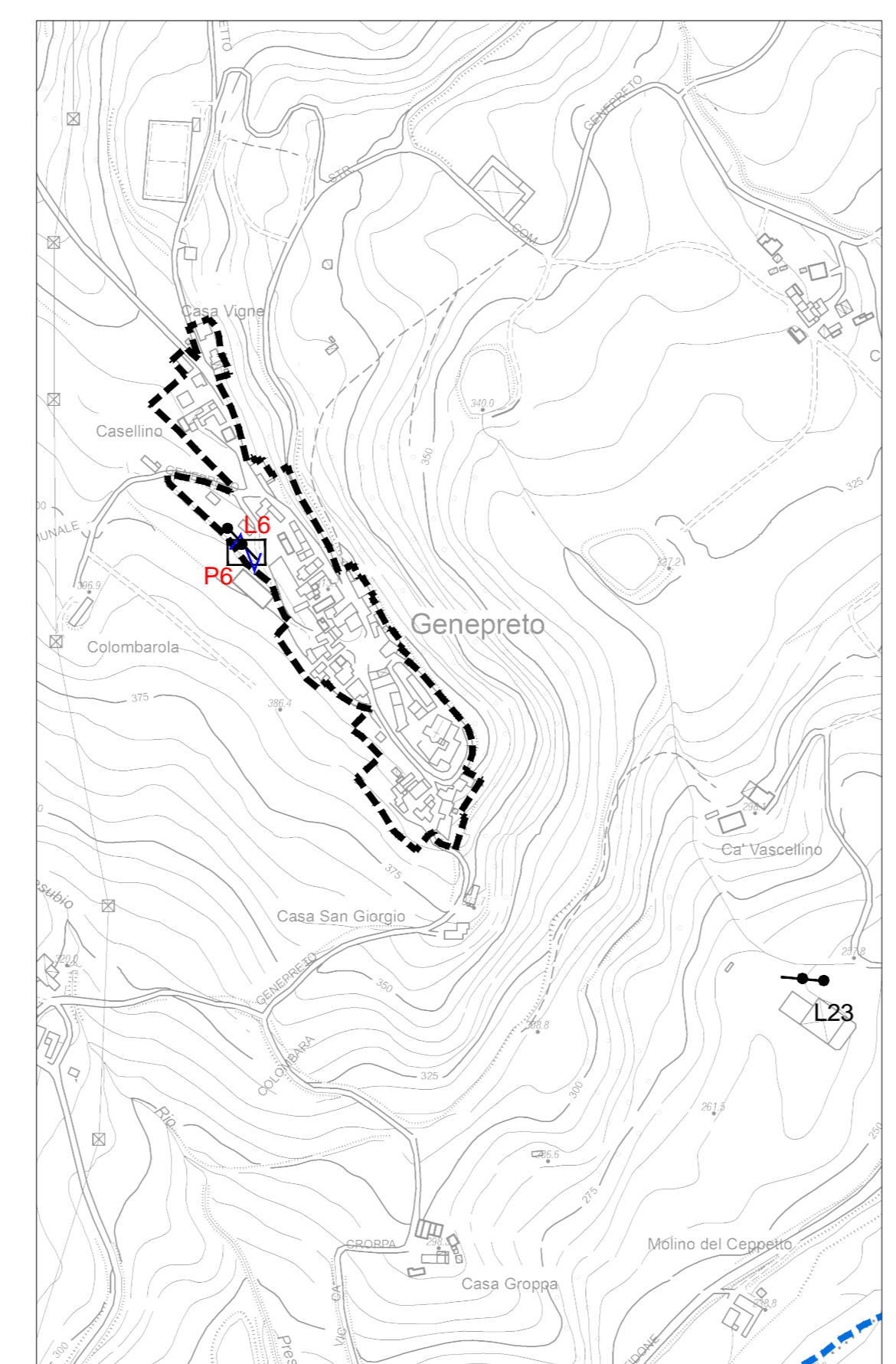
NIBBIANO (A)



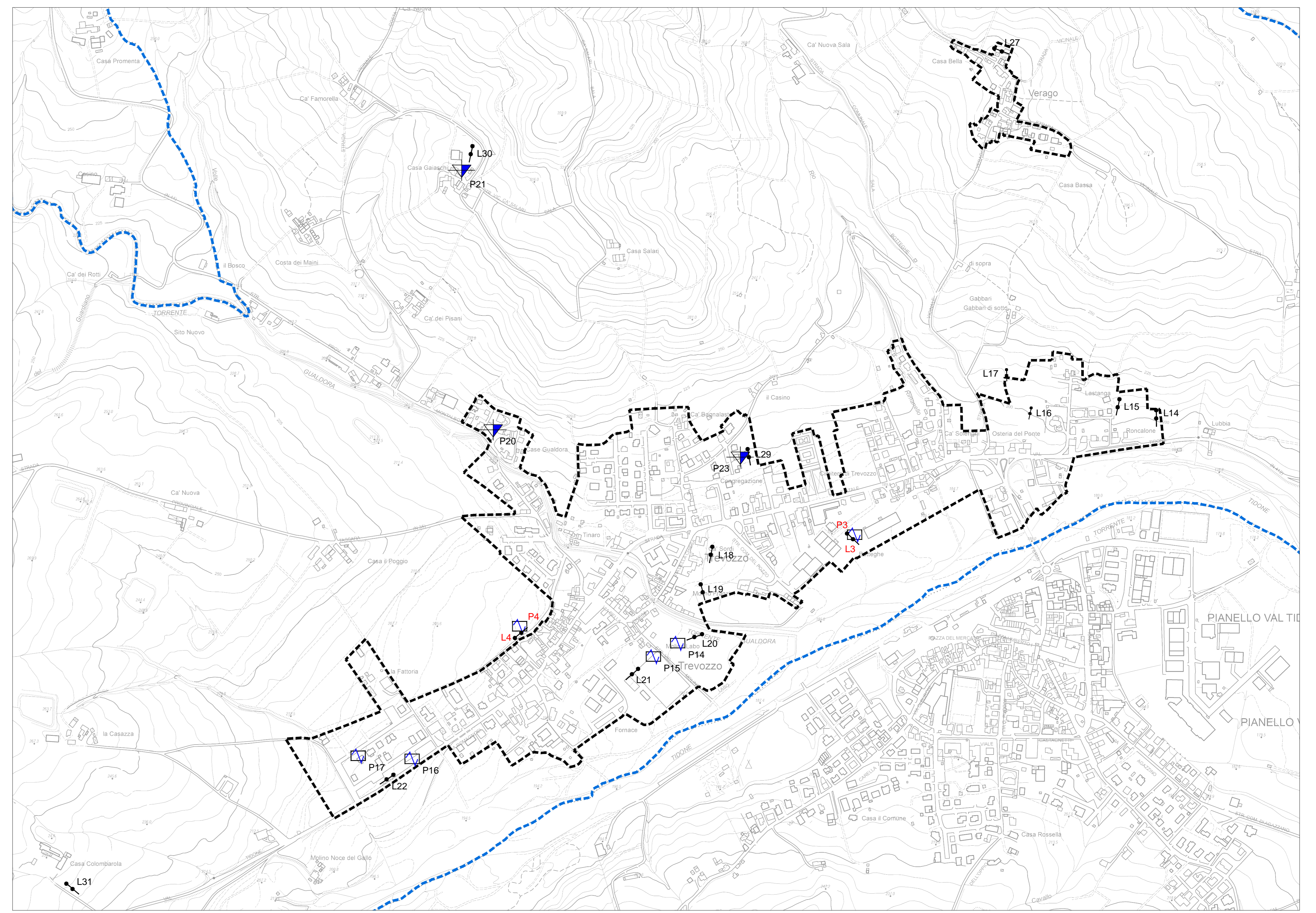
STRA (C)



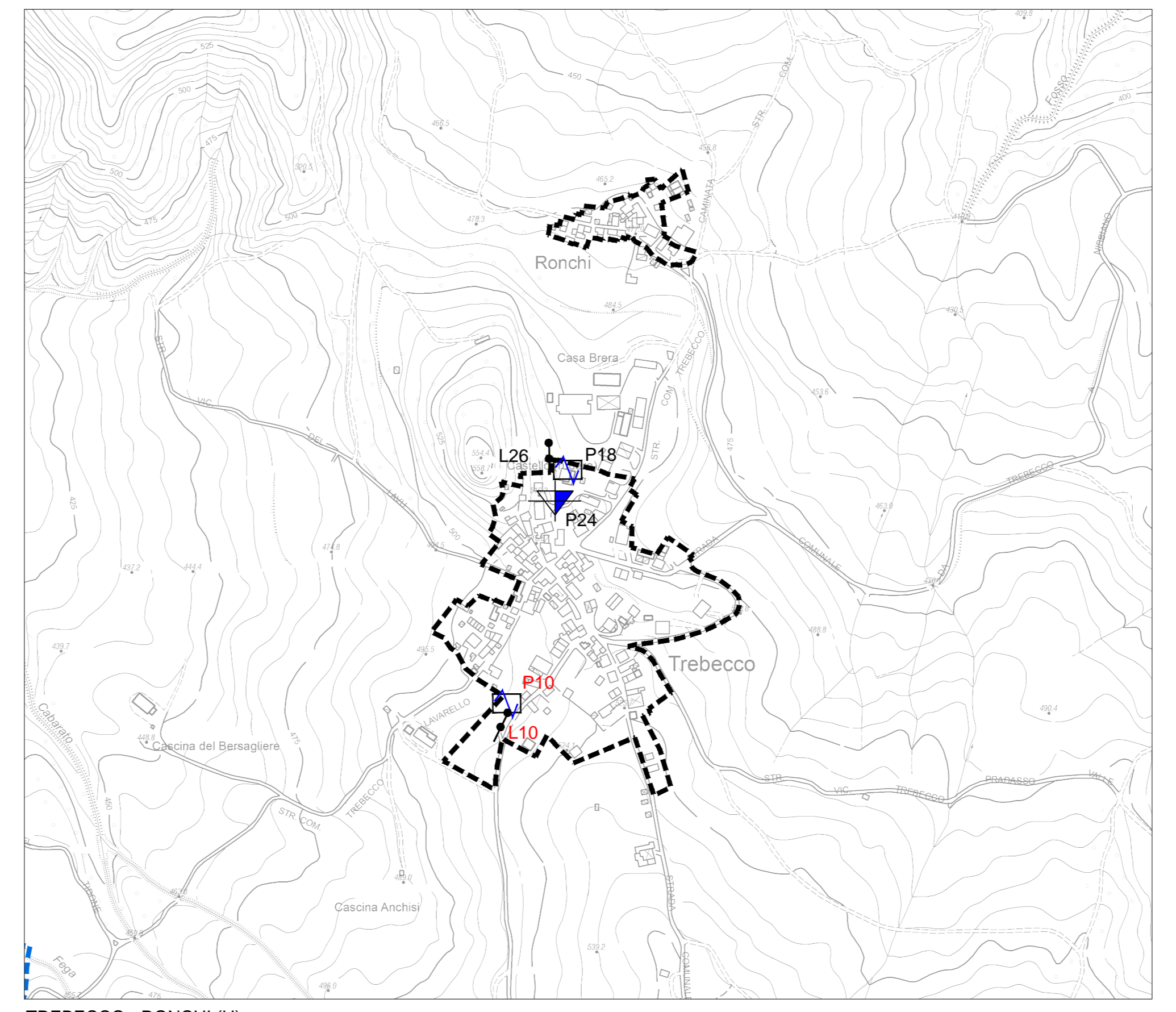
SEGUZZONE - SALA MANDELLI (D)



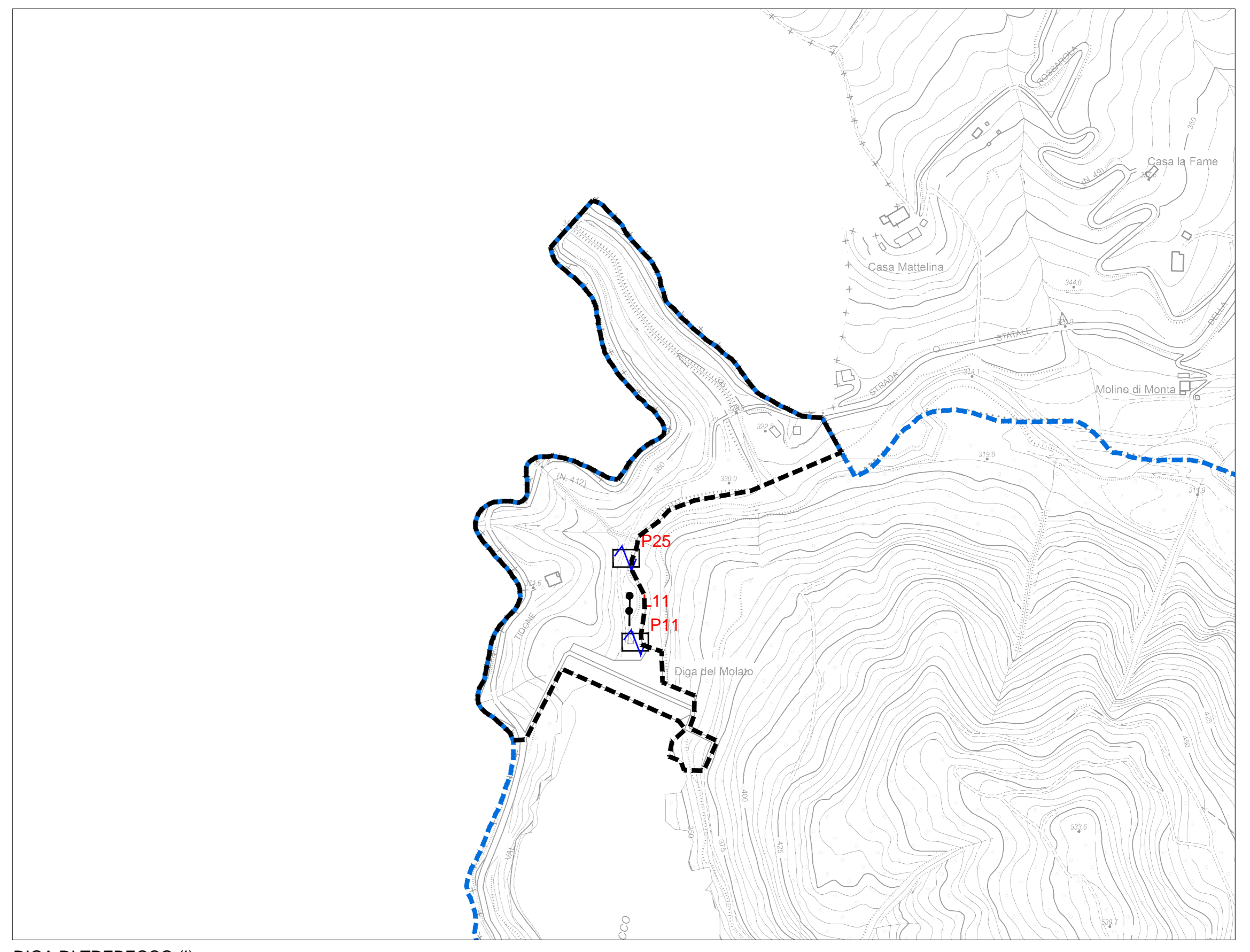
GENEPRETO (E)



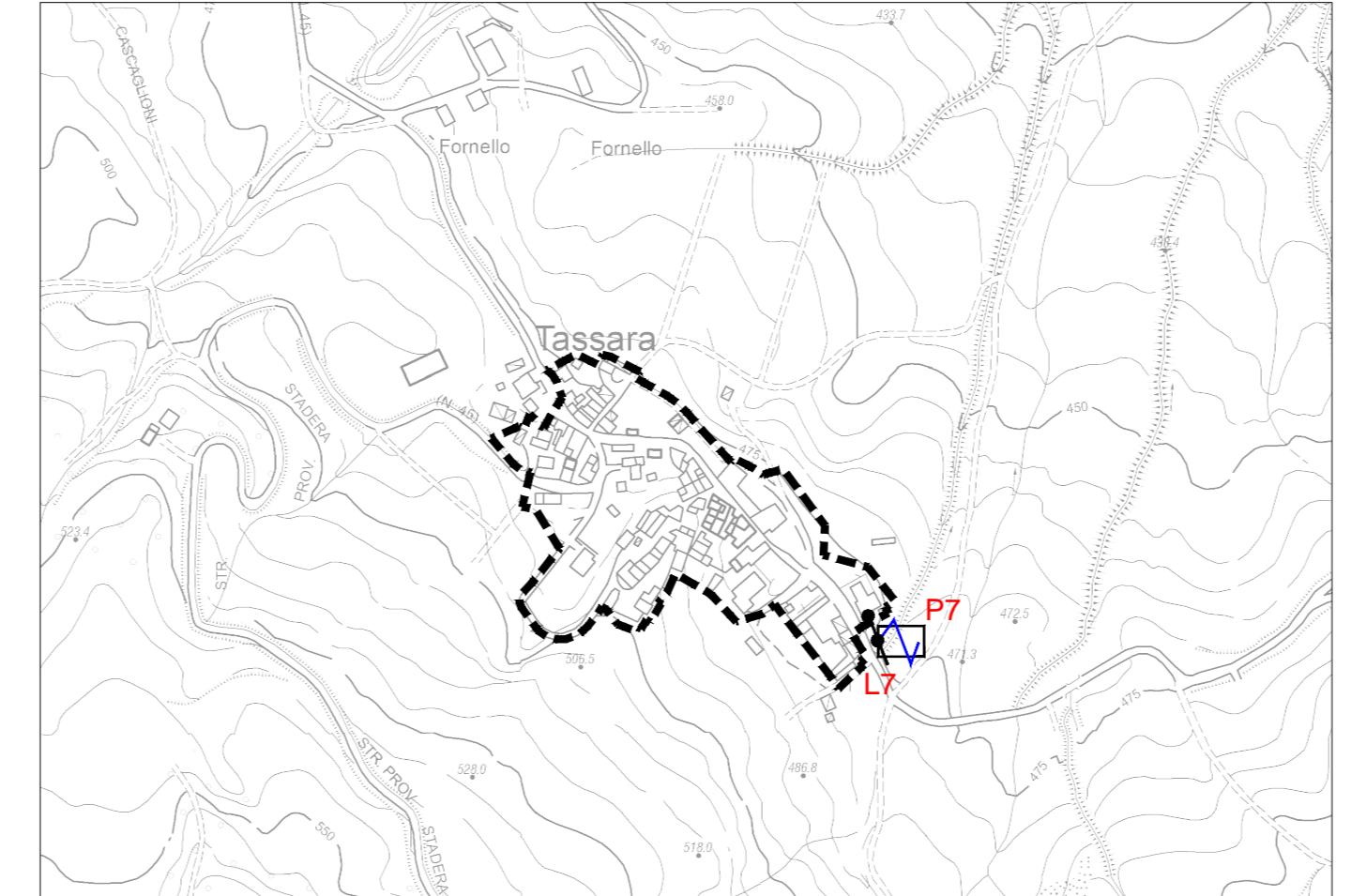
TREVOZZO (B)



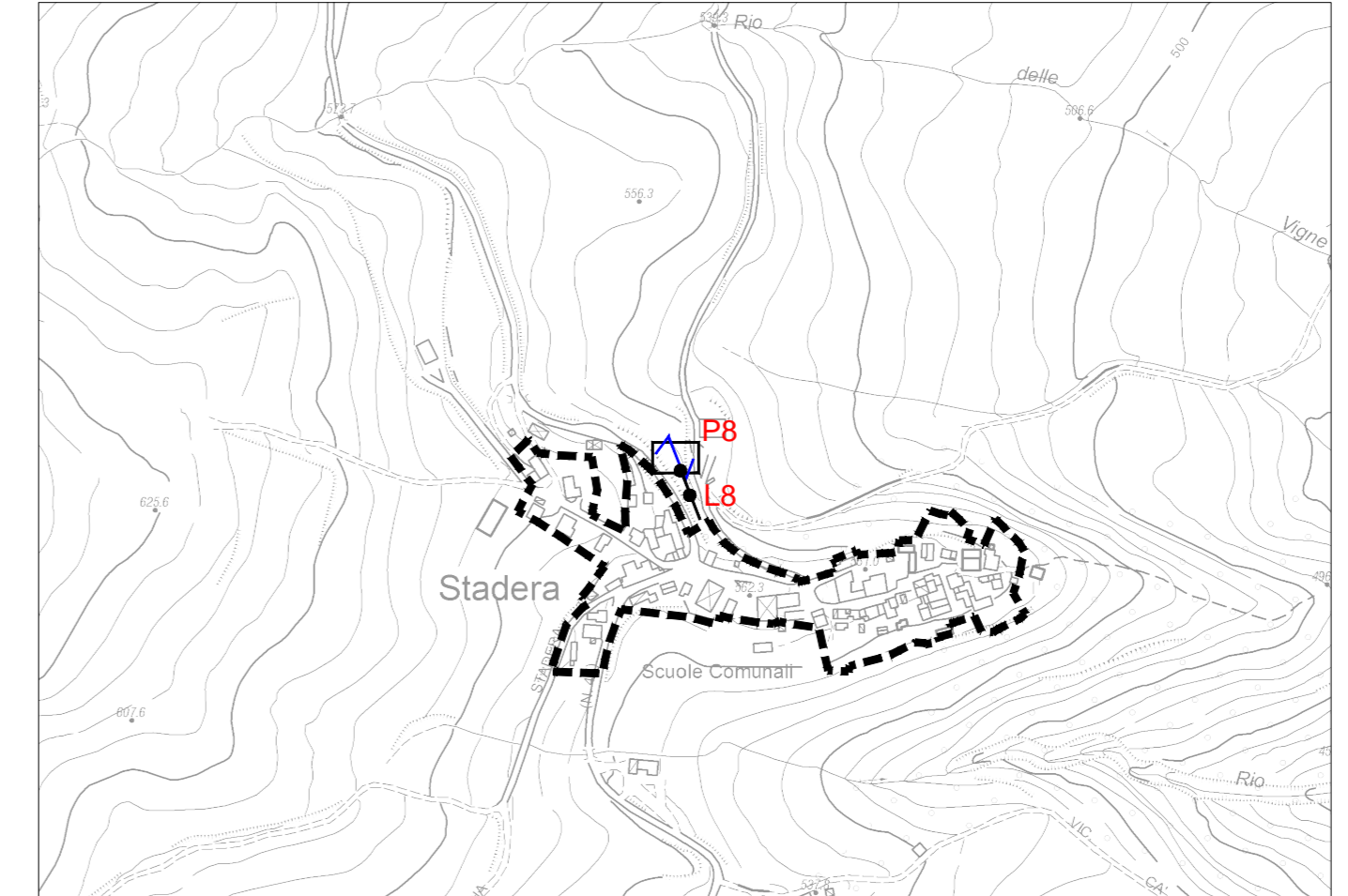
TREBECCO - RONCHI (H)



DIGA DI TREBECCO (I)



TASSARA (F)



STADERA (G)

