

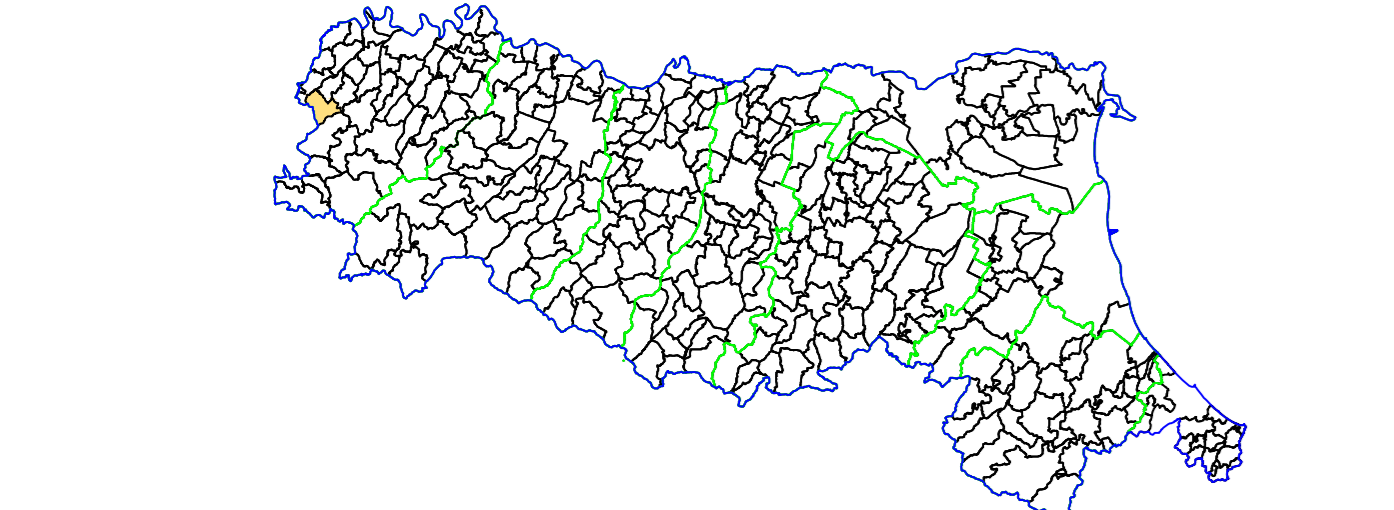
MICROZONAZIONE SISMICA

CARTA DI MICROZONAZIONE SISMICA

F.A. SI2: $0.5s \leq T_0 \leq 1.0s$

scala 1 : 5.000 TAV. 07c

Regione Emilia-Romagna
Comune di Pecorara



Regione	Soggetto realizzatore	Data
	 AMBITER S.p.A. società di ingegneria ambientale Via Niccolò, 3/A - 41126 Parma (PR) Tel. 0521/842000 - Fax 0521/842009 e-mail: info@ambiter.it P.I.C. ambitere@ambiter.it	novembre 2017

LEGENDA

--- Ambito interessato dallo studio di microzonazione sismica

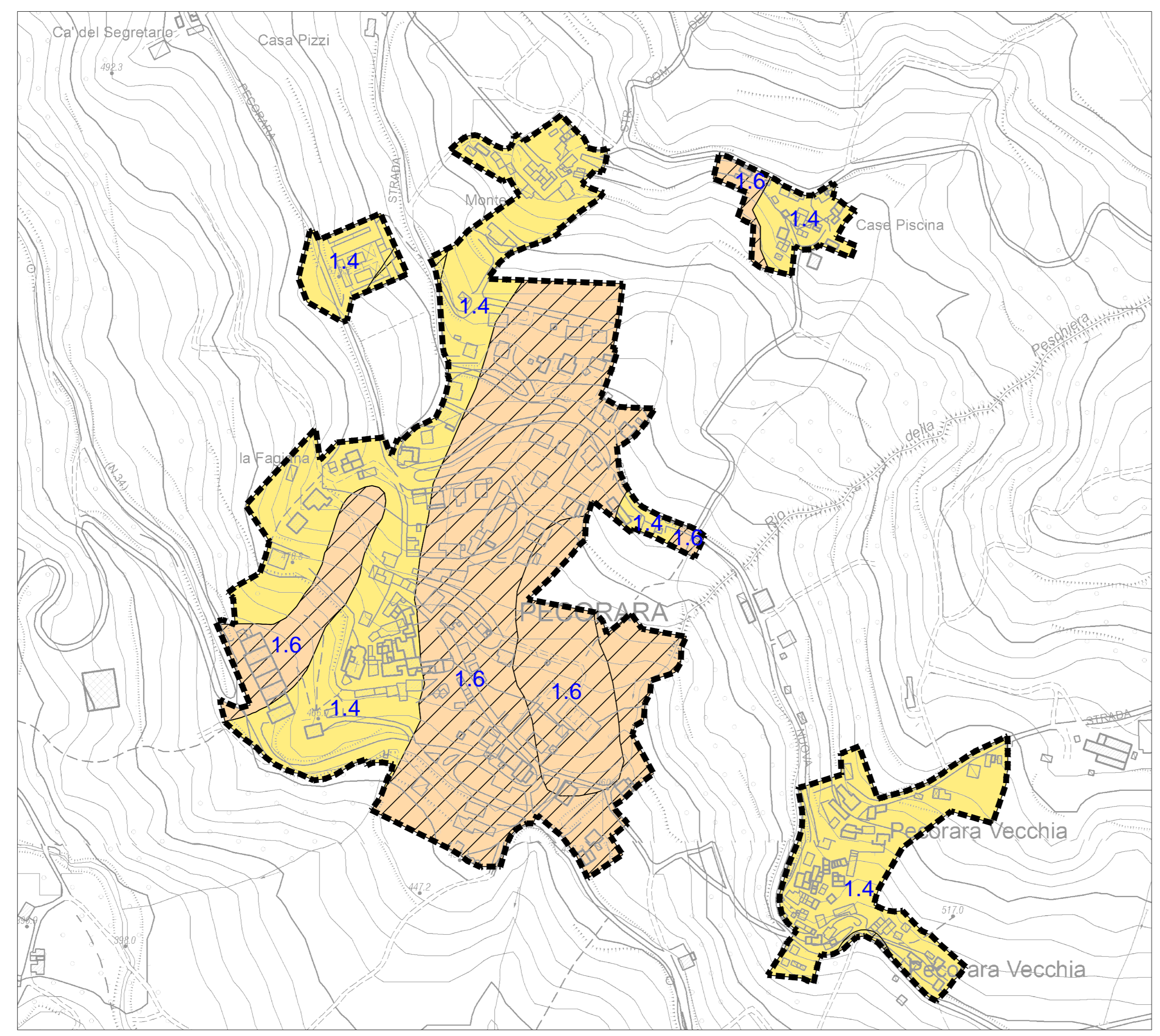
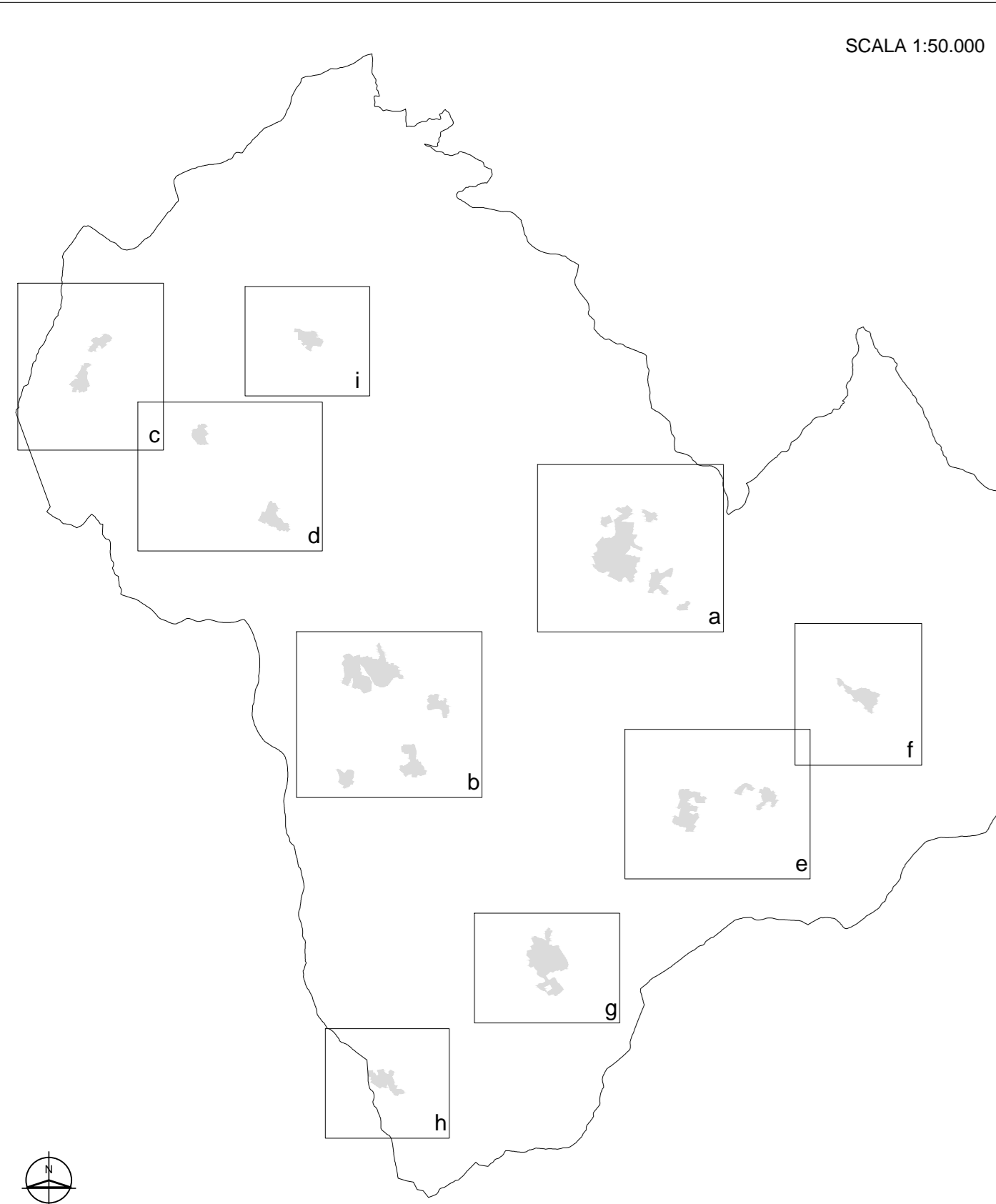
--- Confine comunale

ZONE STABILI SUSCETTIBILI DI AMPLIFICAZIONI LOCALI

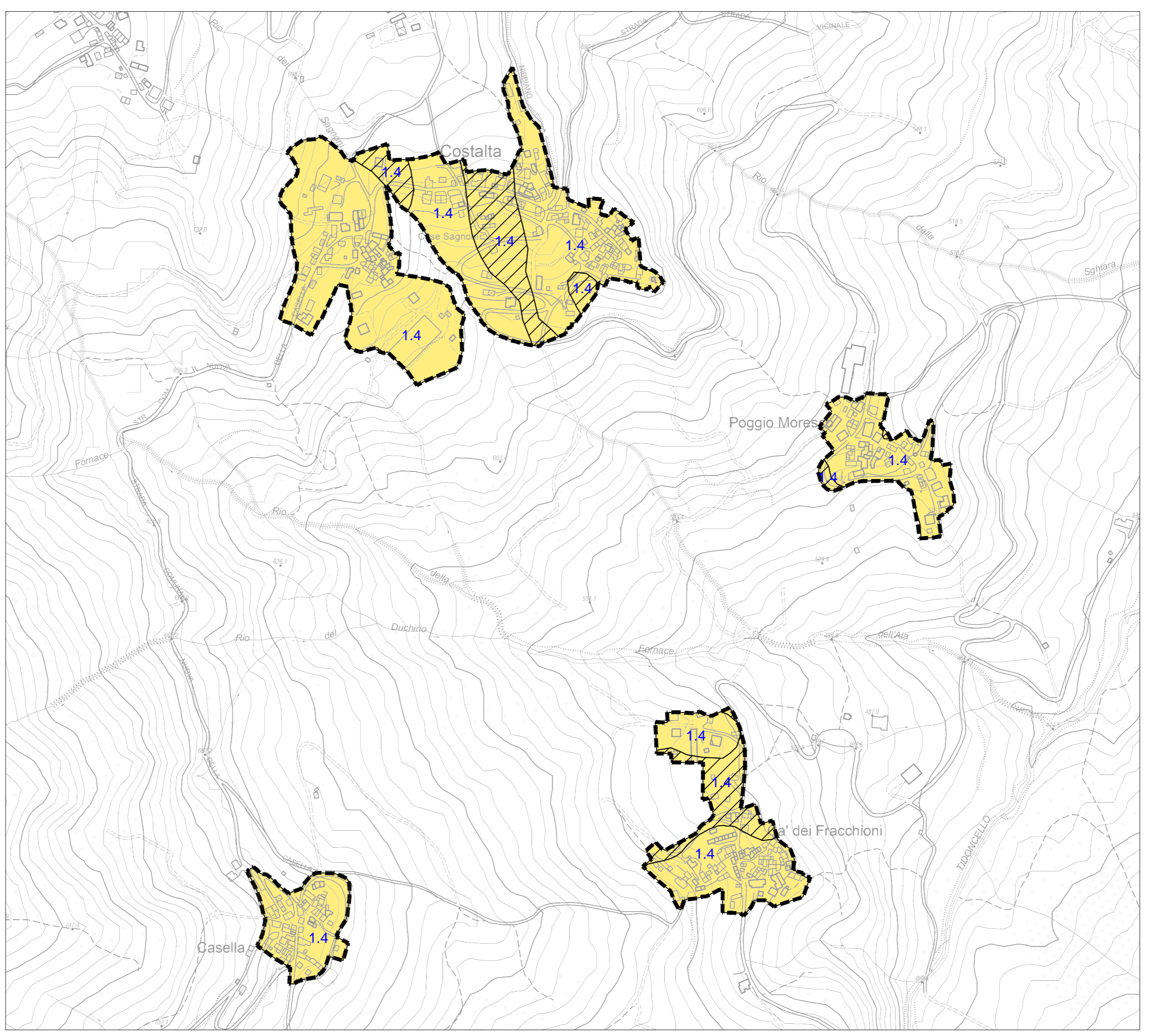
- F.A. PGA = 1.3 - 1.4
- F.A. PGA = 1.5 - 1.6

ZONE DI ATTENZIONE PER INSTABILITA' DI VERSANTE

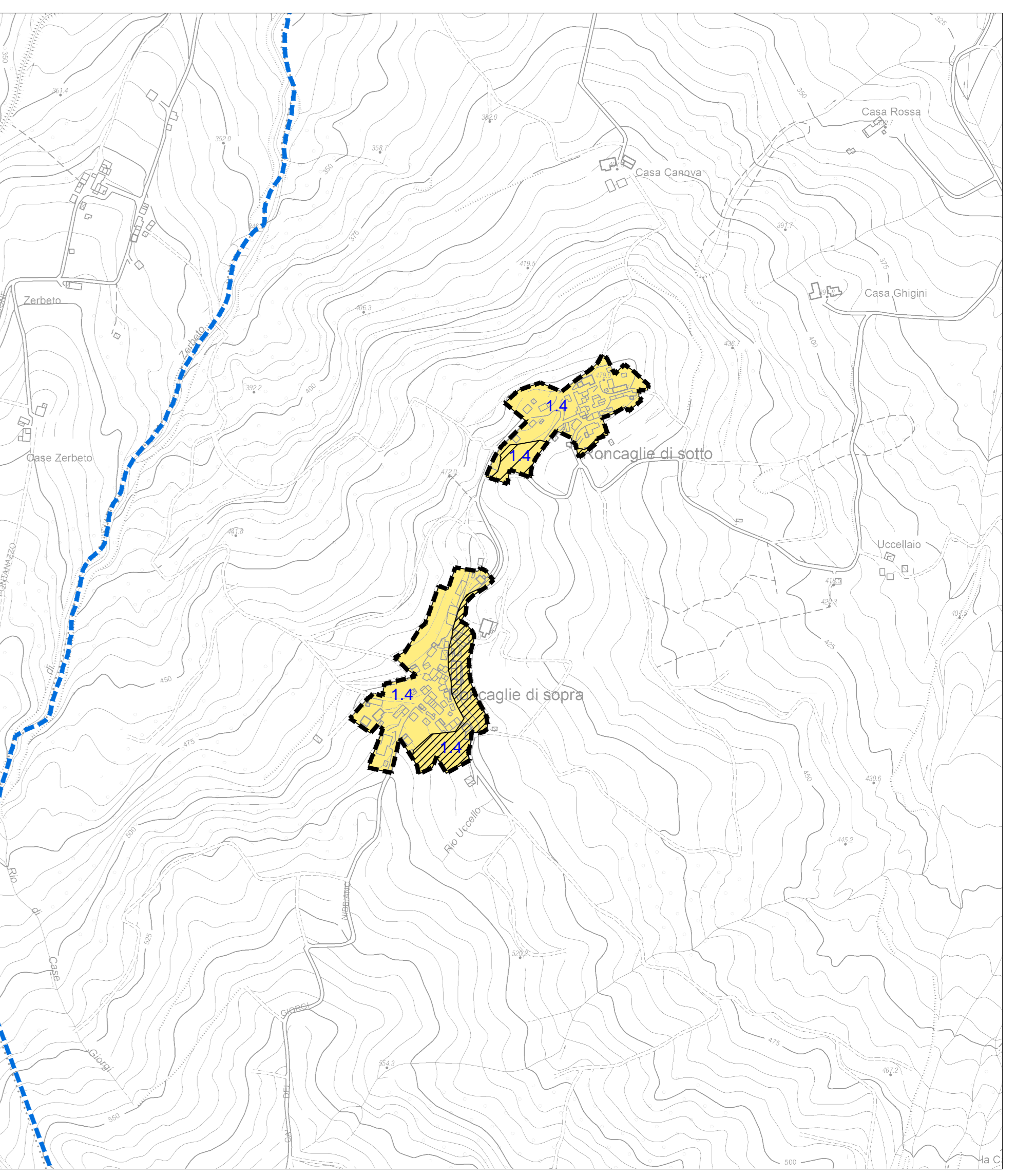
- F.A. PGA = 1.3 - 1.4
- F.A. PGA = 1.5 - 1.6



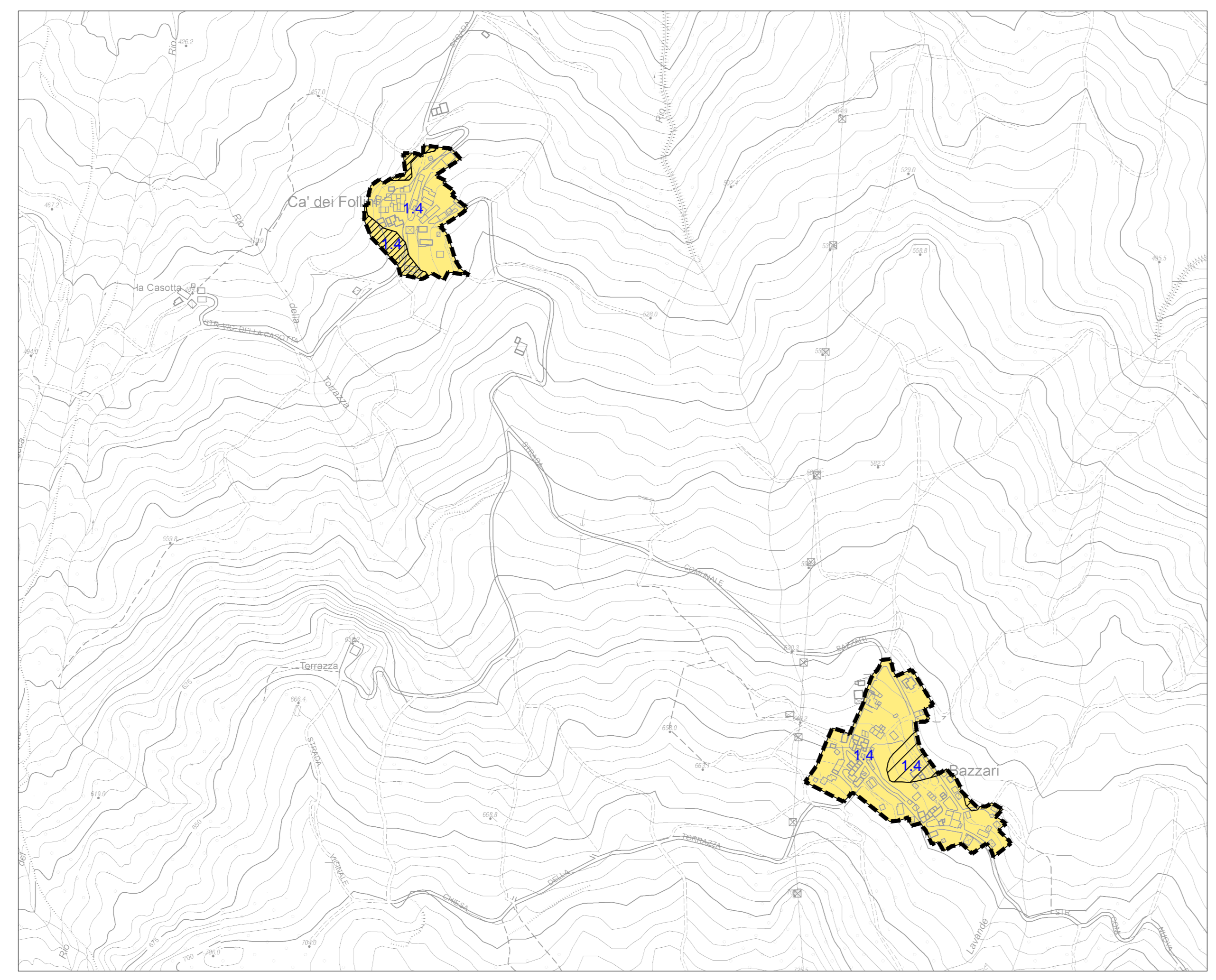
PECORARA (A)



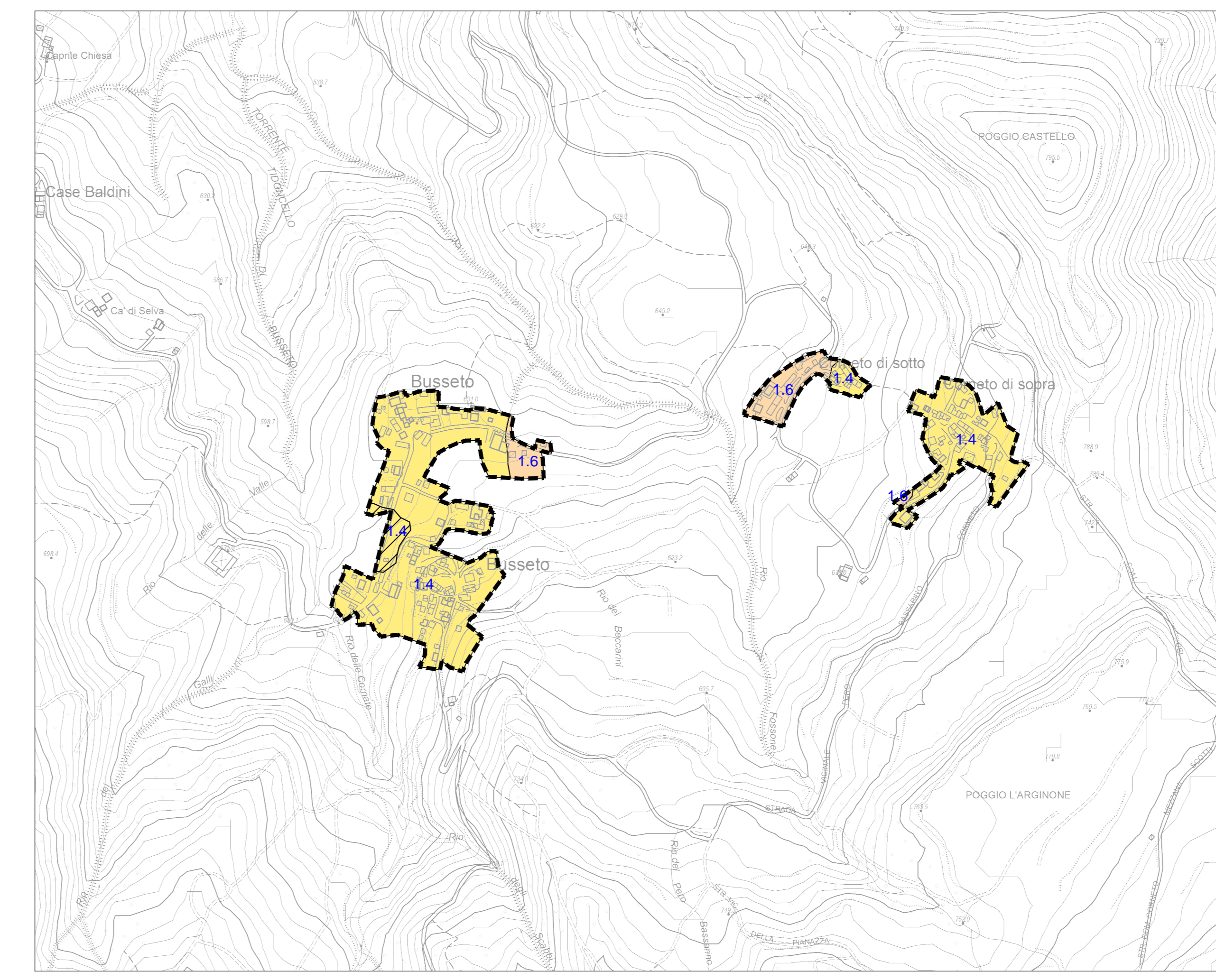
COSTALTA - POGGIO MORESCO - CA' DEI FRACCHIONI - CASELLA (B)



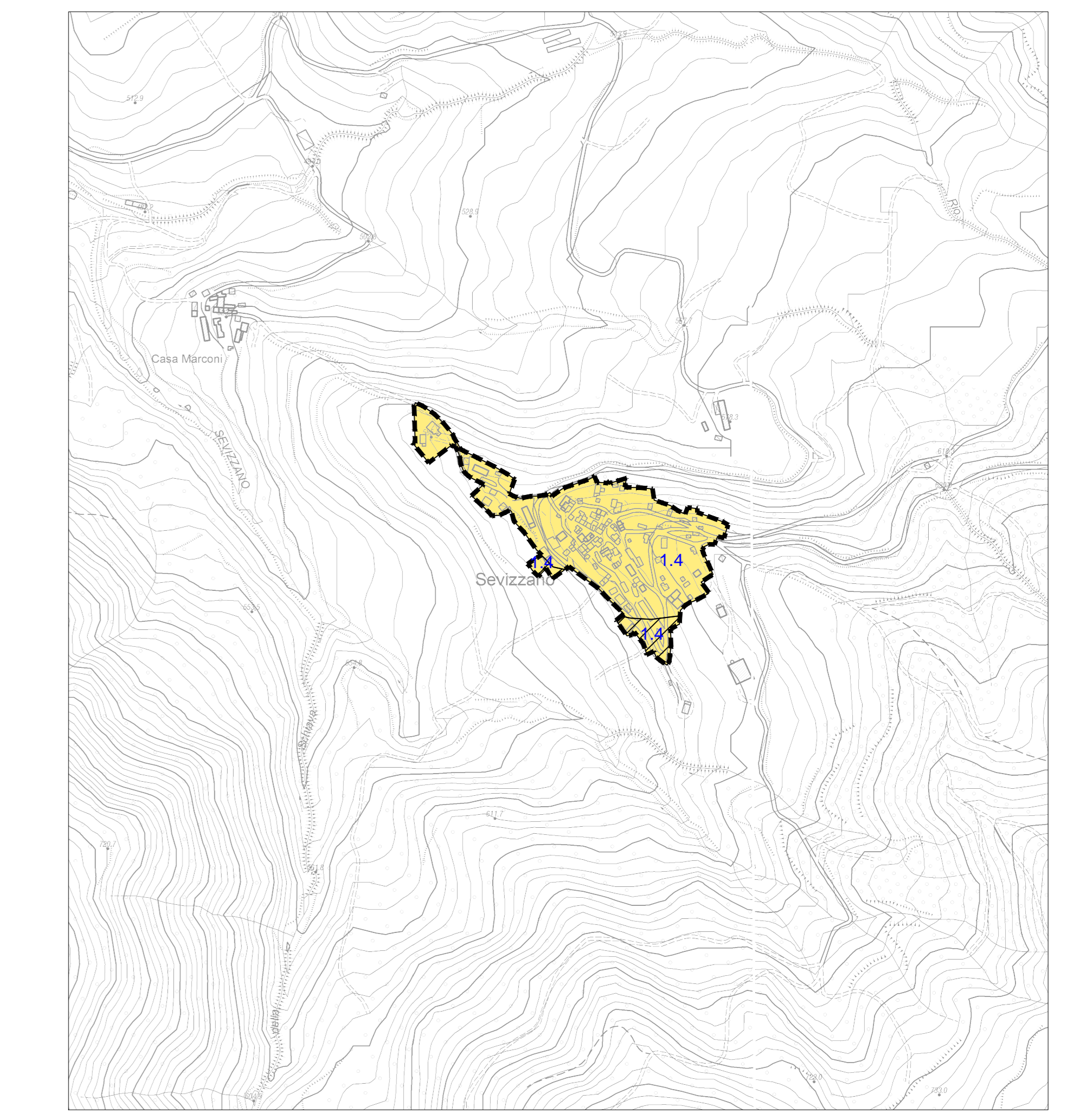
RONCAGLIE DI SOTTO - RONCAGLIE DI SOPRA (C)



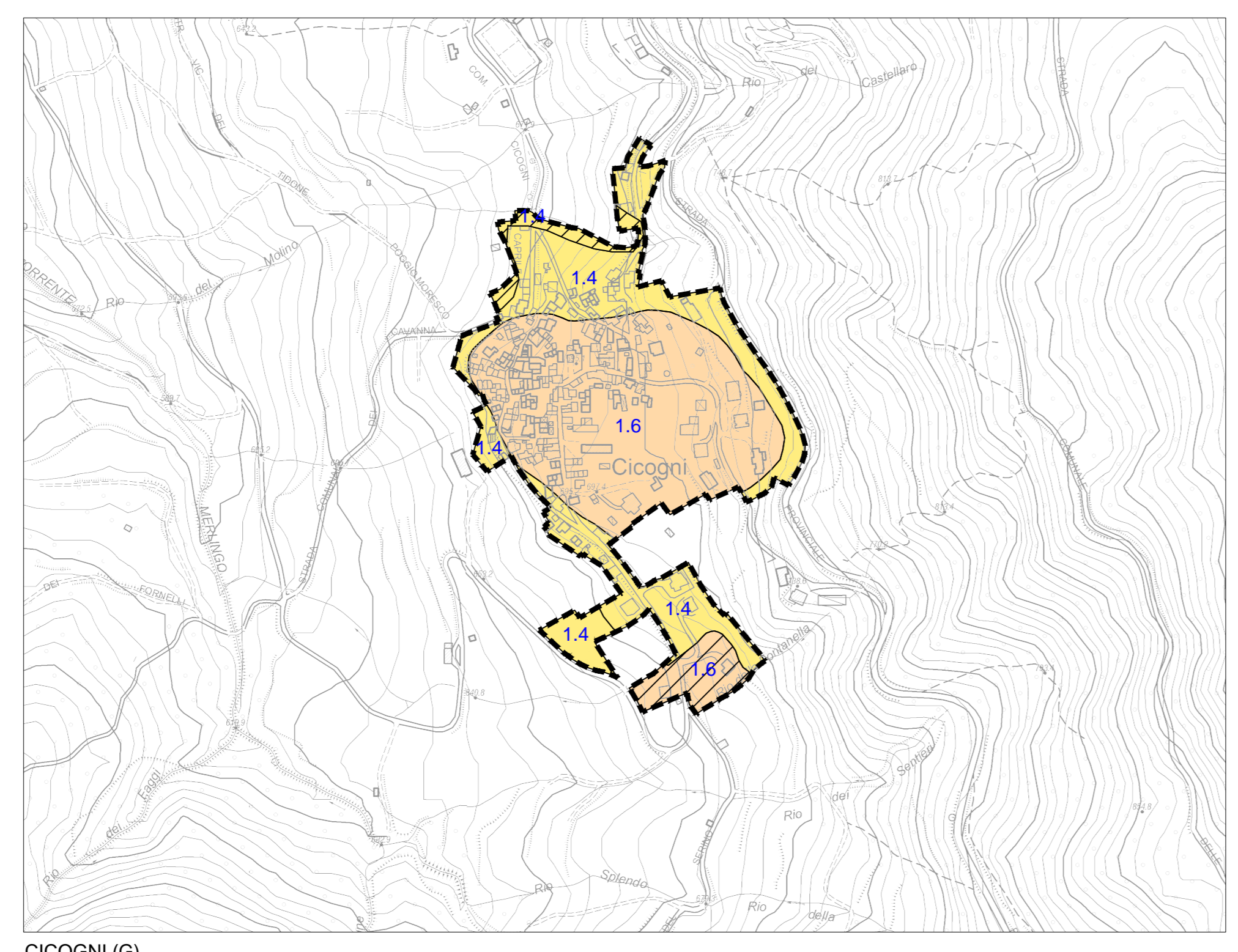
CA' DEI FOLLINI - BAZZARI (A)



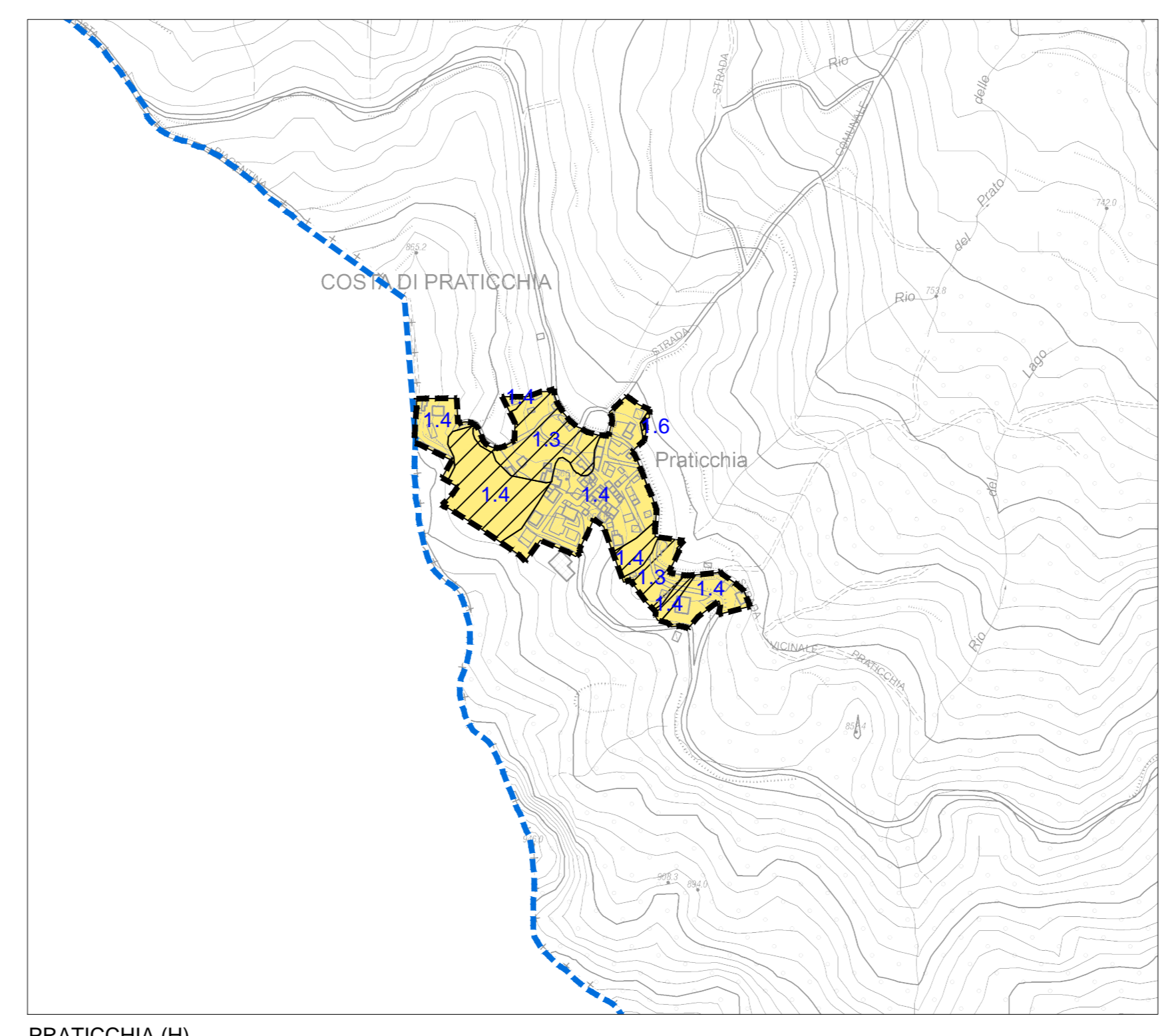
BUSSETO - CORNETO DI SOPRA - CORNETO DI SOTTO (E)



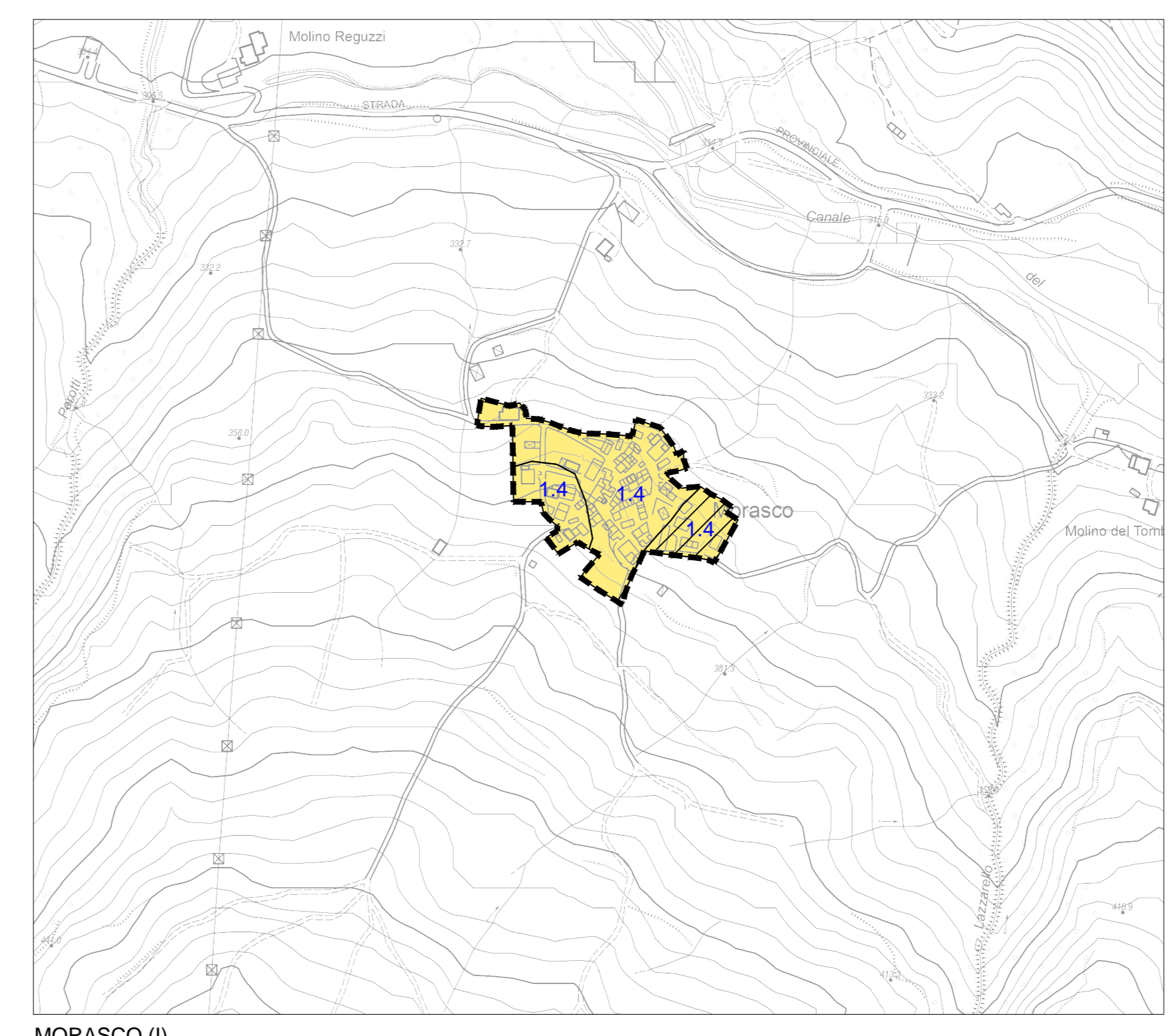
SEVIZZANO (F)



CICOJNI (G)



PRATICCHIA (H)



MORASCO (I)