

ANALISI DELLA CONDIZIONE LIMITE PER L'EMERGENZA (CLE)

scala 1:5000

Regione Emilia-Romagna

Comune di Ponte dell'Olio



Soggetto realizzatore
 Geol. Emami Emanuele
 Via dei Ciliegi, 4 - Villanova sull'Arda
 tel. 0523/853200 cell. 335/1281389







 Geol. Carpena Andrea
 Geol. Chiselli Irene
GEOLOGIA E GEOFISICA
 Sede legale: Via Fioruzzi, 15 - 29121 PC
 E-mail: andrea.carpena@geofisica.it
 Sito web: www.geofisica.it

Data
 Agosto 2018






Legenda

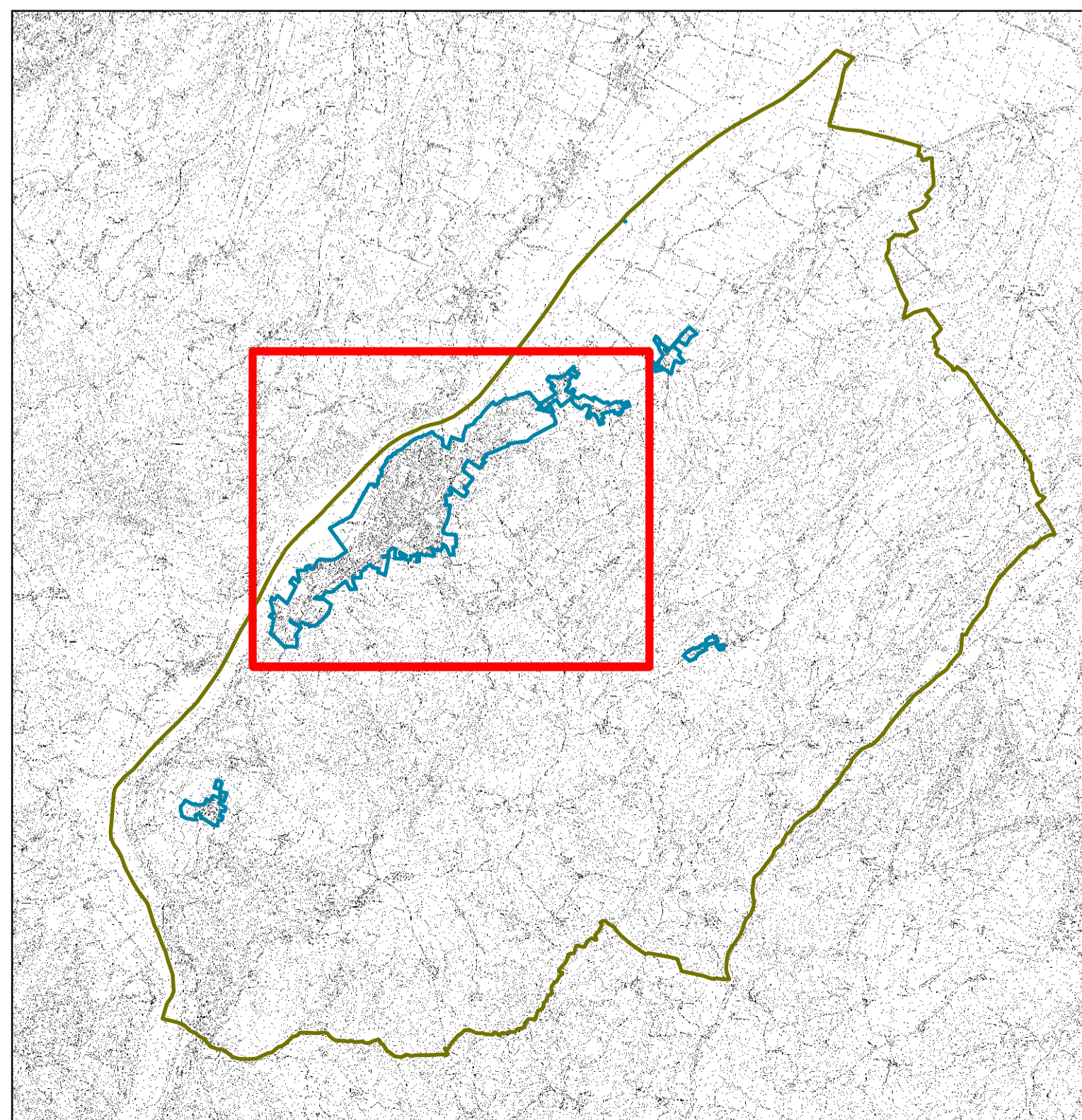
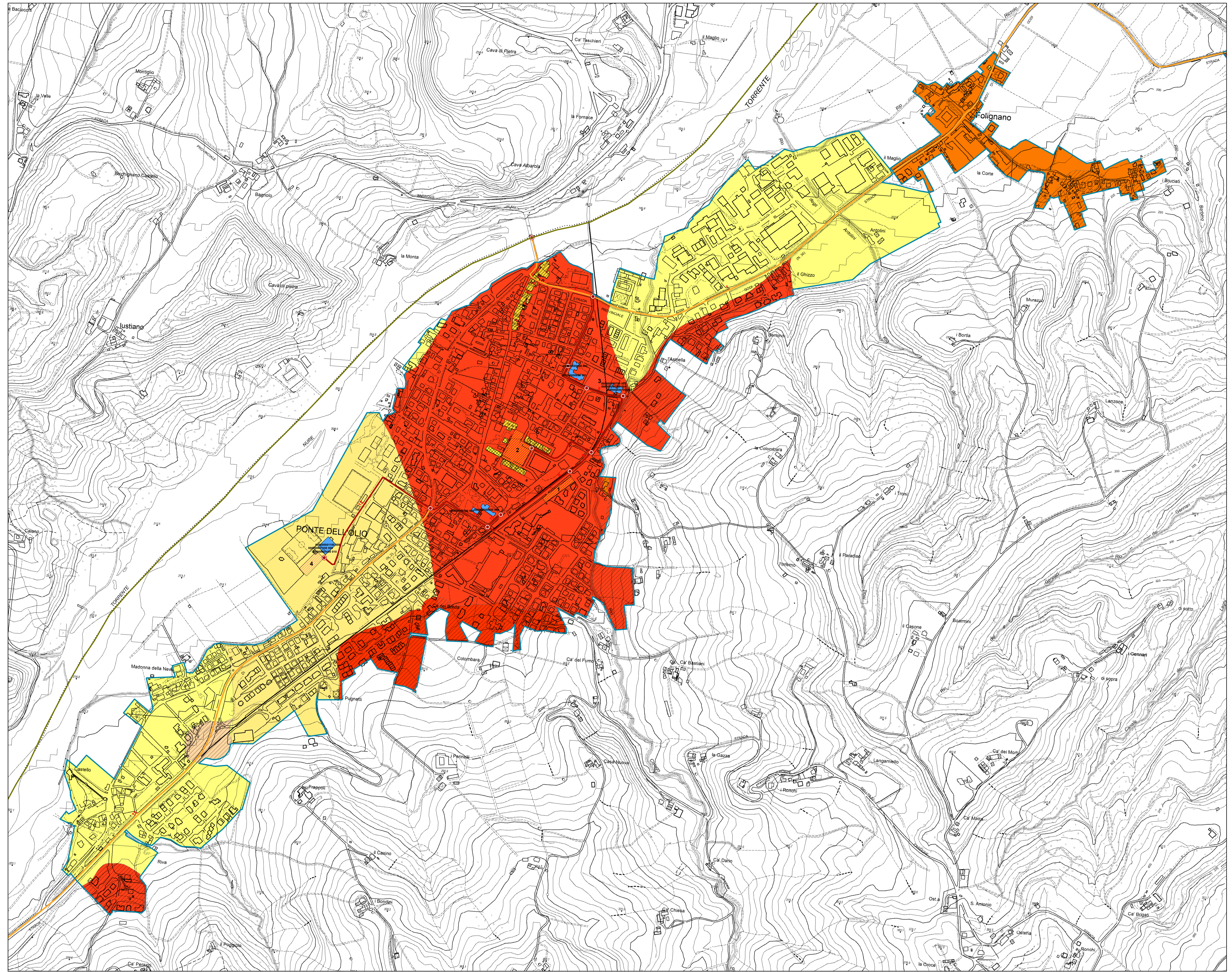
- Codice Comune 036
Codice Provincia 033
-  Aree di indagine
 -  Limite amministrativo
 -  Edificio strategico
 -  Area di emergenza (AMMASSAMENTO)
 -  Area di emergenza (RICOVERO)
 -  Infrastruttura di accessibilità
 -  Infrastruttura di connessione
 -  Unità strutturale interferente appartenente ad un AS
 -  Unità strutturale non interferente appartenente ad un AS
 -  Unità strutturale interferente isolata
 -  Aggregato strutturale

Zone suscettibili di amplificazioni locali (F.A. $0,1 < T < 0,5$ s)

-  1,1-1,2
-  1,3-1,4
-  1,5-1,6
-  1,7-1,8
-  1,9-2,0
-  2,1-2,2

Zone suscettibili di instabilità (F.A. $0,1 < T < 0,5$ s)

-  1,1-1,2
-  1,5-1,6
-  1,7-1,8
-  1,9-2,0
-  2,1-2,2



0 250 500 Meters