

Attuazione dell'articolo 11 dalla legge 24 giugno 2009, n.77

MICROZONAZIONE SISMICA

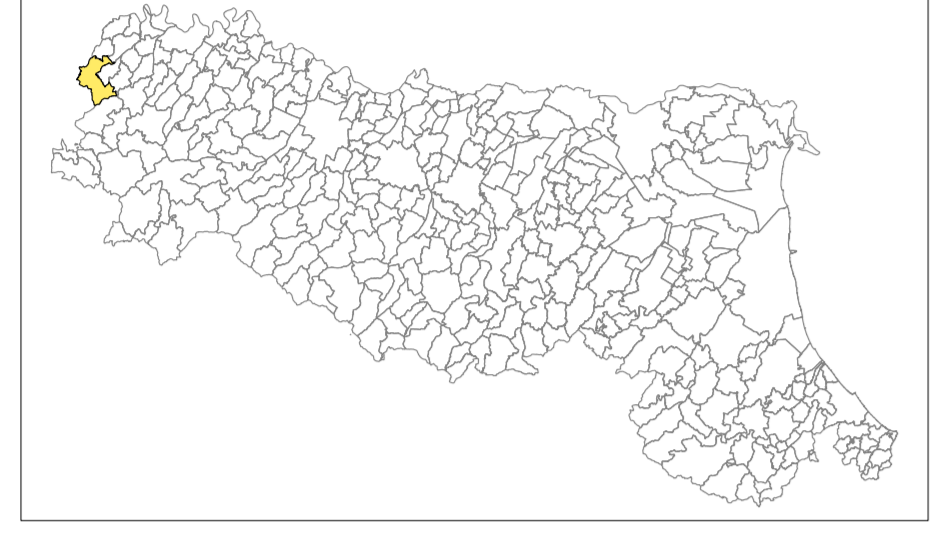
Carta di microzonazione sismica


Fattore di amplificazione dell'accelerazione di picco
PGA

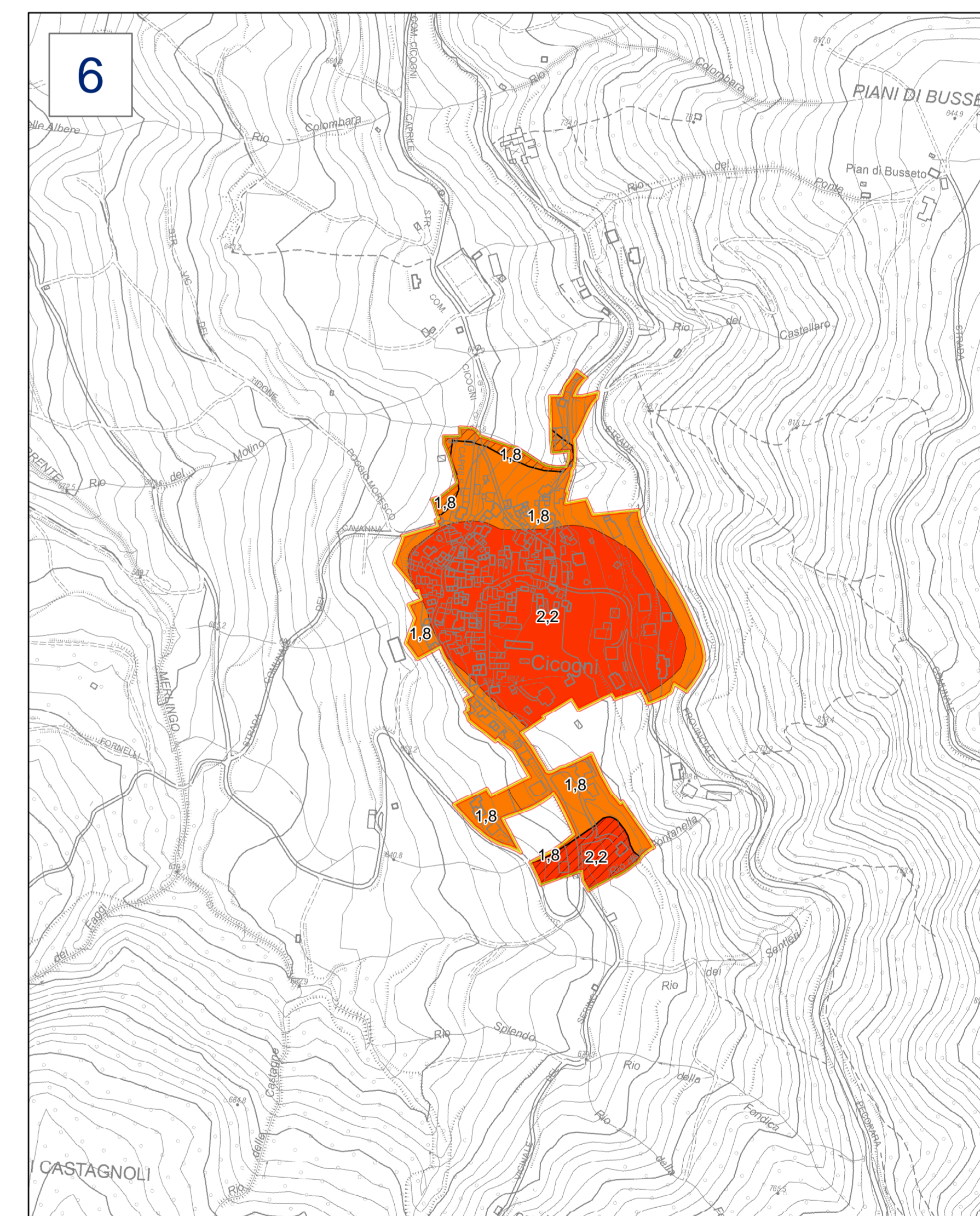
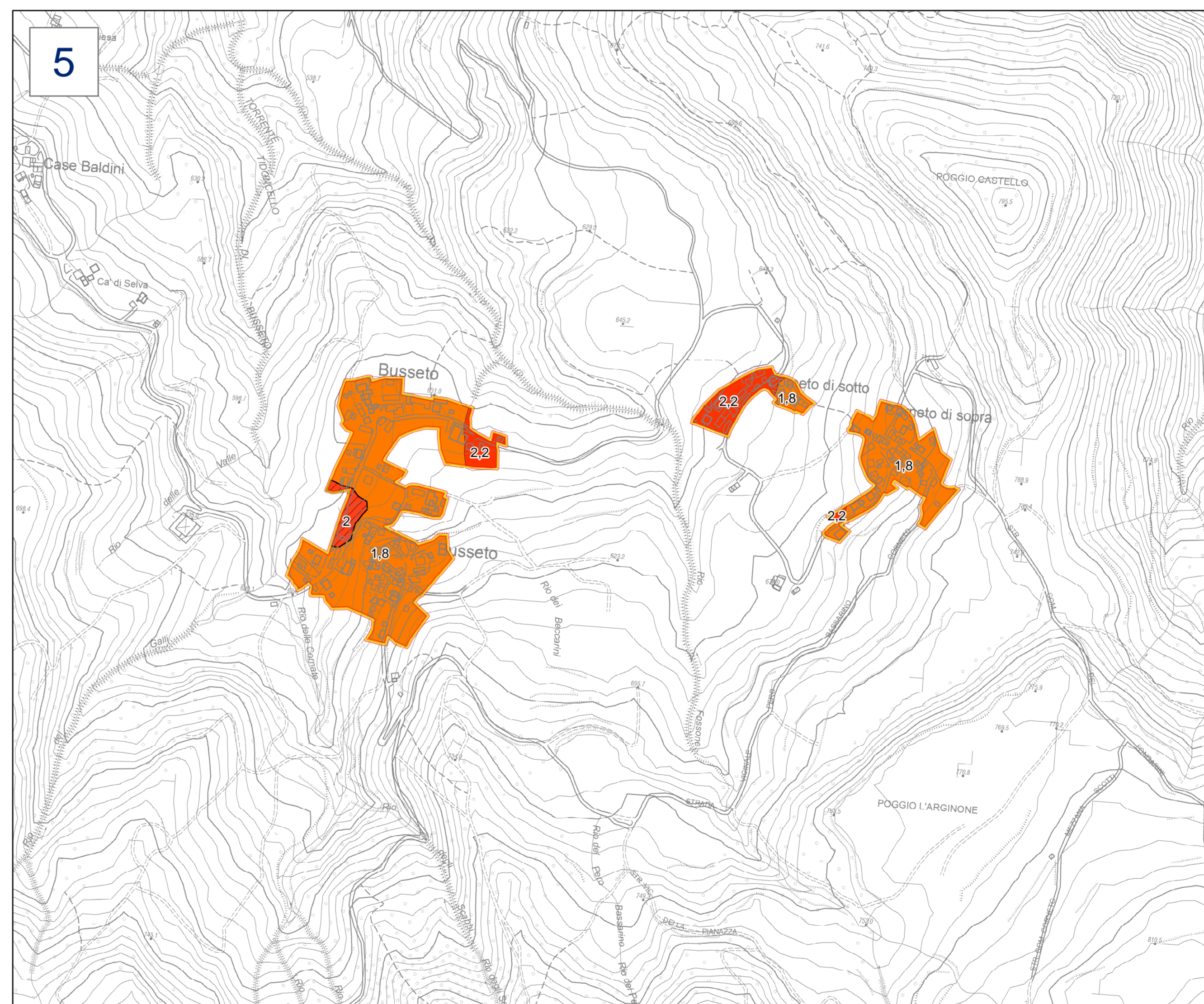
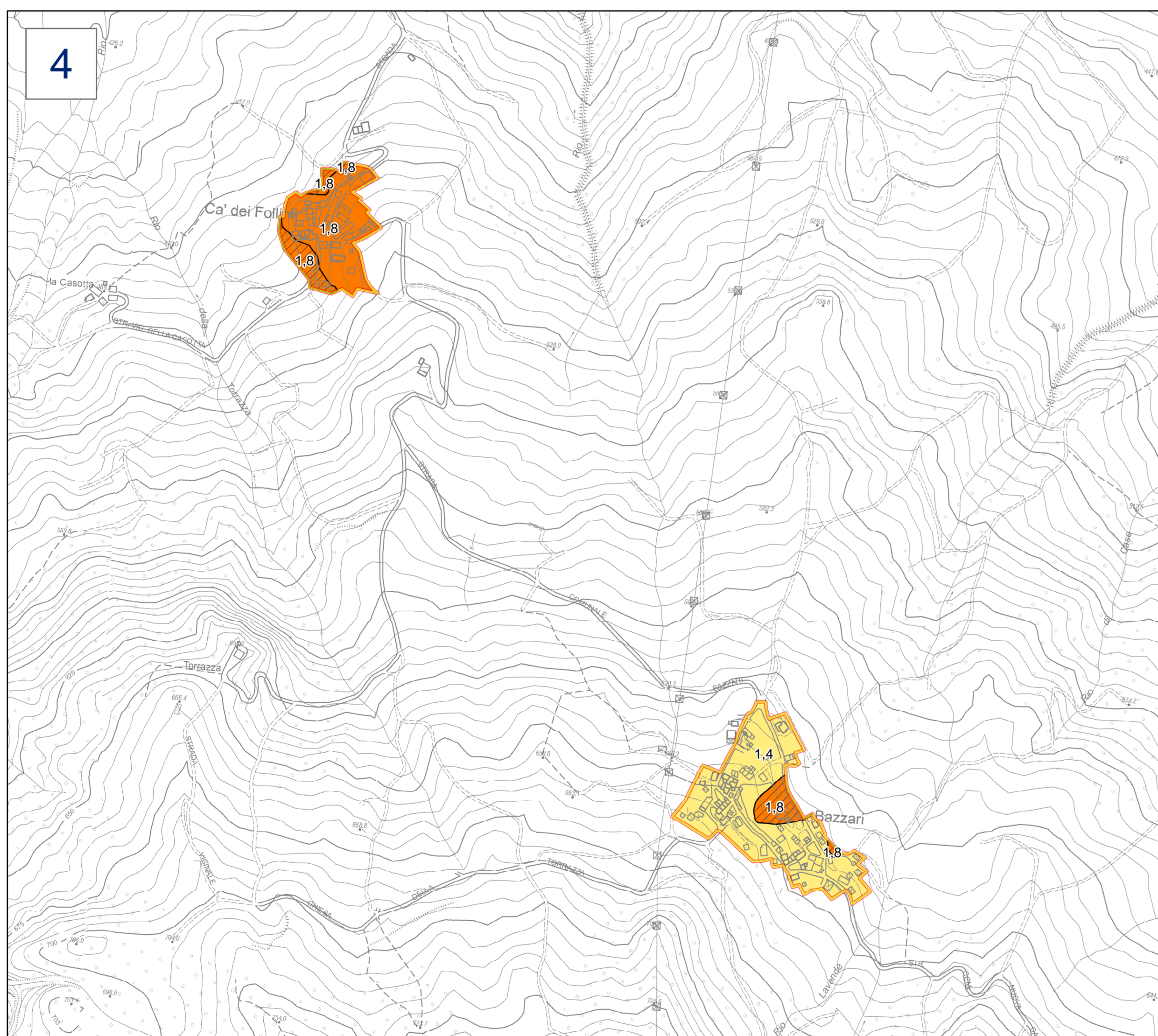
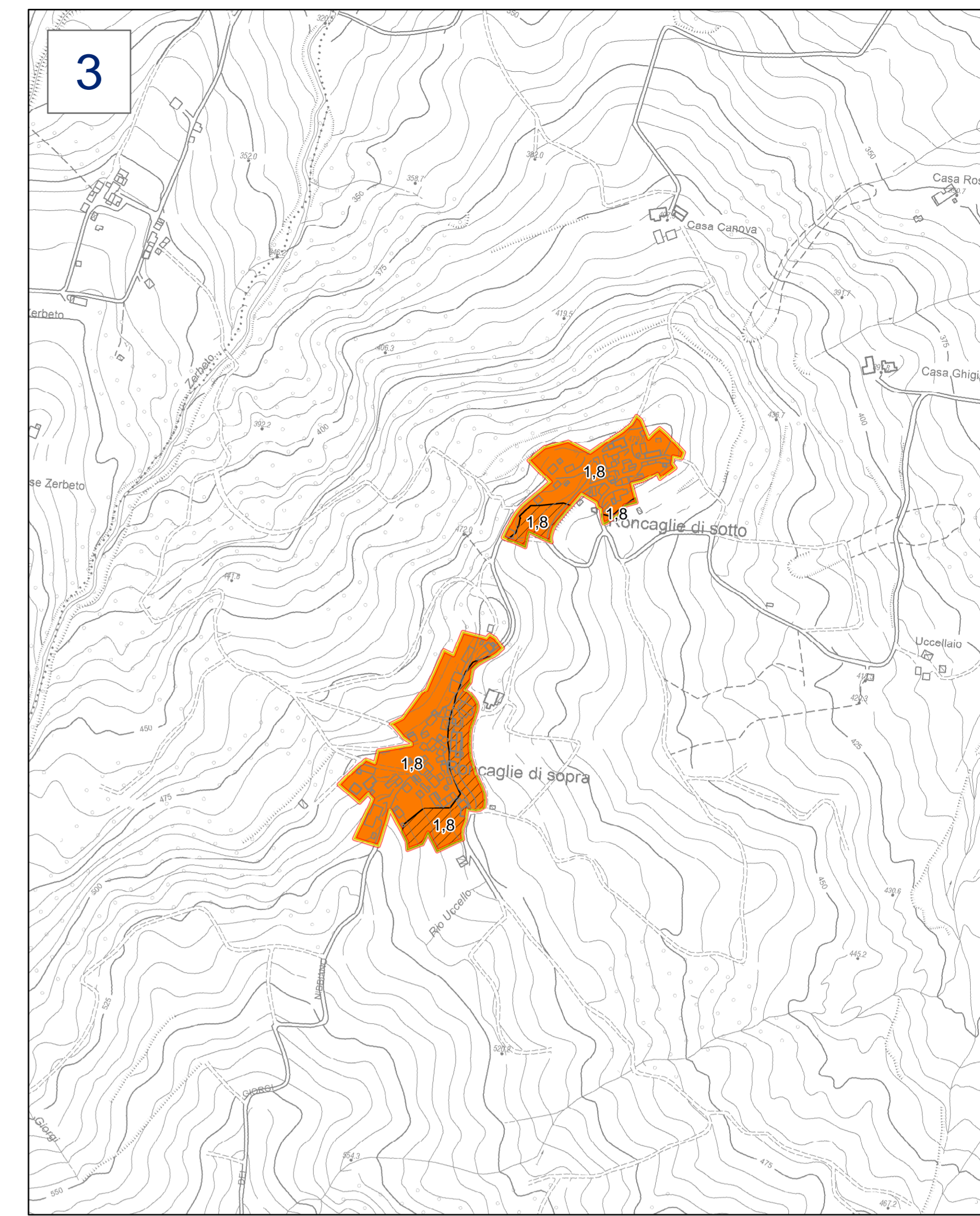
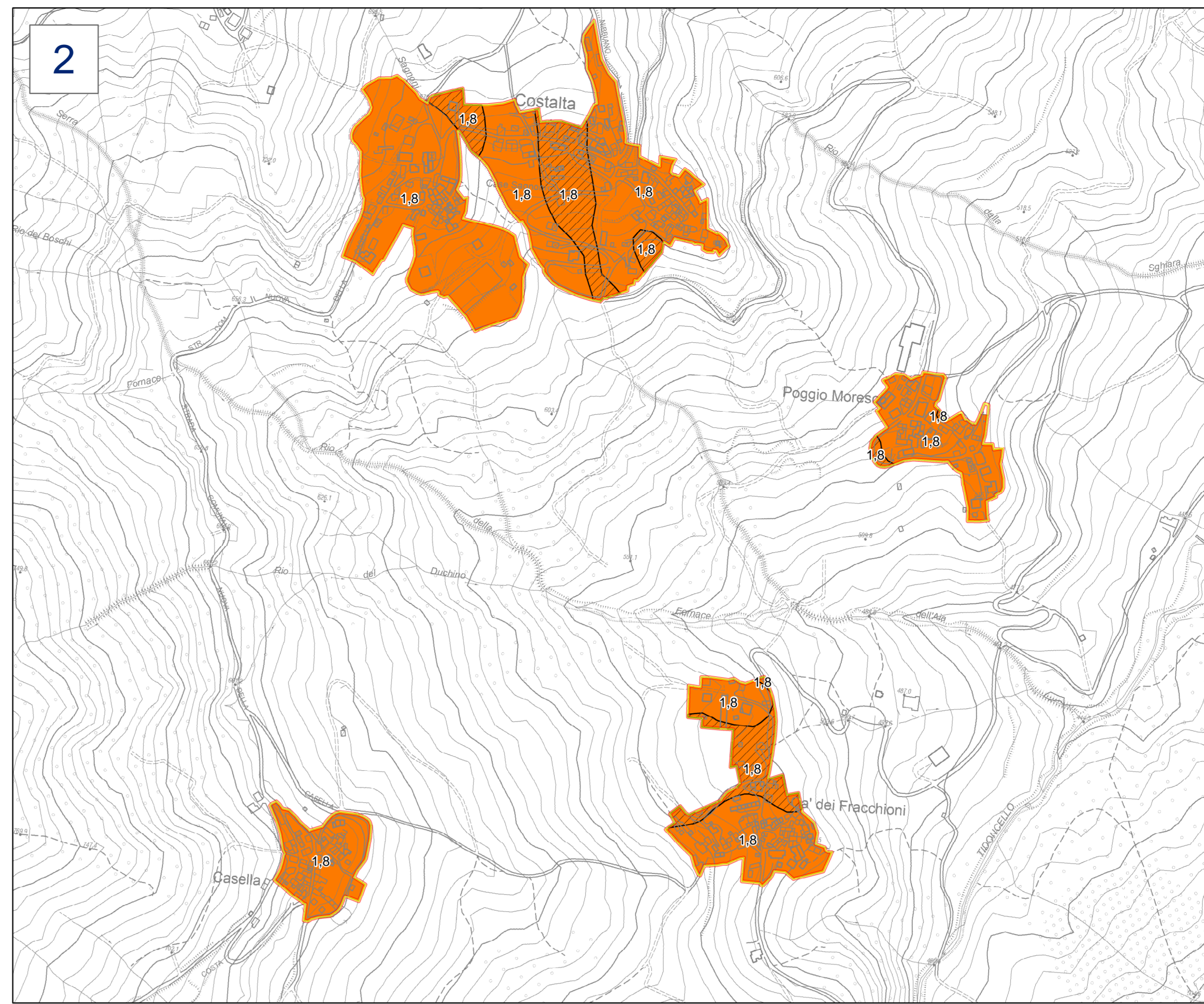
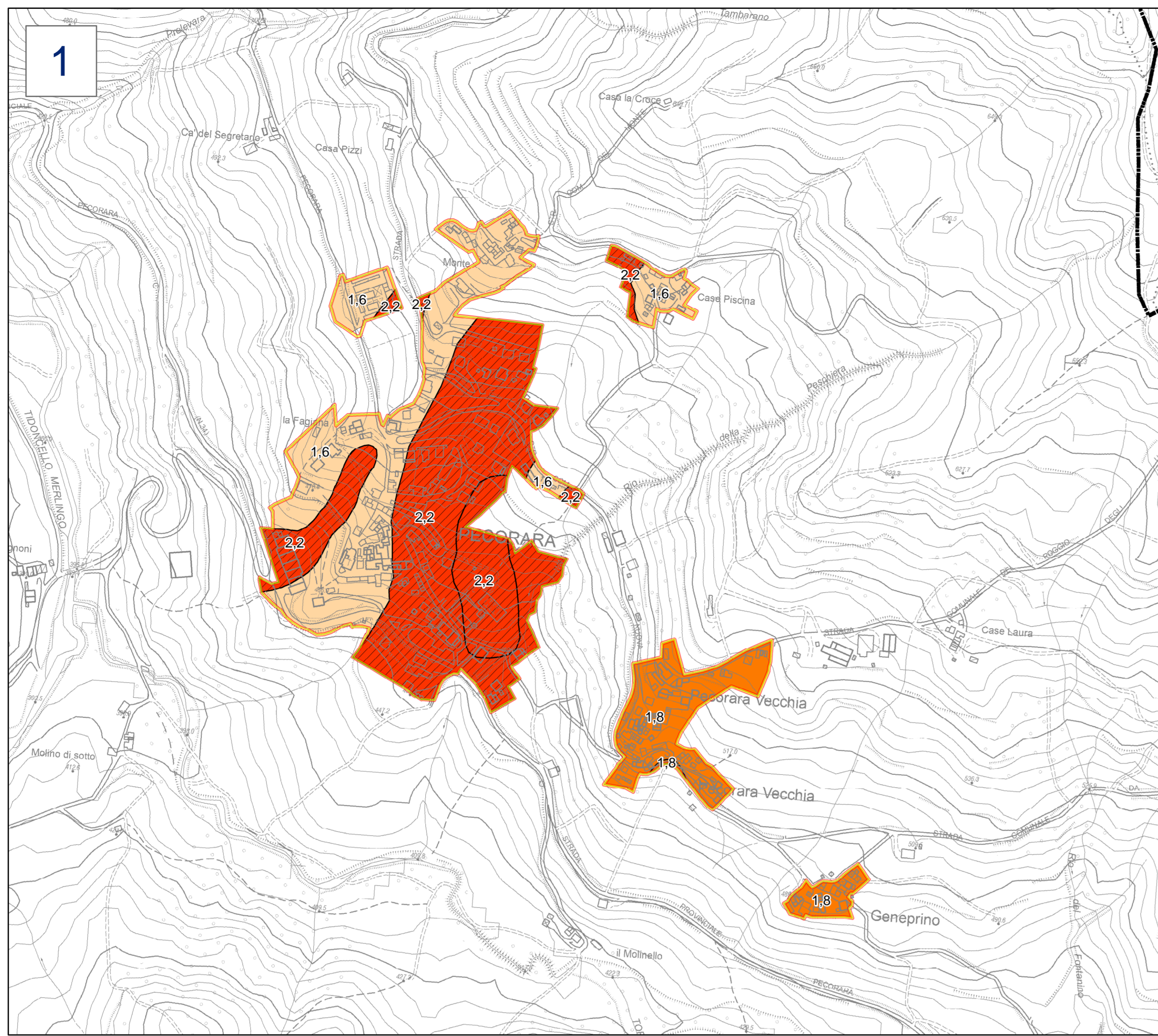
scala 1 : 5.000 Tav. 2-2

Regione Emilia-Romagna

Comune di Alta Val Tidone



Regione	Emilia-Romagna	Soggetto realizzatore	Data
			Dicembre 2022



Legenda

Zone stabili suscettibili di amplificazioni locali

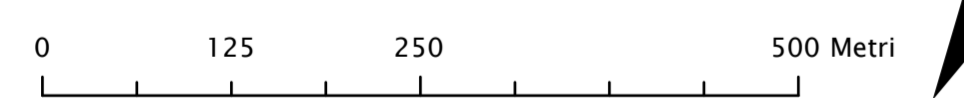
- FA PGA = 1.3 - 1.4
- FA PGA = 1.5 - 1.6
- FA PGA = 1.7 - 1.8
- FA PGA = 1.9 - 2.0
- FA PGA = 2.1 - 2.2
- FA PGA = 2.3 - 2.4

Zone di attenzione per instabilità

- FA PGA = 1.5 - 1.6
- FA PGA = 1.7 - 1.8
- FA PGA = 1.9 - 2.0
- FA PGA = 2.1 - 2.2

Area oggetto di approfondimento di 2° livello

Limite comunale



N

