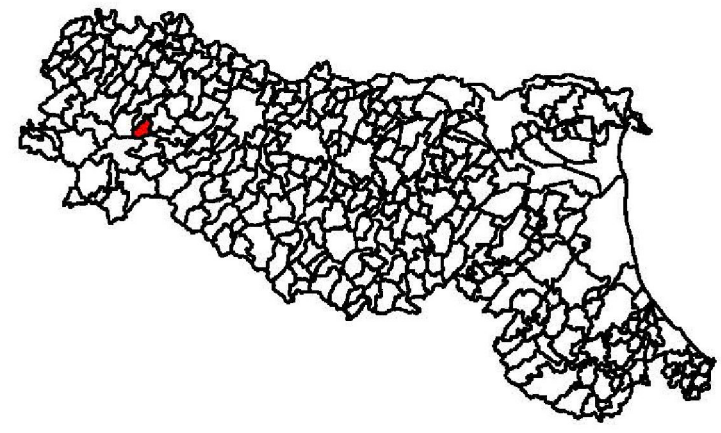


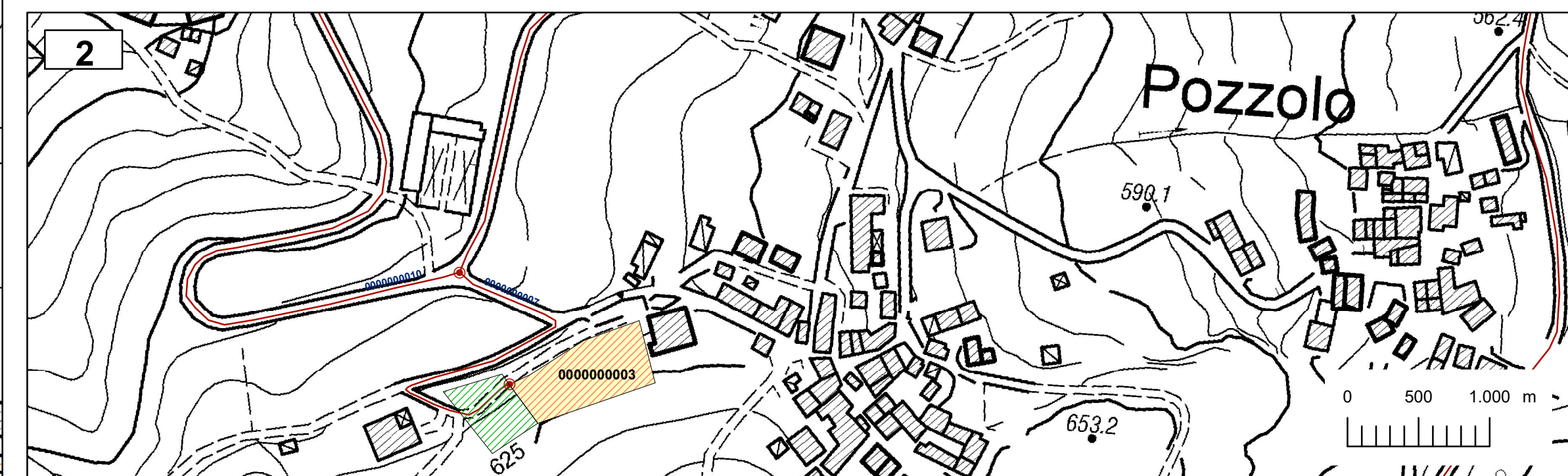
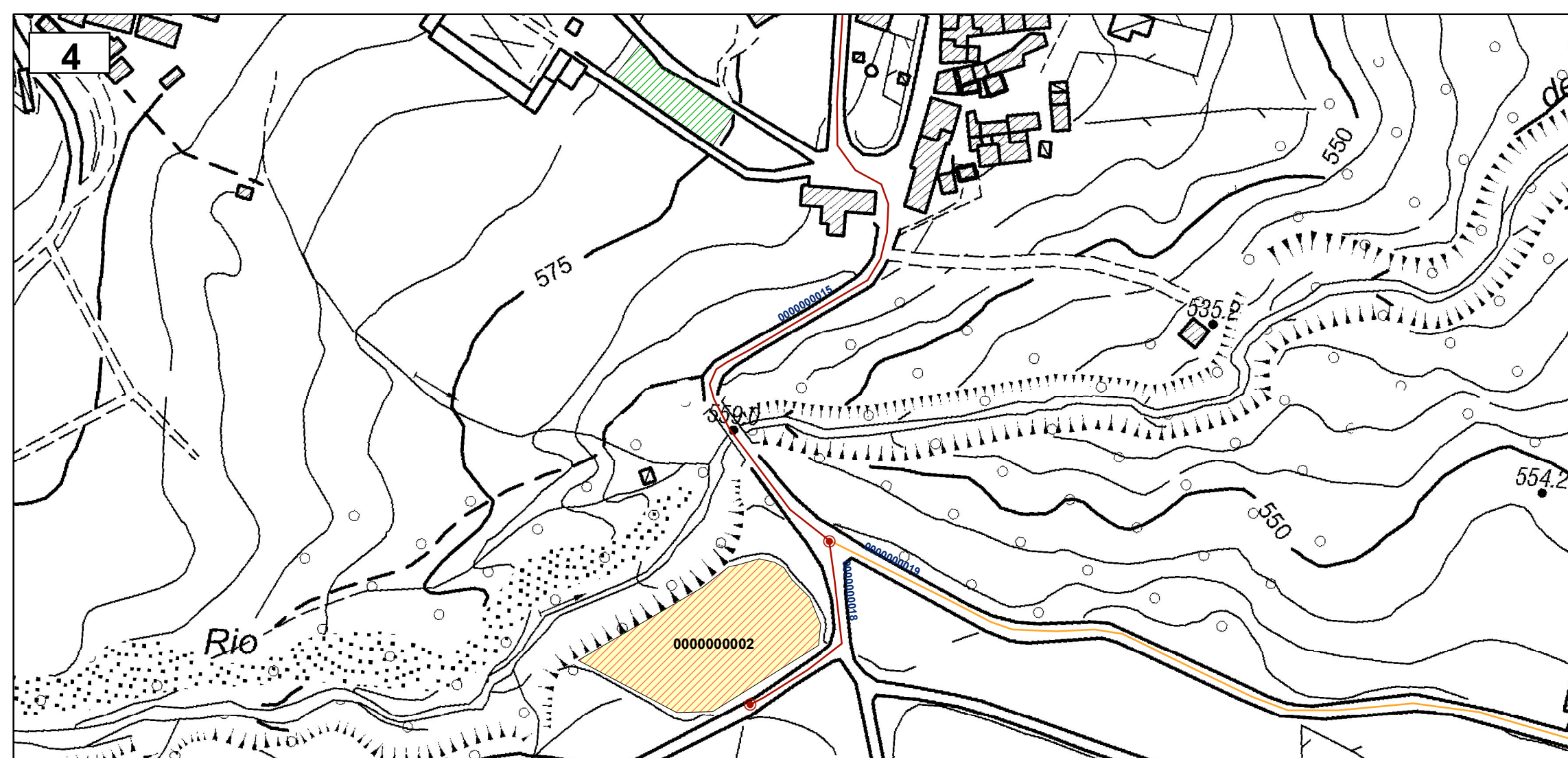
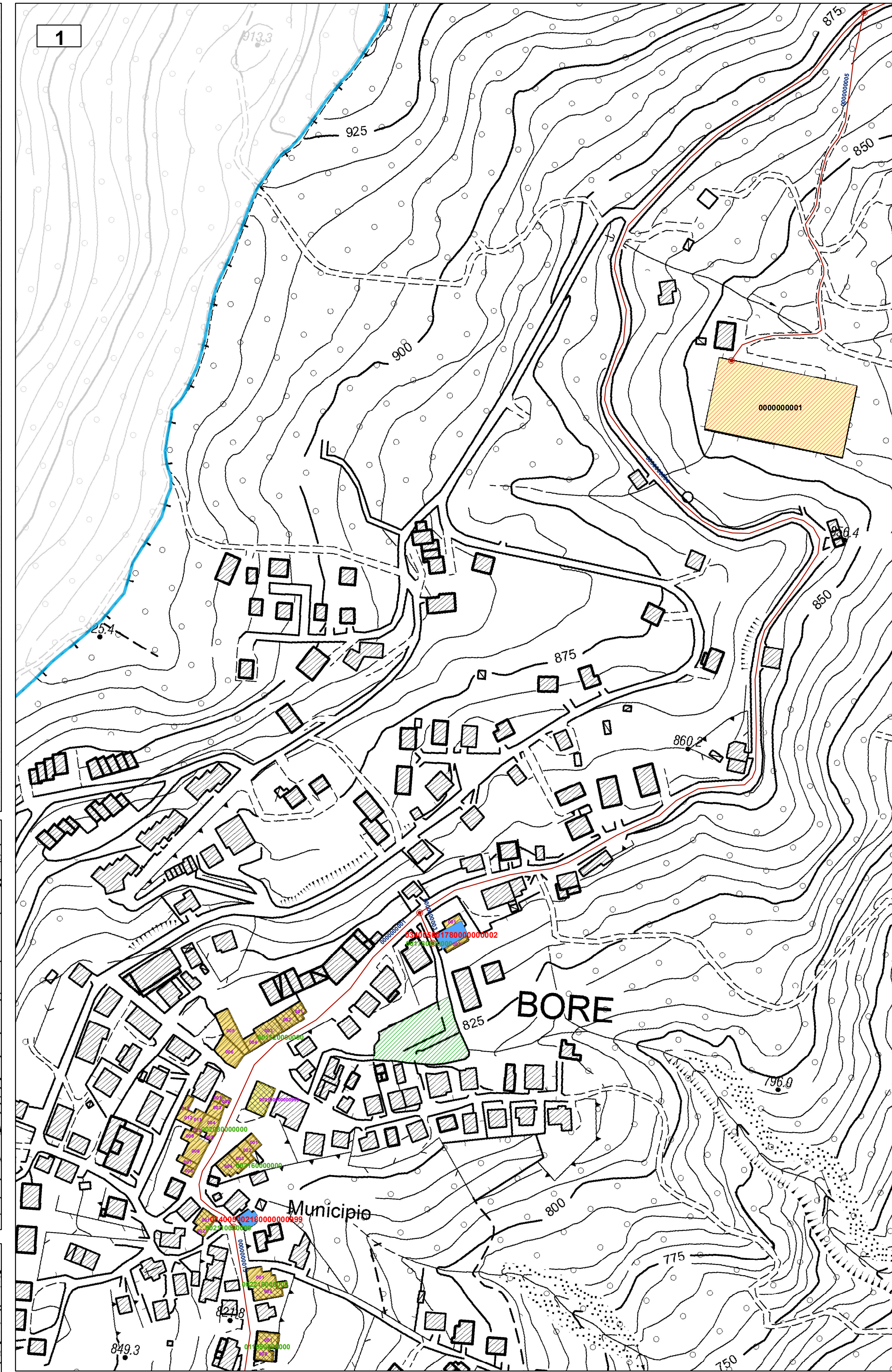
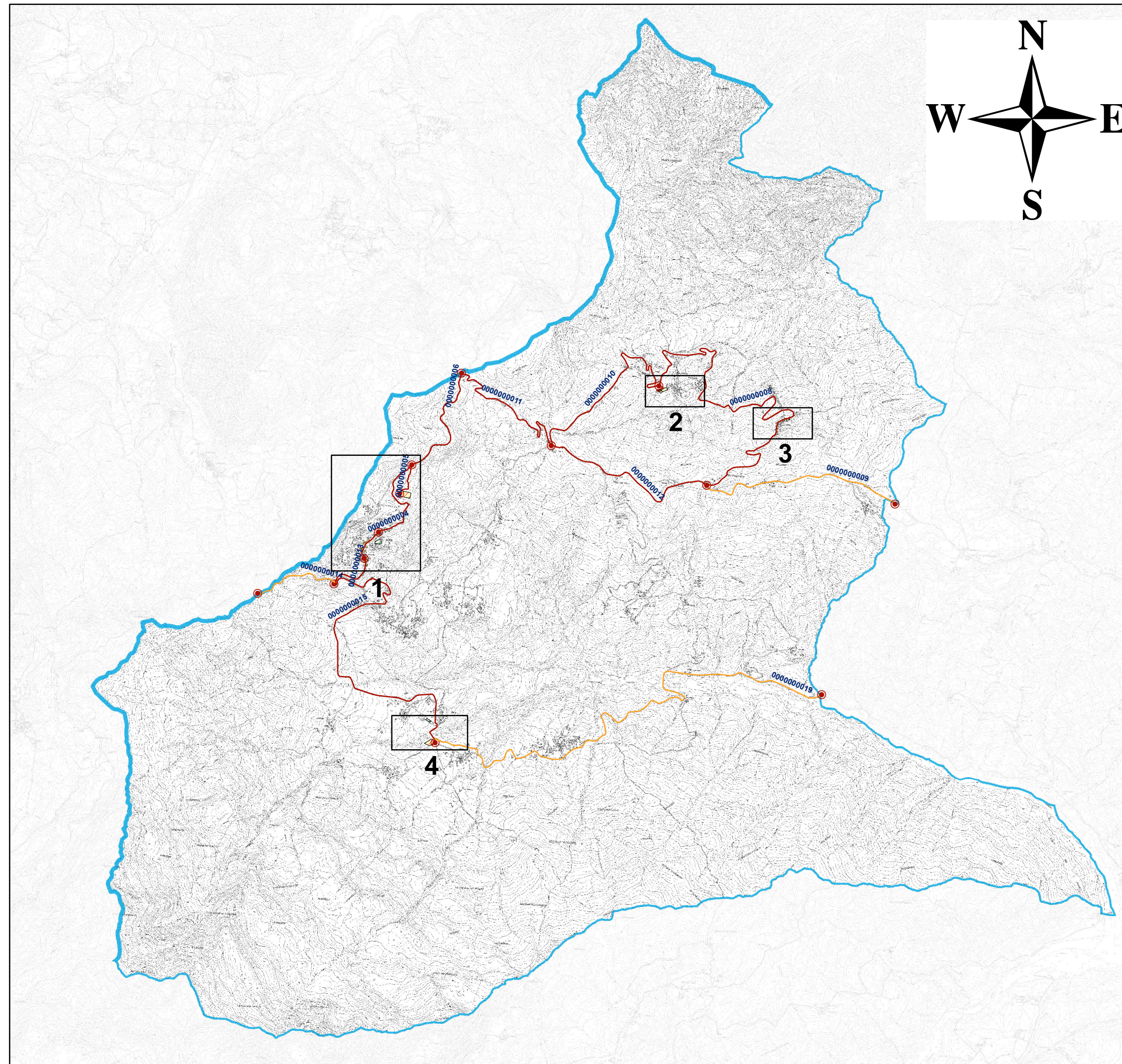
ANALISI DELLA CONDIZIONE LIMITE PER L'EMERGENZA (CLE)

Scala 1:2000

Regione Emilia - Romagna
Comune di Bore



Regione: Emilia Romagna	Soggetto realizzatore: Dott. Geol. Federico Madini	Data: Settembre 2018
	Collaboratori: Dott. Geol. Domenico Bianco Dott. Geol. Gabriele Oppo Dott. Geol. Massimiliano Trauzzi	



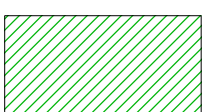



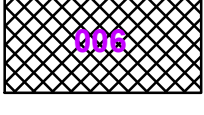

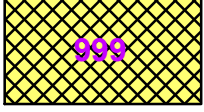
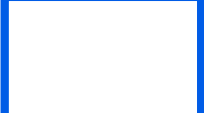


Legenda

Codice Provincia 034

Codice Comune 005

Sistema di gestione dell'emergenza

-  Edificio strategico
-  Area di emergenza (RICOVERO + AMMASSAMENTO)
-  Area di attesa
-  Infrastruttura di accessibilità
-  Infrastruttura di connessione
-  Aggregato strutturale interferente
-  Unità strutturale interferente appartenente ad un AS
-  Unità strutturale non interferente appartenente ad un AS
-  Unità strutturale interferente isolata
-  Limite comunale