

Attuazione dell'articolo 11 della legge 24 giugno 2009, n. 77

MICROZONAZIONE SISMICA

Carta delle frequenze naturali dei terreni

scala 1:5.000

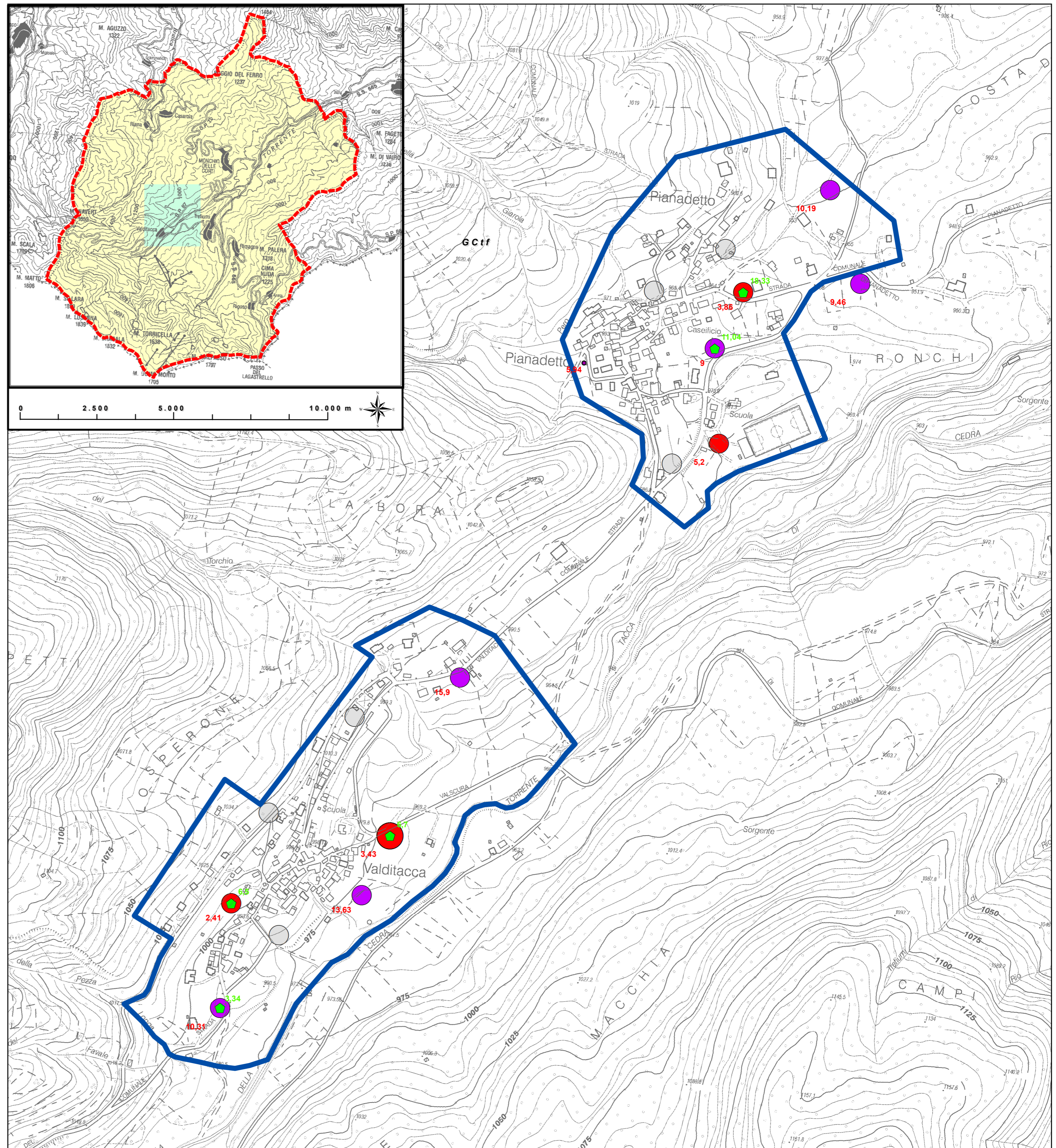
Regione Emilia – Romagna

Comune di Monchio delle Corti


 Ambiti A_2 Pianadetto e A_3 Valditacca








Regione	Soggetto realizzatore	Data
Emilia Romagna	RAGGRUPPAMENTO TEMPORANEO DI PROFESSIONISTI Mandatario:  Direttori tecnici: Dr. Geol. Carlo Caleffi Dr. Geol. Francesco Coruffi Mandatari: Dr. Geol. Marco Baldi Dr. Geol. Domenico Bianco Dr. Geol. Stefano Castagnetti Dr. Geol. Federico Madini Dr. Geol. Massimiliano Trauzzi	Maggio 2013




Legenda


 Area oggetto di studio


FREQUENZE NATURALI DEI TERRENI

Classi di frequenza (Hz)	
Nessun picco significativo	
$f_0 \leq 1$ Hz	
$1 \text{ Hz} < f_0 \leq 2$ Hz	
$2 \text{ Hz} < f_0 \leq 8$ Hz	
$f_0 > 8$ Hz	

FREQUENZA PRINCIPALE E RELATIVO VALORE (Hz)

 Ampiezza H_{SVR} ≥ 3

 Ampiezza H_{SVR} < 3

 ⁸ FREQUENZA SECONDARIA (QUANDO PRESENTE) E RELATIVO VALORE (Hz)

