

ANALISI DELLA CONDIZIONE LIMITE PER L'EMERGENZA (CLE)

Scala 1:3.000

Regione Emilia-Romagna
Comune di Toano



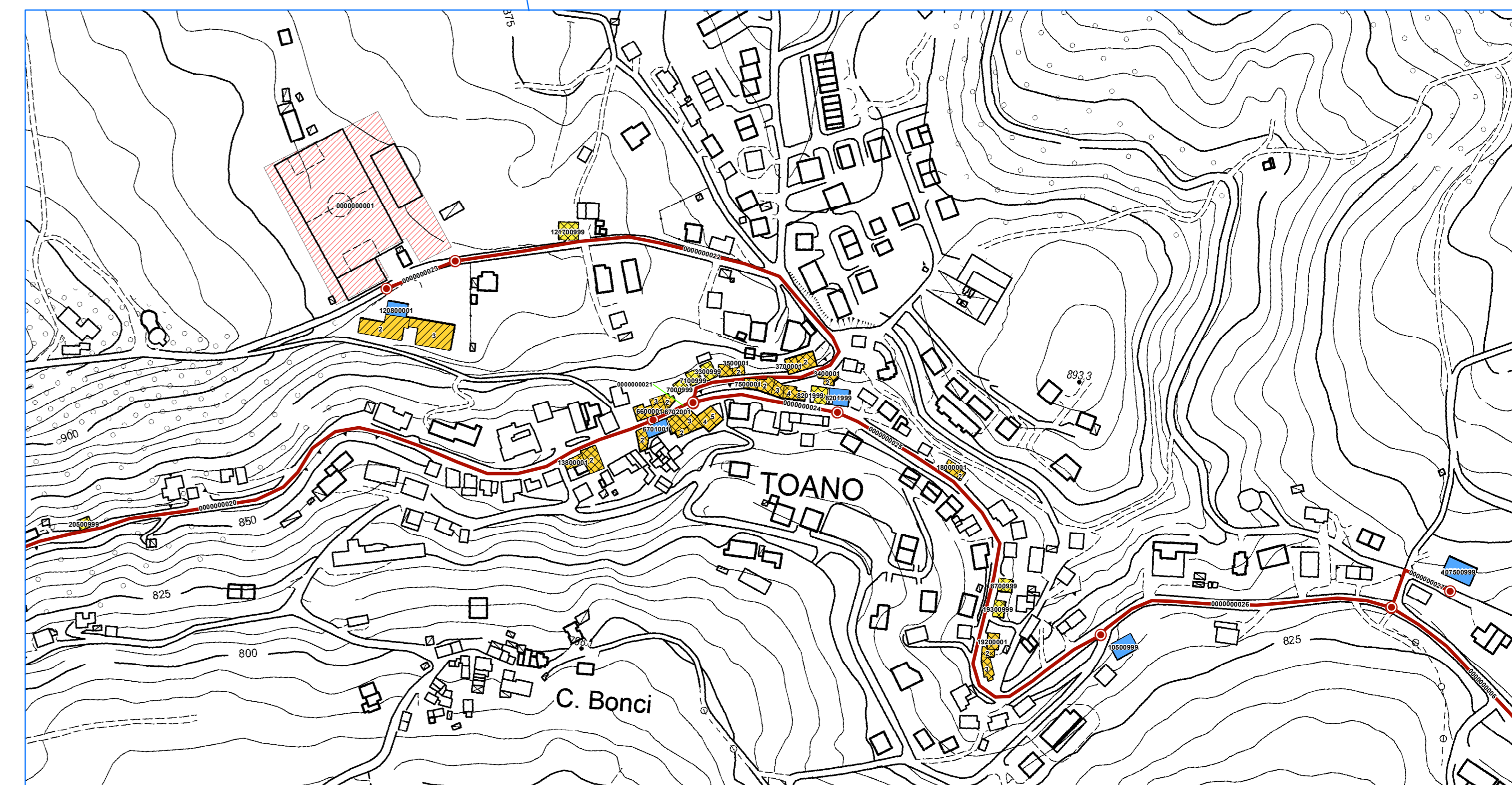
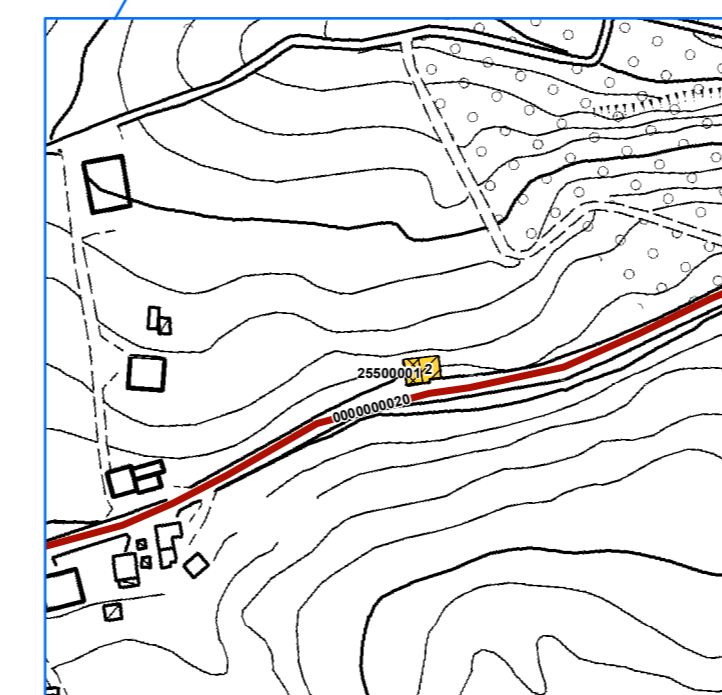
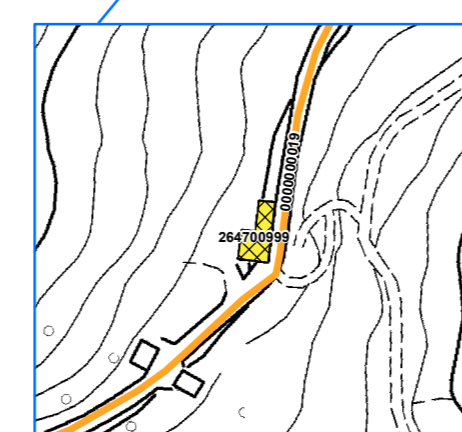
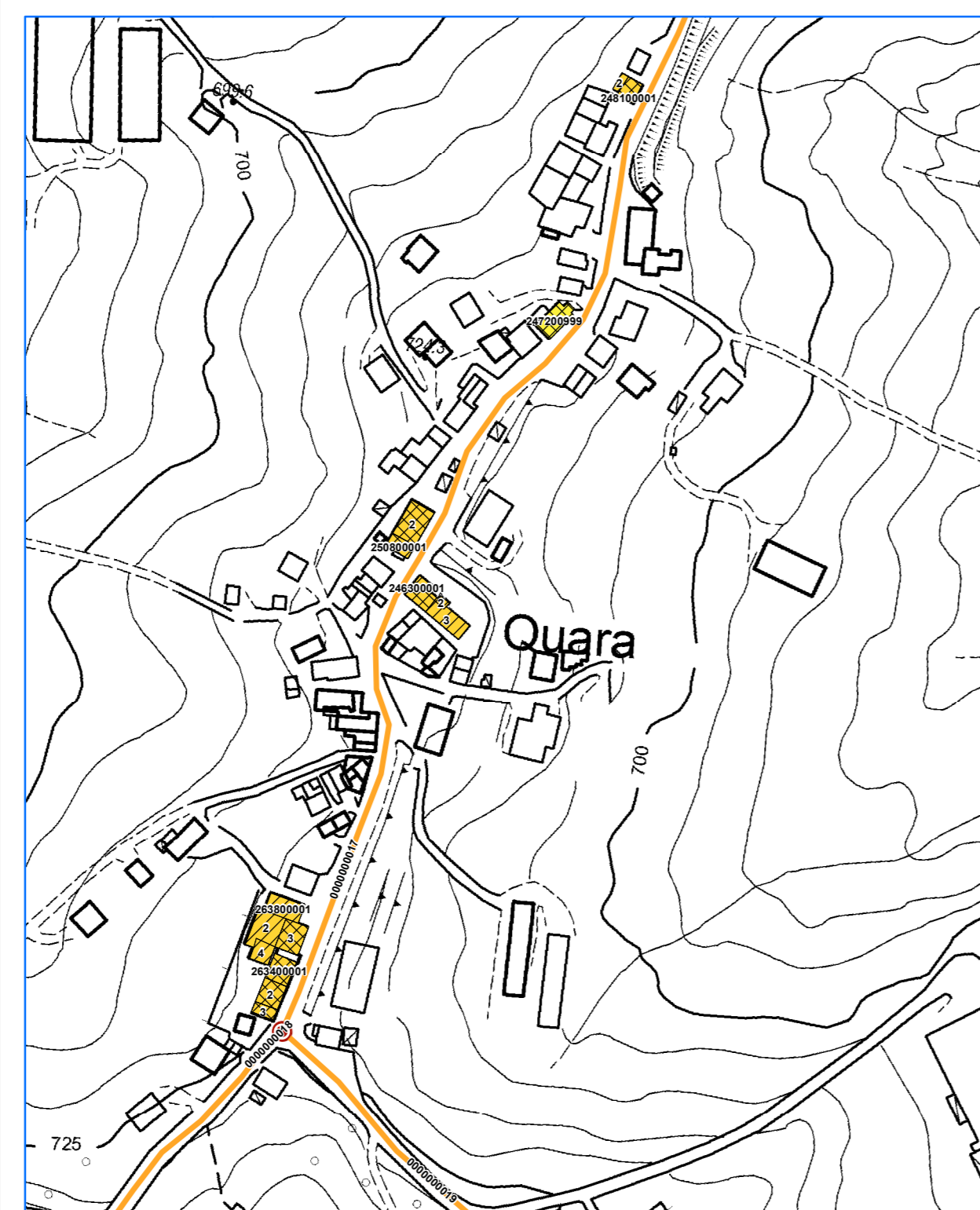
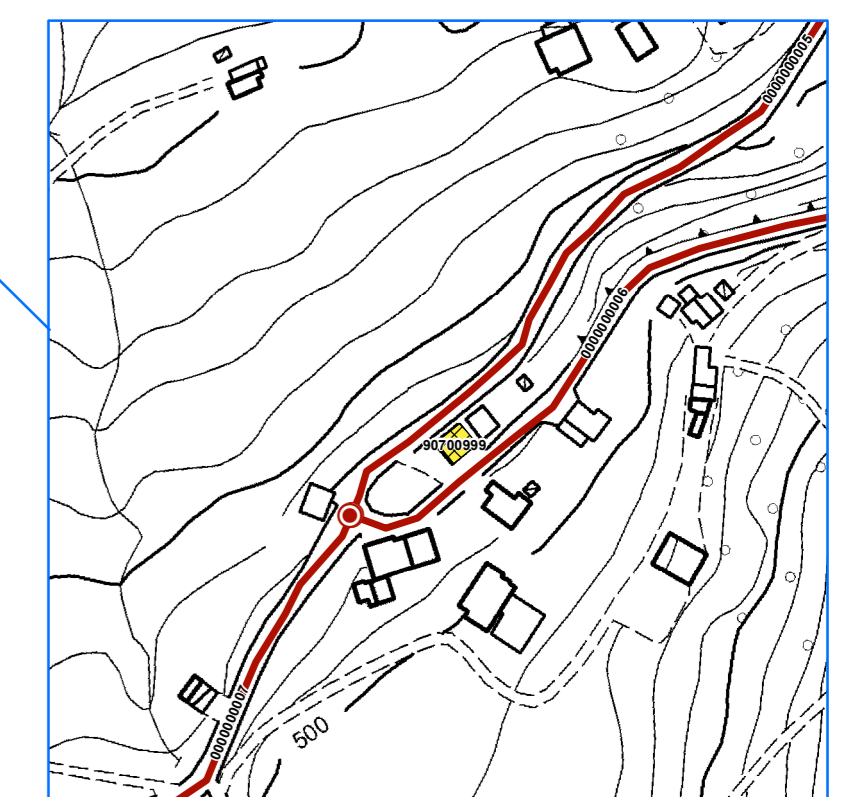
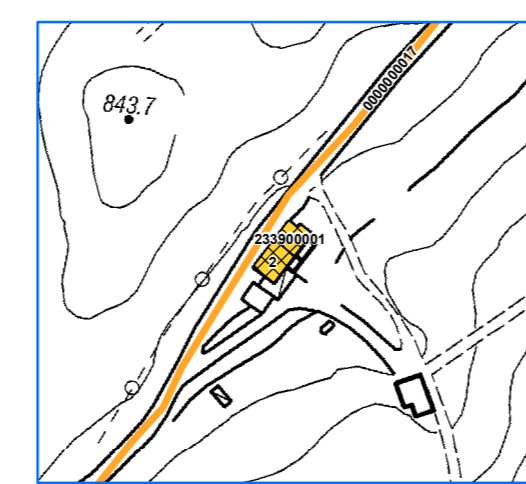
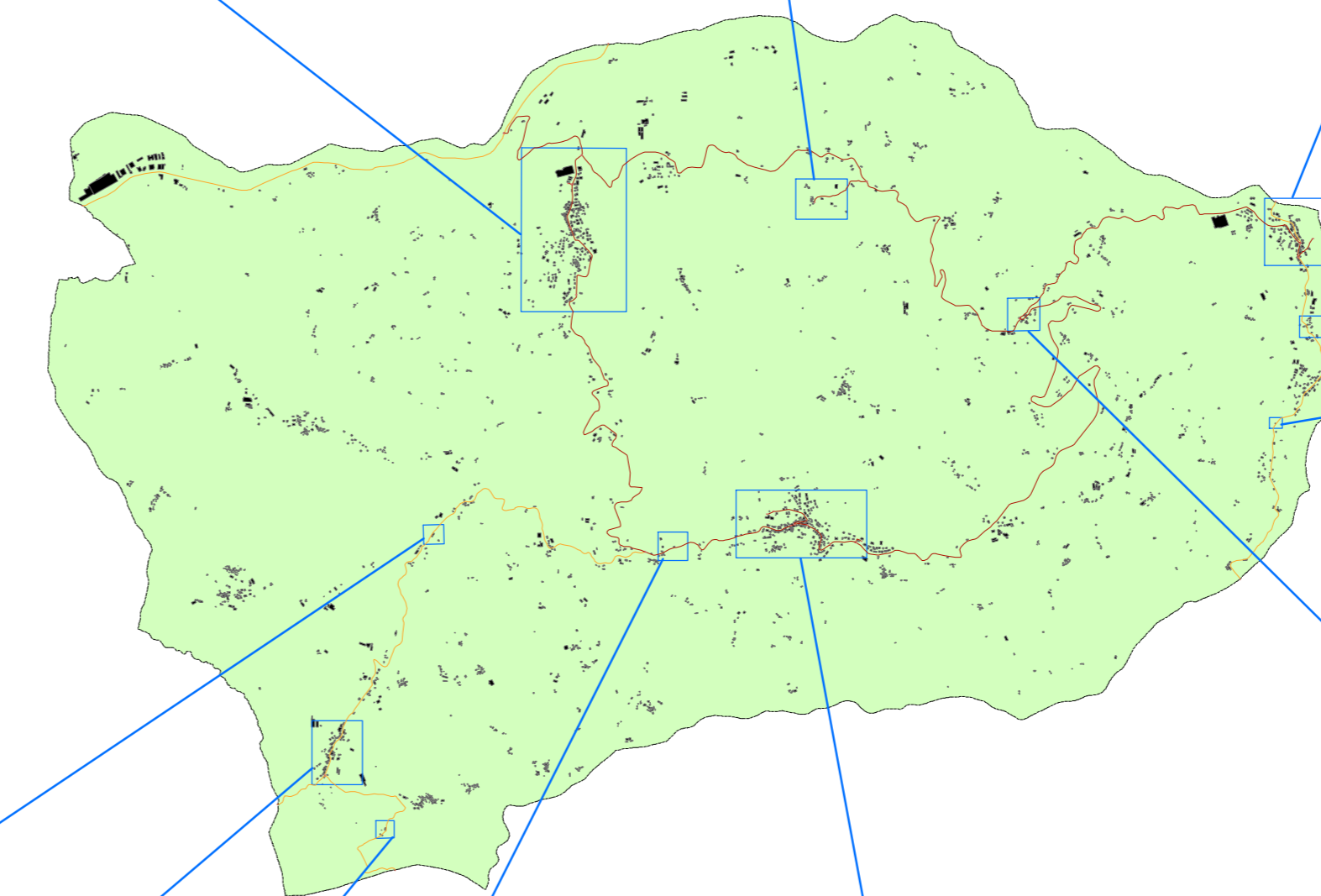
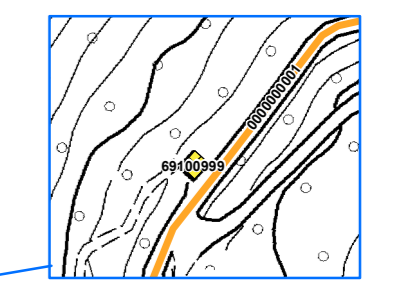
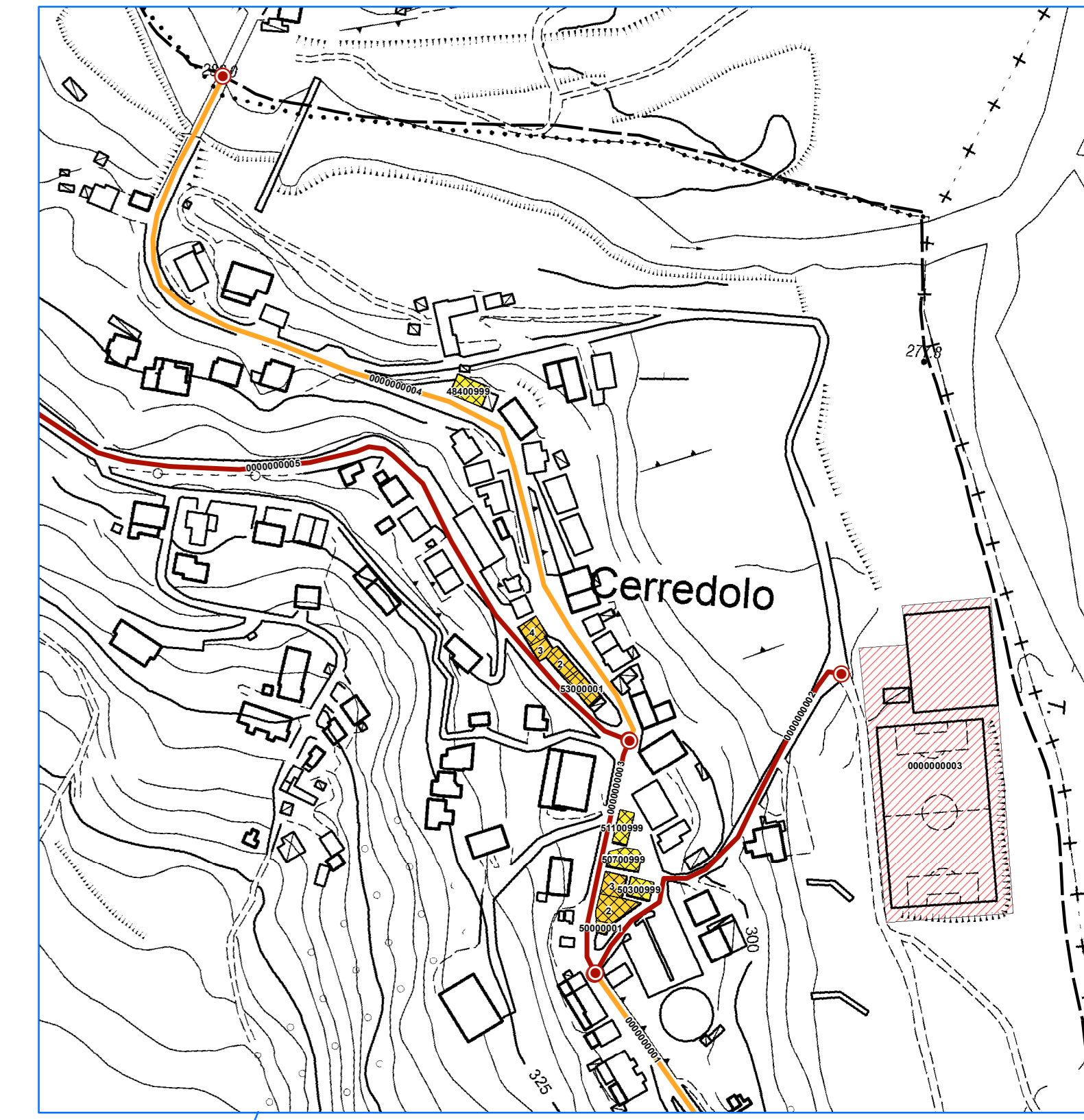
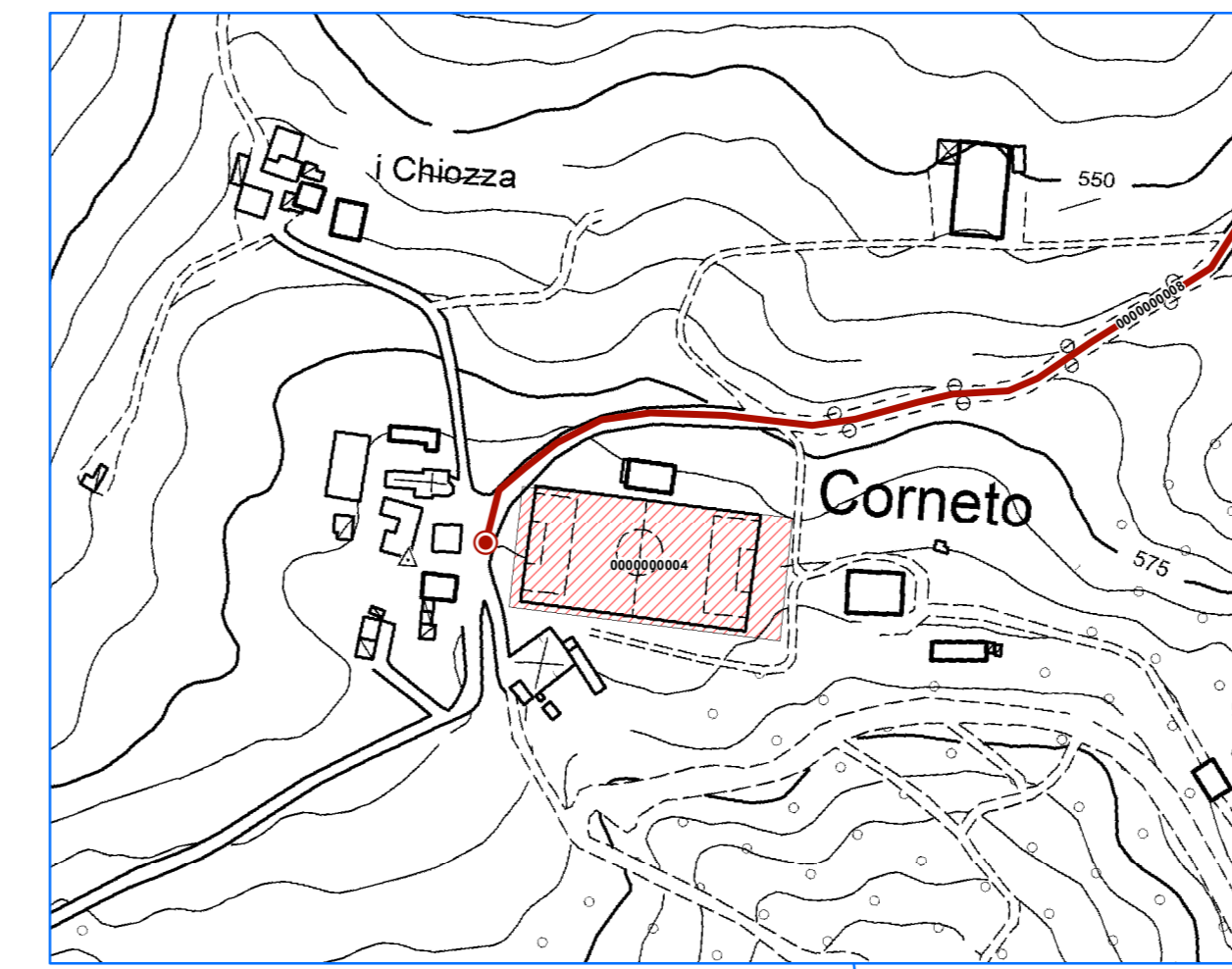
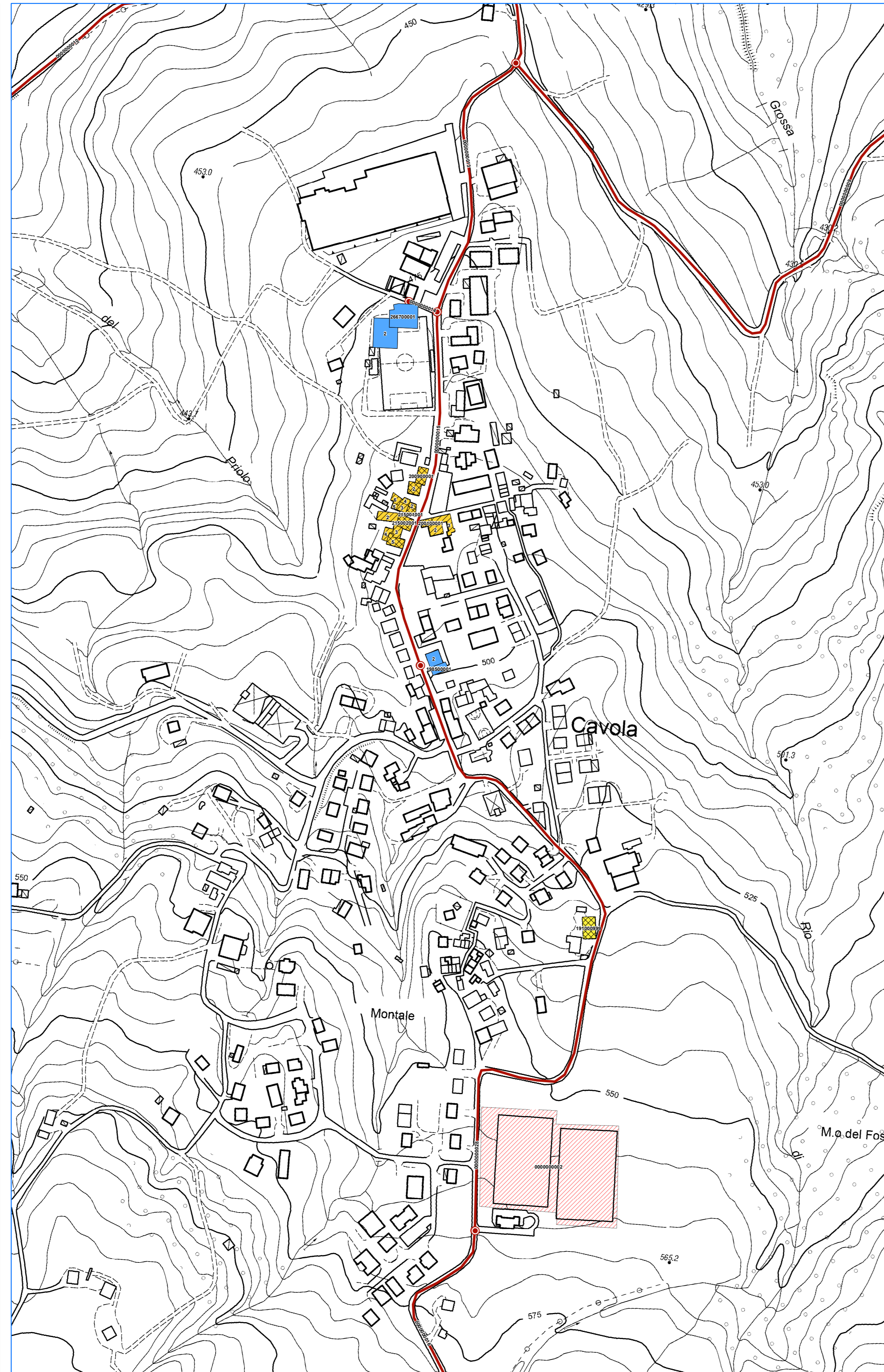
Regione	Soggetto realizzatore	Data
Emilia-Romagna	Dott. Stefano Castagnetti Dott.ssa Ing. Giulia Mainardi Collaboratori: Dott. Geol. Marco Baldi Dott. Geol. Gian Marco Veneziani	Giugno 2020

Legenda

Codice Provincia: 035
Codice Comune: 041

Sistema di gestione dell'emergenza

- Edificio strategico
- Area di emergenza (AMMASSAMENTO)
- Area di emergenza (RICOVERO)
- Area di emergenza (AMMASSAMENTO - RICOVERO)
- Infrastruttura di connessione
- Infrastruttura di accessibilità
- Aggregato strutturale interferente
- Unità strutturale interferente appartenente ad un AS
- Unità strutturale non interferente appartenente ad un AS
- Unità strutturale interferente isolata
- Confine comunale



0 50 100 200 300 Meters

Base cartografica: DBTR2013 Regione Emilia - Romagna