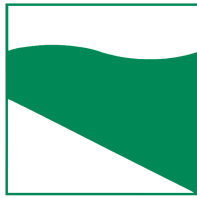




PROTEZIONE CIVILE
Presidenza del Consiglio dei Ministri
Dipartimento della Protezione Civile



Regione Emilia Romagna



CONFERENZA DELLE REGIONI E
DELLE PROVINCE AUTONOME

Attuazione dell'articolo 11 dalla legge 24 giugno 2009, n.77

MICROZONAZIONE SISMICA

Livello 3

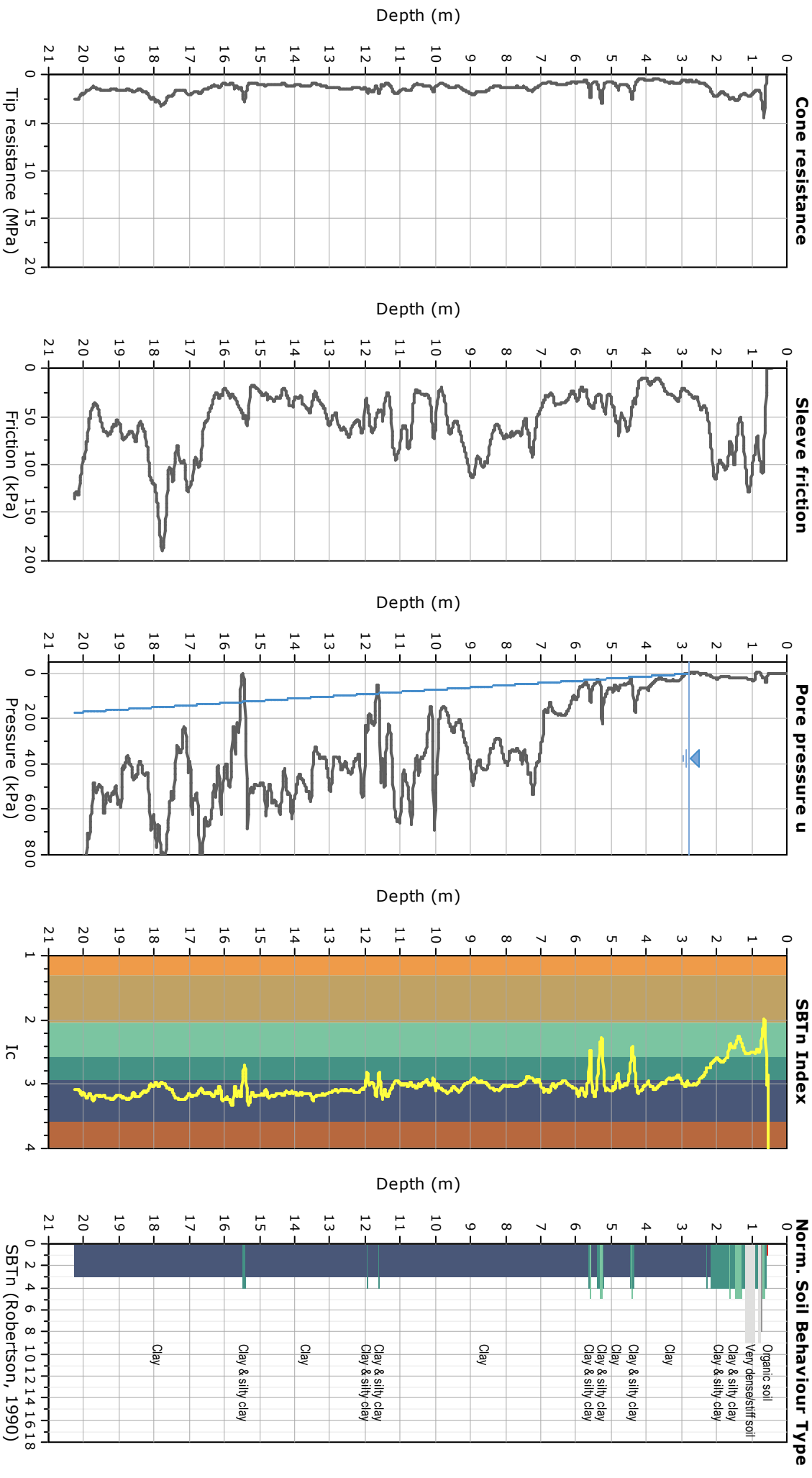
Allegato 2 – Report delle indagini

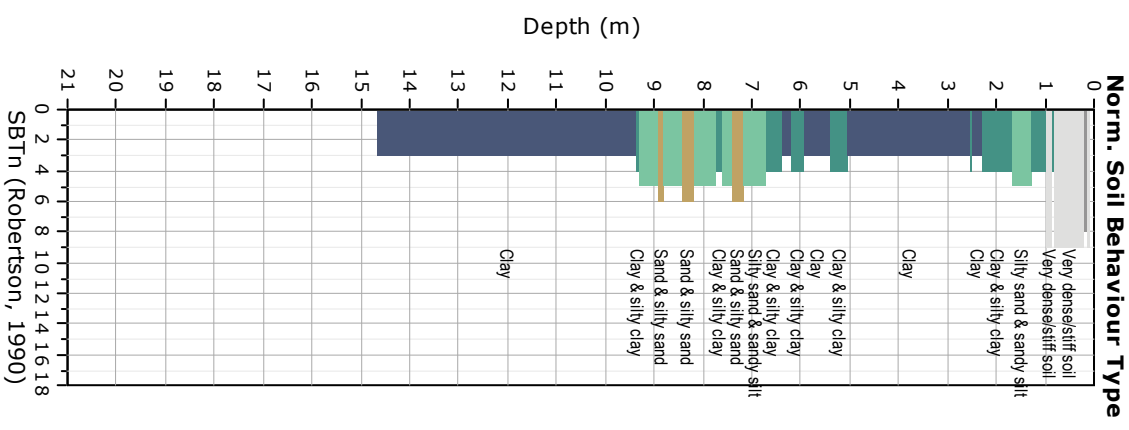
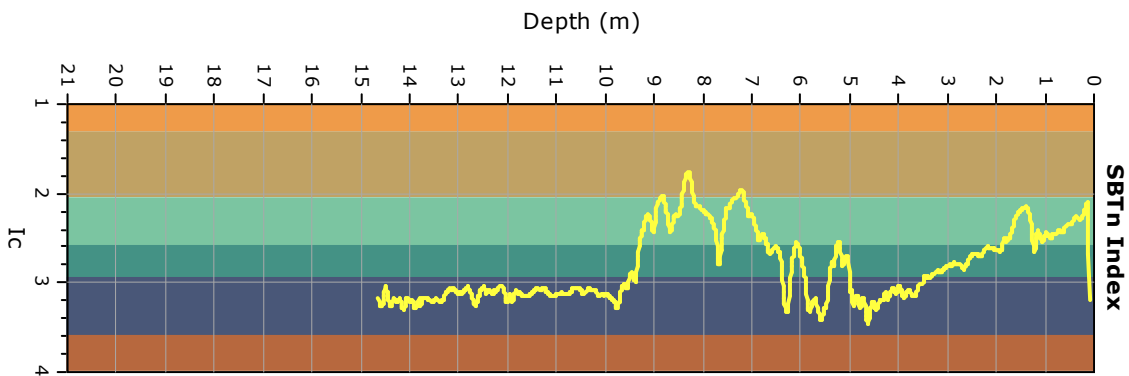
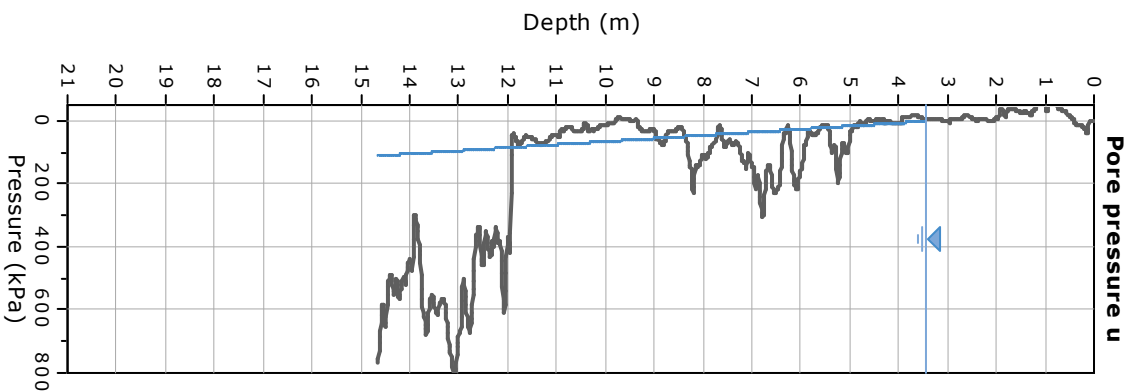
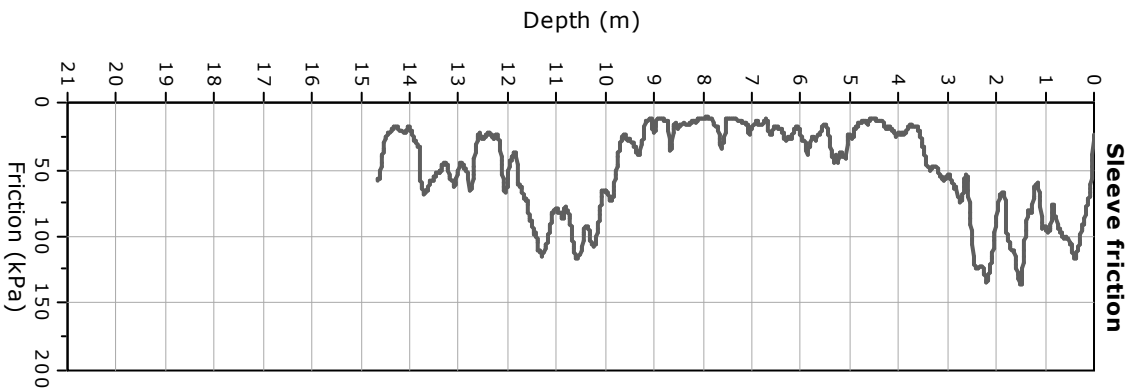
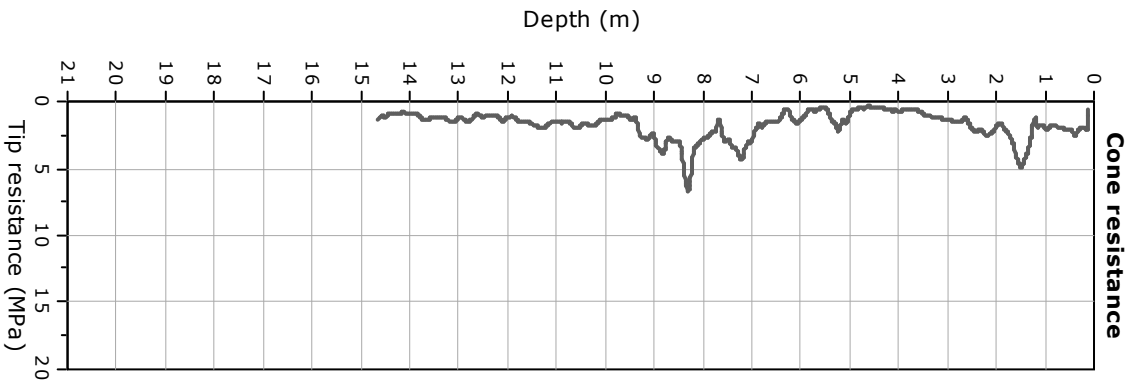
Regione Emilia–Romagna

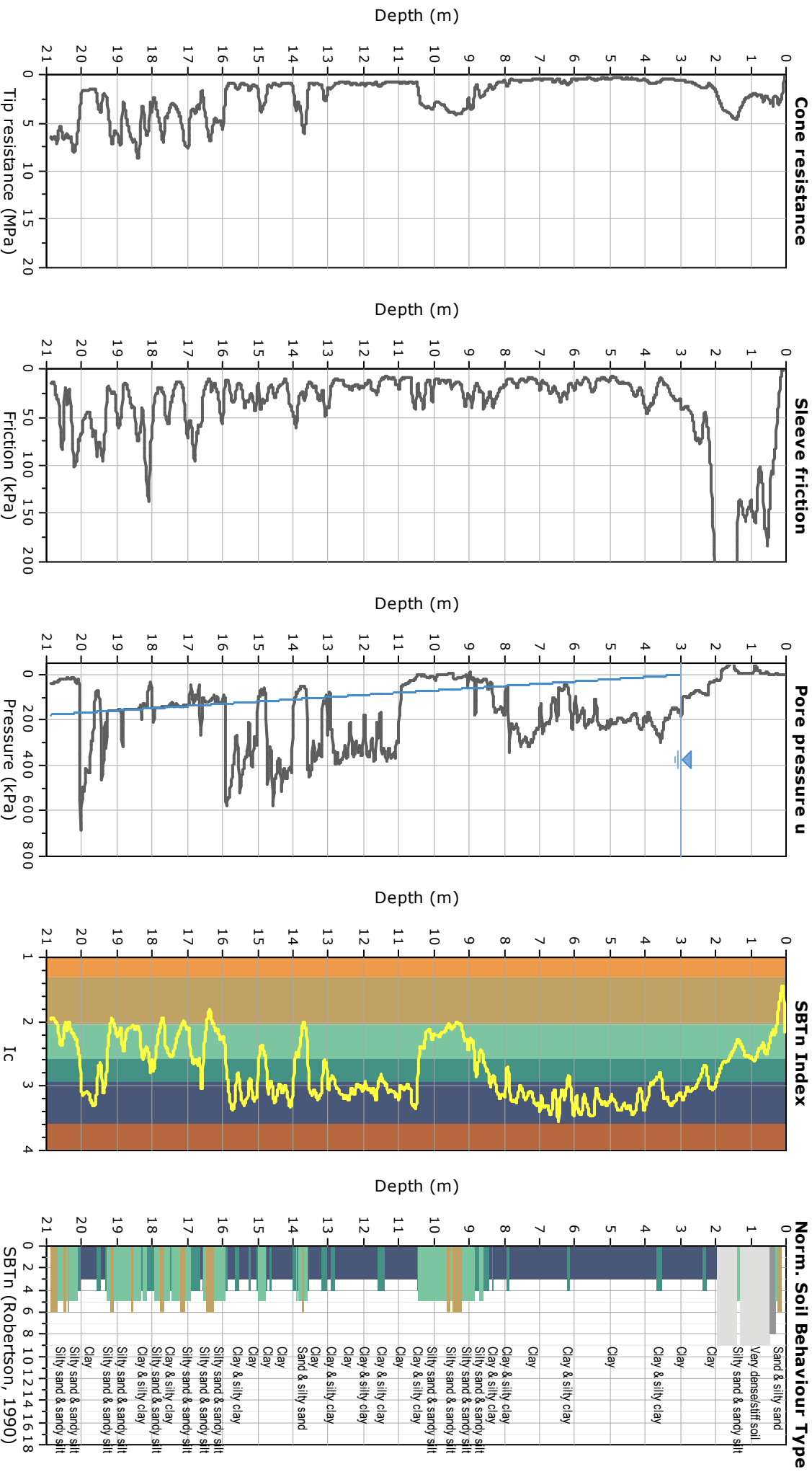
Comune di Bastiglia

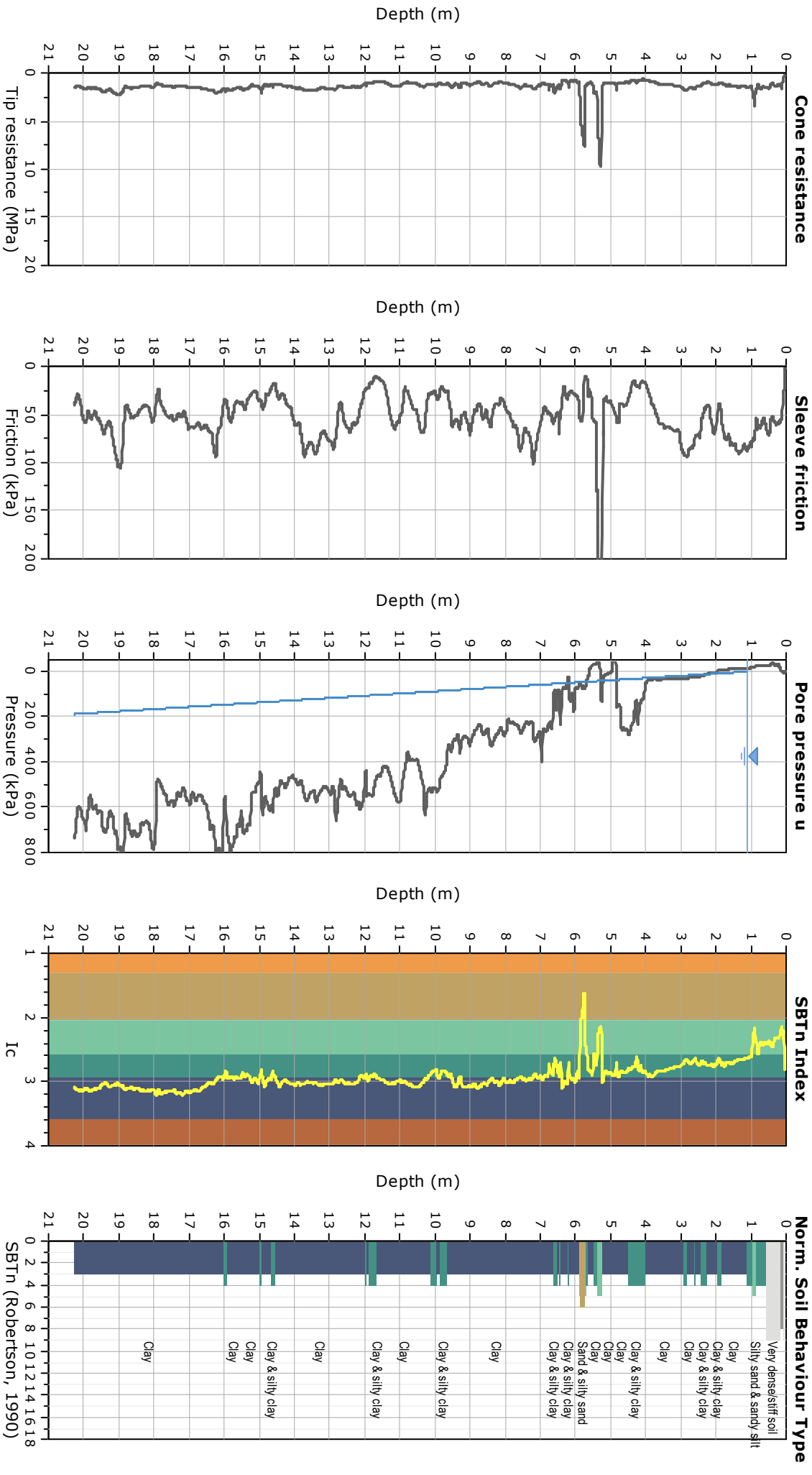


Regione	Soggetto realizzatore	Data
EMILIA–ROMAGNA		
Studio realizzato con il contributo di cui all'OCPDC 780/2021 recepita con DGR 1885/2021	Dott. geologo Samuel Sangiorgi	Luglio 2022



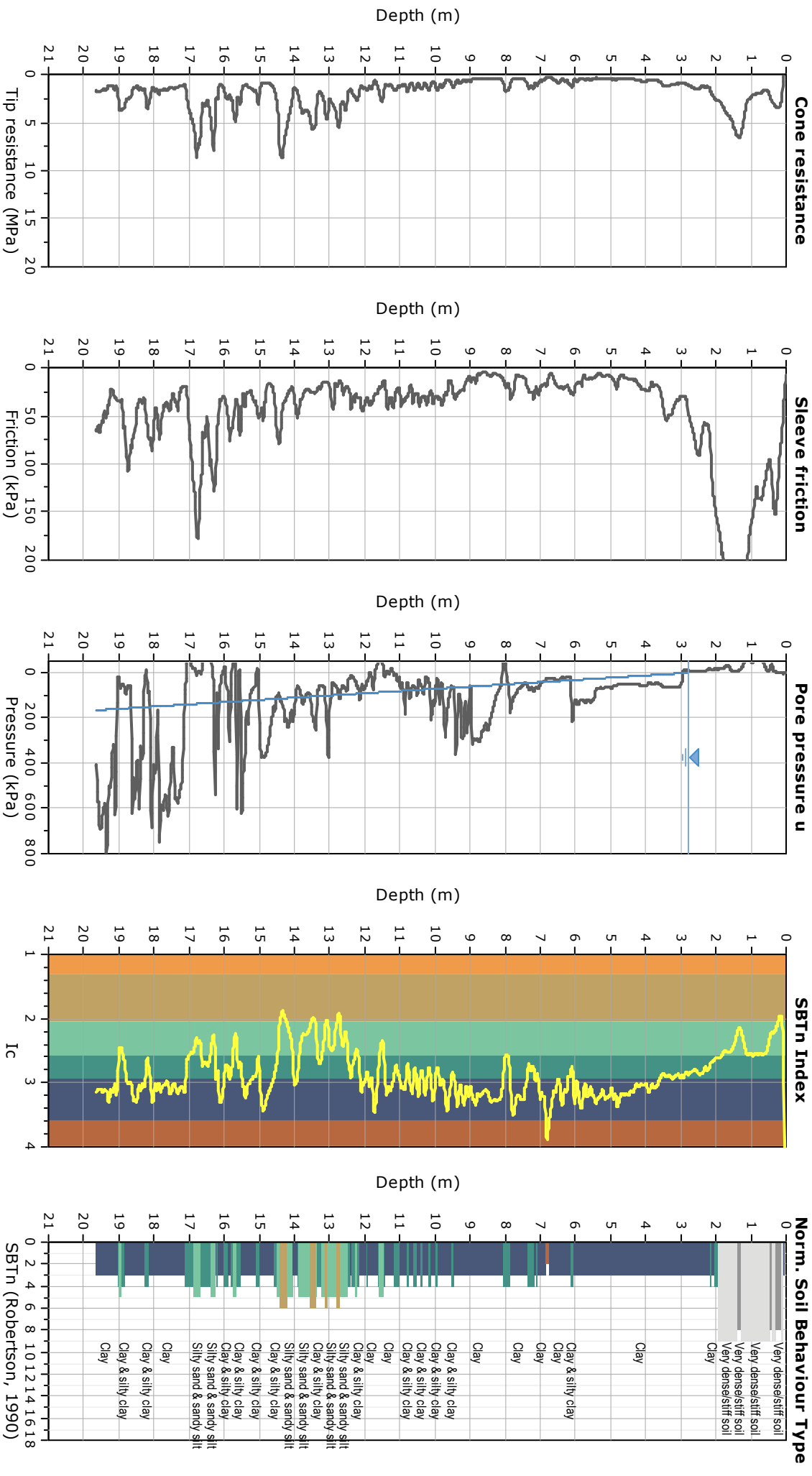


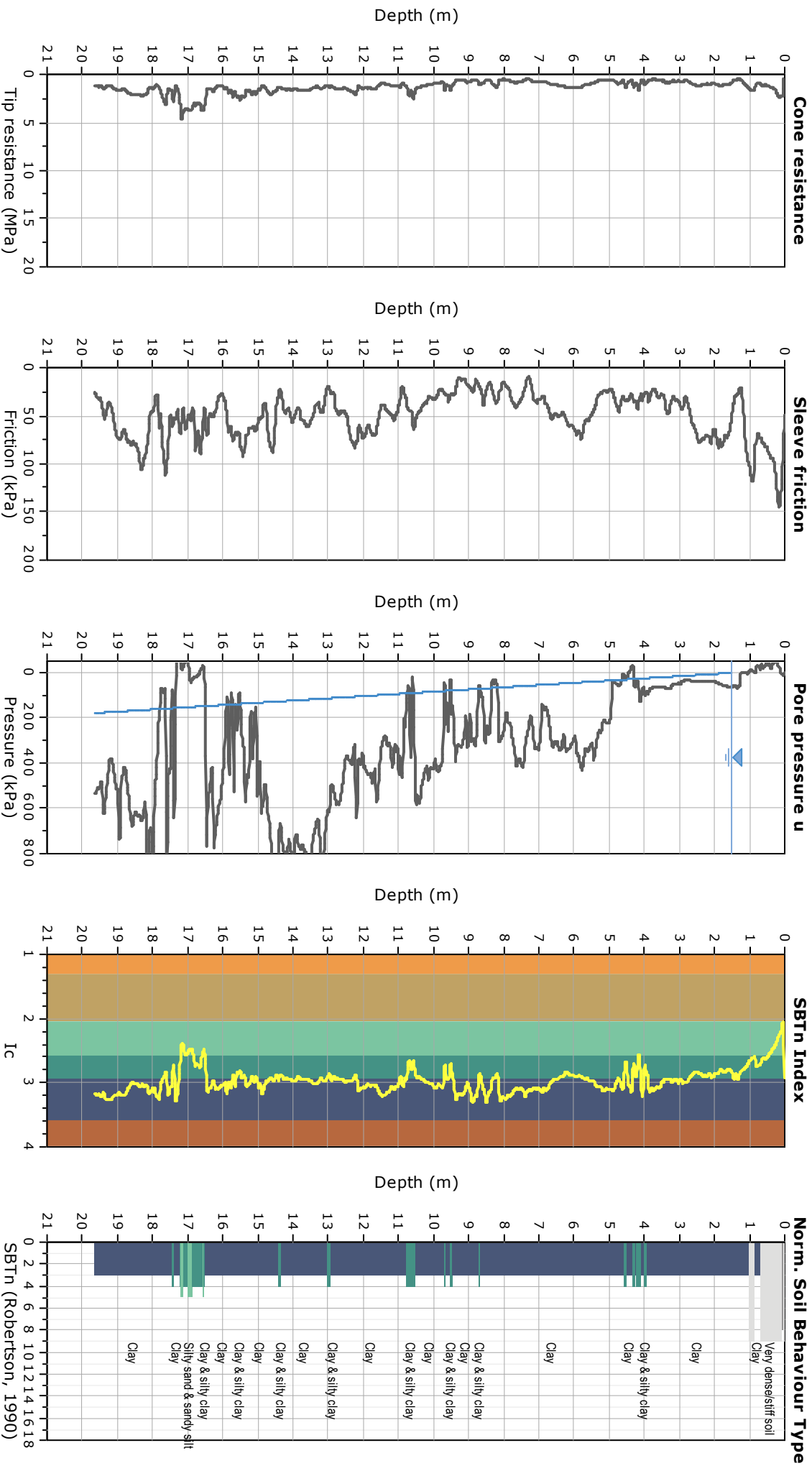


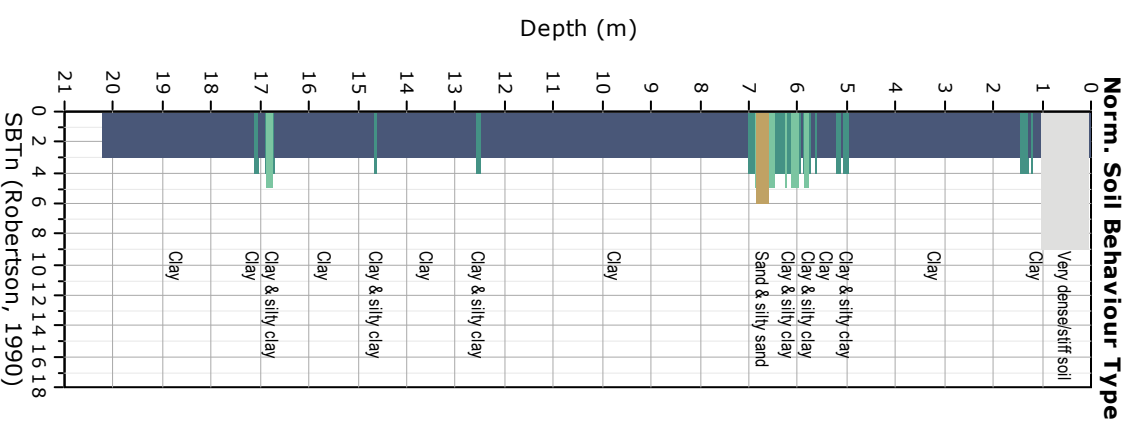
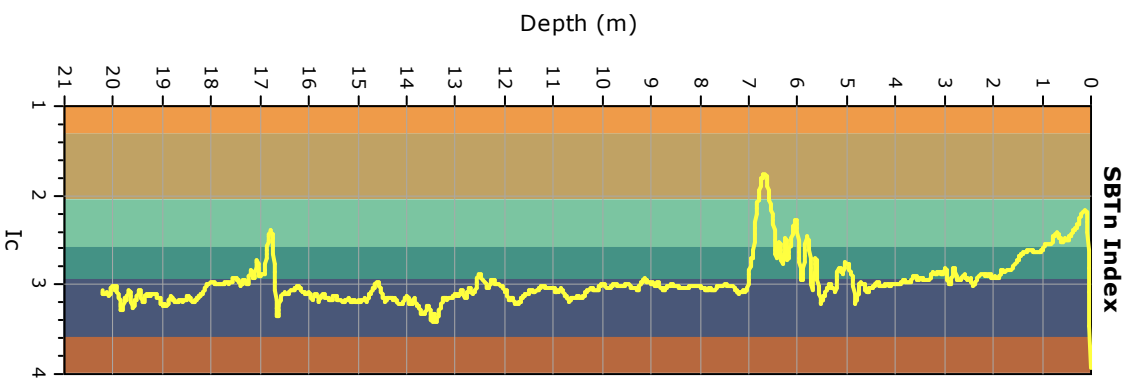
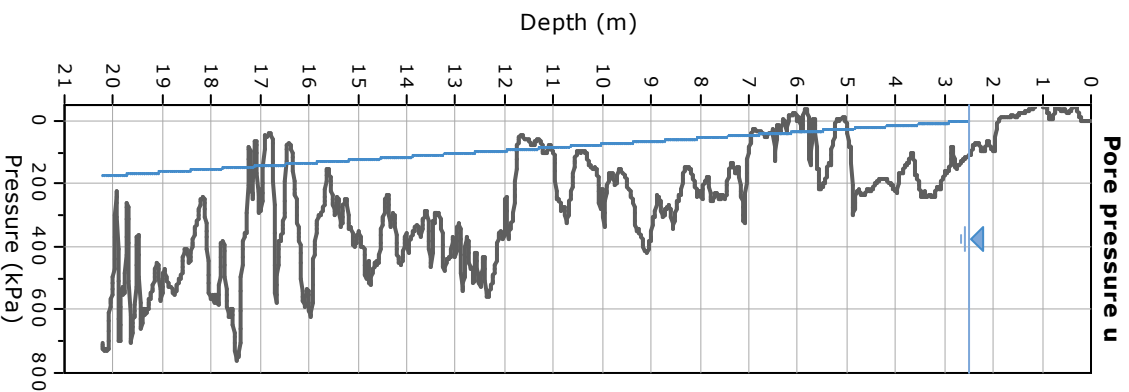
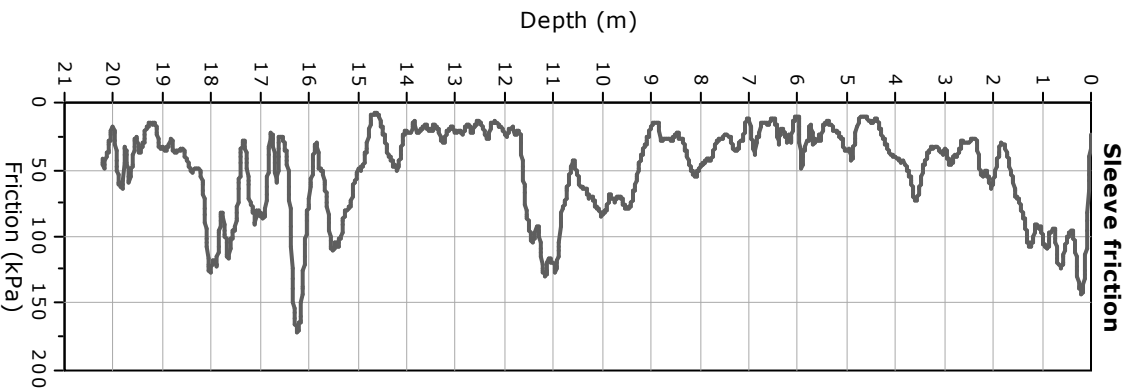
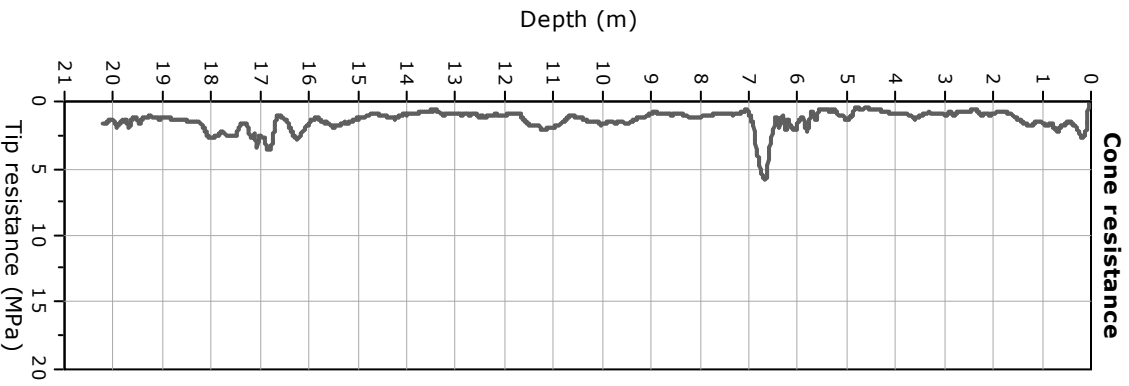


Project: Microzonazione Sismica livello 3
Location: Comune di Bastiglia (MO)

CPT: CPTUS
Total depth: 19.65 m, Date: 16/03/2022

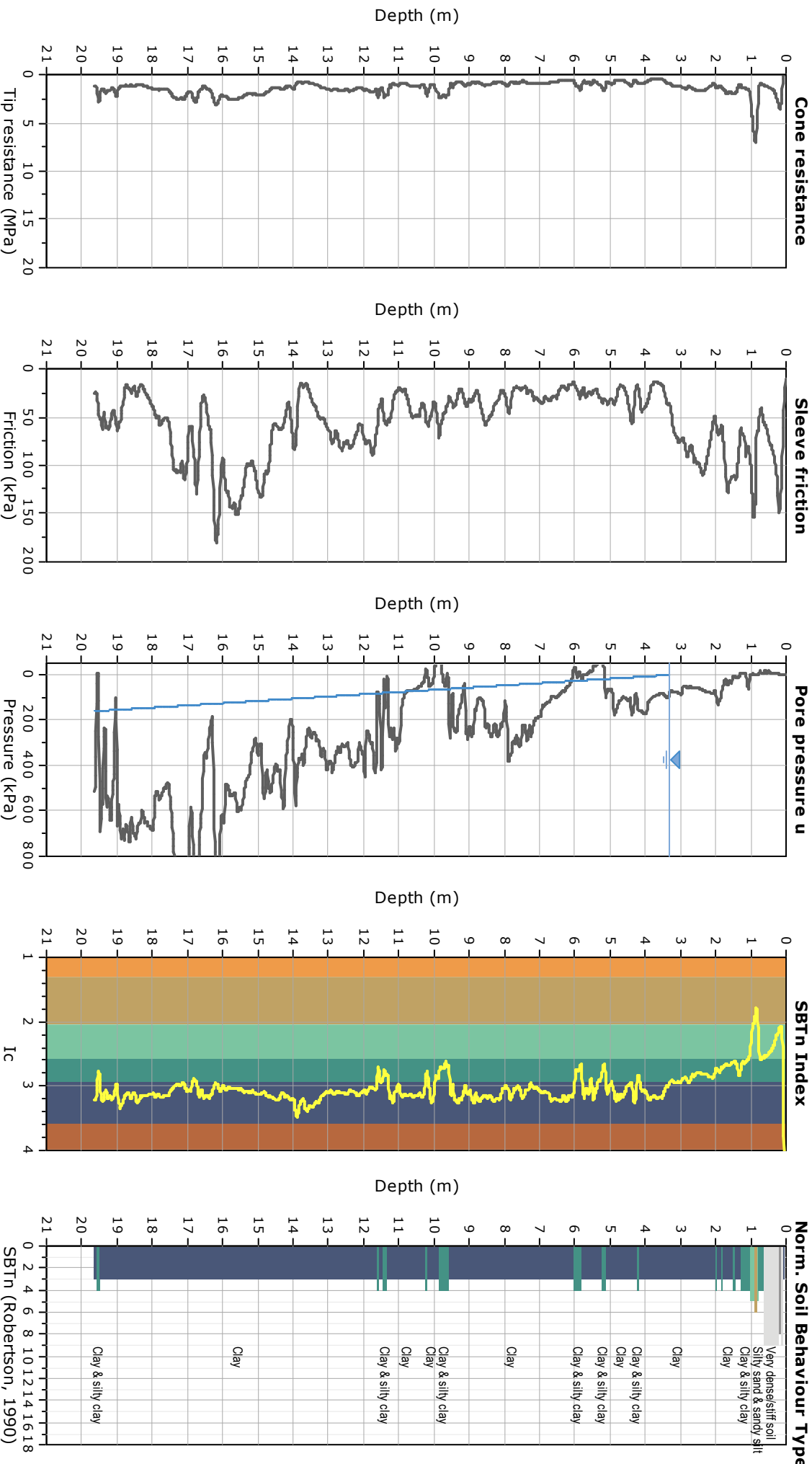


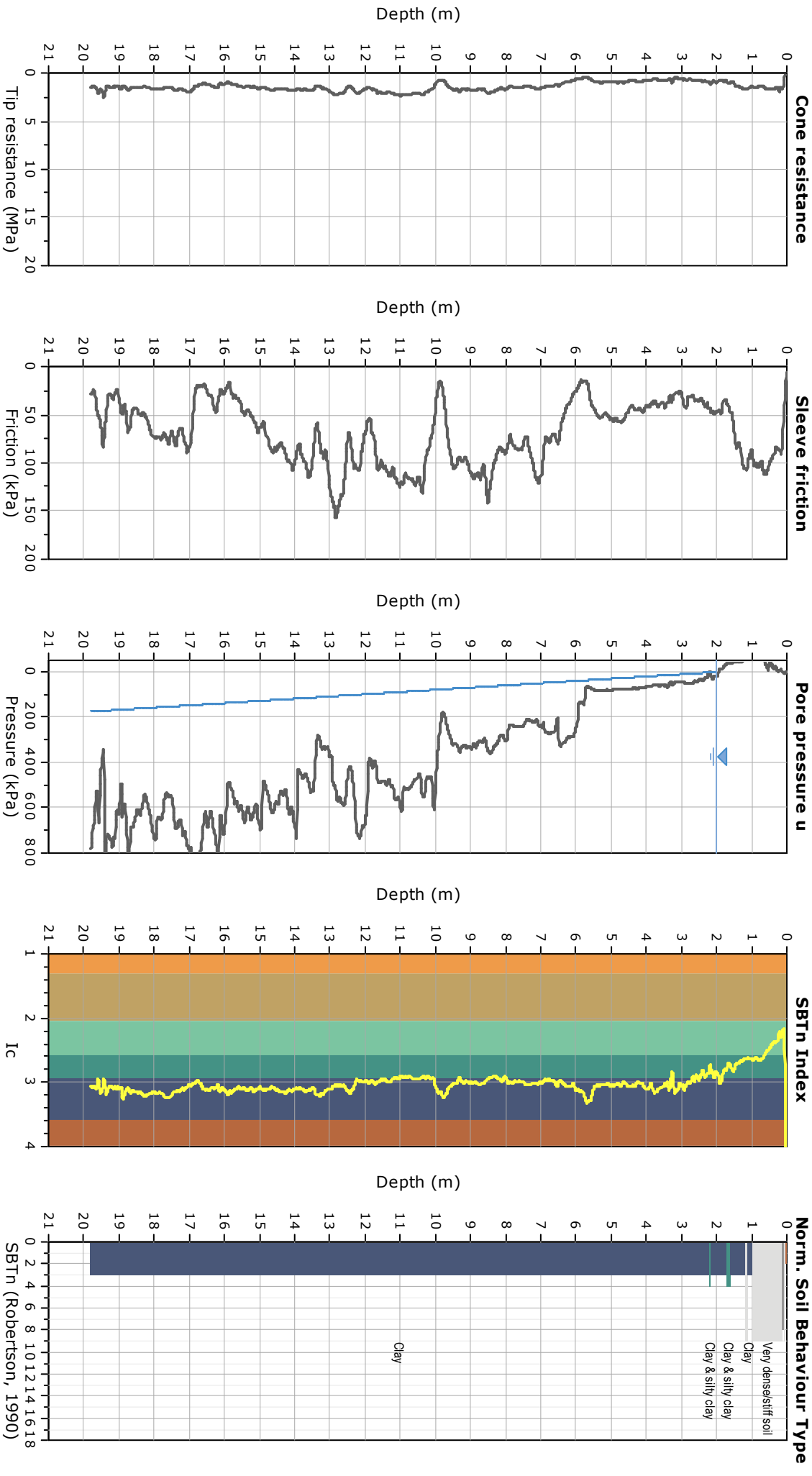


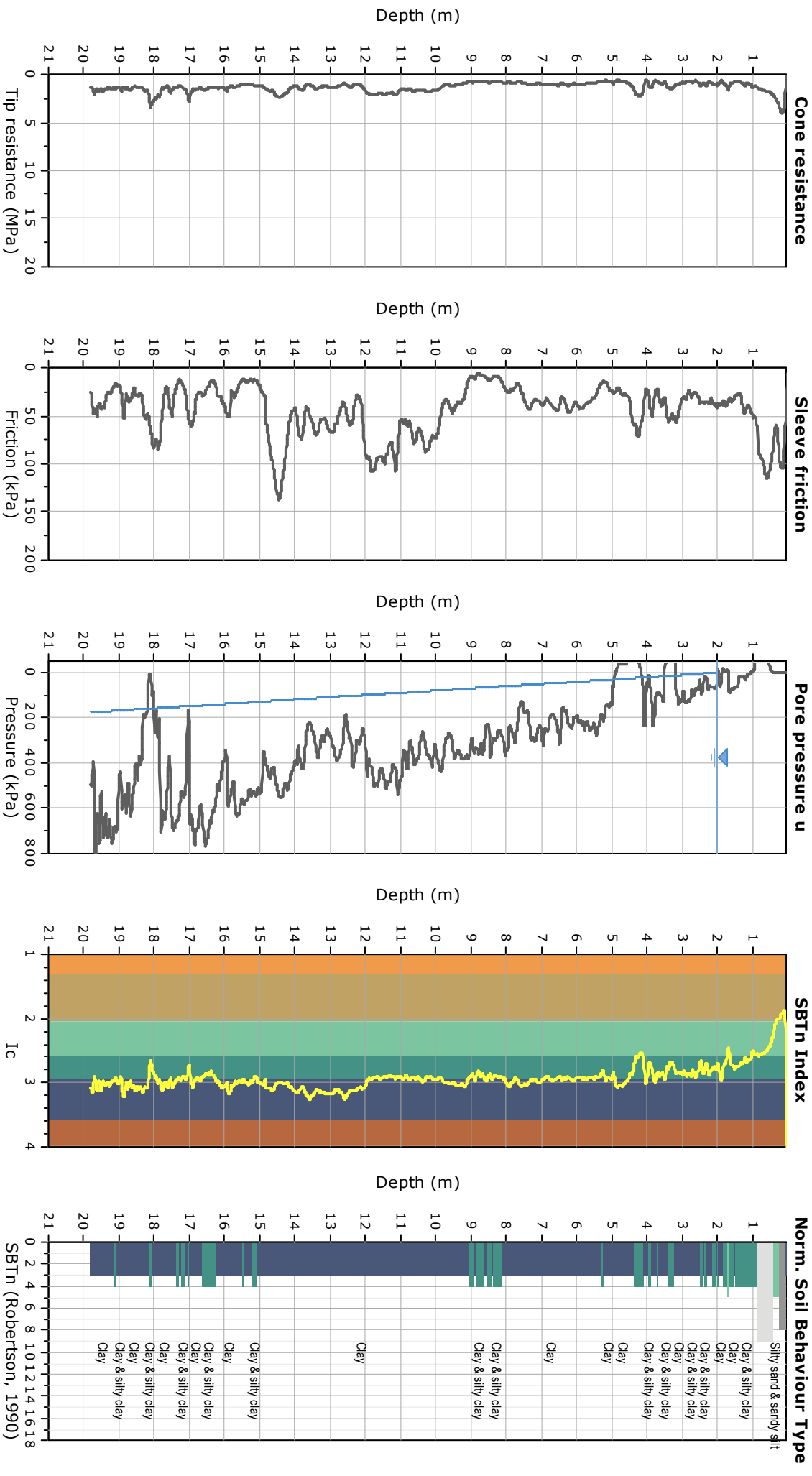


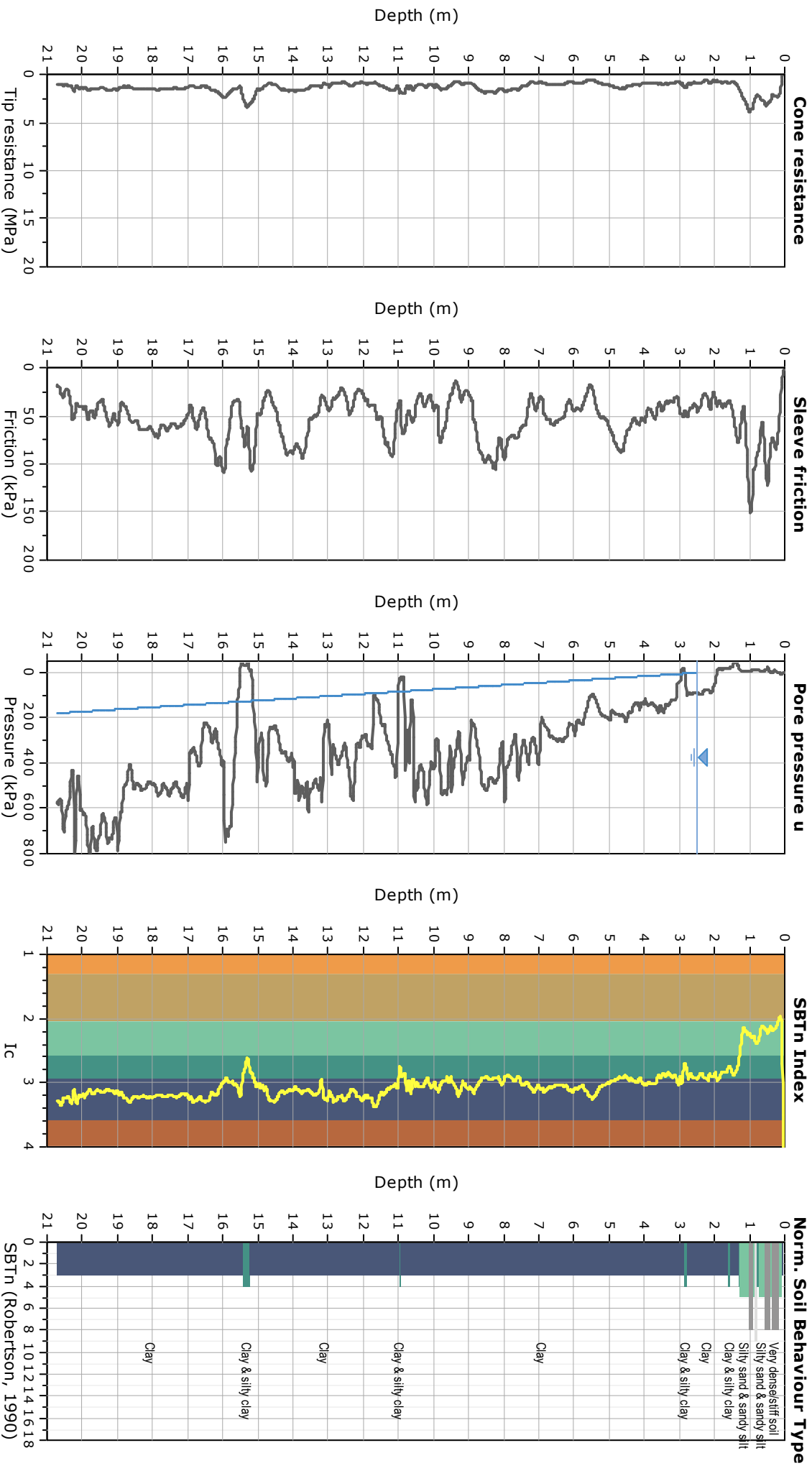
Project: Microzonazione Sismica livello 3
Location: Comune di Bastiglia (MO)

CPT: CPTU8
Total depth: 19.63 m, Date: 16/03/2022





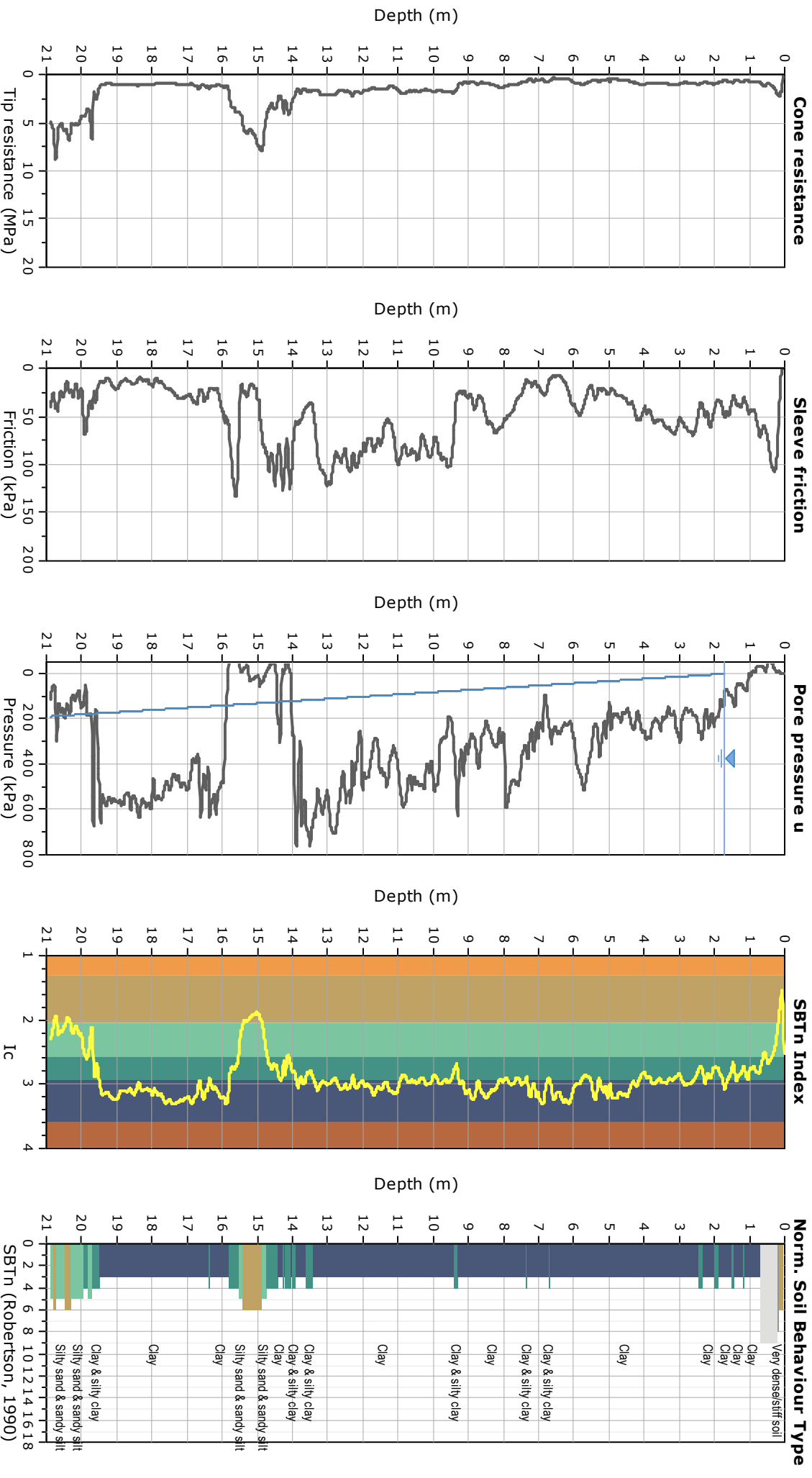


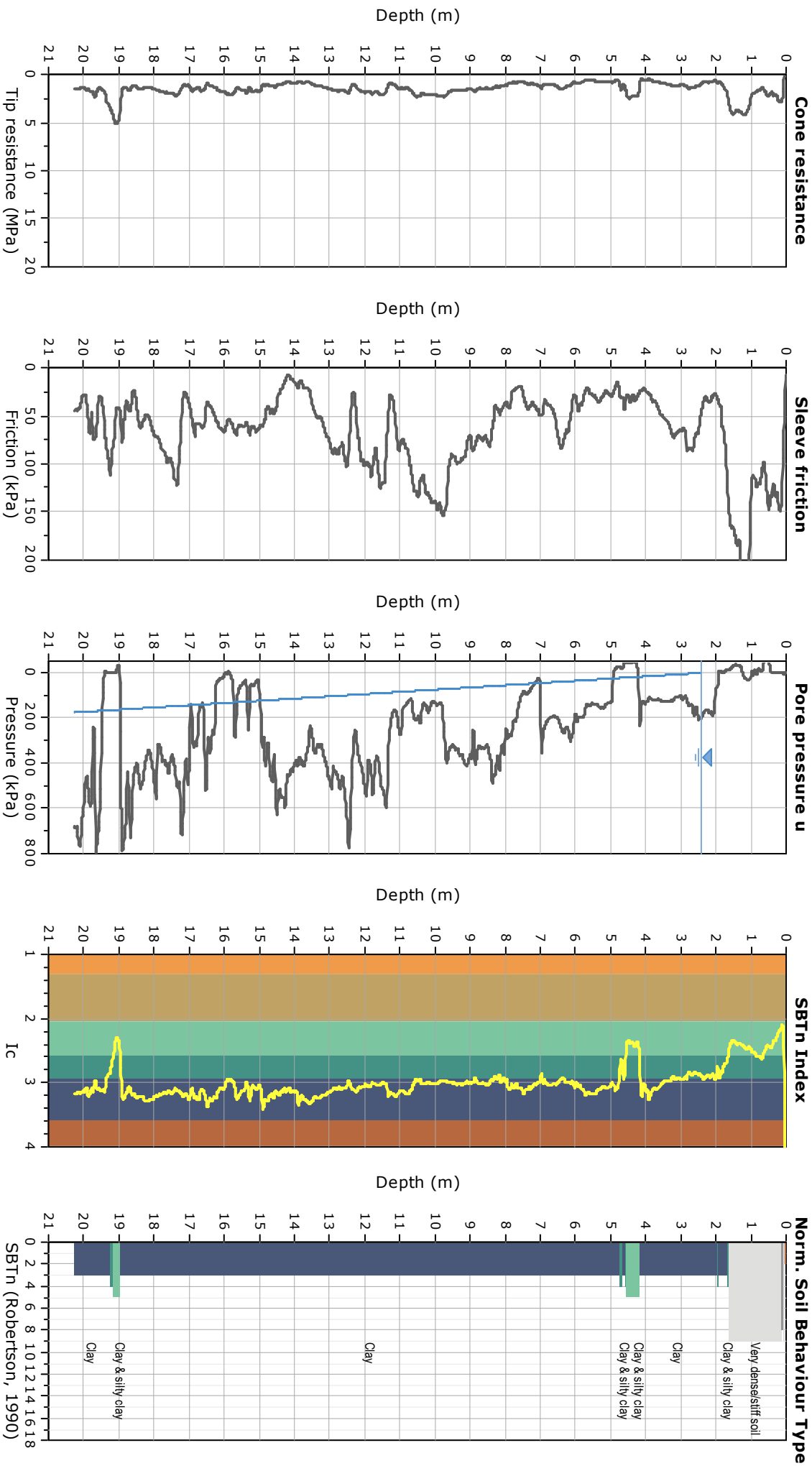


Project: Microzonazione Sismica livello 3

Location: Comune di Bastiglia (MO)

CPT: CPTU12
Total depth: 20.89 m, Date: 22/03/2022



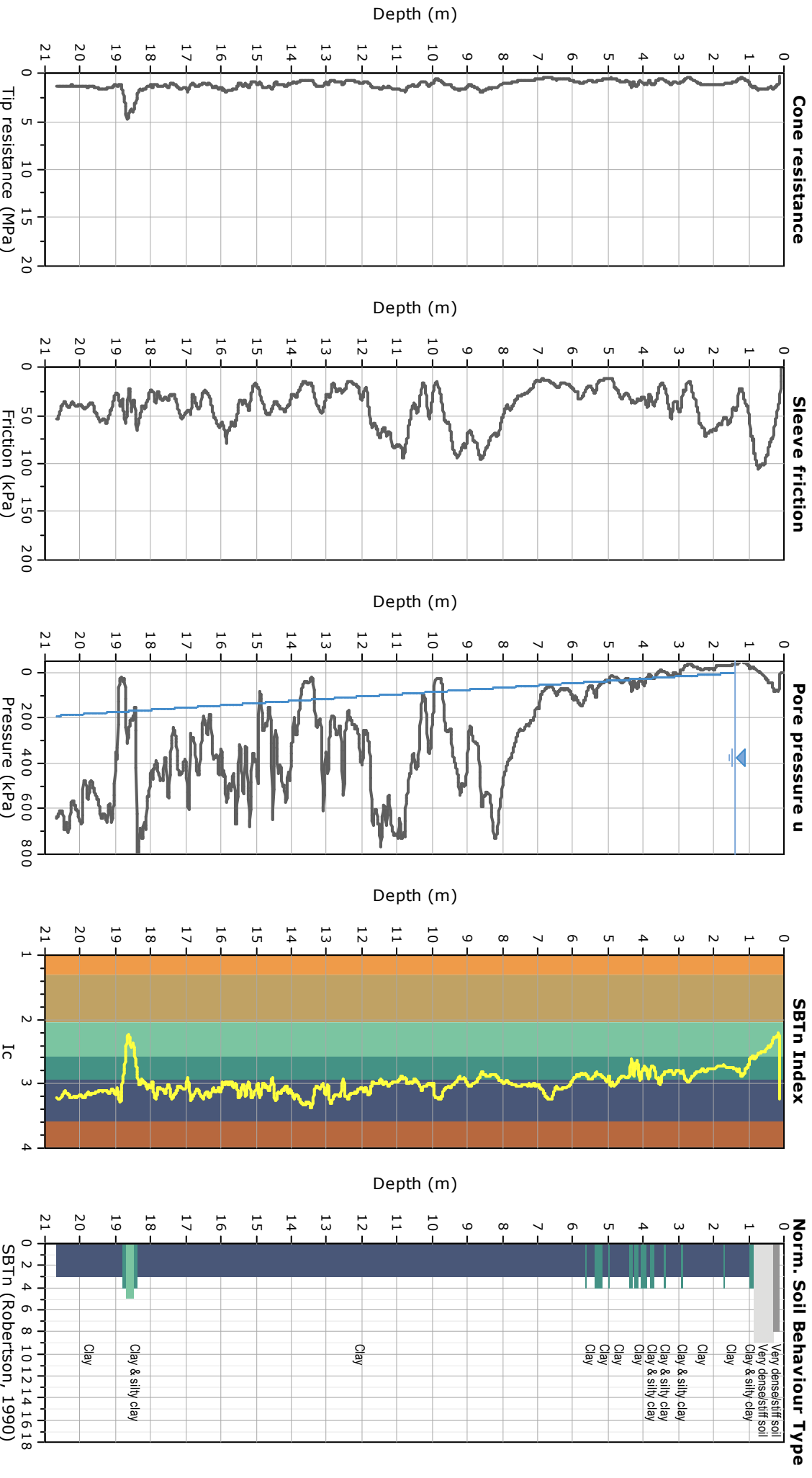


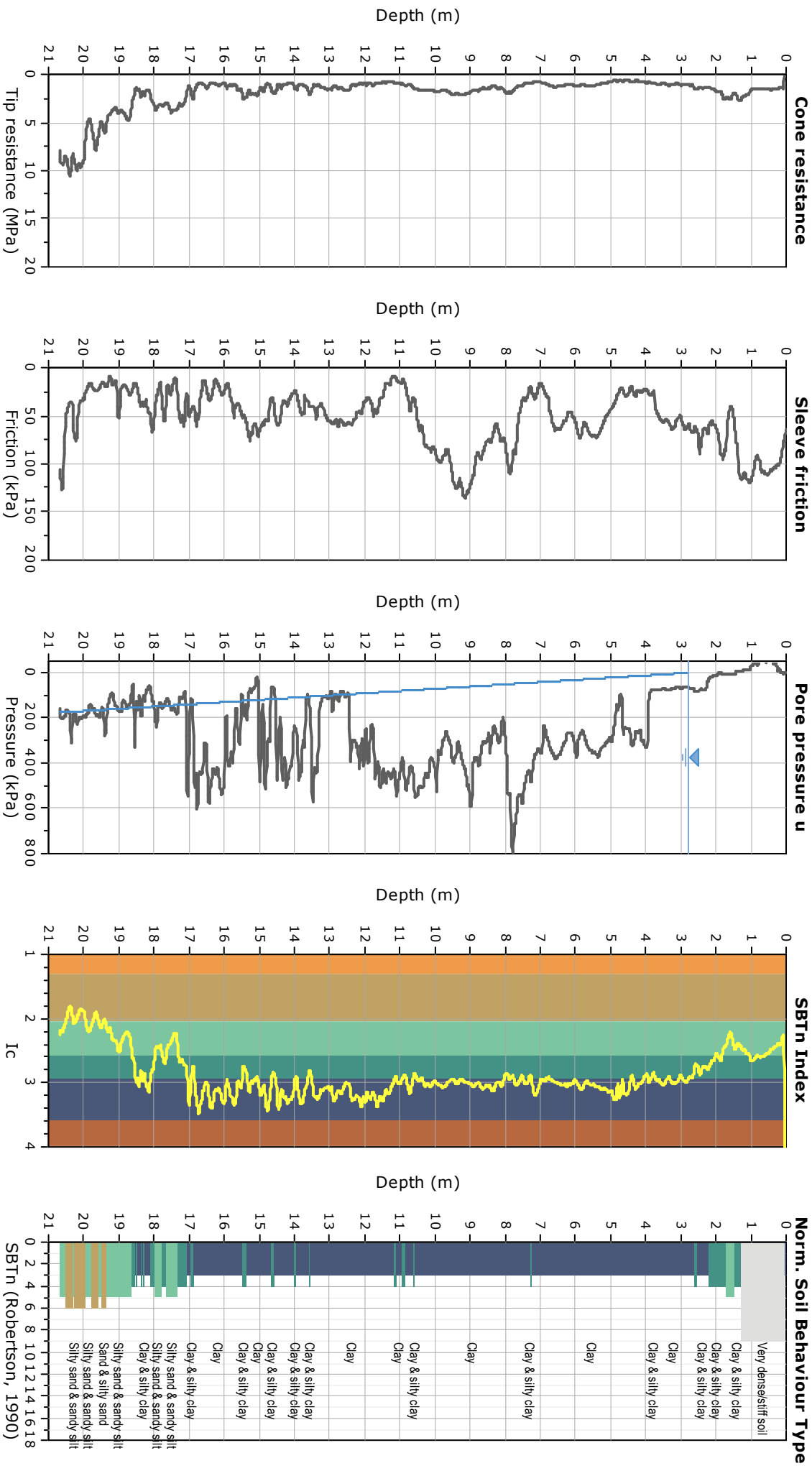
Project: Microzonazione Sismica livello 3

Location: Comune di Bastiglia (MO)

CPT: CPTU14b

Total depth: 20.67 m, Date: 04/03/2022



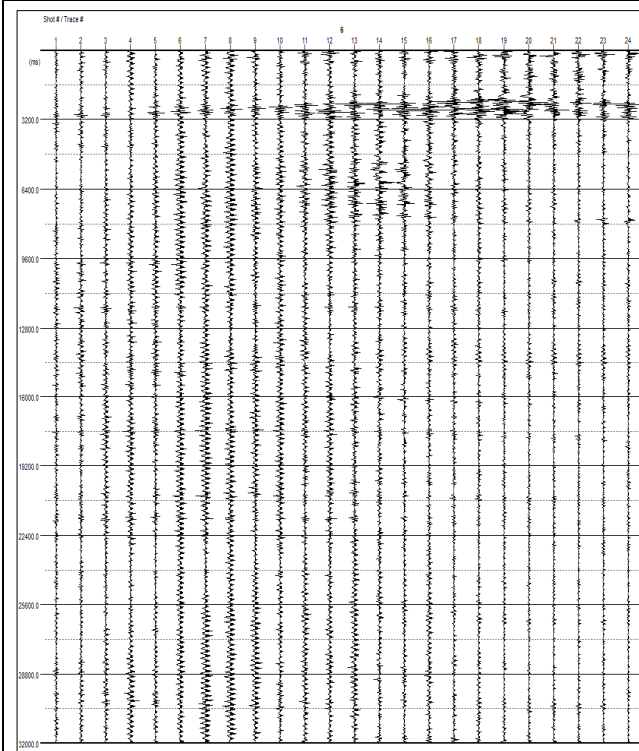


PROSPEZIONE SISMICA CON METODOLOGIA ESAC

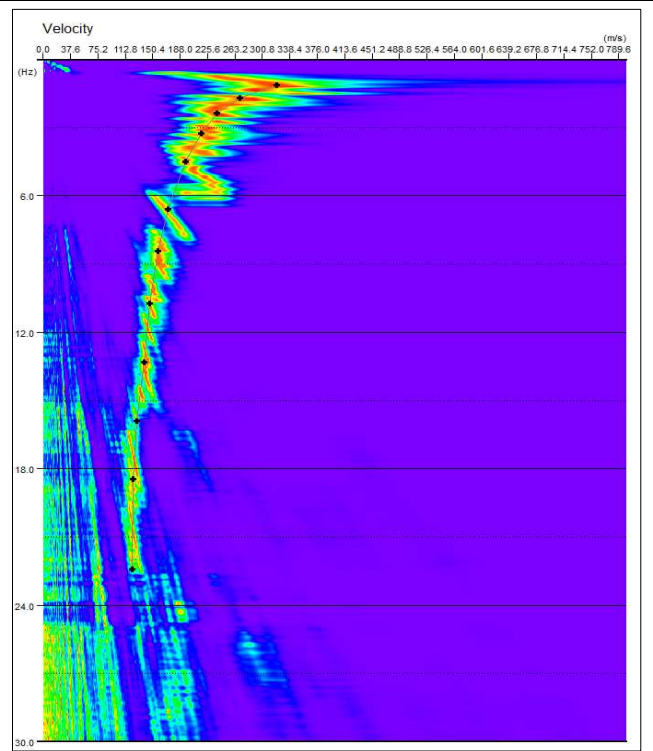
Via Verdi, Comune di Bastiglia (MO) - 036001P73206ESAC_SPAC180

n° tracce	Δt (ms)	T (s)
25	2,0	32,0

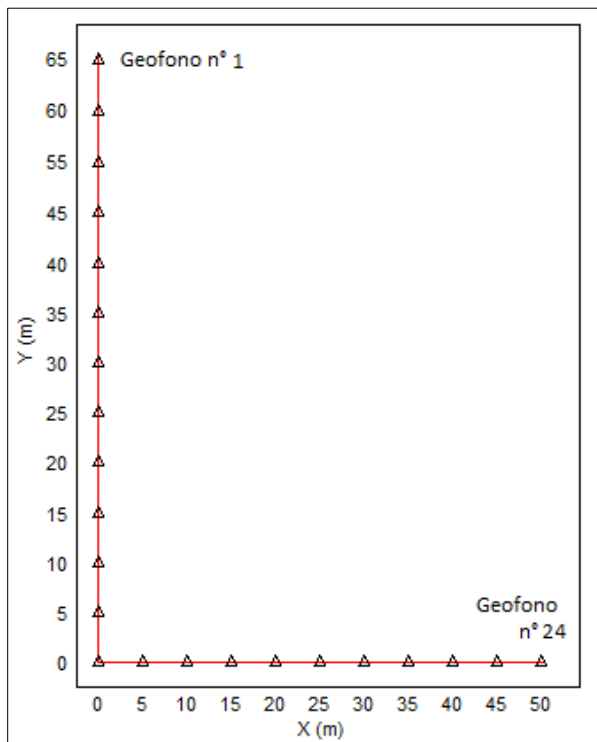
Δt : passo di campionamento; T: durata registrazione.



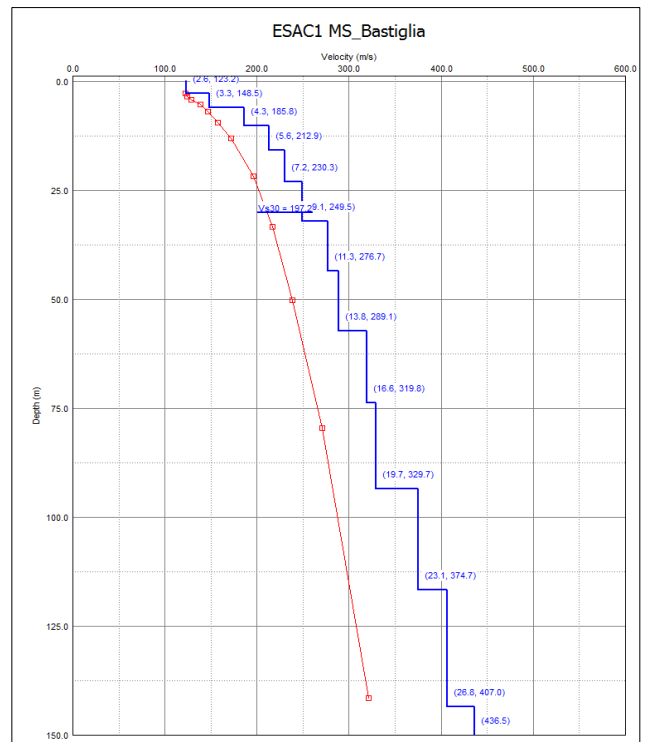
Sismogramma registrato durante le acquisizioni di microtremore sismico. In ascissa il numero dei geofoni, in ordinata il tempo (ms).



Spettro di potenza nel dominio $f-v$ e Picking della curva sperimentale delle onde R (croci nere).



Geometria dello stendimento sismico bidimensionale.



Modello di sottosuolo (1D) descritti in termini di V_s e spessore dei sismostrati (spezzata blu) e curva di dispersione sperimentale delle onde R (curva rossa).

Tabella di sintesi

n. Strato	Profondità letto (m dal p.c.)	Spessore (m)	V _s (m/s)
1	2.6	2.6	123.2
2	5.9	3.3	148.5
3	10.2	4.3	185.8
4	15.8	5.6	212.9
5	23.0	7.2	230.3
6	32.1	9.1	249.5
7	43.4	11.3	276.7
8	57.2	13.8	289.1
9	73.8	16.6	319.8
10	93.5	19.7	329.7
11	116.6	23.1	374.7
12	143.4	26.8	407.0
13	∞	∞	436.5

$$V_{S30} = 197.2 \pm 10\% \text{ [m/s]}$$

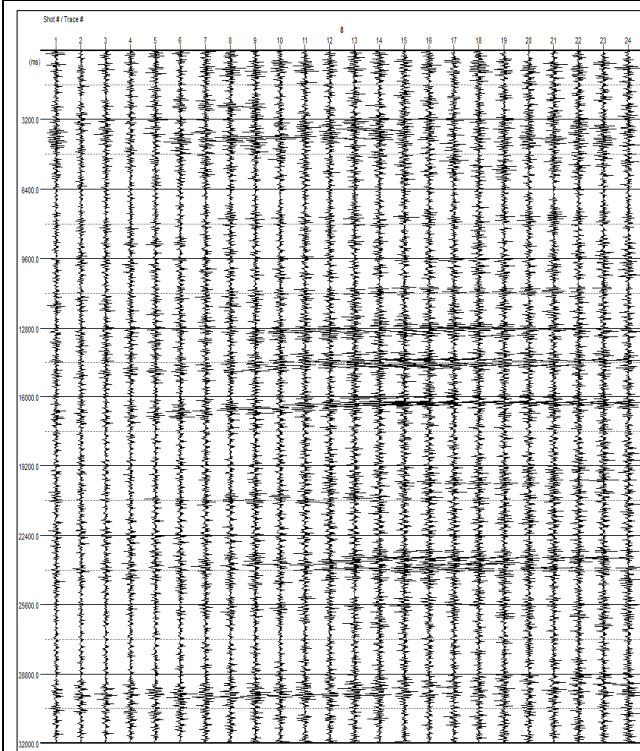
Sintesi dei parametri del modello di sottosuolo ottenuto e Valore di Vs30 calcolato.

PROSPEZIONE SISMICA CON METODOLOGIA ESAC

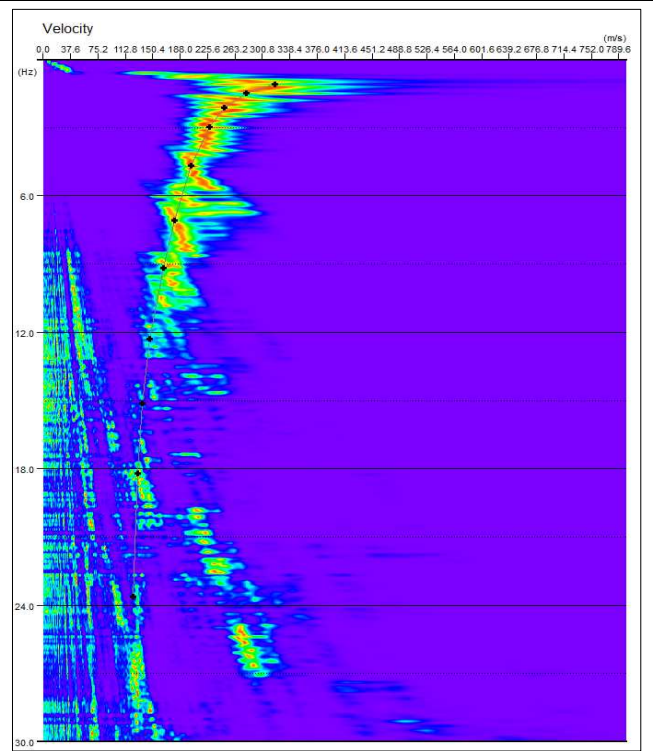
Piazza Tintori, Comune di Bastiglia (MO) - 036001P73207ESAC_SPAC181

n° tracce	Δt (ms)	T (s)
25	2,0	32,0

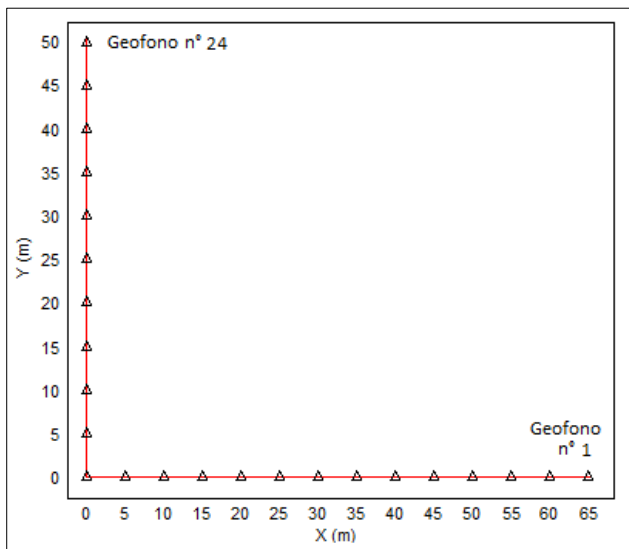
Δt : passo di campionamento; T: durata registrazione.



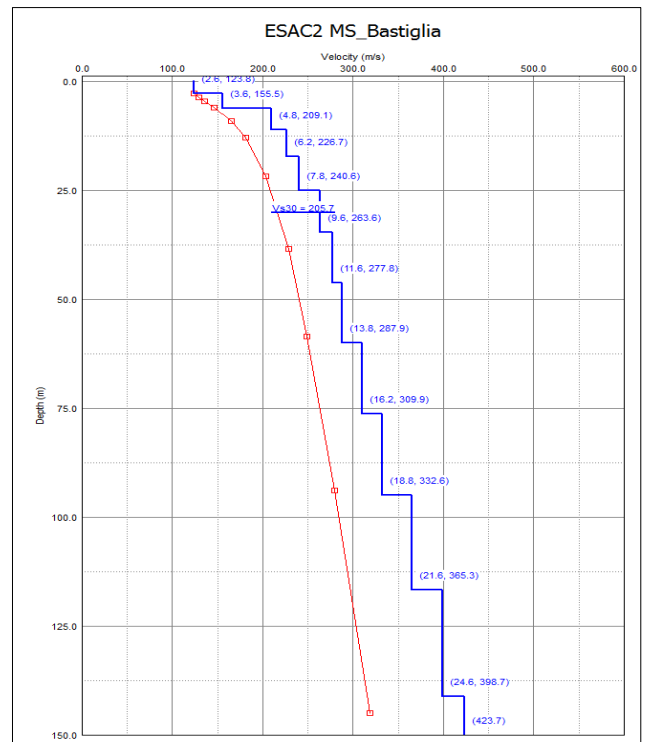
Sismogramma registrato durante le acquisizioni di microtremore sismico. In ascissa il numero dei geofoni, in ordinata il tempo (ms).



Spettro di potenza nel dominio $f-v$ e Picking della curva sperimentale delle onde R (croci nere).



Geometria dello stendimento sismico bidimensionale.



Modello di sottosuolo (1D) descritti in termini di V_s e spessore dei sismostrati (spezzata blu) e curva di dispersione sperimentale delle onde R (curva rossa).

Tabella di sintesi

n. Strato	Profondità letto (m dal p.c.)	Spessore (m)	V _s (m/s)
1	2.6	2.6	123.8
2	6.2	3.6	155.5
3	11.0	4.8	209.1
4	17.2	6.2	226.7
5	25.0	7.8	240.6
6	34.6	9.6	263.6
7	46.2	11.6	277.8
8	60.0	13.8	287.9
9	76.2	16.2	309.9
10	95.0	18.8	332.6
11	116.6	21.6	365.3
12	141.2	24.6	398.7
13	∞	∞	423.7

$$V_{S30} = 205.7 \pm 10\% \text{ [m/s]}$$

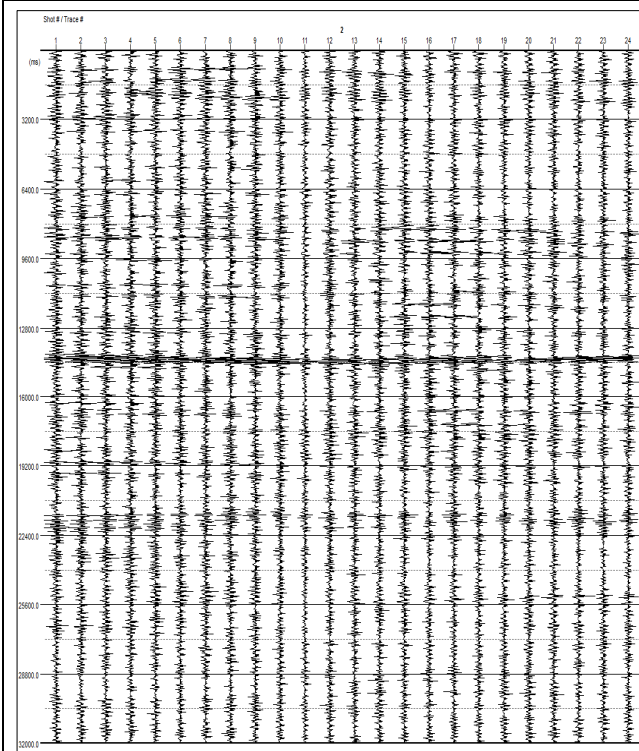
Sintesi dei parametri del modello di sottosuolo ottenuto e Valore di Vs30 calcolato.

PROSPEZIONE SISMICA CON METODOLOGIA ESAC

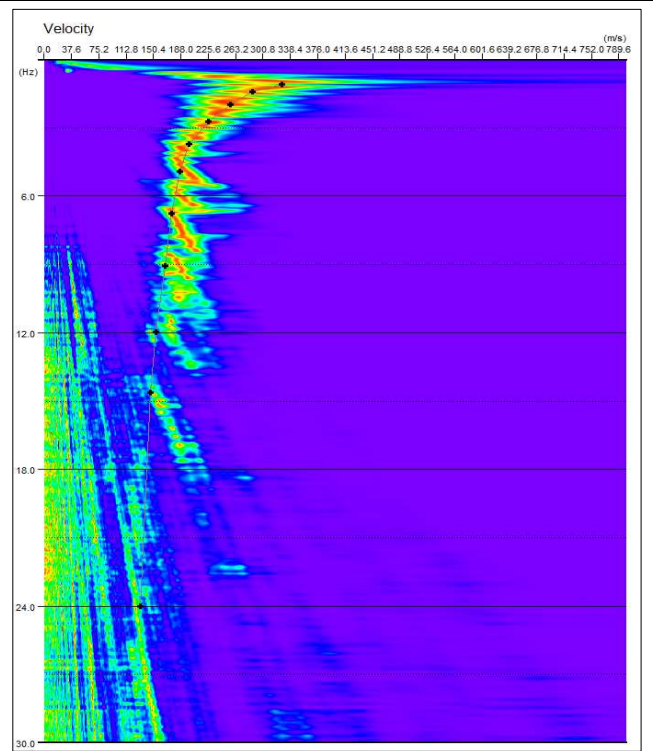
Via Marzabotto, Comune di Bastiglia (MO) - 036001P73208ESAC_SPAC182

n° tracce	Δt (ms)	T (s)
25	2,0	32,0

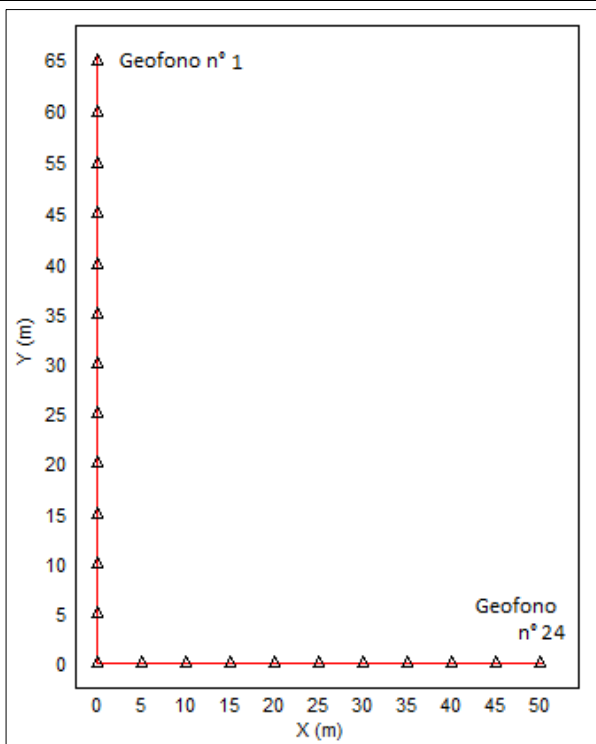
Δt : passo di campionamento; T: durata registrazione.



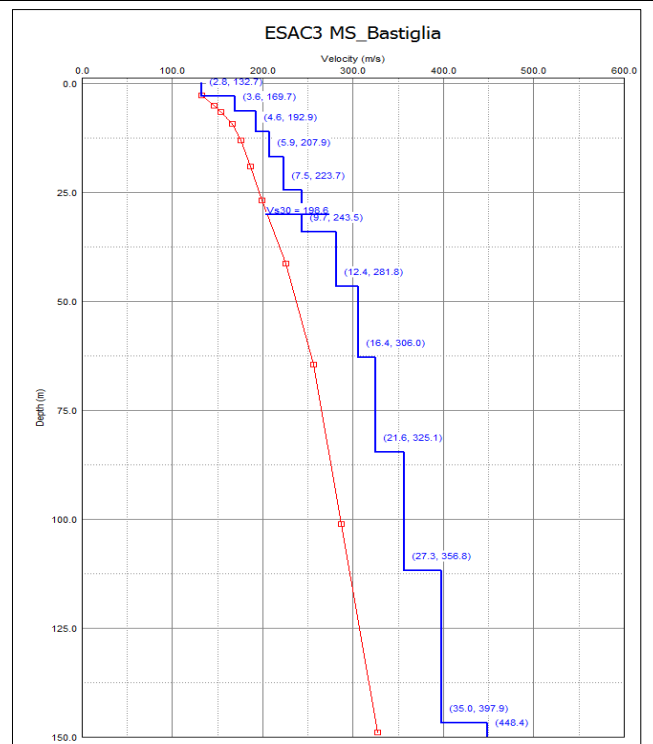
Sismogramma registrato durante le acquisizioni di microtremore sismico. In ascissa il numero dei geofoni, in ordinata il tempo (ms).



Spettro di potenza nel dominio $f-v$ e Picking della curva sperimentali delle onde R (croci nere).



Geometria dello stendimento sismico bidimensionale.



Modello di sottosuolo (1D) descritti in termini di V_s e spessore dei sismostrati (spezzata blu) e curva di dispersione sperimentale delle onde R (curva rossa).

Tabella di sintesi

n. Strato	Profondità letto (m dal p.c.)	Spessore (m)	V _s (m/s)
1	2.8	2.8	132.7
2	6.4	3.6	169.7
3	11.0	4.6	192.9
4	16.9	5.9	207.9
5	24.4	7.5	223.7
6	34.1	9.7	243.5
7	46.5	12.4	281.8
8	62.9	16.4	306.0
9	84.5	21.6	325.1
10	111.8	27.3	356.8
11	146.8	35.0	397.9
12	∞	∞	448.4

$$V_{s30} = 198.6 \pm 10\% \text{ [m/s]}$$

Sintesi dei parametri del modello di sottosuolo ottenuto e Valore di Vs30 calcolato.

BASTIGLIA_MS, TR1

036001P73209HVSR183

Instrument: TRZ-0108/01-10

Start recording: 10/03/02 11:41:50 End recording: 10/03/02 12:41:50

Channel labels: NORTH SOUTH; EAST WEST ; UP DOWN

Trace length: 1h00'00". Analyzed 80% trace (manual window selection)

Sampling rate: 128 Hz

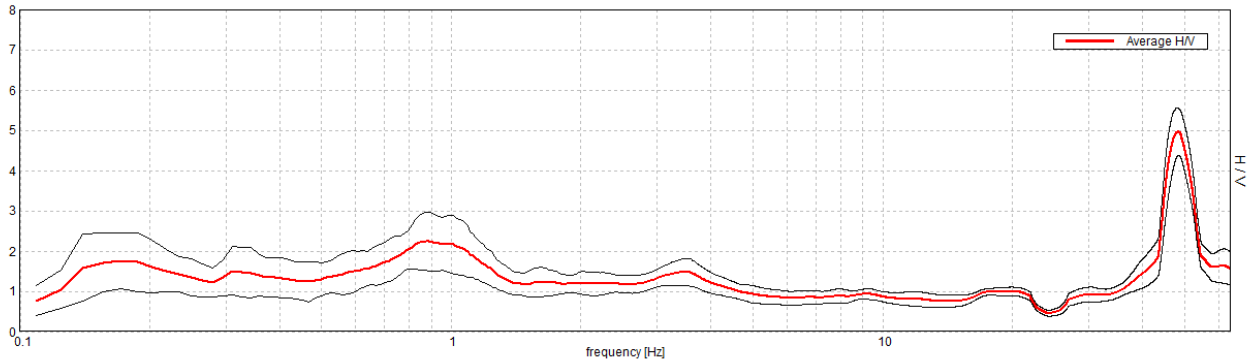
Window size: 60 s

Smoothing type: Triangular window

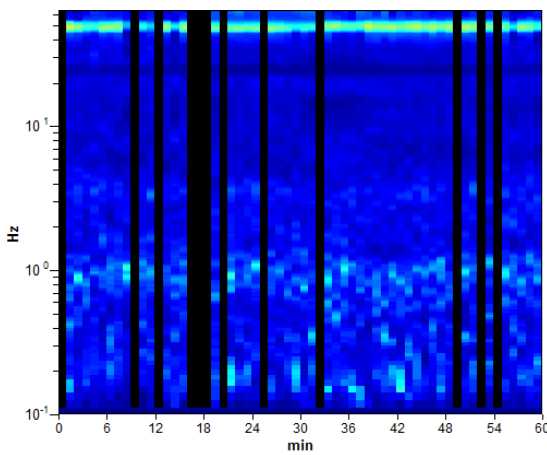
Smoothing: 10%

HORIZONTAL TO VERTICAL SPECTRAL RATIO

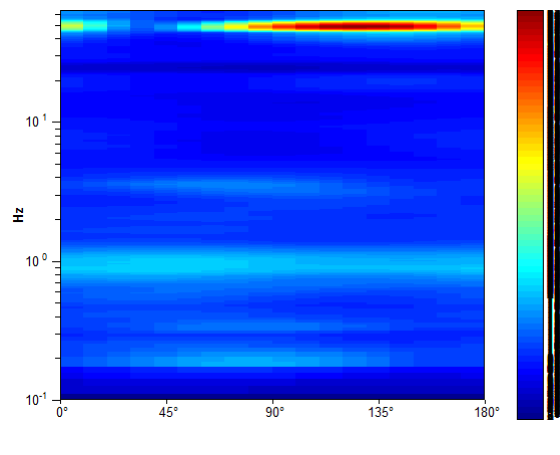
Max. H/V at 0.89 ± 0.03 Hz (in the range 0.1 - 20.0 Hz).



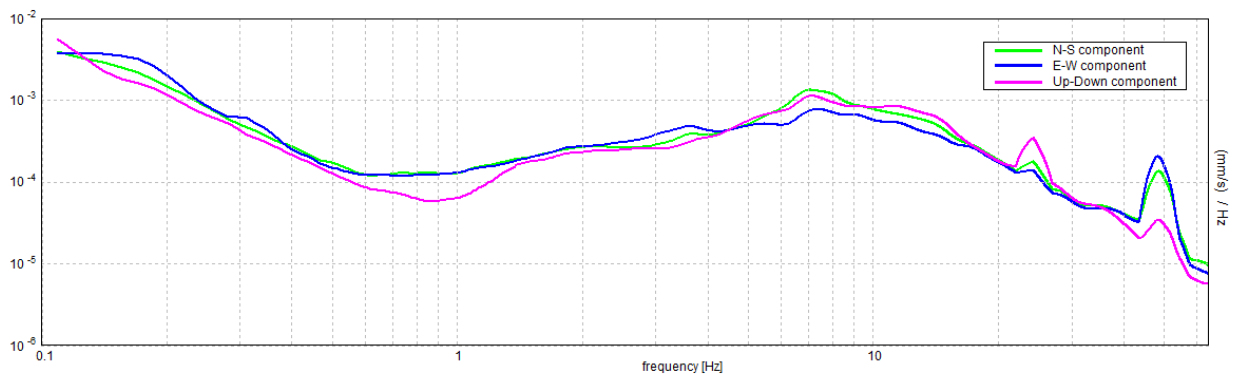
H/V TIME HISTORY



DIRECTIONAL H/V



SINGLE COMPONENT SPECTRA



[According to the SESAME, 2005 guidelines. Please read carefully the *Grilla* manual before interpreting the following tables.]

Max. H/V at 0.89 ± 0.03 Hz (in the range 0.1 - 20.0 Hz).

Criteria for a reliable H/V curve

[All 3 should be fulfilled]

$f_0 > 10 / L_w$	$0.89 > 0.17$	OK	
$n_c(f_0) > 200$	$2565.0 > 200$	OK	
$\sigma_A(f) < 2$ for $0.5f_0 < f < 2f_0$ if $f_0 > 0.5\text{Hz}$ $\sigma_A(f) < 3$ for $0.5f_0 < f < 2f_0$ if $f_0 < 0.5\text{Hz}$	Exceeded 0 out of 86 times	OK	

Criteria for a clear H/V peak

[At least 5 out of 6 should be fulfilled]

Exists f^- in $[f_0/4, f_0]$ $A_{H/V}(f^-) < A_0 / 2$			NO
Exists f^+ in $[f_0, 4f_0]$ $A_{H/V}(f^+) < A_0 / 2$			NO
$A_0 > 2$	$2.24 > 2$	OK	
$f_{\text{peak}}[A_{H/V}(f) \pm \sigma_A(f)] = f_0 \pm 5\%$	$ 0.01764 < 0.05$	OK	
$\sigma_f < \varepsilon(f_0)$	$0.01571 < 0.13359$	OK	
$\sigma_A(f_0) < \theta(f_0)$	$0.3586 < 2.0$	OK	

L_w	window length
n_w	number of windows used in the analysis
$n_c = L_w n_w f_0$	number of significant cycles
f	current frequency
f_0	H/V peak frequency
σ_f	standard deviation of H/V peak frequency
$\varepsilon(f_0)$	threshold value for the stability condition $\sigma_f < \varepsilon(f_0)$
A_0	H/V peak amplitude at frequency f_0
$A_{H/V}(f)$	H/V curve amplitude at frequency f
f^-	frequency between $f_0/4$ and f_0 for which $A_{H/V}(f^-) < A_0/2$
f^+	frequency between f_0 and $4f_0$ for which $A_{H/V}(f^+) < A_0/2$
$\sigma_A(f)$	standard deviation of $A_{H/V}(f)$, $\sigma_A(f)$ is the factor by which the mean $A_{H/V}(f)$ curve should be multiplied or divided
$\sigma_{\log H/V}(f)$	standard deviation of $\log A_{H/V}(f)$ curve
$\theta(f_0)$	threshold value for the stability condition $\sigma_A(f) < \theta(f_0)$

Threshold values for σ_f and $\sigma_A(f_0)$

Freq. range [Hz]	< 0.2	0.2 – 0.5	0.5 – 1.0	1.0 – 2.0	> 2.0
$\varepsilon(f_0)$ [Hz]	$0.25 f_0$	$0.2 f_0$	$0.15 f_0$	$0.10 f_0$	$0.05 f_0$
$\theta(f_0)$ for $\sigma_A(f_0)$	3.0	2.5	2.0	1.78	1.58
$\log \theta(f_0)$ for $\sigma_{\log H/V}(f_0)$	0.48	0.40	0.30	0.25	0.20

BASTIGLIA_MS, TR2

036001P73210HVSR184

Instrument: TRZ-0108/01-10

Start recording: 04/03/02 13:57:58 End recording: 04/03/02 14:17:59

Channel labels: NORTH SOUTH; EAST WEST ; UP DOWN

Trace length: 0h20'00". Analyzed 77% trace (manual window selection)

Sampling rate: 128 Hz

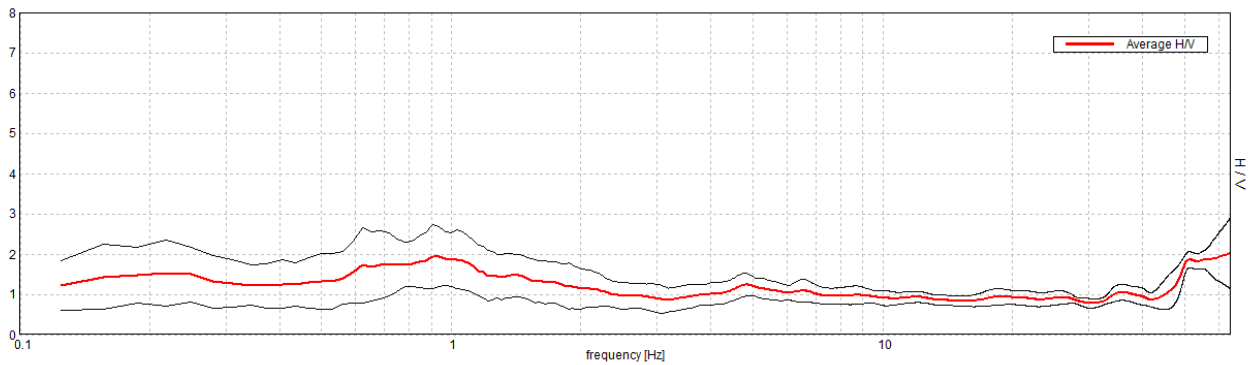
Window size: 20 s

Smoothing type: Triangular window

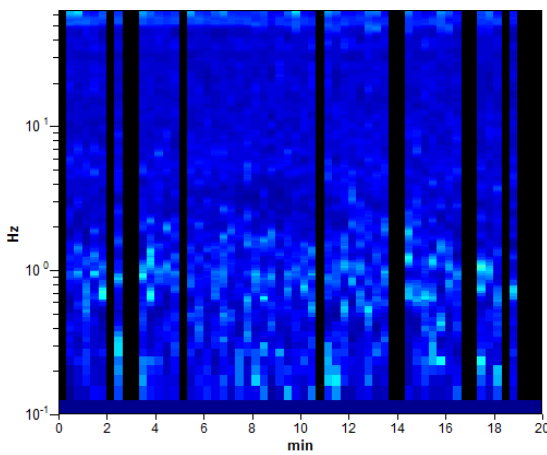
Smoothing: 10%

HORIZONTAL TO VERTICAL SPECTRAL RATIO

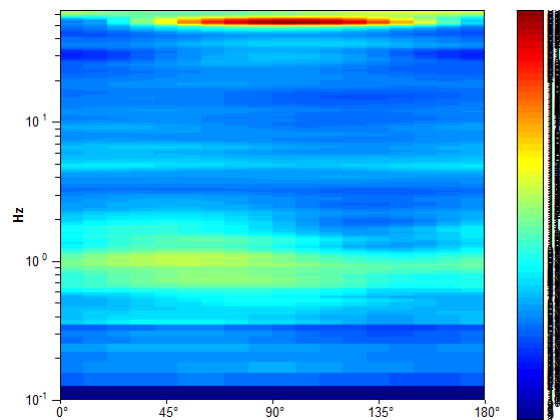
Max. H/V at 0.91 ± 0.0 Hz (in the range 0.1 - 20.0 Hz).



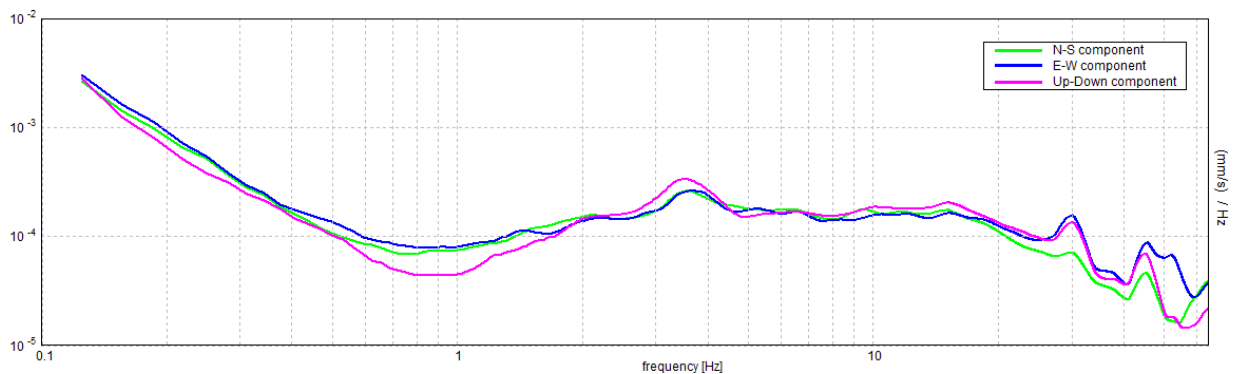
H/V TIME HISTORY



DIRECTIONAL H/V



SINGLE COMPONENT SPECTRA



[According to the SESAME, 2005 guidelines. Please read carefully the *Grilla* manual before interpreting the following tables.]

Max. H/V at 0.91 ± 0.0 Hz (in the range 0.1 - 20.0 Hz).

Criteria for a reliable H/V curve

[All 3 should be fulfilled]

$f_0 > 10 / L_w$	$0.91 > 0.50$	OK	
$n_c(f_0) > 200$	$833.8 > 200$	OK	
$\sigma_A(f) < 2$ for $0.5f_0 < f < 2f_0$ if $f_0 > 0.5\text{Hz}$ $\sigma_A(f) < 3$ for $0.5f_0 < f < 2f_0$ if $f_0 < 0.5\text{Hz}$	Exceeded 0 out of 44 times	OK	

Criteria for a clear H/V peak

[At least 5 out of 6 should be fulfilled]

Exists f^- in $[f_0/4, f_0] \mid A_{H/V}(f^-) < A_0 / 2$			NO
Exists f^+ in $[f_0, 4f_0] \mid A_{H/V}(f^+) < A_0 / 2$	2.5 Hz	OK	
$A_0 > 2$	$1.93 > 2$		NO
$f_{\text{peak}}[A_{H/V}(f) \pm \sigma_A(f)] = f_0 \pm 5\%$	$ 0.00168 < 0.05$	OK	
$\sigma_f < \varepsilon(f_0)$	$0.00152 < 0.13594$	OK	
$\sigma_A(f_0) < \theta(f_0)$	$0.3872 < 2.0$	OK	

L_w	window length
n_w	number of windows used in the analysis
$n_c = L_w n_w f_0$	number of significant cycles
f	current frequency
f_0	H/V peak frequency
σ_f	standard deviation of H/V peak frequency
$\varepsilon(f_0)$	threshold value for the stability condition $\sigma_f < \varepsilon(f_0)$
A_0	H/V peak amplitude at frequency f_0
$A_{H/V}(f)$	H/V curve amplitude at frequency f
f^-	frequency between $f_0/4$ and f_0 for which $A_{H/V}(f^-) < A_0/2$
f^+	frequency between f_0 and $4f_0$ for which $A_{H/V}(f^+) < A_0/2$
$\sigma_A(f)$	standard deviation of $A_{H/V}(f)$, $\sigma_A(f)$ is the factor by which the mean $A_{H/V}(f)$ curve should be multiplied or divided
$\sigma_{\log H/V}(f)$	standard deviation of $\log A_{H/V}(f)$ curve
$\theta(f_0)$	threshold value for the stability condition $\sigma_A(f) < \theta(f_0)$

Threshold values for σ_f and $\sigma_A(f_0)$

Freq. range [Hz]	< 0.2	0.2 – 0.5	0.5 – 1.0	1.0 – 2.0	> 2.0
$\varepsilon(f_0)$ [Hz]	$0.25 f_0$	$0.2 f_0$	$0.15 f_0$	$0.10 f_0$	$0.05 f_0$
$\theta(f_0)$ for $\sigma_A(f_0)$	3.0	2.5	2.0	1.78	1.58
$\log \theta(f_0)$ for $\sigma_{\log H/V}(f_0)$	0.48	0.40	0.30	0.25	0.20

BASTIGLIA_MS, TR3

036001P73211HVSR185

Instrument: TRZ-0108/01-10

Start recording: 10/03/02 13:44:44 End recording: 10/03/02 14:44:45

Channel labels: NORTH SOUTH; EAST WEST ; UP DOWN

Trace length: 1h00'00". Analyzed 83% trace (manual window selection)

Sampling rate: 128 Hz

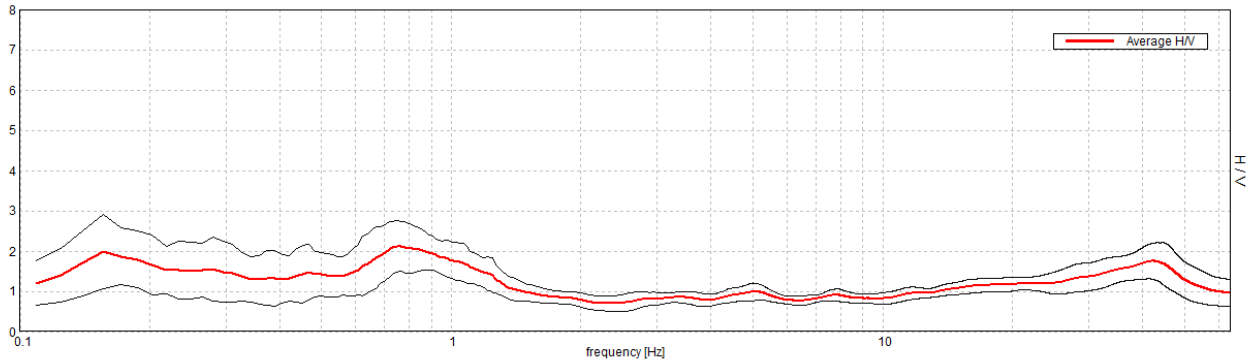
Window size: 60 s

Smoothing type: Triangular window

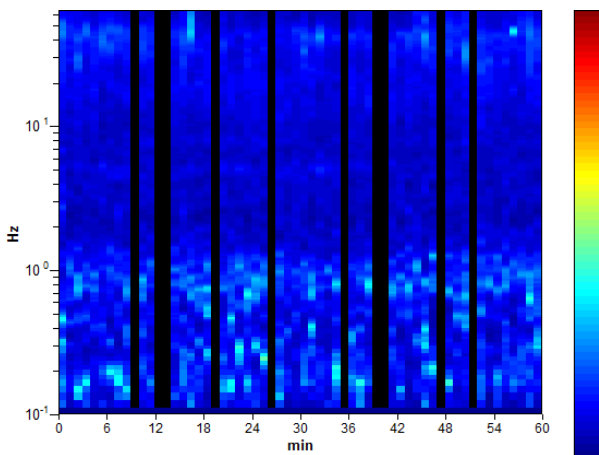
Smoothing: 10%

HORIZONTAL TO VERTICAL SPECTRAL RATIO

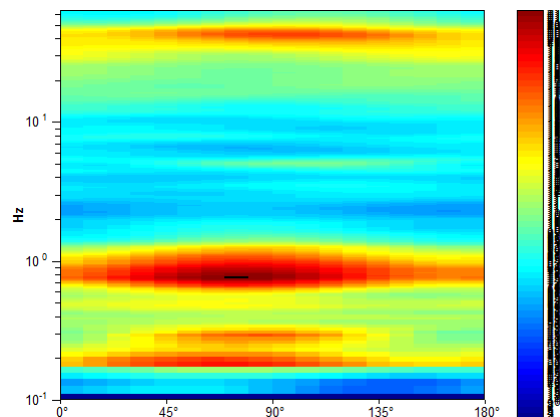
Max. H/V at 0.75 ± 0.11 Hz (in the range 0.1 - 20.0 Hz).



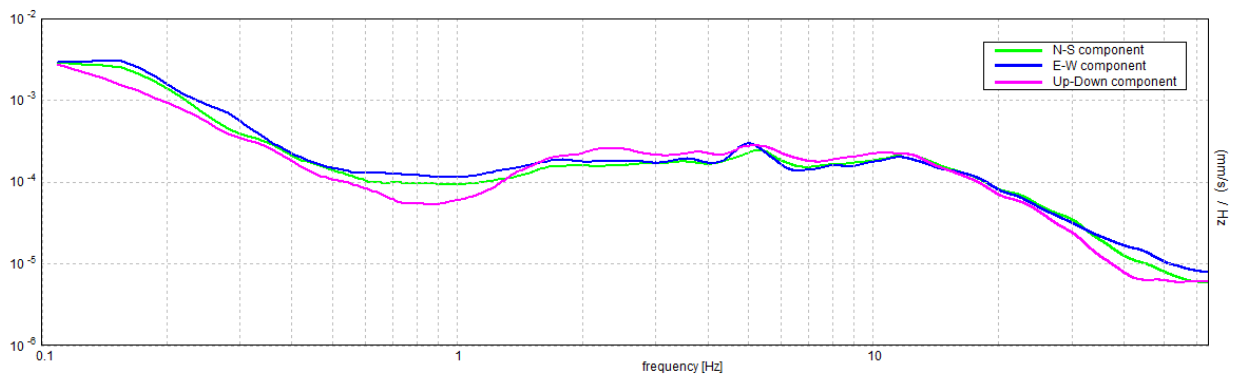
H/V TIME HISTORY



DIRECTIONAL H/V



SINGLE COMPONENT SPECTRA



[According to the SESAME, 2005 guidelines. Please read carefully the *Grilla* manual before interpreting the following tables.]

Max. H/V at 0.75 ± 0.11 Hz (in the range 0.1 - 20.0 Hz).

Criteria for a reliable H/V curve

[All 3 should be fulfilled]

$f_0 > 10 / L_w$	$0.75 > 0.17$	OK	
$n_c(f_0) > 200$	$2250.0 > 200$	OK	
$\sigma_A(f) < 2$ for $0.5f_0 < f < 2f_0$ if $f_0 > 0.5\text{Hz}$ $\sigma_A(f) < 3$ for $0.5f_0 < f < 2f_0$ if $f_0 < 0.5\text{Hz}$	Exceeded 0 out of 73 times	OK	

Criteria for a clear H/V peak

[At least 5 out of 6 should be fulfilled]

Exists f^- in $[f_0/4, f_0] \mid A_{H/V}(f^-) < A_0 / 2$			NO
Exists f^+ in $[f_0, 4f_0] \mid A_{H/V}(f^+) < A_0 / 2$	1.391 Hz	OK	
$A_0 > 2$	$2.12 > 2$	OK	
$f_{\text{peak}}[A_{H/V}(f) \pm \sigma_A(f)] = f_0 \pm 5\%$	$ 0.07528 < 0.05$		NO
$\sigma_f < \varepsilon(f_0)$	$0.05646 < 0.1125$	OK	
$\sigma_A(f_0) < \theta(f_0)$	$0.3205 < 2.0$	OK	

L_w	window length
n_w	number of windows used in the analysis
$n_c = L_w n_w f_0$	number of significant cycles
f	current frequency
f_0	H/V peak frequency
σ_f	standard deviation of H/V peak frequency
$\varepsilon(f_0)$	threshold value for the stability condition $\sigma_f < \varepsilon(f_0)$
A_0	H/V peak amplitude at frequency f_0
$A_{H/V}(f)$	H/V curve amplitude at frequency f
f^-	frequency between $f_0/4$ and f_0 for which $A_{H/V}(f^-) < A_0/2$
f^+	frequency between f_0 and $4f_0$ for which $A_{H/V}(f^+) < A_0/2$
$\sigma_A(f)$	standard deviation of $A_{H/V}(f)$, $\sigma_A(f)$ is the factor by which the mean $A_{H/V}(f)$ curve should be multiplied or divided
$\sigma_{\log H/V}(f)$	standard deviation of $\log A_{H/V}(f)$ curve
$\theta(f_0)$	threshold value for the stability condition $\sigma_A(f) < \theta(f_0)$

Threshold values for σ_f and $\sigma_A(f_0)$

Freq. range [Hz]	< 0.2	0.2 – 0.5	0.5 – 1.0	1.0 – 2.0	> 2.0
$\varepsilon(f_0)$ [Hz]	$0.25 f_0$	$0.2 f_0$	$0.15 f_0$	$0.10 f_0$	$0.05 f_0$
$\theta(f_0)$ for $\sigma_A(f_0)$	3.0	2.5	2.0	1.78	1.58
$\log \theta(f_0)$ for $\sigma_{\log H/V}(f_0)$	0.48	0.40	0.30	0.25	0.20

BASTIGLIA_MS, TR4

036001P73212HVSR186

Instrument: TRZ-0108/01-10

Start recording: 04/03/02 10:40:08 End recording: 04/03/02 11:00:09

Channel labels: NORTH SOUTH; EAST WEST ; UP DOWN

Trace length: 0h20'00". Analyzed 78% trace (manual window selection)

Sampling rate: 128 Hz

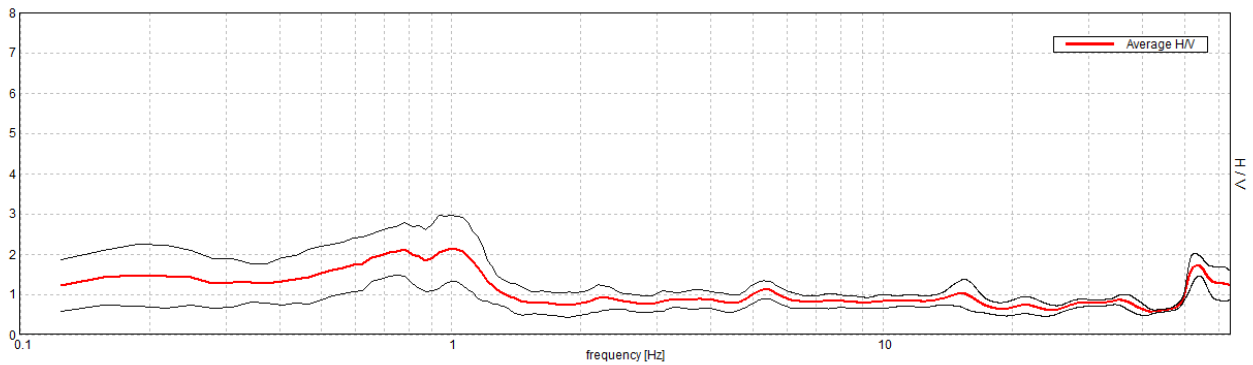
Window size: 20 s

Smoothing type: Triangular window

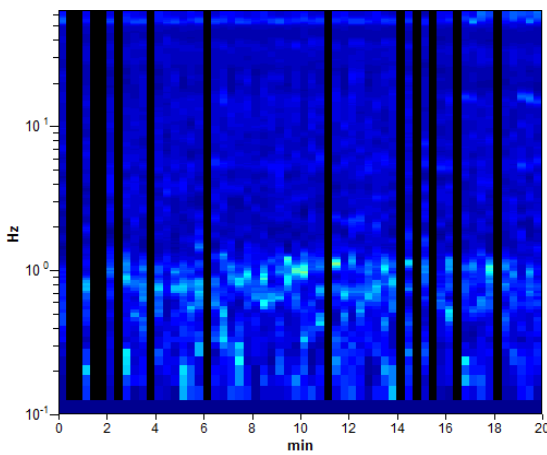
Smoothing: 10%

HORIZONTAL TO VERTICAL SPECTRAL RATIO

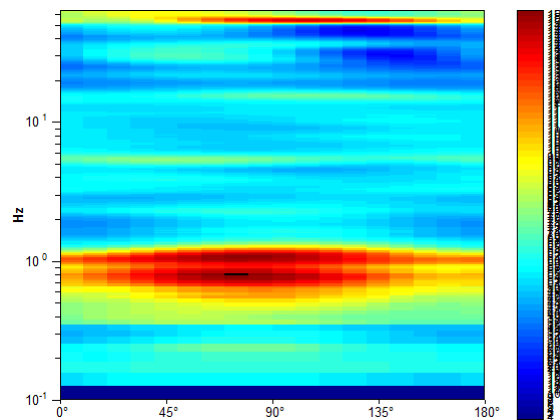
Max. H/V at 1.0 ± 0.07 Hz (in the range 0.1 - 20.0 Hz).



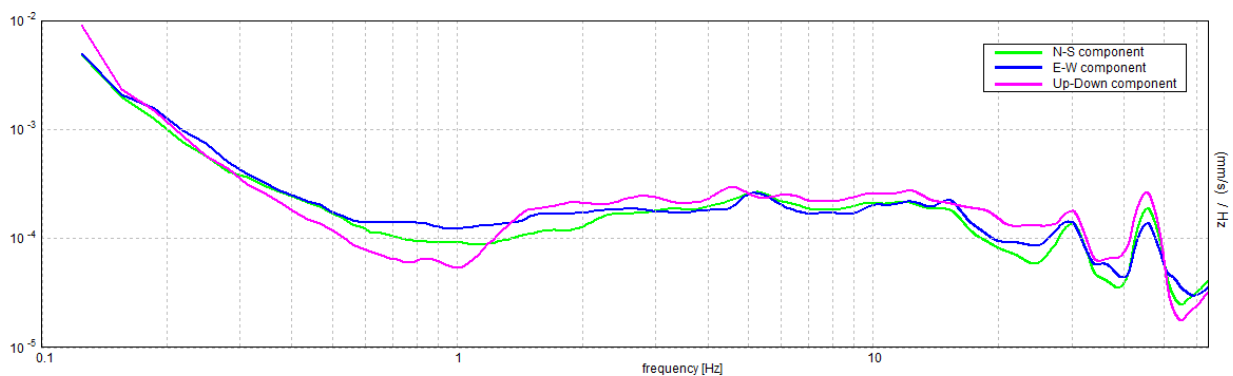
H/V TIME HISTORY



DIRECTIONAL H/V



SINGLE COMPONENT SPECTRA



[According to the SESAME, 2005 guidelines. Please read carefully the *Grilla* manual before interpreting the following tables.]

Max. H/V at 1.0 ± 0.07 Hz (in the range 0.1 - 20.0 Hz).

Criteria for a reliable H/V curve

[All 3 should be fulfilled]

$f_0 > 10 / L_w$	$1.00 > 0.50$	OK	
$n_c(f_0) > 200$	$940.0 > 200$	OK	
$\sigma_A(f) < 2$ for $0.5f_0 < f < 2f_0$ if $f_0 > 0.5\text{Hz}$ $\sigma_A(f) < 3$ for $0.5f_0 < f < 2f_0$ if $f_0 < 0.5\text{Hz}$	Exceeded 0 out of 49 times	OK	

Criteria for a clear H/V peak

[At least 5 out of 6 should be fulfilled]

Exists f^- in $[f_0/4, f_0] \mid A_{H/V}(f^-) < A_0 / 2$			NO
Exists f^+ in $[f_0, 4f_0] \mid A_{H/V}(f^+) < A_0 / 2$	1.313 Hz	OK	
$A_0 > 2$	$2.14 > 2$	OK	
$f_{\text{peak}}[A_{H/V}(f) \pm \sigma_A(f)] = f_0 \pm 5\%$	$ 0.03233 < 0.05$	OK	
$\sigma_f < \varepsilon(f_0)$	$0.03233 < 0.1$	OK	
$\sigma_A(f_0) < \theta(f_0)$	$0.4032 < 1.78$	OK	

L_w	window length
n_w	number of windows used in the analysis
$n_c = L_w n_w f_0$	number of significant cycles
f	current frequency
f_0	H/V peak frequency
σ_f	standard deviation of H/V peak frequency
$\varepsilon(f_0)$	threshold value for the stability condition $\sigma_f < \varepsilon(f_0)$
A_0	H/V peak amplitude at frequency f_0
$A_{H/V}(f)$	H/V curve amplitude at frequency f
f^-	frequency between $f_0/4$ and f_0 for which $A_{H/V}(f^-) < A_0/2$
f^+	frequency between f_0 and $4f_0$ for which $A_{H/V}(f^+) < A_0/2$
$\sigma_A(f)$	standard deviation of $A_{H/V}(f)$, $\sigma_A(f)$ is the factor by which the mean $A_{H/V}(f)$ curve should be multiplied or divided
$\sigma_{\log H/V}(f)$	standard deviation of $\log A_{H/V}(f)$ curve
$\theta(f_0)$	threshold value for the stability condition $\sigma_A(f) < \theta(f_0)$

Threshold values for σ_f and $\sigma_A(f_0)$

Freq. range [Hz]	< 0.2	0.2 – 0.5	0.5 – 1.0	1.0 – 2.0	> 2.0
$\varepsilon(f_0)$ [Hz]	$0.25 f_0$	$0.2 f_0$	$0.15 f_0$	$0.10 f_0$	$0.05 f_0$
$\theta(f_0)$ for $\sigma_A(f_0)$	3.0	2.5	2.0	1.78	1.58
$\log \theta(f_0)$ for $\sigma_{\log H/V}(f_0)$	0.48	0.40	0.30	0.25	0.20

BASTIGLIA_MS, TR5

036001P73213HVSR187

Instrument: TRZ-0108/01-10

Start recording: 04/03/02 12:42:14 End recording: 04/03/02 13:02:14

Channel labels: NORTH SOUTH; EAST WEST ; UP DOWN

Trace length: 0h20'00". Analyzed 60% trace (manual window selection)

Sampling rate: 128 Hz

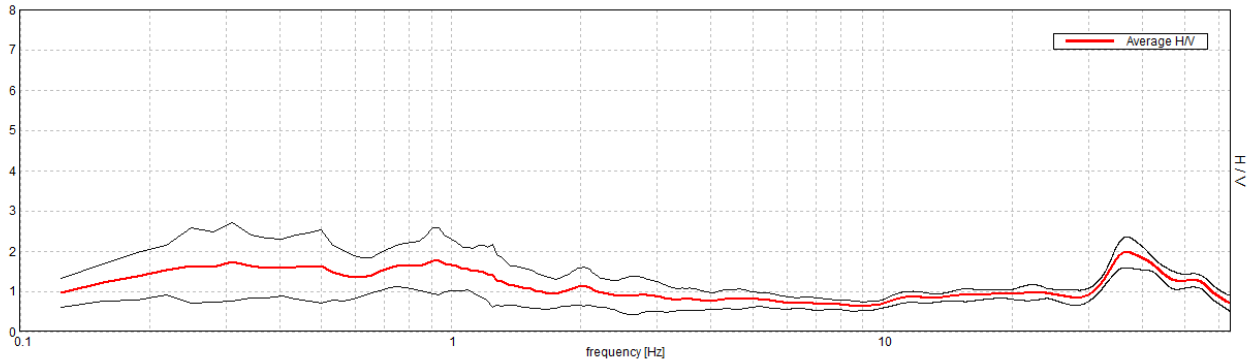
Window size: 20 s

Smoothing type: Triangular window

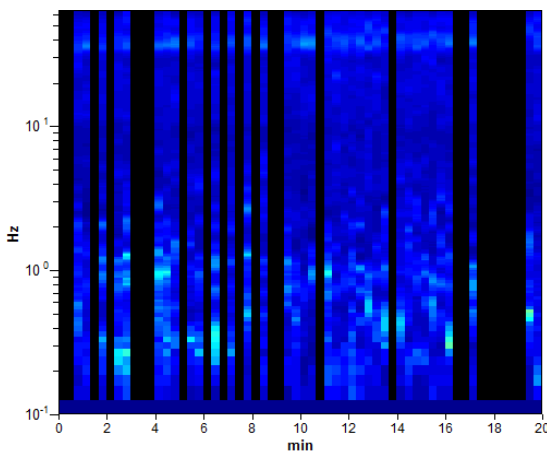
Smoothing: 10%

HORIZONTAL TO VERTICAL SPECTRAL RATIO

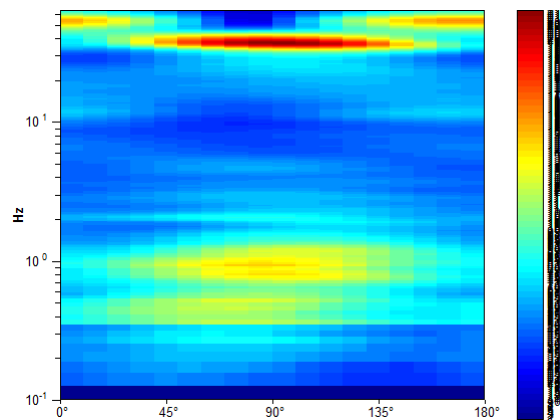
Max. H/V at 0.91 ± 0.15 Hz (in the range 0.1 - 20.0 Hz).



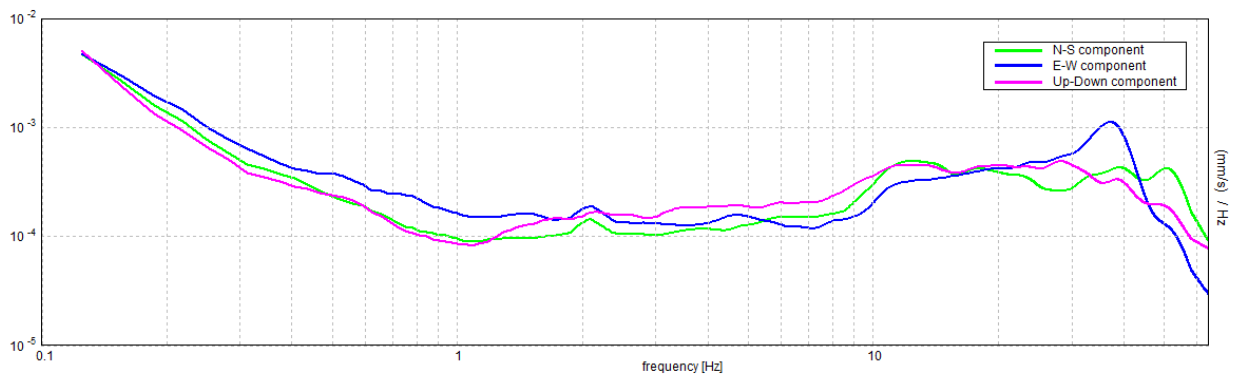
H/V TIME HISTORY



DIRECTIONAL H/V



SINGLE COMPONENT SPECTRA



[According to the SESAME, 2005 guidelines. Please read carefully the *Grilla* manual before interpreting the following tables.]

Max. H/V at 0.91 ± 0.15 Hz (in the range 0.1 - 20.0 Hz).

Criteria for a reliable H/V curve

[All 3 should be fulfilled]

$f_0 > 10 / L_w$	$0.91 > 0.50$	OK	
$n_c(f_0) > 200$	$652.5 > 200$	OK	
$\sigma_A(f) < 2$ for $0.5f_0 < f < 2f_0$ if $f_0 > 0.5\text{Hz}$ $\sigma_A(f) < 3$ for $0.5f_0 < f < 2f_0$ if $f_0 < 0.5\text{Hz}$	Exceeded 0 out of 44 times	OK	

Criteria for a clear H/V peak

[At least 5 out of 6 should be fulfilled]

Exists f^- in $[f_0/4, f_0] \mid A_{H/V}(f^-) < A_0 / 2$			NO
Exists f^+ in $[f_0, 4f_0] \mid A_{H/V}(f^+) < A_0 / 2$	3.0 Hz	OK	
$A_0 > 2$	$1.75 > 2$		NO
$f_{\text{peak}}[A_{H/V}(f) \pm \sigma_A(f)] = f_0 \pm 5\%$	$ 0.078 < 0.05$		NO
$\sigma_f < \varepsilon(f_0)$	$0.07069 < 0.13594$	OK	
$\sigma_A(f_0) < \theta(f_0)$	$0.396 < 2.0$	OK	

L_w	window length
n_w	number of windows used in the analysis
$n_c = L_w n_w f_0$	number of significant cycles
f	current frequency
f_0	H/V peak frequency
σ_f	standard deviation of H/V peak frequency
$\varepsilon(f_0)$	threshold value for the stability condition $\sigma_f < \varepsilon(f_0)$
A_0	H/V peak amplitude at frequency f_0
$A_{H/V}(f)$	H/V curve amplitude at frequency f
f^-	frequency between $f_0/4$ and f_0 for which $A_{H/V}(f^-) < A_0/2$
f^+	frequency between f_0 and $4f_0$ for which $A_{H/V}(f^+) < A_0/2$
$\sigma_A(f)$	standard deviation of $A_{H/V}(f)$, $\sigma_A(f)$ is the factor by which the mean $A_{H/V}(f)$ curve should be multiplied or divided
$\sigma_{\log H/V}(f)$	standard deviation of $\log A_{H/V}(f)$ curve
$\theta(f_0)$	threshold value for the stability condition $\sigma_A(f) < \theta(f_0)$

Threshold values for σ_f and $\sigma_A(f_0)$

Freq. range [Hz]	< 0.2	0.2 – 0.5	0.5 – 1.0	1.0 – 2.0	> 2.0
$\varepsilon(f_0)$ [Hz]	$0.25 f_0$	$0.2 f_0$	$0.15 f_0$	$0.10 f_0$	$0.05 f_0$
$\theta(f_0)$ for $\sigma_A(f_0)$	3.0	2.5	2.0	1.78	1.58
$\log \theta(f_0)$ for $\sigma_{\log H/V}(f_0)$	0.48	0.40	0.30	0.25	0.20

BASTIGLIA_MS, TR6

036001P73214HVSR188

Instrument: TRZ-0108/01-10

Start recording: 04/03/02 15:37:06 End recording: 04/03/02 15:57:07

Channel labels: NORTH SOUTH; EAST WEST ; UP DOWN

Trace length: 0h20'00". Analyzed 85% trace (manual window selection)

Sampling rate: 128 Hz

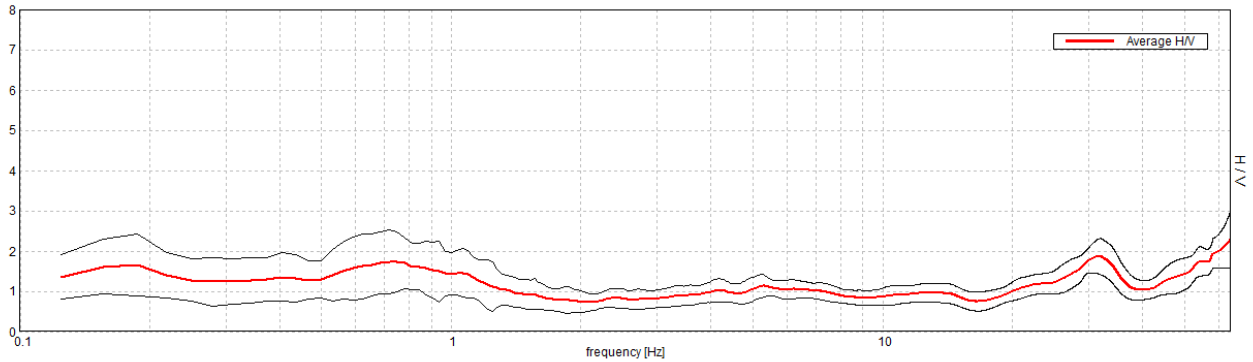
Window size: 20 s

Smoothing type: Triangular window

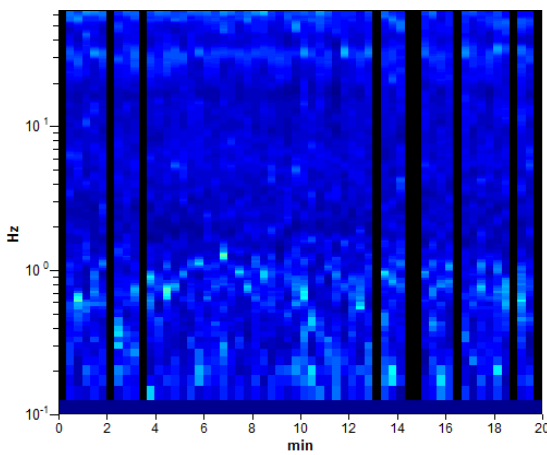
Smoothing: 10%

HORIZONTAL TO VERTICAL SPECTRAL RATIO

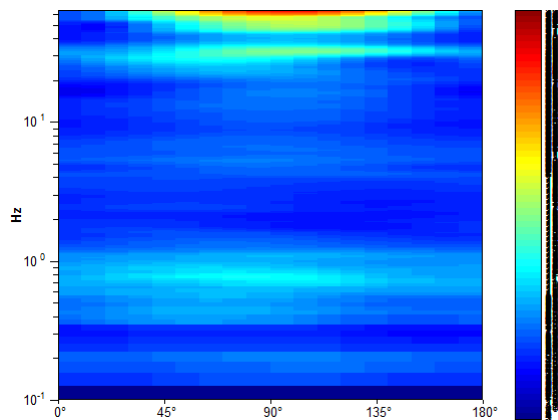
Max. H/V at 0.72 ± 0.06 Hz (in the range 0.1 - 20.0 Hz).



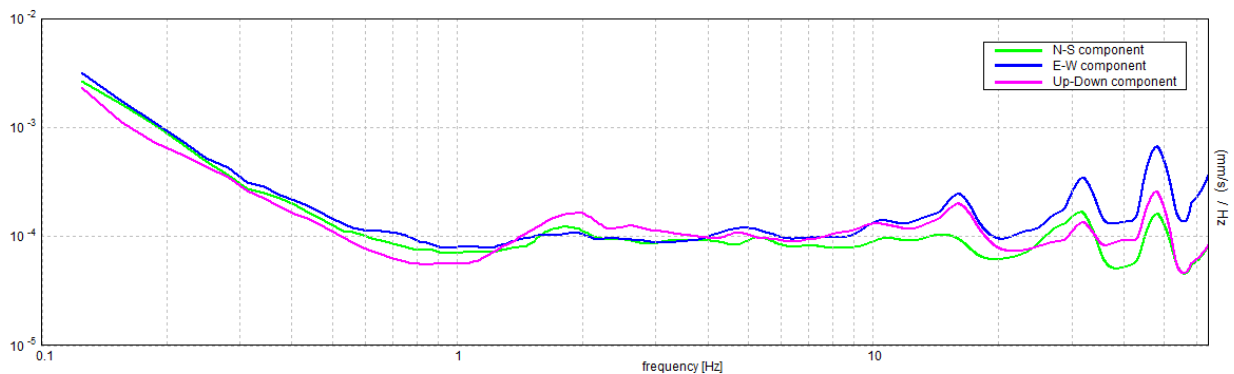
H/V TIME HISTORY



DIRECTIONAL H/V



SINGLE COMPONENT SPECTRA



[According to the SESAME, 2005 guidelines. Please read carefully the *Grilla* manual before interpreting the following tables.]

Max. H/V at 0.72 ± 0.06 Hz (in the range 0.1 - 20.0 Hz).

Criteria for a reliable H/V curve

[All 3 should be fulfilled]

$f_0 > 10 / L_w$	$0.72 > 0.50$	OK	
$n_c(f_0) > 200$	$733.1 > 200$	OK	
$\sigma_A(f) < 2$ for $0.5f_0 < f < 2f_0$ if $f_0 > 0.5\text{Hz}$ $\sigma_A(f) < 3$ for $0.5f_0 < f < 2f_0$ if $f_0 < 0.5\text{Hz}$	Exceeded 0 out of 36 times	OK	

Criteria for a clear H/V peak

[At least 5 out of 6 should be fulfilled]

Exists f^- in $[f_0/4, f_0] \mid A_{H/V}(f^-) < A_0 / 2$			NO
Exists f^+ in $[f_0, 4f_0] \mid A_{H/V}(f^+) < A_0 / 2$	1.625 Hz	OK	
$A_0 > 2$	$1.74 > 2$		NO
$f_{\text{peak}}[A_{H/V}(f) \pm \sigma_A(f)] = f_0 \pm 5\%$	$ 0.03832 < 0.05$	OK	
$\sigma_f < \varepsilon(f_0)$	$0.02754 < 0.10781$	OK	
$\sigma_A(f_0) < \theta(f_0)$	$0.3943 < 2.0$	OK	

L_w	window length
n_w	number of windows used in the analysis
$n_c = L_w n_w f_0$	number of significant cycles
f	current frequency
f_0	H/V peak frequency
σ_f	standard deviation of H/V peak frequency
$\varepsilon(f_0)$	threshold value for the stability condition $\sigma_f < \varepsilon(f_0)$
A_0	H/V peak amplitude at frequency f_0
$A_{H/V}(f)$	H/V curve amplitude at frequency f
f^-	frequency between $f_0/4$ and f_0 for which $A_{H/V}(f^-) < A_0/2$
f^+	frequency between f_0 and $4f_0$ for which $A_{H/V}(f^+) < A_0/2$
$\sigma_A(f)$	standard deviation of $A_{H/V}(f)$, $\sigma_A(f)$ is the factor by which the mean $A_{H/V}(f)$ curve should be multiplied or divided
$\sigma_{\log H/V}(f)$	standard deviation of $\log A_{H/V}(f)$ curve
$\theta(f_0)$	threshold value for the stability condition $\sigma_A(f) < \theta(f_0)$

Threshold values for σ_f and $\sigma_A(f_0)$

Freq. range [Hz]	< 0.2	0.2 – 0.5	0.5 – 1.0	1.0 – 2.0	> 2.0
$\varepsilon(f_0)$ [Hz]	$0.25 f_0$	$0.2 f_0$	$0.15 f_0$	$0.10 f_0$	$0.05 f_0$
$\theta(f_0)$ for $\sigma_A(f_0)$	3.0	2.5	2.0	1.78	1.58
$\log \theta(f_0)$ for $\sigma_{\log H/V}(f_0)$	0.48	0.40	0.30	0.25	0.20

BASTIGLIA_MS, TR7

036001P73215HVSR189

Instrument: TRZ-0108/01-10

Start recording: 22/03/02 10:21:36 End recording: 22/03/02 11:21:37

Channel labels: NORTH SOUTH; EAST WEST ; UP DOWN

Trace length: 1h00'00". Analyzed 77% trace (manual window selection)

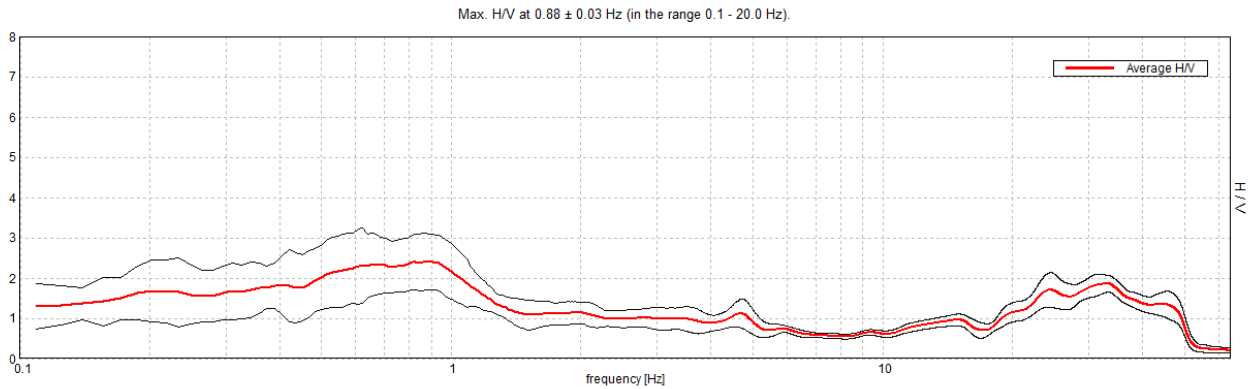
Sampling rate: 128 Hz

Window size: 60 s

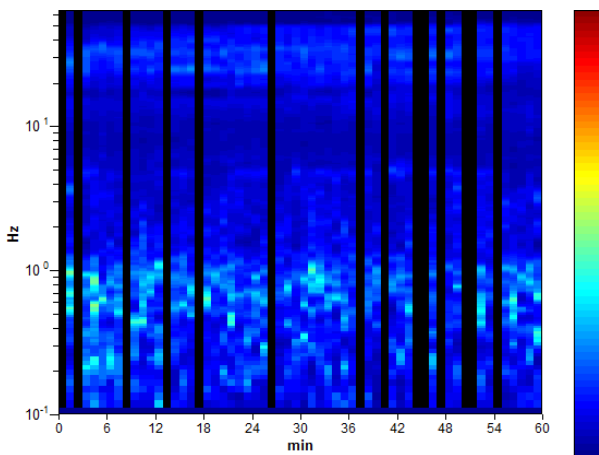
Smoothing type: Triangular window

Smoothing: 10%

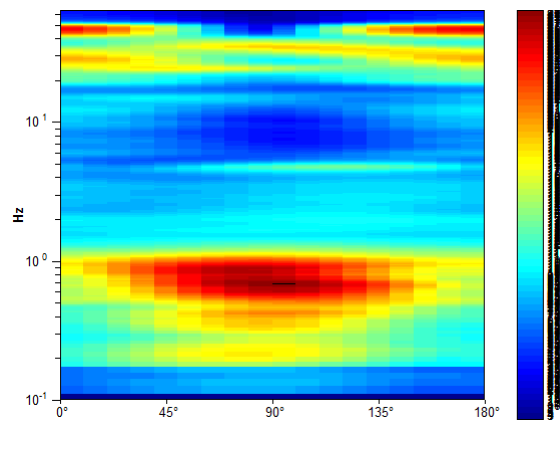
HORIZONTAL TO VERTICAL SPECTRAL RATIO



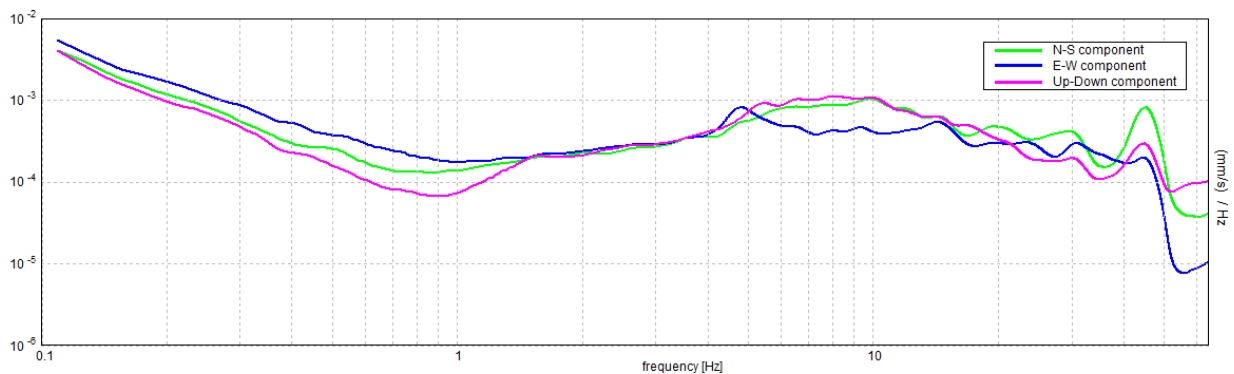
H/V TIME HISTORY



DIRECTIONAL H/V



SINGLE COMPONENT SPECTRA



[According to the SESAME, 2005 guidelines. Please read carefully the *Grilla* manual before interpreting the following tables.]

Max. H/V at 0.88 ± 0.03 Hz (in the range 0.1 - 20.0 Hz).

Criteria for a reliable H/V curve

[All 3 should be fulfilled]

$f_0 > 10 / L_w$	$0.88 > 0.17$	OK	
$n_c(f_0) > 200$	$2415.0 > 200$	OK	
$\sigma_A(f) < 2$ for $0.5f_0 < f < 2f_0$ if $f_0 > 0.5\text{Hz}$ $\sigma_A(f) < 3$ for $0.5f_0 < f < 2f_0$ if $f_0 < 0.5\text{Hz}$	Exceeded 0 out of 85 times	OK	

Criteria for a clear H/V peak

[At least 5 out of 6 should be fulfilled]

Exists f^- in $[f_0/4, f_0]$ $A_{H/V}(f^-) < A_0 / 2$			NO
Exists f^+ in $[f_0, 4f_0]$ $A_{H/V}(f^+) < A_0 / 2$	1.375 Hz	OK	
$A_0 > 2$	$2.41 > 2$	OK	
$f_{\text{peak}}[A_{H/V}(f) \pm \sigma_A(f)] = f_0 \pm 5\%$	$ 0.01603 < 0.05$	OK	
$\sigma_f < \varepsilon(f_0)$	$0.01403 < 0.13125$	OK	
$\sigma_A(f_0) < \theta(f_0)$	$0.3443 < 2.0$	OK	

L_w	window length
n_w	number of windows used in the analysis
$n_c = L_w n_w f_0$	number of significant cycles
f	current frequency
f_0	H/V peak frequency
σ_f	standard deviation of H/V peak frequency
$\varepsilon(f_0)$	threshold value for the stability condition $\sigma_f < \varepsilon(f_0)$
A_0	H/V peak amplitude at frequency f_0
$A_{H/V}(f)$	H/V curve amplitude at frequency f
f^-	frequency between $f_0/4$ and f_0 for which $A_{H/V}(f^-) < A_0/2$
f^+	frequency between f_0 and $4f_0$ for which $A_{H/V}(f^+) < A_0/2$
$\sigma_A(f)$	standard deviation of $A_{H/V}(f)$, $\sigma_A(f)$ is the factor by which the mean $A_{H/V}(f)$ curve should be multiplied or divided
$\sigma_{\log H/V}(f)$	standard deviation of $\log A_{H/V}(f)$ curve
$\theta(f_0)$	threshold value for the stability condition $\sigma_A(f) < \theta(f_0)$

Threshold values for σ_f and $\sigma_A(f_0)$

Freq. range [Hz]	< 0.2	0.2 – 0.5	0.5 – 1.0	1.0 – 2.0	> 2.0
$\varepsilon(f_0)$ [Hz]	$0.25 f_0$	$0.2 f_0$	$0.15 f_0$	$0.10 f_0$	$0.05 f_0$
$\theta(f_0)$ for $\sigma_A(f_0)$	3.0	2.5	2.0	1.78	1.58
$\log \theta(f_0)$ for $\sigma_{\log H/V}(f_0)$	0.48	0.40	0.30	0.25	0.20

BASTIGLIA_MS, TR8

036001P73216HVSR190

Instrument: TRZ-0108/01-10

Start recording: 22/03/02 11:53:03 End recording: 22/03/02 12:53:04

Channel labels: NORTH SOUTH; EAST WEST ; UP DOWN

Trace length: 1h00'00". Analyzed 90% trace (manual window selection)

Sampling rate: 128 Hz

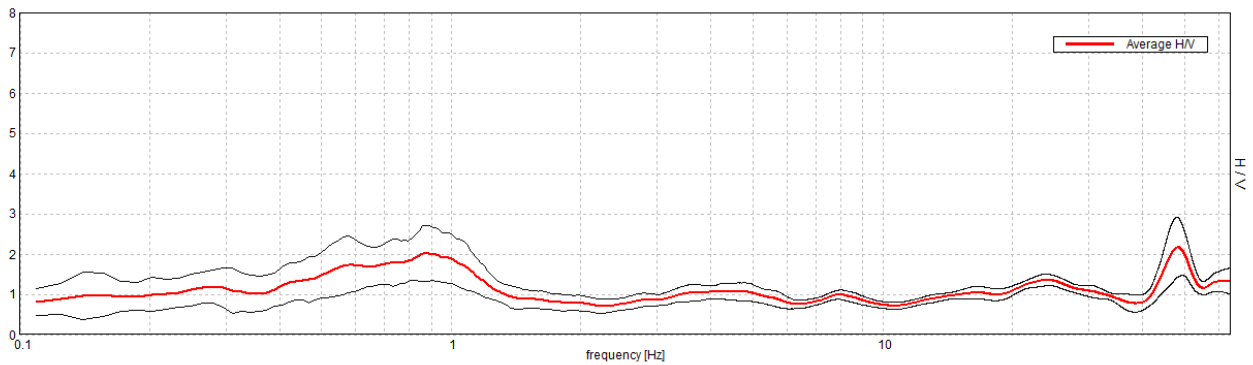
Window size: 60 s

Smoothing type: Triangular window

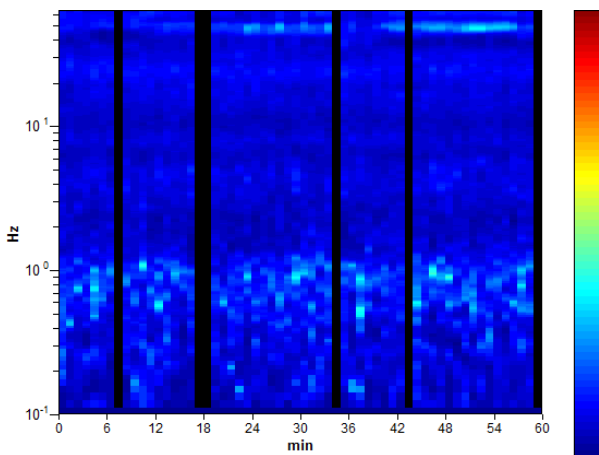
Smoothing: 10%

HORIZONTAL TO VERTICAL SPECTRAL RATIO

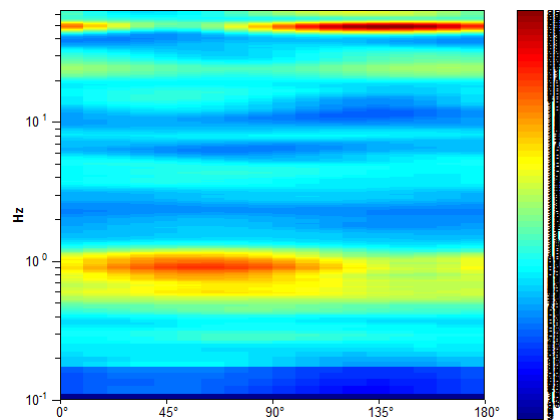
Max. H/V at 0.88 ± 0.03 Hz (in the range 0.1 - 20.0 Hz).



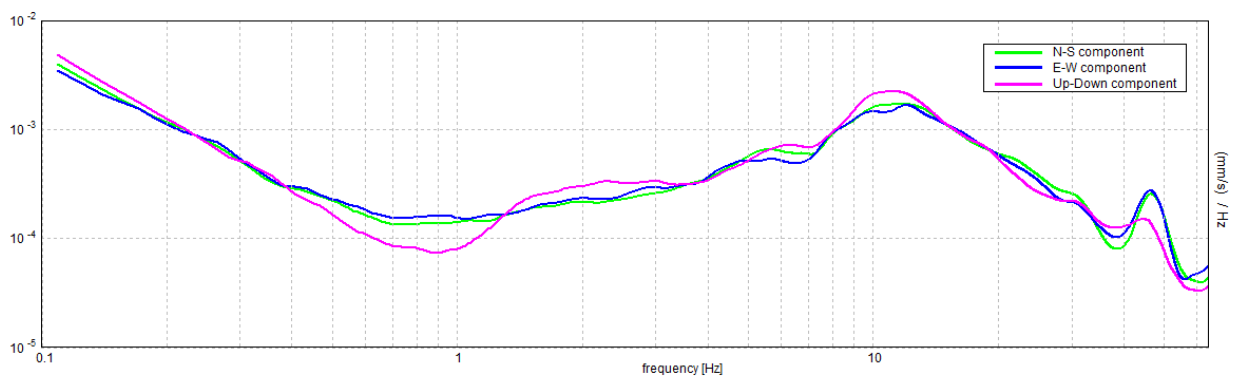
H/V TIME HISTORY



DIRECTIONAL H/V



SINGLE COMPONENT SPECTRA



[According to the SESAME, 2005 guidelines. Please read carefully the *Grilla* manual before interpreting the following tables.]

Max. H/V at 0.88 ± 0.03 Hz (in the range 0.1 - 20.0 Hz).

Criteria for a reliable H/V curve

[All 3 should be fulfilled]

$f_0 > 10 / L_w$	$0.88 > 0.17$	OK	
$n_c(f_0) > 200$	$2835.0 > 200$	OK	
$\sigma_A(f) < 2$ for $0.5f_0 < f < 2f_0$ if $f_0 > 0.5\text{Hz}$ $\sigma_A(f) < 3$ for $0.5f_0 < f < 2f_0$ if $f_0 < 0.5\text{Hz}$	Exceeded 0 out of 85 times	OK	

Criteria for a clear H/V peak

[At least 5 out of 6 should be fulfilled]

Exists f^- in $[f_0/4, f_0] \mid A_{H/V}(f^-) < A_0 / 2$	0.359 Hz	OK	
Exists f^+ in $[f_0, 4f_0] \mid A_{H/V}(f^+) < A_0 / 2$	1.328 Hz	OK	
$A_0 > 2$	$2.02 > 2$	OK	
$f_{\text{peak}}[A_{H/V}(f) \pm \sigma_A(f)] = f_0 \pm 5\%$	$ 0.01965 < 0.05$	OK	
$\sigma_f < \varepsilon(f_0)$	$0.01719 < 0.13125$	OK	
$\sigma_A(f_0) < \theta(f_0)$	$0.3444 < 2.0$	OK	

L_w	window length
n_w	number of windows used in the analysis
$n_c = L_w n_w f_0$	number of significant cycles
f	current frequency
f_0	H/V peak frequency
σ_f	standard deviation of H/V peak frequency
$\varepsilon(f_0)$	threshold value for the stability condition $\sigma_f < \varepsilon(f_0)$
A_0	H/V peak amplitude at frequency f_0
$A_{H/V}(f)$	H/V curve amplitude at frequency f
f^-	frequency between $f_0/4$ and f_0 for which $A_{H/V}(f^-) < A_0/2$
f^+	frequency between f_0 and $4f_0$ for which $A_{H/V}(f^+) < A_0/2$
$\sigma_A(f)$	standard deviation of $A_{H/V}(f)$, $\sigma_A(f)$ is the factor by which the mean $A_{H/V}(f)$ curve should be multiplied or divided
$\sigma_{\log H/V}(f)$	standard deviation of $\log A_{H/V}(f)$ curve
$\theta(f_0)$	threshold value for the stability condition $\sigma_A(f) < \theta(f_0)$

Threshold values for σ_f and $\sigma_A(f_0)$

Freq. range [Hz]	< 0.2	0.2 – 0.5	0.5 – 1.0	1.0 – 2.0	> 2.0
$\varepsilon(f_0)$ [Hz]	$0.25 f_0$	$0.2 f_0$	$0.15 f_0$	$0.10 f_0$	$0.05 f_0$
$\theta(f_0)$ for $\sigma_A(f_0)$	3.0	2.5	2.0	1.78	1.58
$\log \theta(f_0)$ for $\sigma_{\log H/V}(f_0)$	0.48	0.40	0.30	0.25	0.20