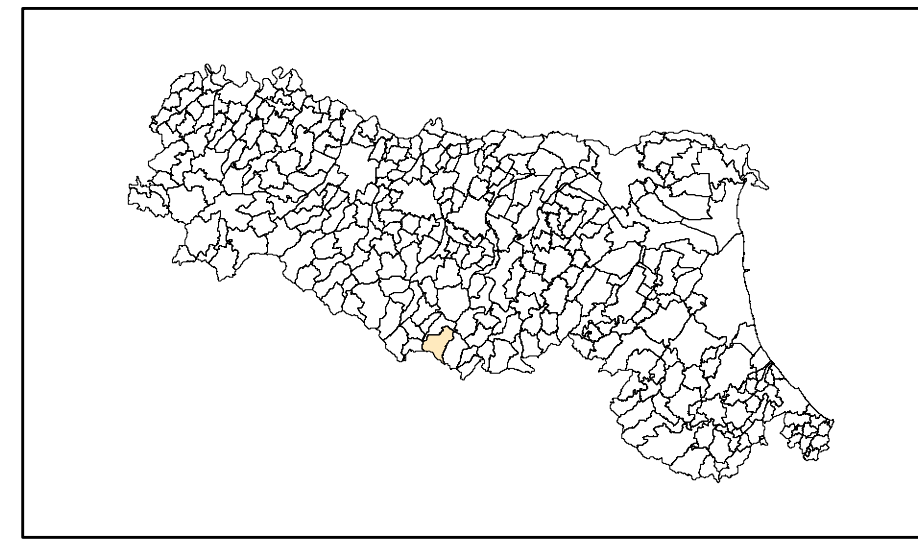


MICROZONAZIONE SISMICA

Carta delle VS

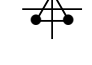




scala 1:10.000

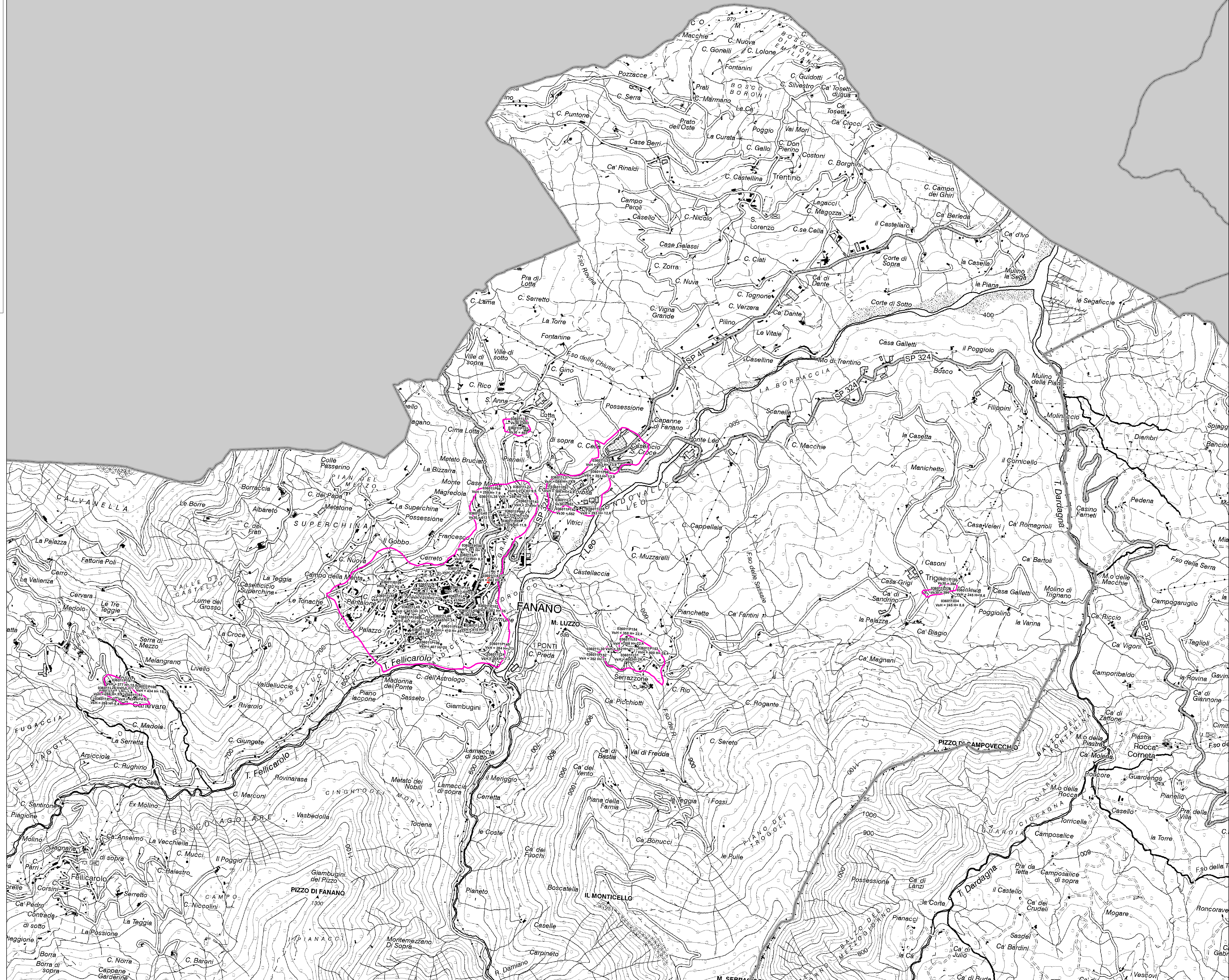
Regione Emilia-Romagna
Comune di Fanano



Regione	Soggetto realizzatore	Data
Emilia Romagna	Studio Geologia Tecnica Dott. Geol. Lorenzo Del Maschio	Ottobre 2017
	Collaboratori Ing. Giorgia Tonioni Dott. Geol. Pierluigi Galli	

Legenda

-  Array sismico, ESACI/SPAC
-  FTN
-  MASW
-  Sviluppo con approfondimento di II livello
-  Limite comunale



0 125 250 500 Metri

TAVOLA 1 DI 3

