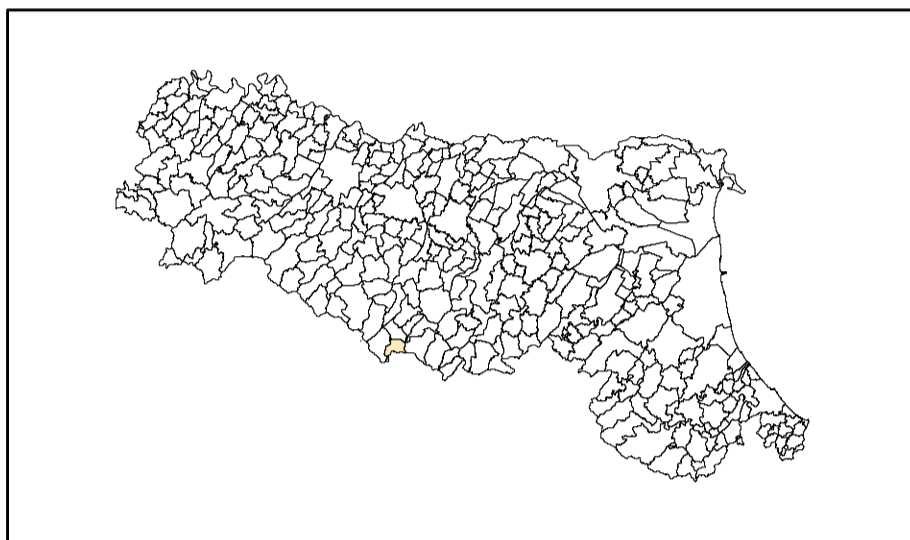


# MICROZONAZIONE SISMICA

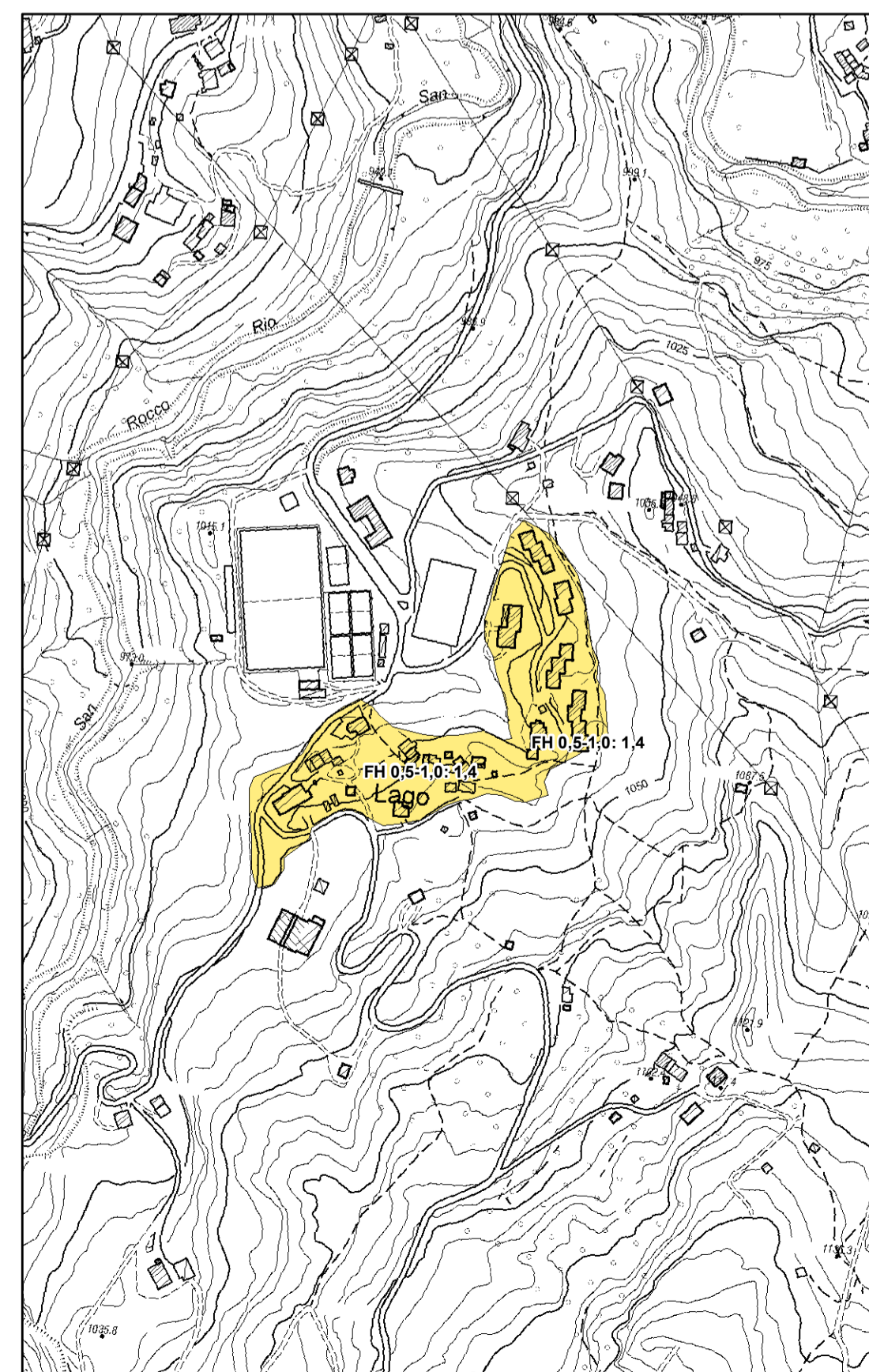
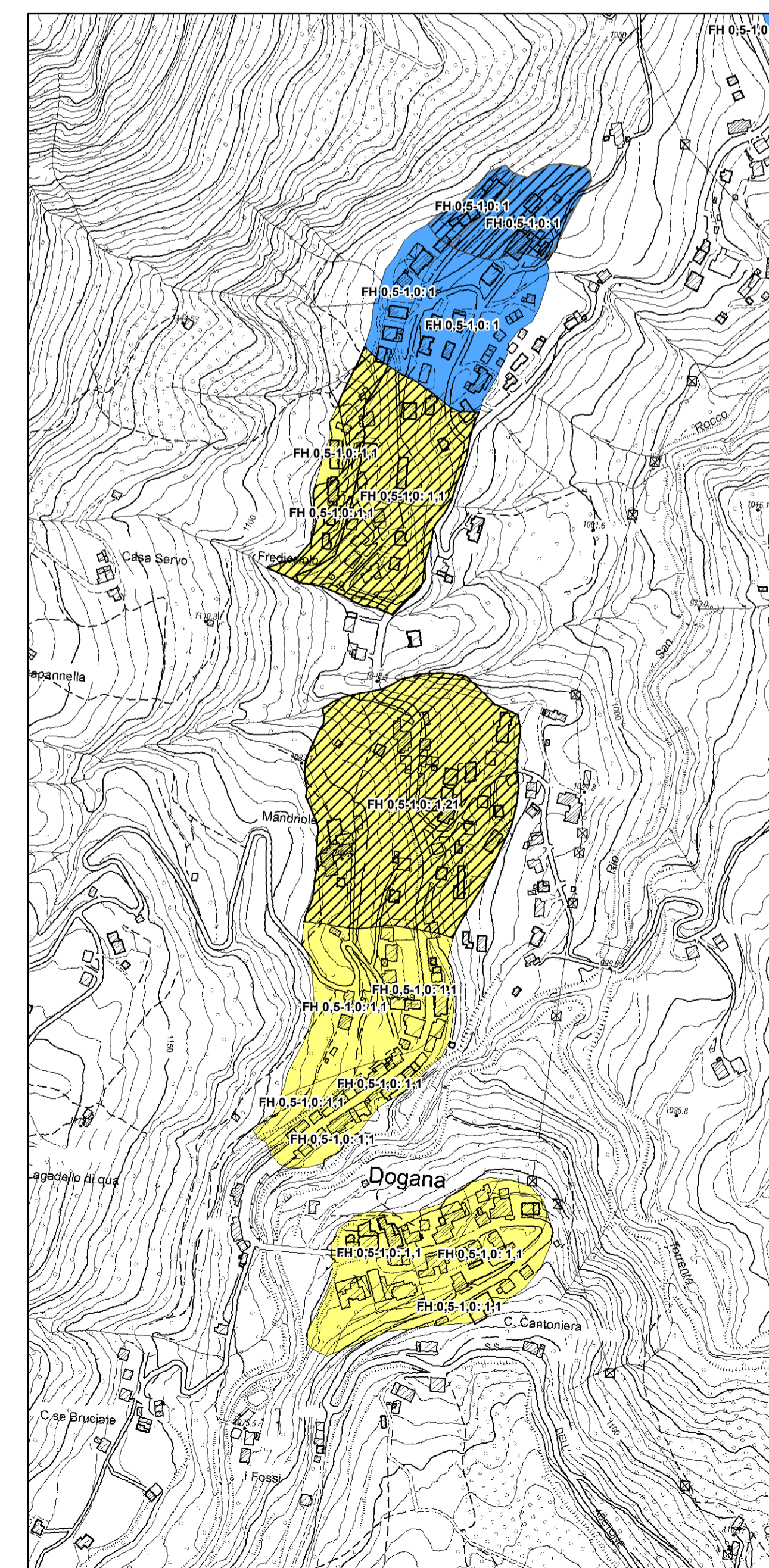
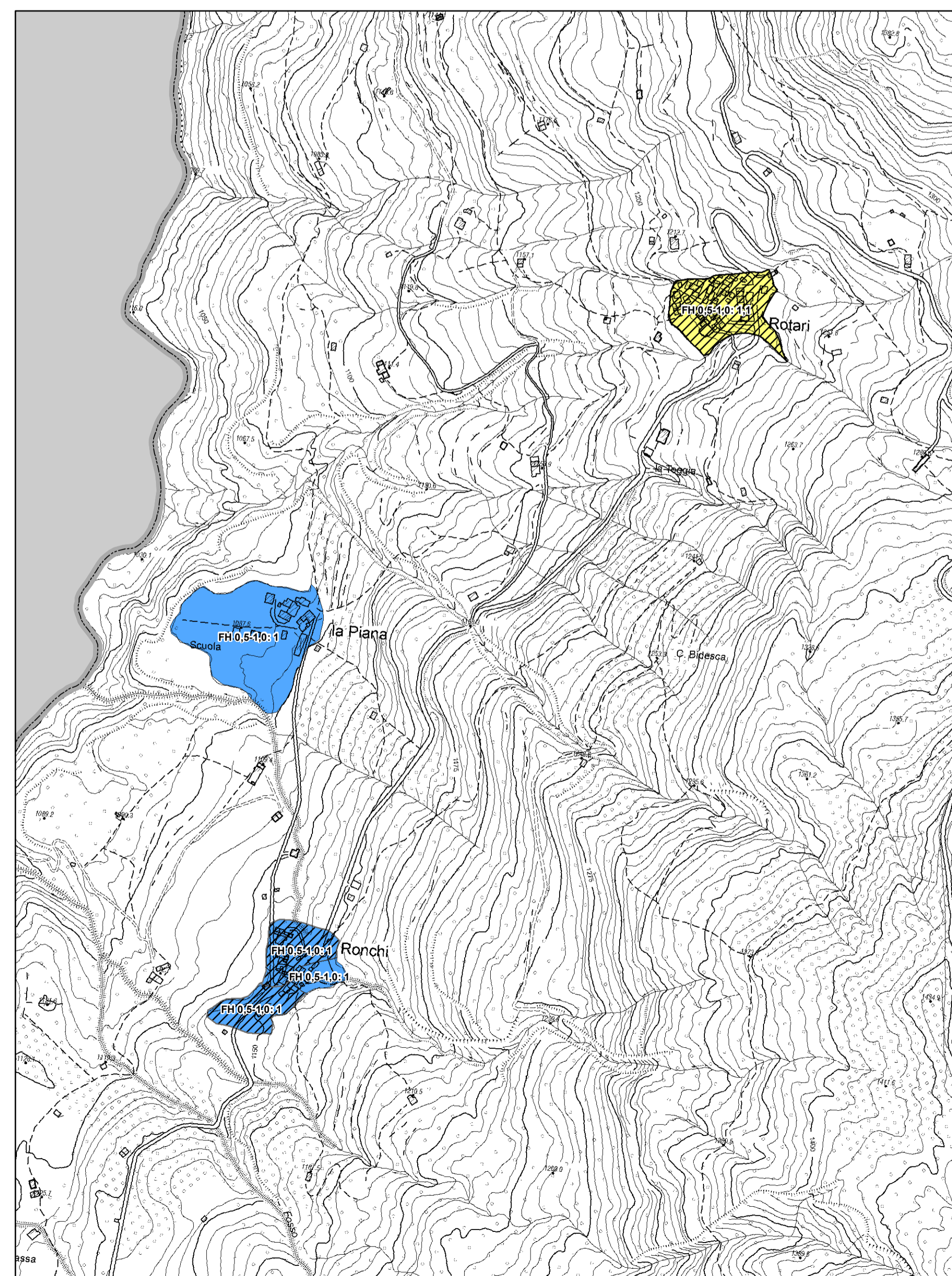
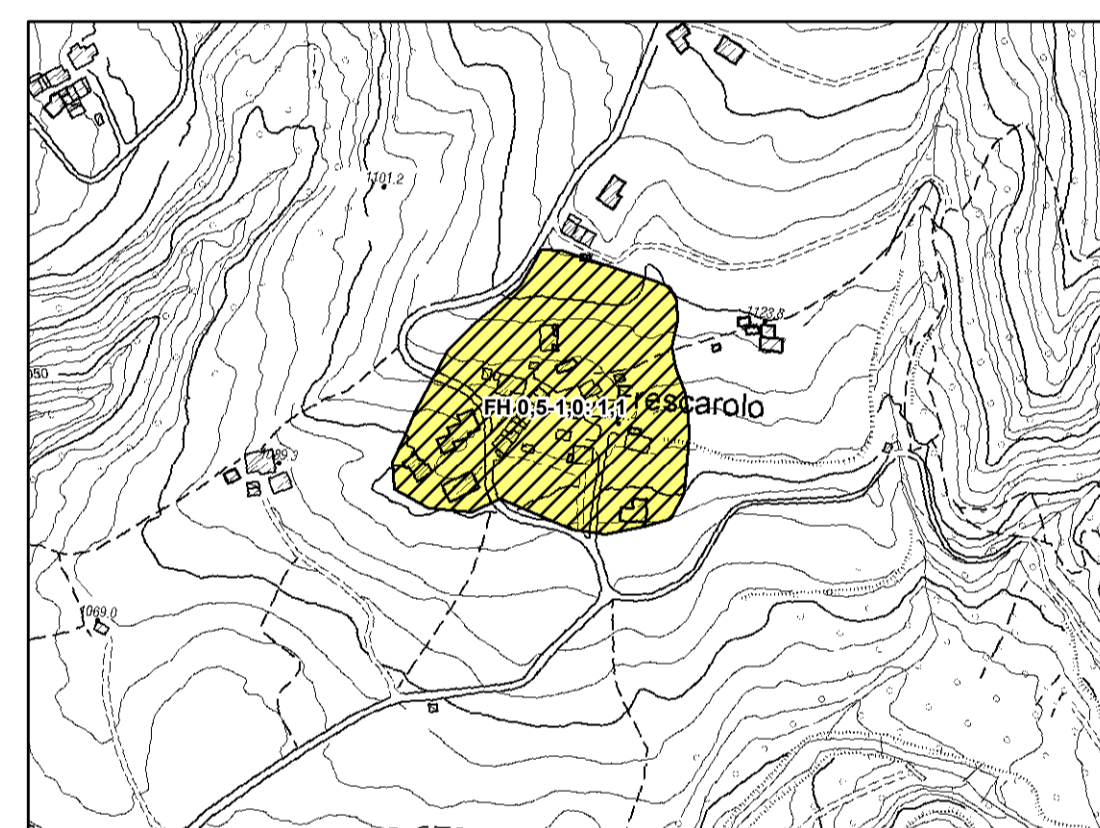
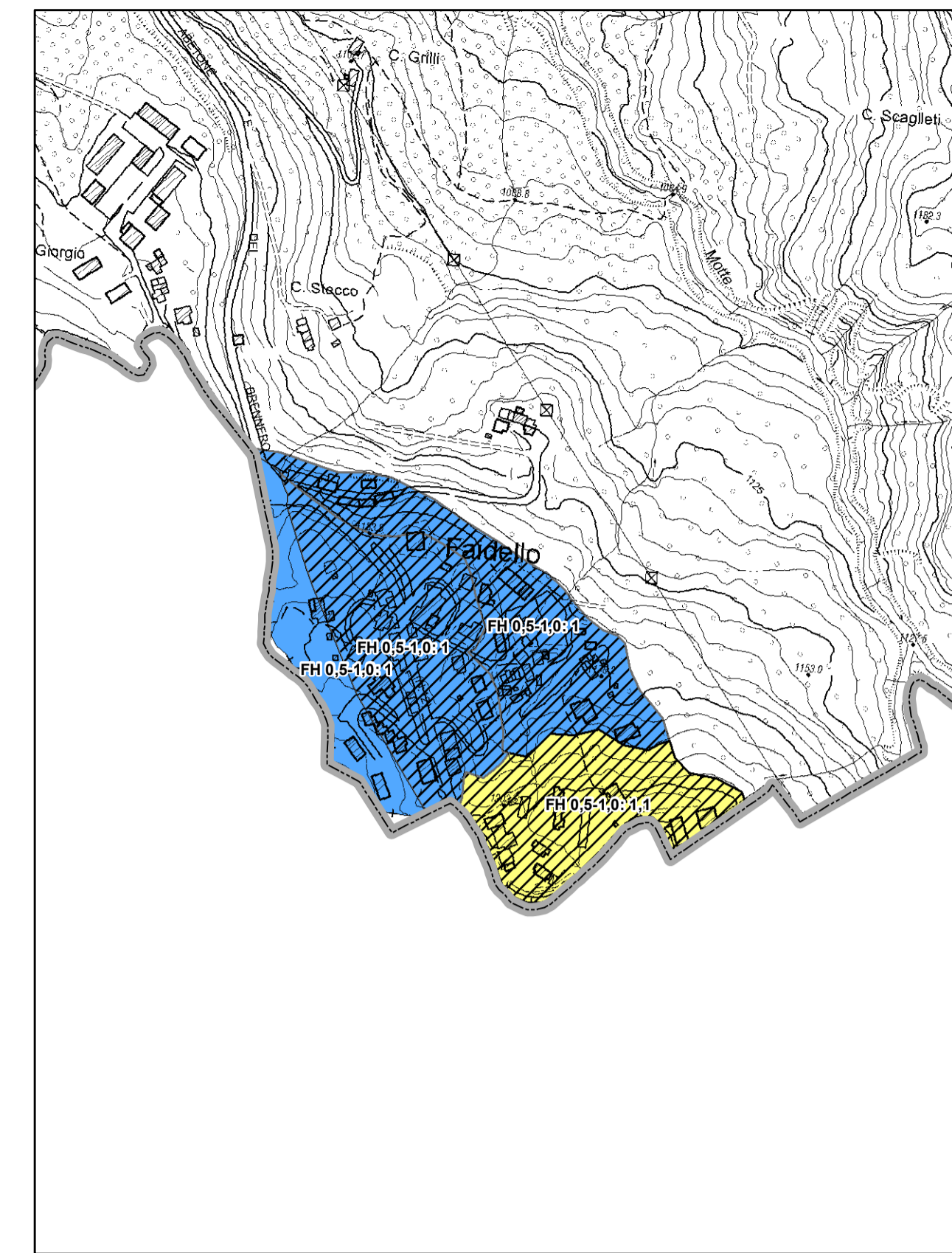
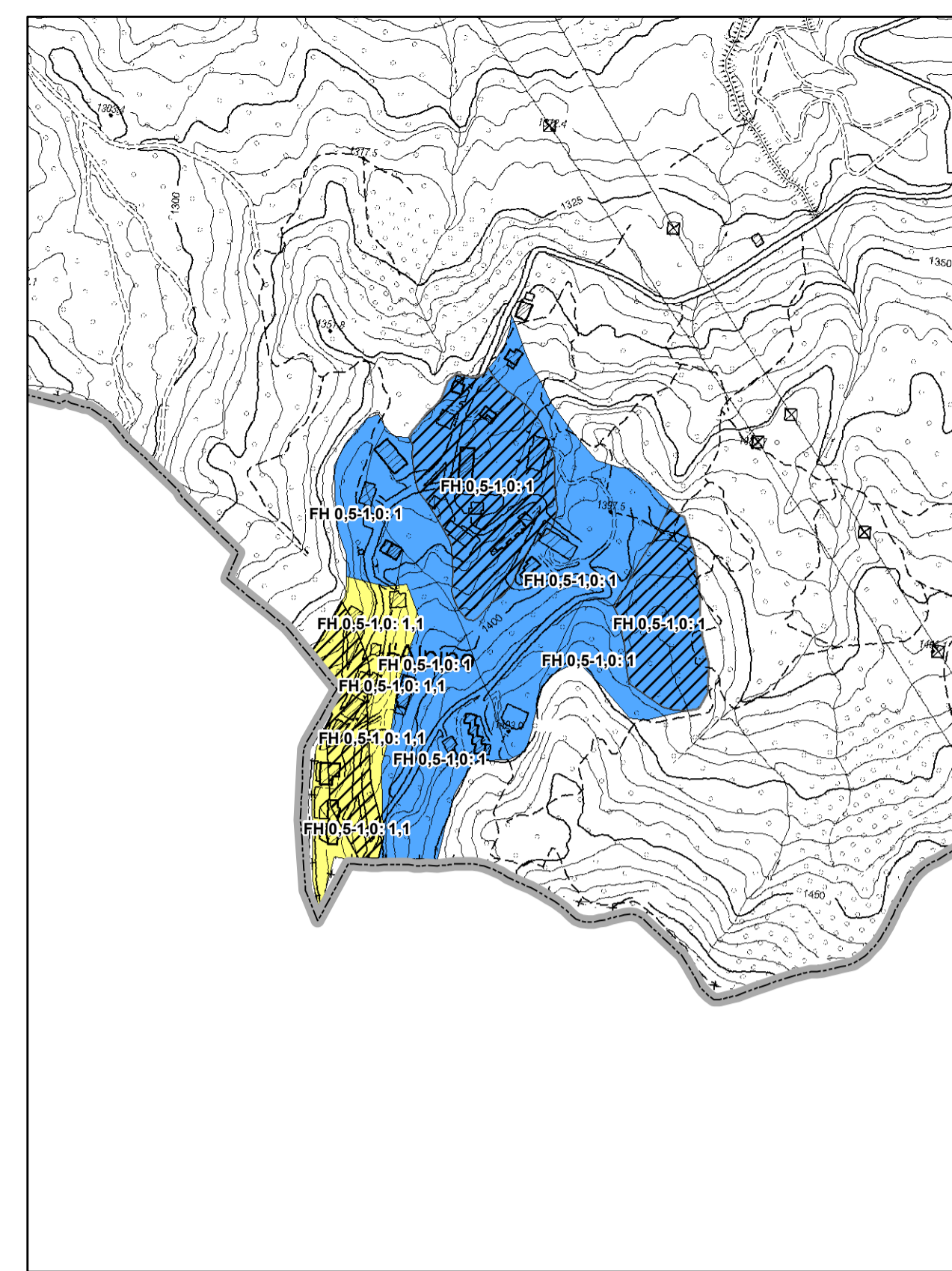
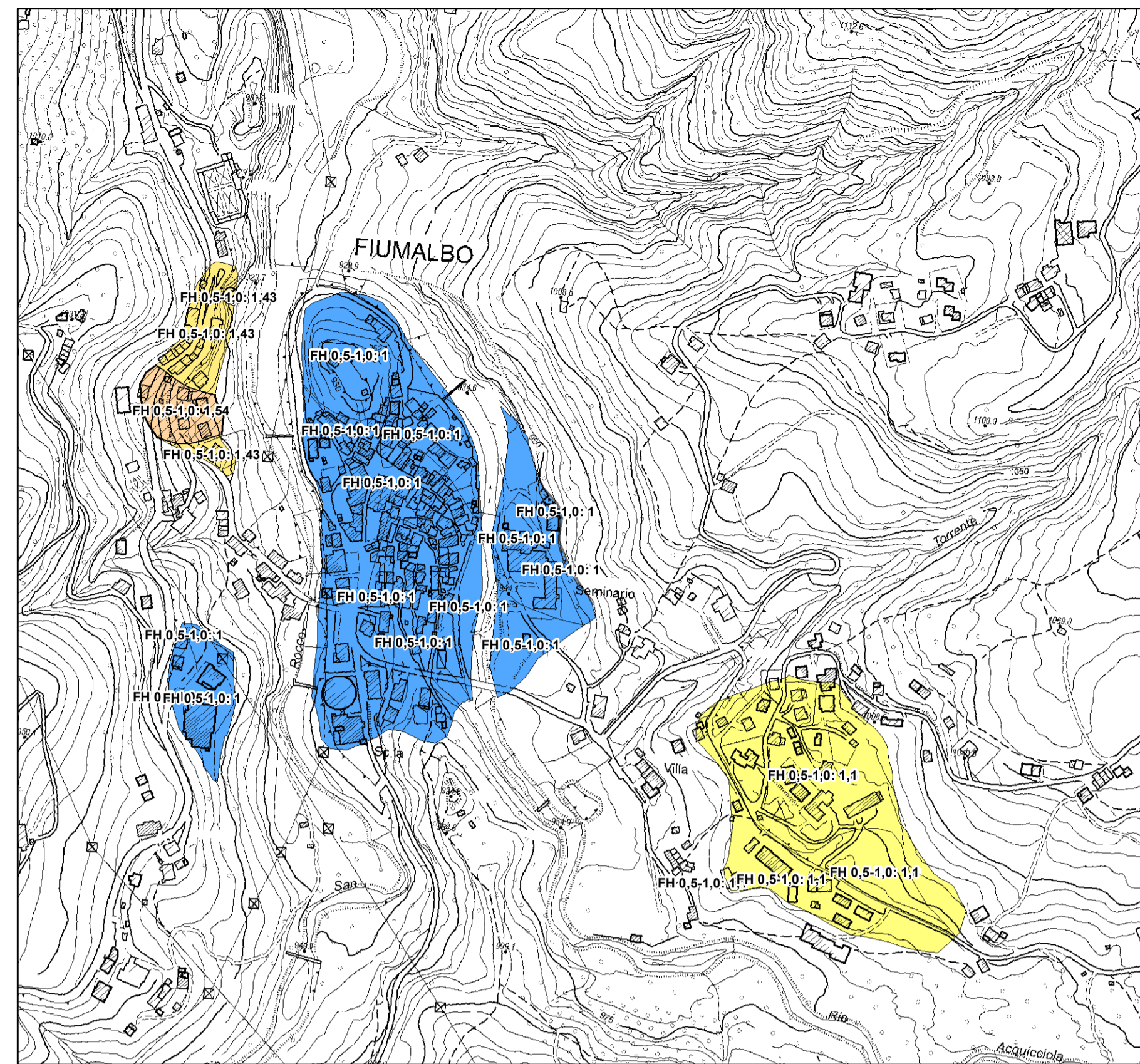
## Carta di microzonazione sismica livello 2

scala 1:5.000

Regione Emilia-Romagna  
Comune di Fiumalbo



Regione	Soggetto realizzatore	Data
Emilia Romagna	Studio Geologia Tecnica Dott. Geol. Lorenzo Del Maschio	Ottobre 2017
	Collaboratori Ing. Giorgia Tonioni Dott. Geol. Pierluigi Galli	



### Legenda

#### Zone stabili

FH 0,5-1,0: 1

#### Zone stabili suscettibili di amplificazioni locali

FH 0,5-1,0: 1,1-1,2  
 FH 0,5-1,0: 1,3-1,4

#### Zone di attenzione per instabilità di versante

FH 0,5-1,0: 1  
 FH 0,5-1,0: 1,1-1,2  
 FH 0,5-1,0: 1,3-1,4  
 FH 0,5-1,0: 1,5-1,6

0 62,5 125 250 Metri

Limite comunale

