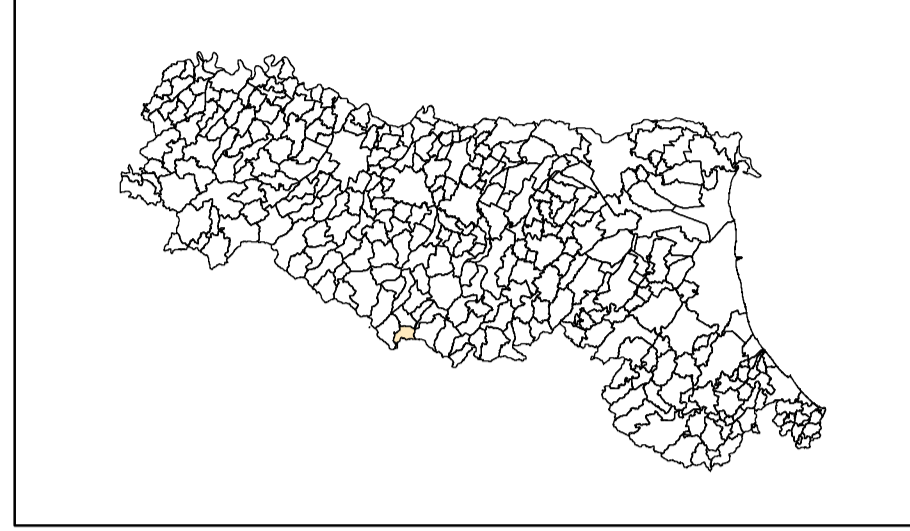


# MICROZONAZIONE SISMICA

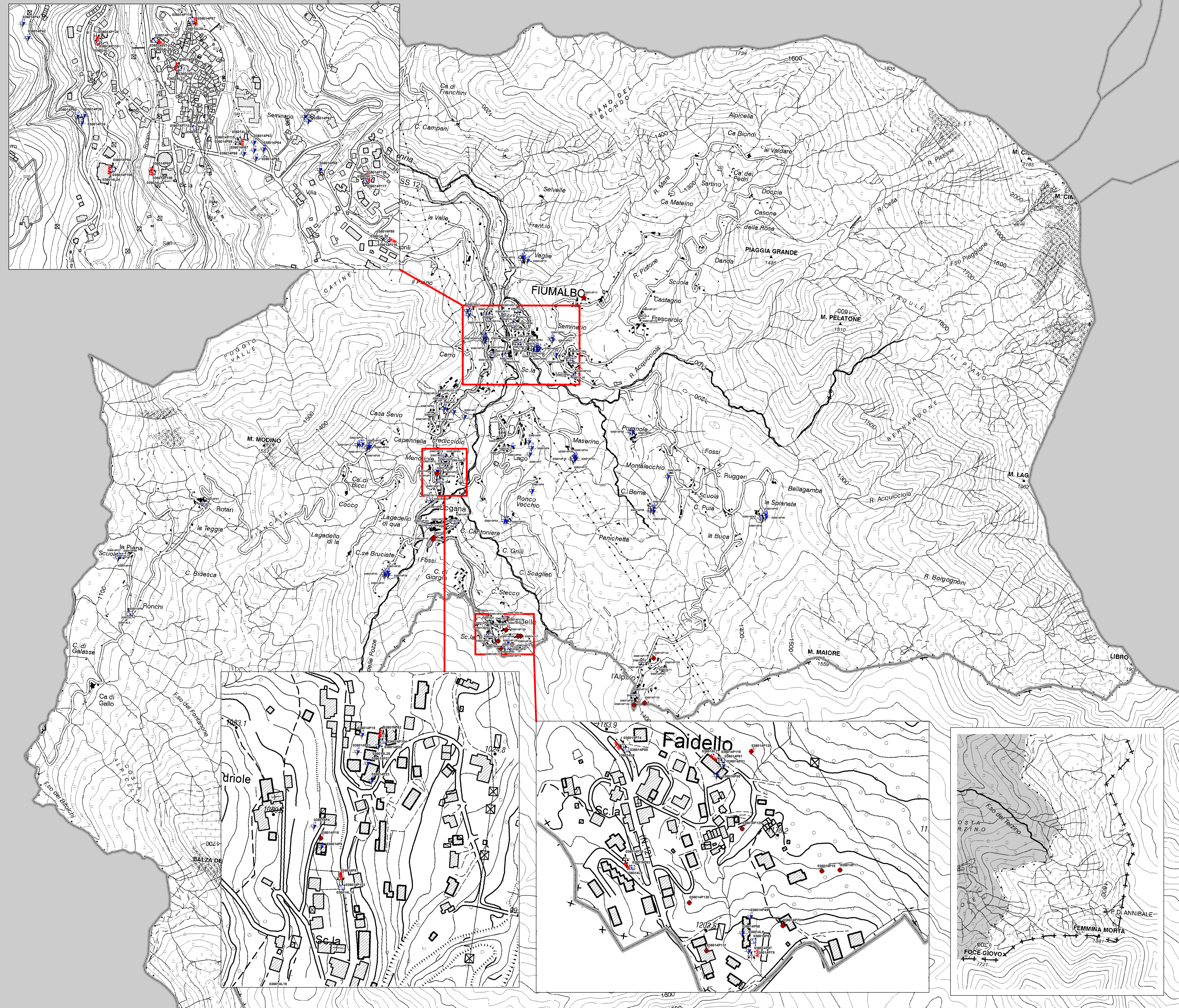
## Carta delle indagini

scala 1:10.000








Regione Emilia-Romagna  
Comune di Fiumalbo



Regione	Soggetto realizzatore	Data
Emilia Romagna	Studio Geologia Tecnica Dott. Geol. Lorenzo Del Maschio	Ottobre 2017
Collaboratori Ing. Giorgia Tonioni Dott. Geol. Pierluigi Galli		



### Legenda

-  Sondaggio a carotaggio continuo
-  Sondaggio a carotaggio continuo che interessa il substrato
-  Prova penetrometrica dinamica super pesante
-  Prova penetrometrica dinamica media
-  Prova penetrometrica dinamica leggera
-  Stazione microtremore a stazione singola
-  Array sismico, ESAC/SPAC
-  FTN
-  MASW
-  Prova RefractionMicrotremor

