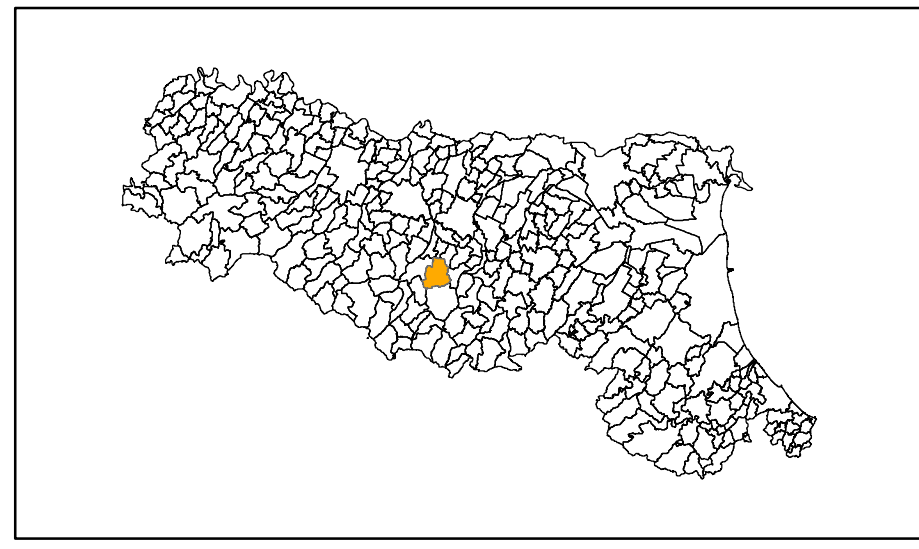


MICROZONAZIONE SISMICA

Carta di microzonazione sismica Livello 2

scala 1:5.000

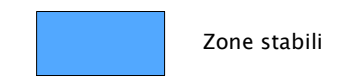
Regione Emilia-Romagna
Comune di Serramazzoni



Regione	Soggetto realizzatore	Data
Emilia Romagna	Studio Geologia Tecnica Dott. Geol. Lorenzo Del Maschio Ing. Giorgia Tonioni	Agosto 2015

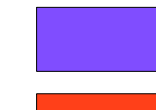

Legenda

Zone stabili

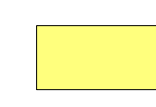










Zone stabili

Zone suscettibili di instabilità

-  ZAFR.A - Zona di attenzione per instabilità di versante attivo
-  ZAFR.Q - Zona di attenzione per instabilità di versante quiescente

Zone stabili suscettibili di amplificazioni locali

-  FPGC = 1.1 - 1.2
-  FPGC = 1.3 - 1.4
-  FPGC = 1.5 - 1.6
-  FPGC = 1.7 - 1.8
-  FPGC = 1.9 - 2.0
-  FPGC = 2.1 - 2.2
-  FPGC = 2.3 - 2.4
-  FPGC = 2.5

 Area di amplificazione topografica

 Finestra di studio

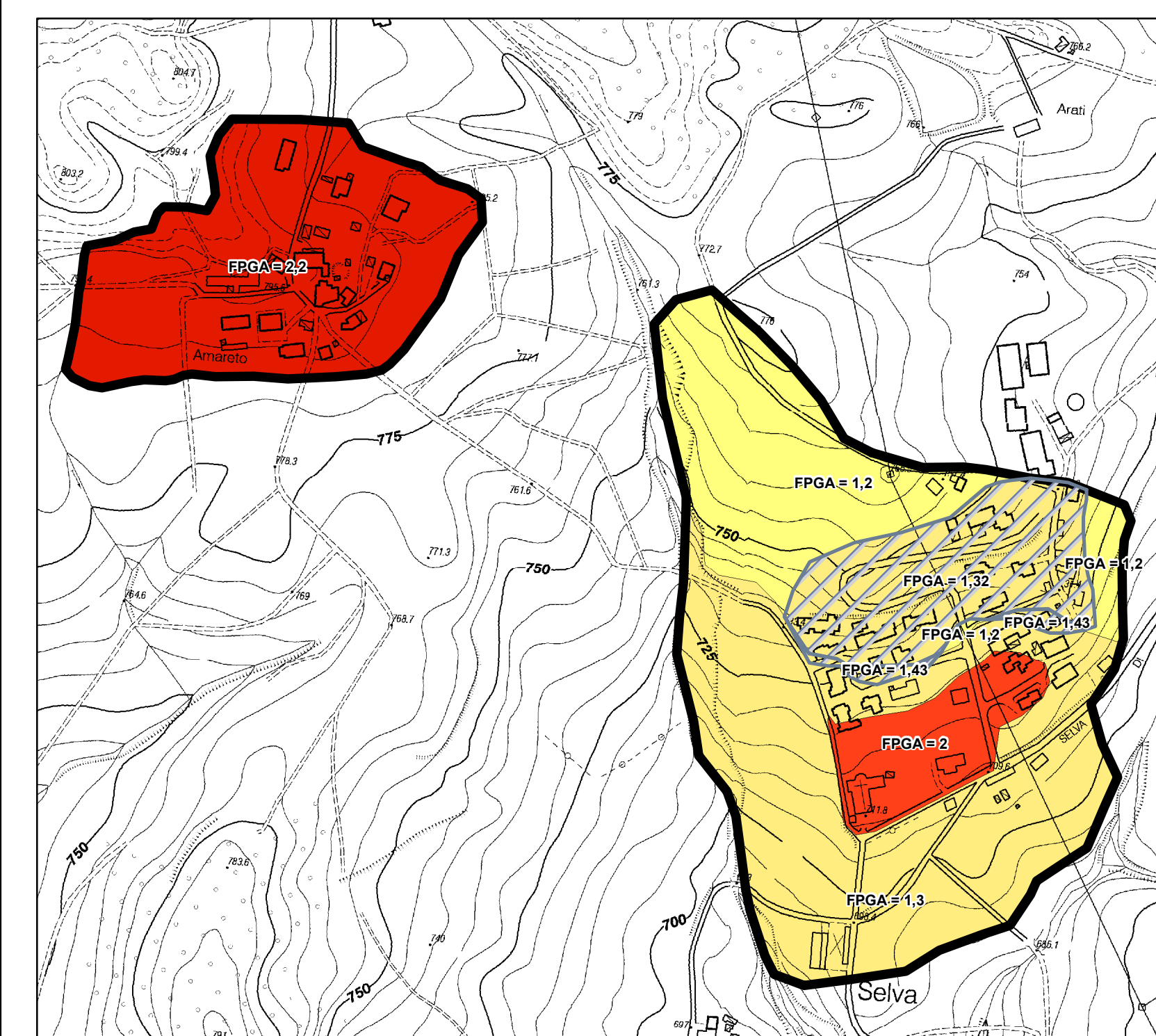
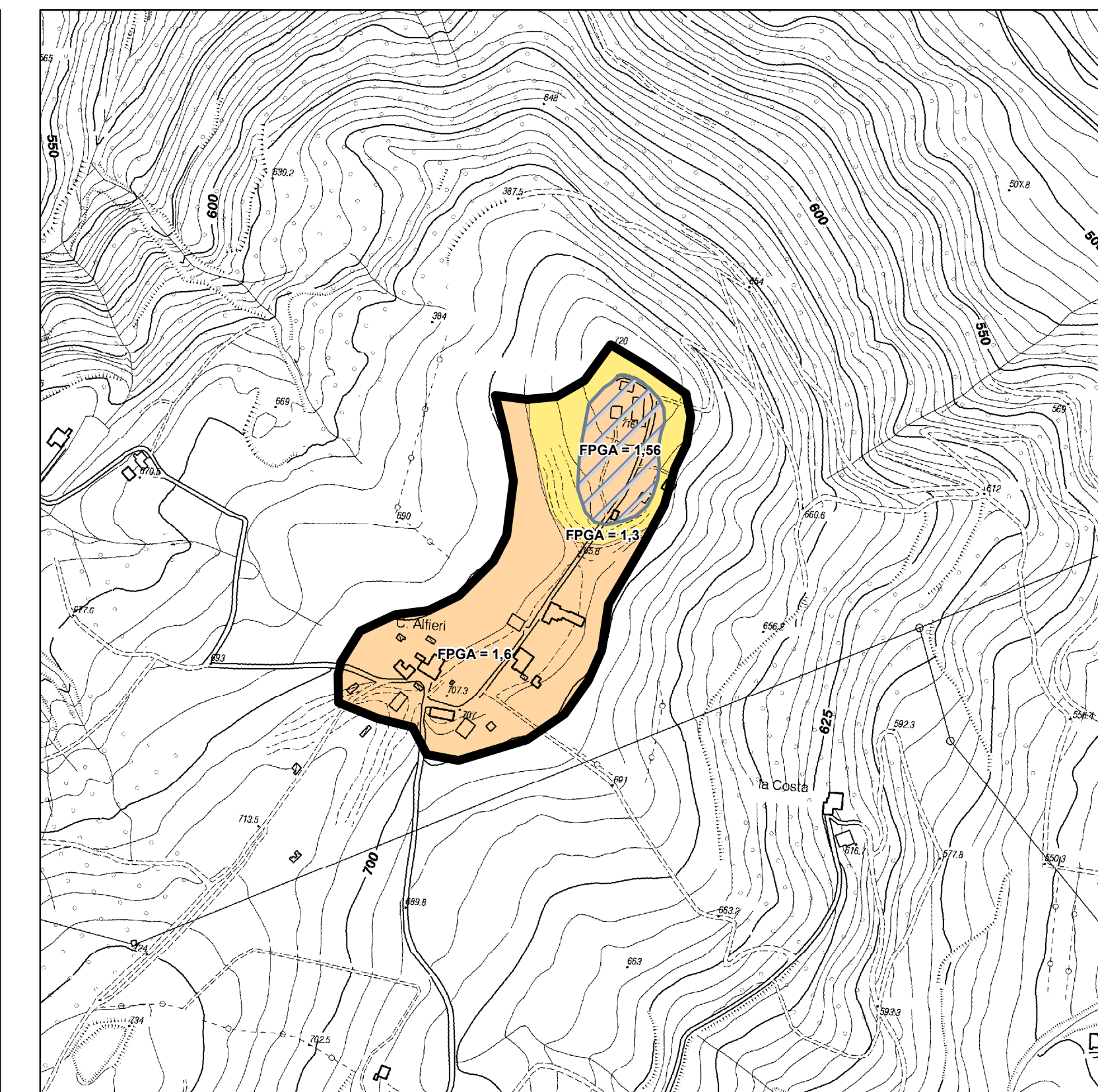
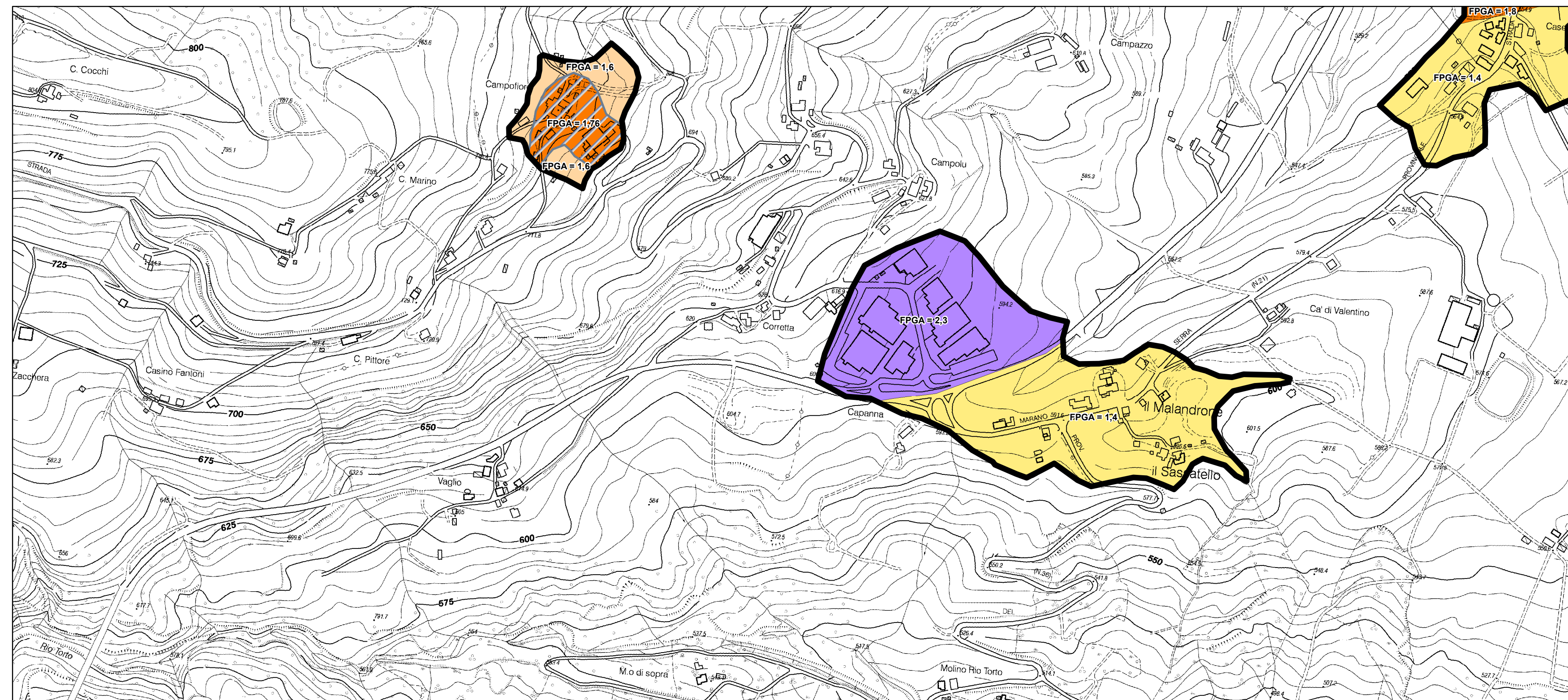
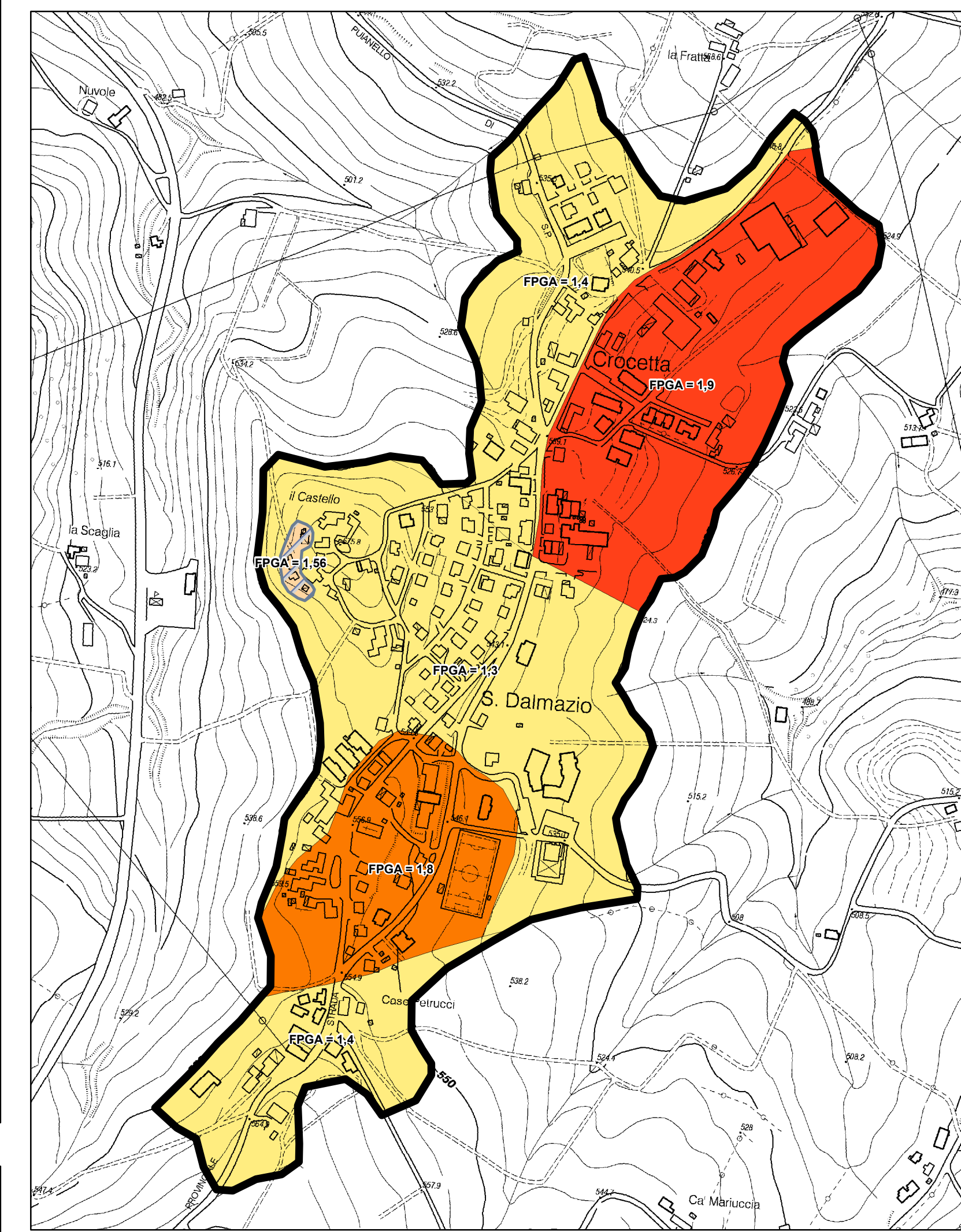
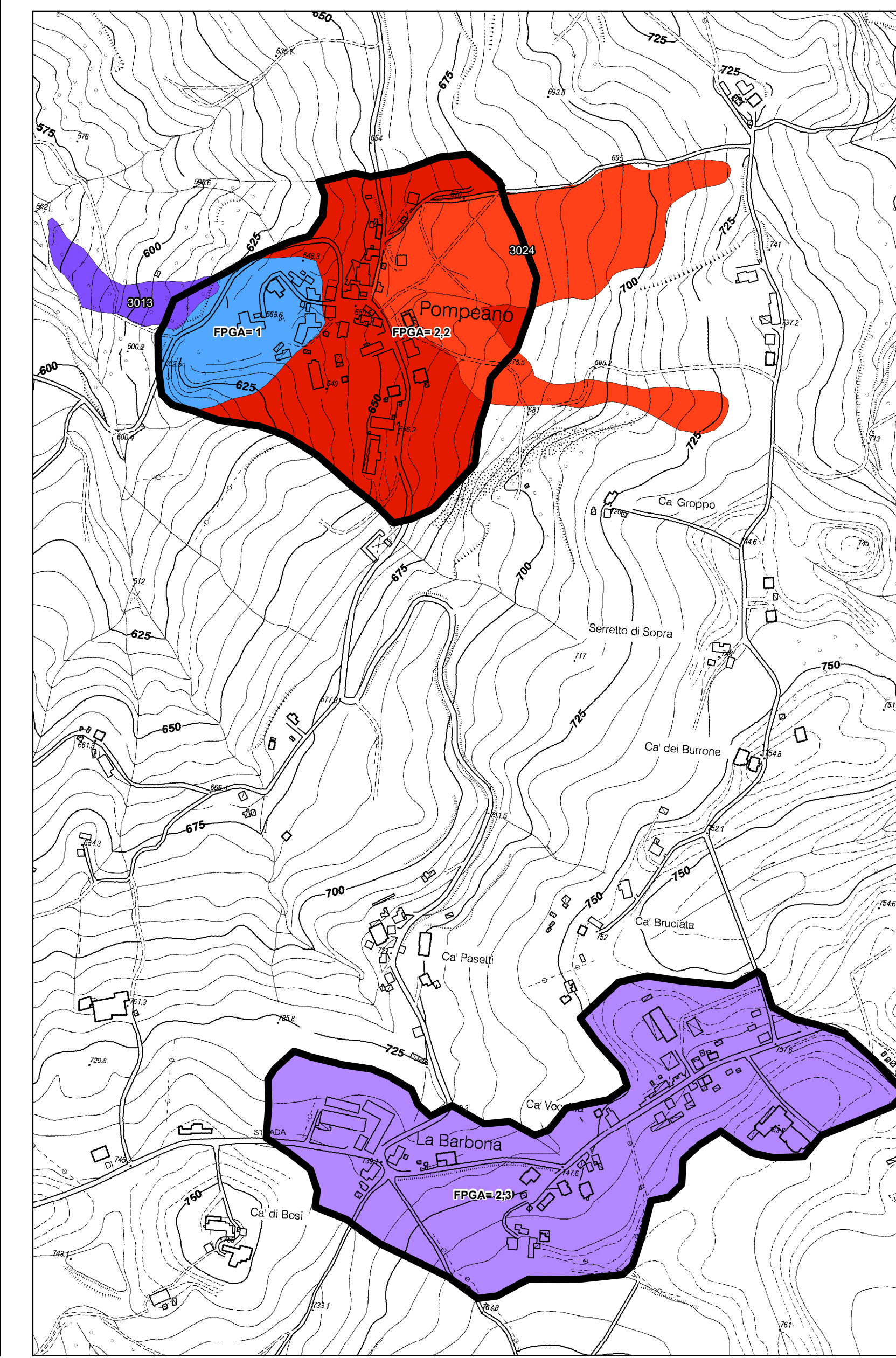
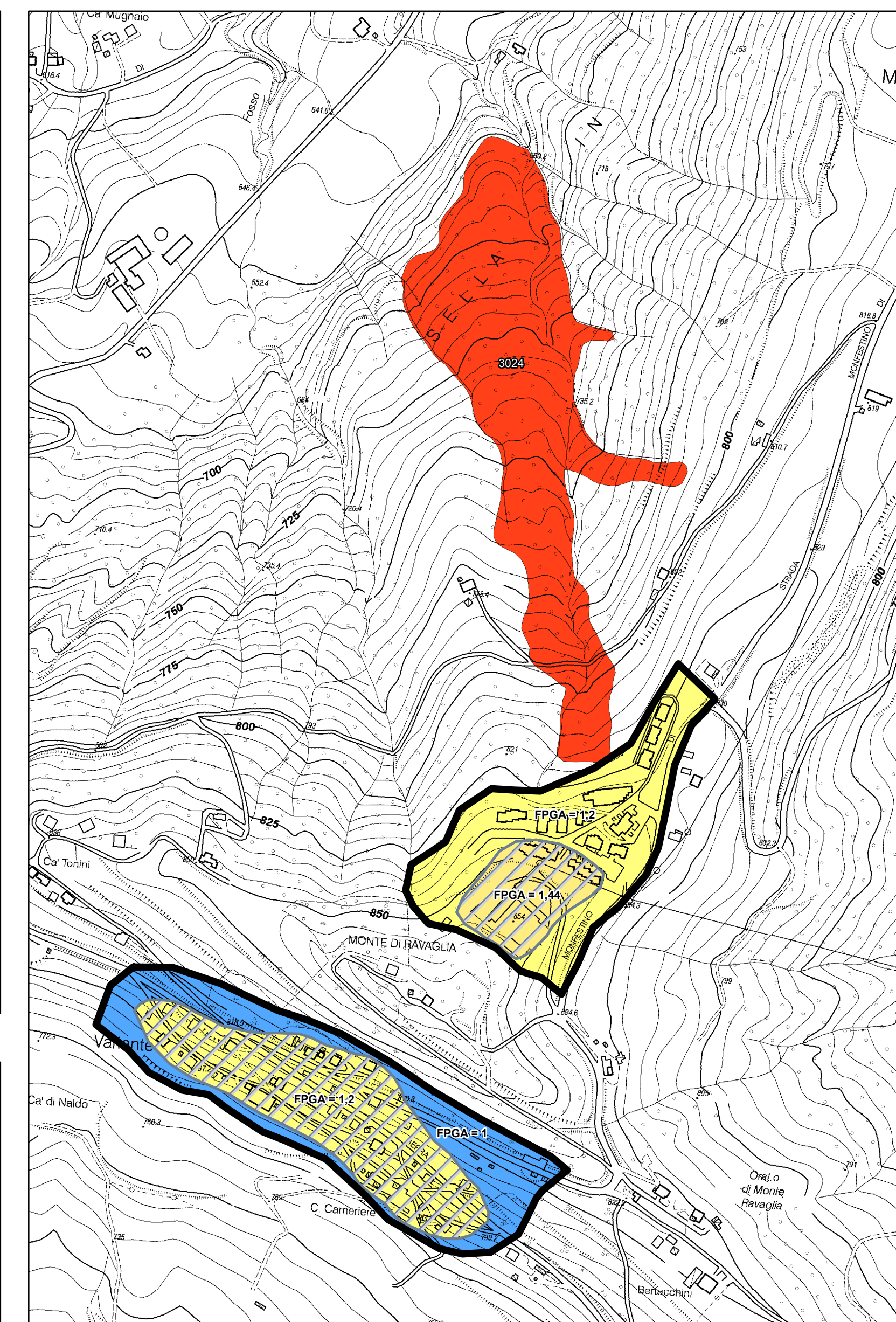
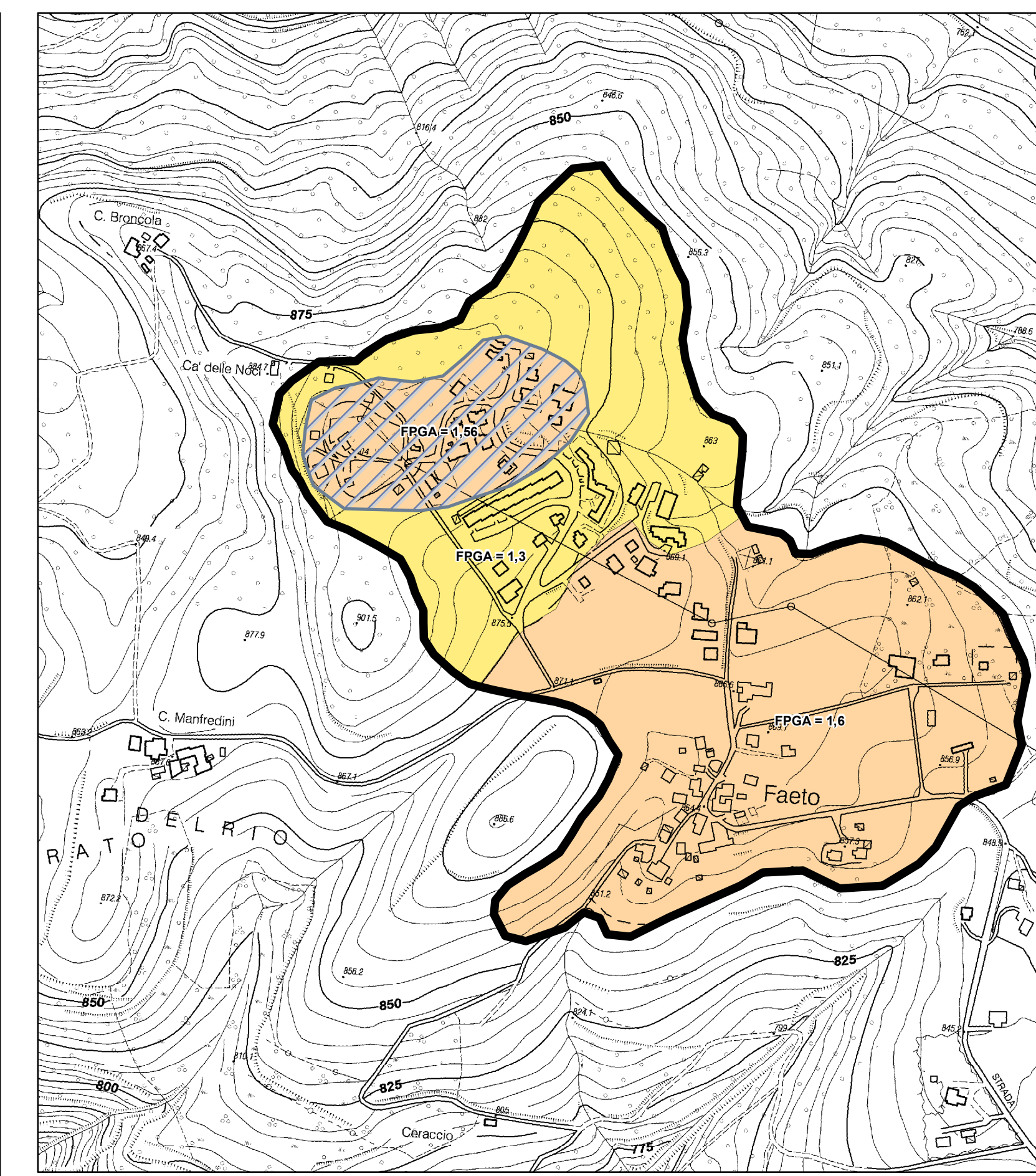
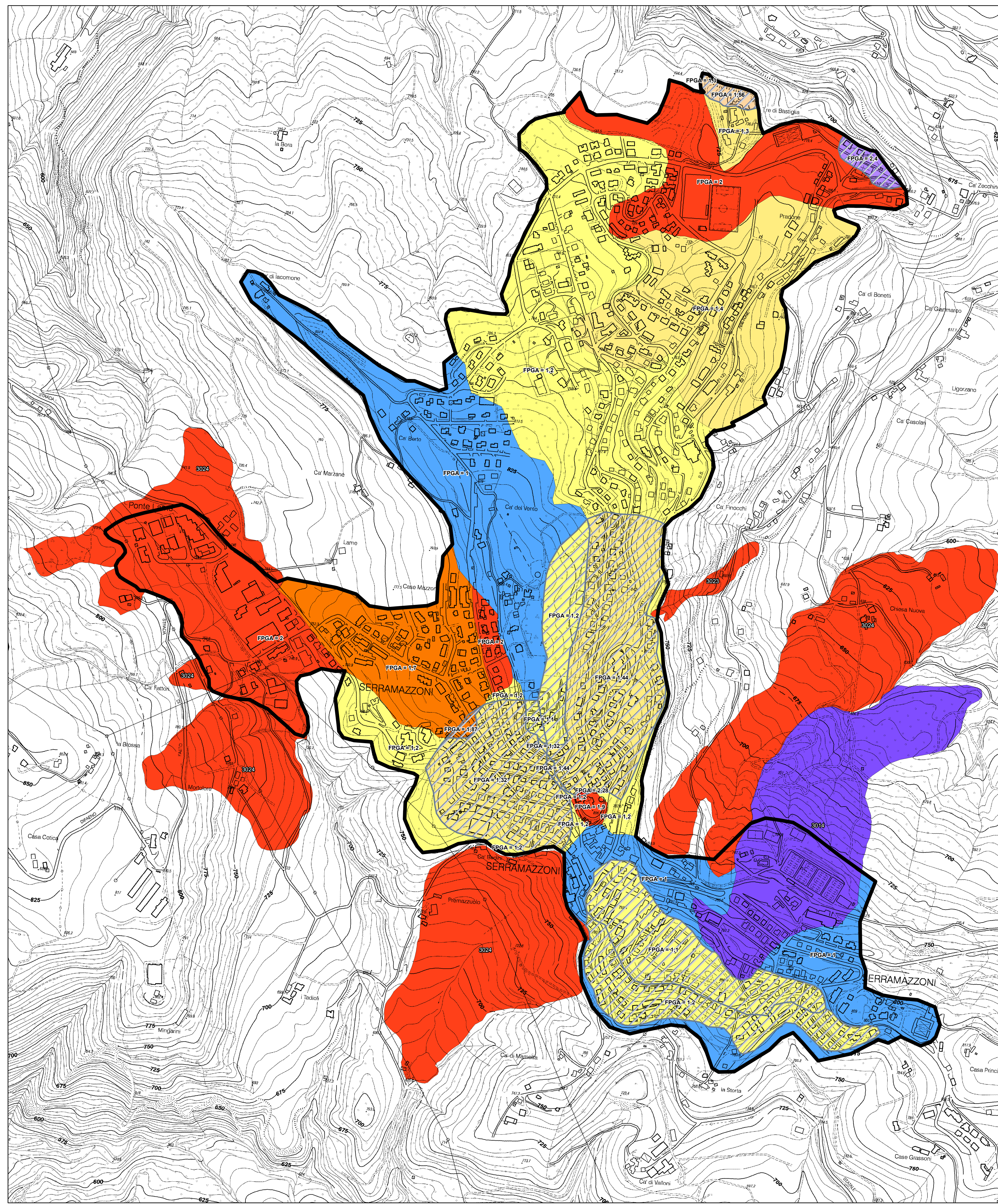


TAVOLA 2 DI 2

