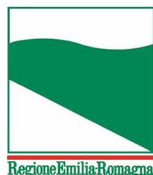




PROTEZIONE CIVILE
Presidenza del Consiglio dei Ministri
Dipartimento della Protezione Civile



Attuazione dell'articolo 11 dalla legge 24 giugno 2009, n.77

MICROZONAZIONE SISMICA

Livello 2

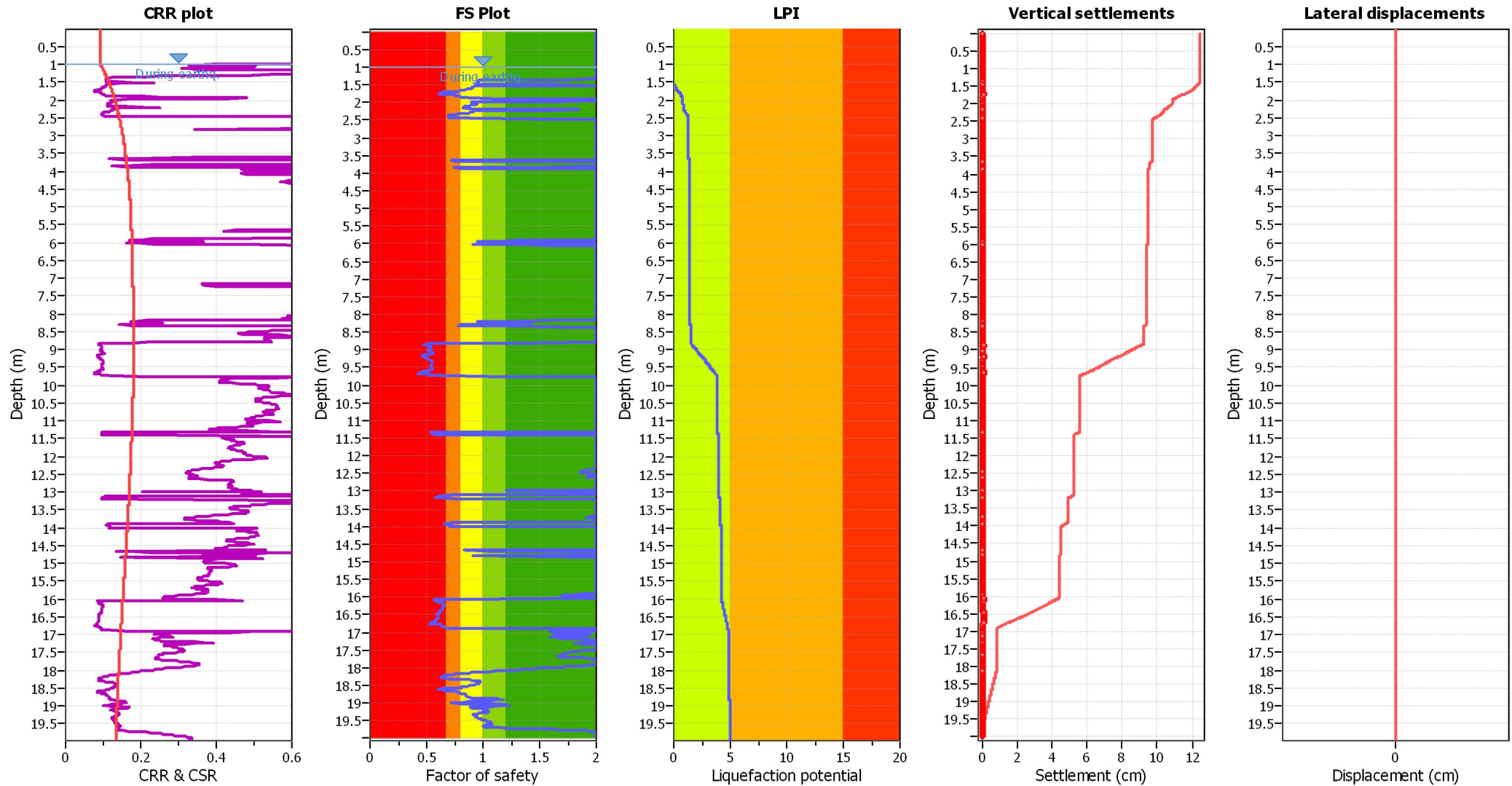
Regione Emilia-Romagna
Comune di Anzola dell'Emilia



Allegato 3 – Rapporti di calcolo per la stima
degli indici di liquefazione

Regione	Soggetto realizzatore	Data
Emilia-Romagna	Studio di geologia Gabriele Tarabusi	15/12/2014

Liquefaction analysis overall plots



Input parameters and analysis data

Analysis method:	Robertson (2009)	Depth to water table (erthq.):	1.00 m	Fill weight:	N/A
Fines correction method:	Robertson (2009)	Average results interval:	3	Transition detect. applied:	No
Points to test:	Based on Ic value	Ic cut-off value:	2.60	K _σ applied:	No
Earthquake magnitude M _w :	6.14	Unit weight calculation:	Based on SBT	Clay like behavior applied:	All soils
Peak ground acceleration:	0.24	Use fill:	No	Limit depth applied:	No
Depth to water table (insitu):	1.00 m	Fill height:	N/A	Limit depth:	N/A

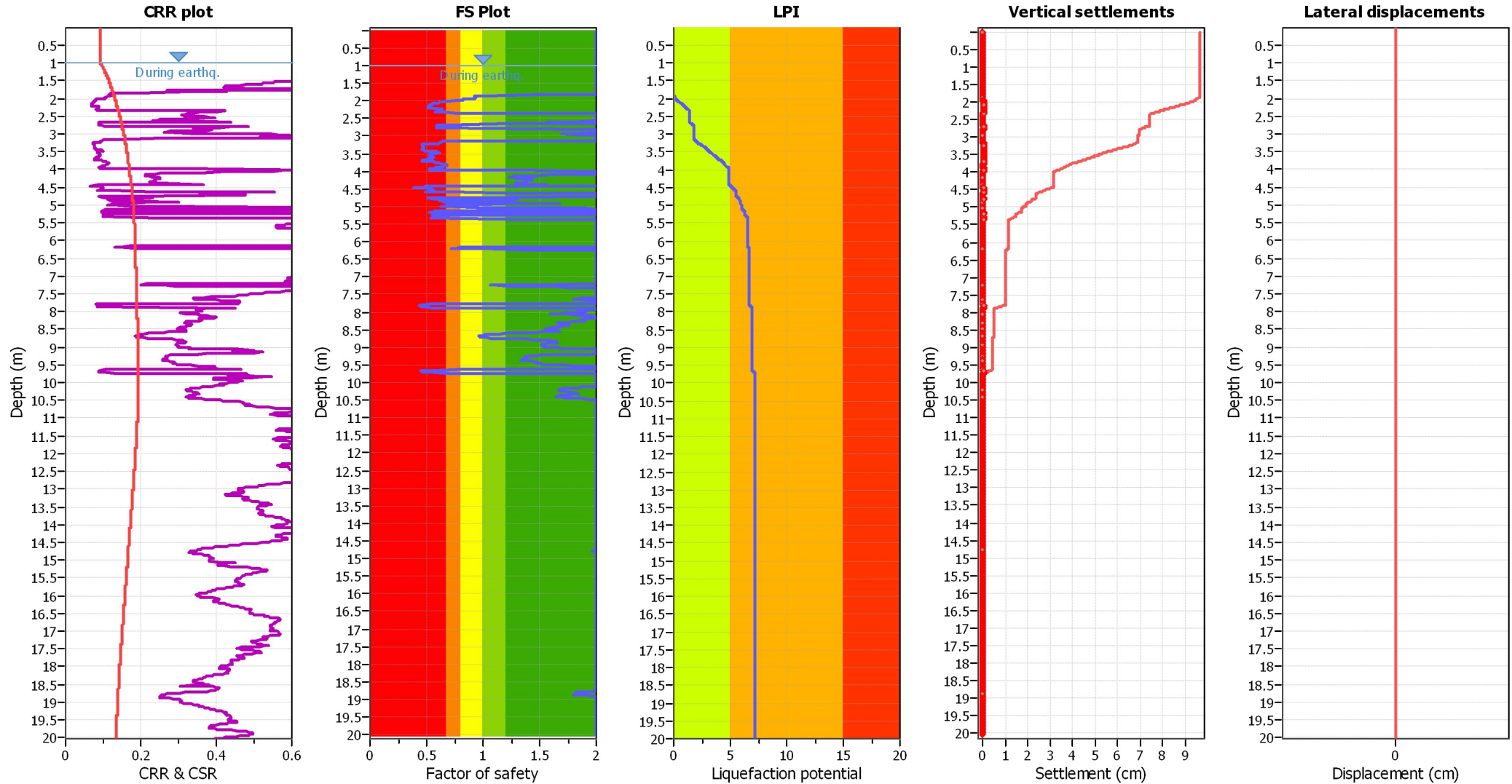
F.S. color scheme

- Almost certain it will liquefy
- Very likely to liquefy
- Liquefaction and no liq. are equally likely
- Unlike to liquefy
- Almost certain it will not liquefy

LPI color scheme

- Very high risk
- High risk
- Low risk

Liquefaction analysis overall plots



Input parameters and analysis data

Analysis method:	Robertson (2009)	Depth to water table (erthq.):	1.00 m	Fill weight:	N/A
Fines correction method:	Robertson (2009)	Average results interval:	3	Transition detect. applied:	No
Points to test:	Based on Ic value	Ic cut-off value:	2.60	K _σ applied:	No
Earthquake magnitude M _w :	6.14	Unit weight calculation:	Based on SBT	Clay like behavior applied:	All soils
Peak ground acceleration:	0.24	Use fill:	No	Limit depth applied:	No
Depth to water table (insitu):	1.00 m	Fill height:	N/A	Limit depth:	N/A

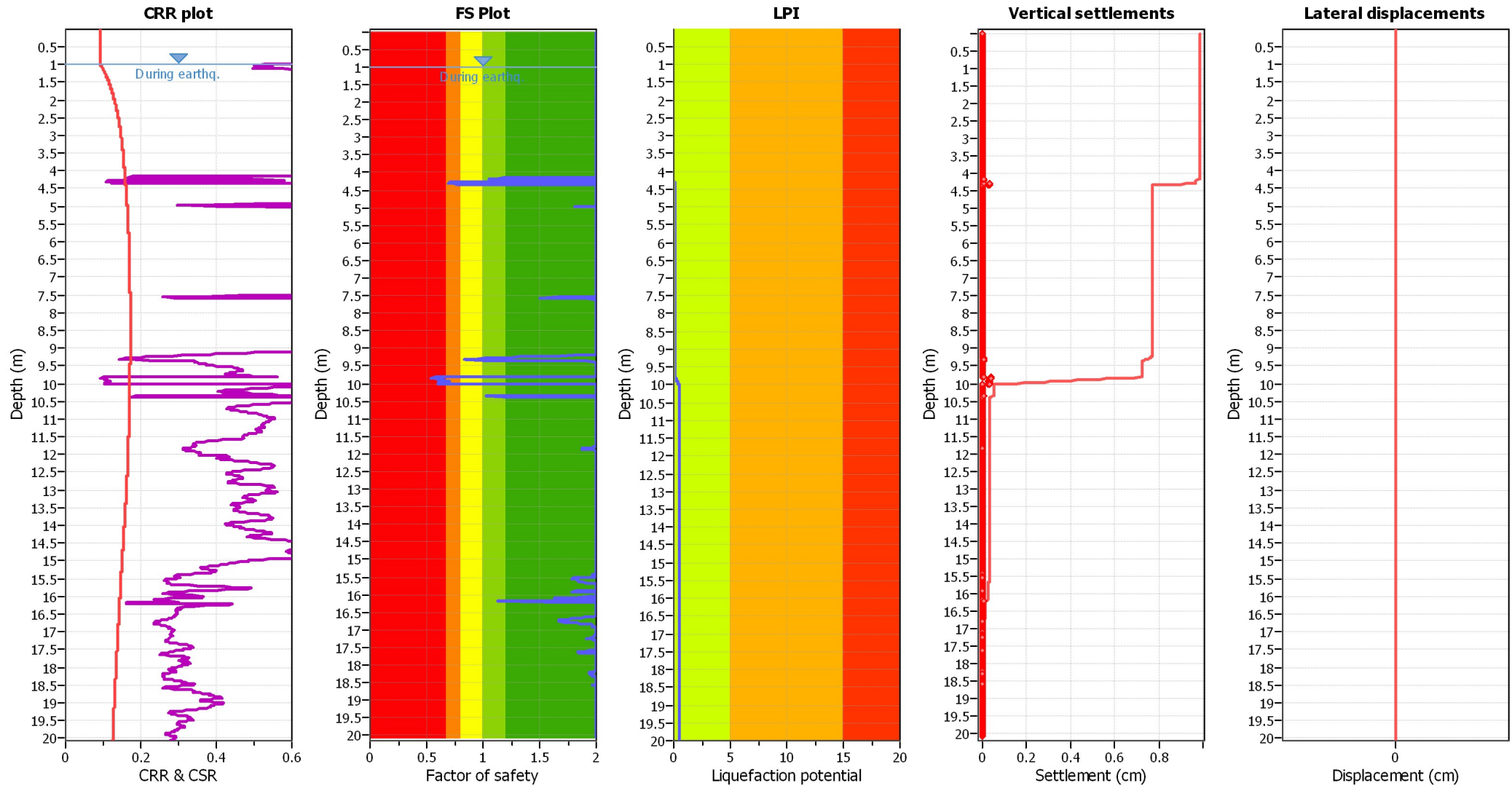
F.S. color scheme

- Almost certain it will liquefy
- Very likely to liquefy
- Liquefaction and no liq. are equally likely
- Unlike to liquefy
- Almost certain it will not liquefy

LPI color scheme

- Very high risk
- High risk
- Low risk

Liquefaction analysis overall plots



Input parameters and analysis data

Analysis method:	Robertson (2009)	Depth to water table (erthq.):	1.00 m	Fill weight:	N/A
Fines correction method:	Robertson (2009)	Average results interval:	3	Transition detect. applied:	No
Points to test:	Based on Ic value	Ic cut-off value:	2.60	K _σ applied:	No
Earthquake magnitude M _w :	6.14	Unit weight calculation:	Based on SBT	Clay like behavior applied:	All soils
Peak ground acceleration:	0.24	Use fill:	No	Limit depth applied:	No
Depth to water table (insitu):	1.00 m	Fill height:	N/A	Limit depth:	N/A

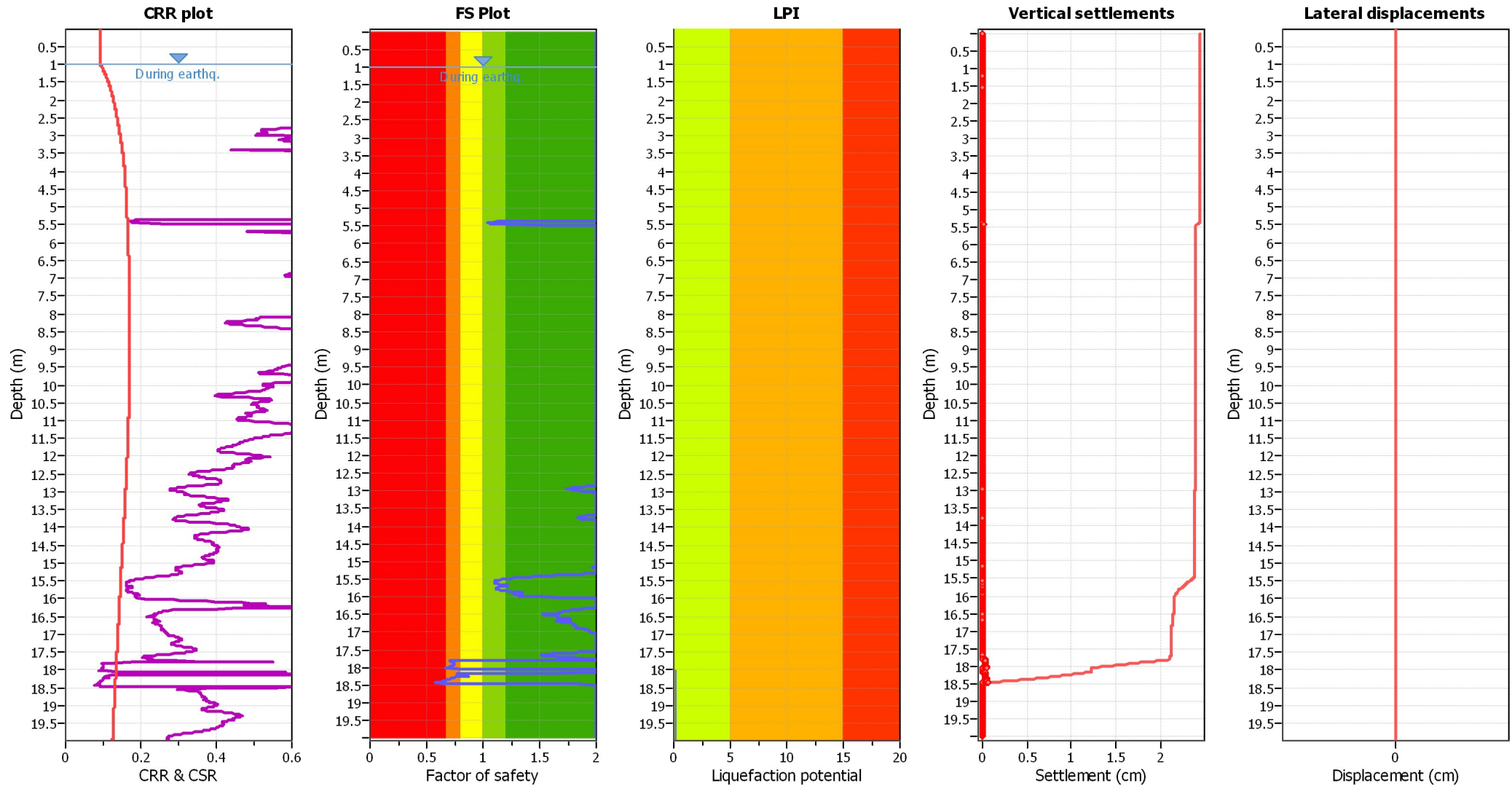
F.S. color scheme

- Almost certain it will liquefy
- Very likely to liquefy
- Liquefaction and no liq. are equally likely
- Unlike to liquefy
- Almost certain it will not liquefy

LPI color scheme

- Very high risk
- High risk
- Low risk

Liquefaction analysis overall plots



Input parameters and analysis data

Analysis method:	Robertson (2009)	Depth to water table (erthq.):	1.00 m	Fill weight:	N/A
Fines correction method:	Robertson (2009)	Average results interval:	3	Transition detect. applied:	No
Points to test:	Based on Ic value	Ic cut-off value:	2.60	K _σ applied:	No
Earthquake magnitude M _w :	6.14	Unit weight calculation:	Based on SBT	Clay like behavior applied:	All soils
Peak ground acceleration:	0.24	Use fill:	No	Limit depth applied:	No
Depth to water table (insitu):	1.00 m	Fill height:	N/A	Limit depth:	N/A

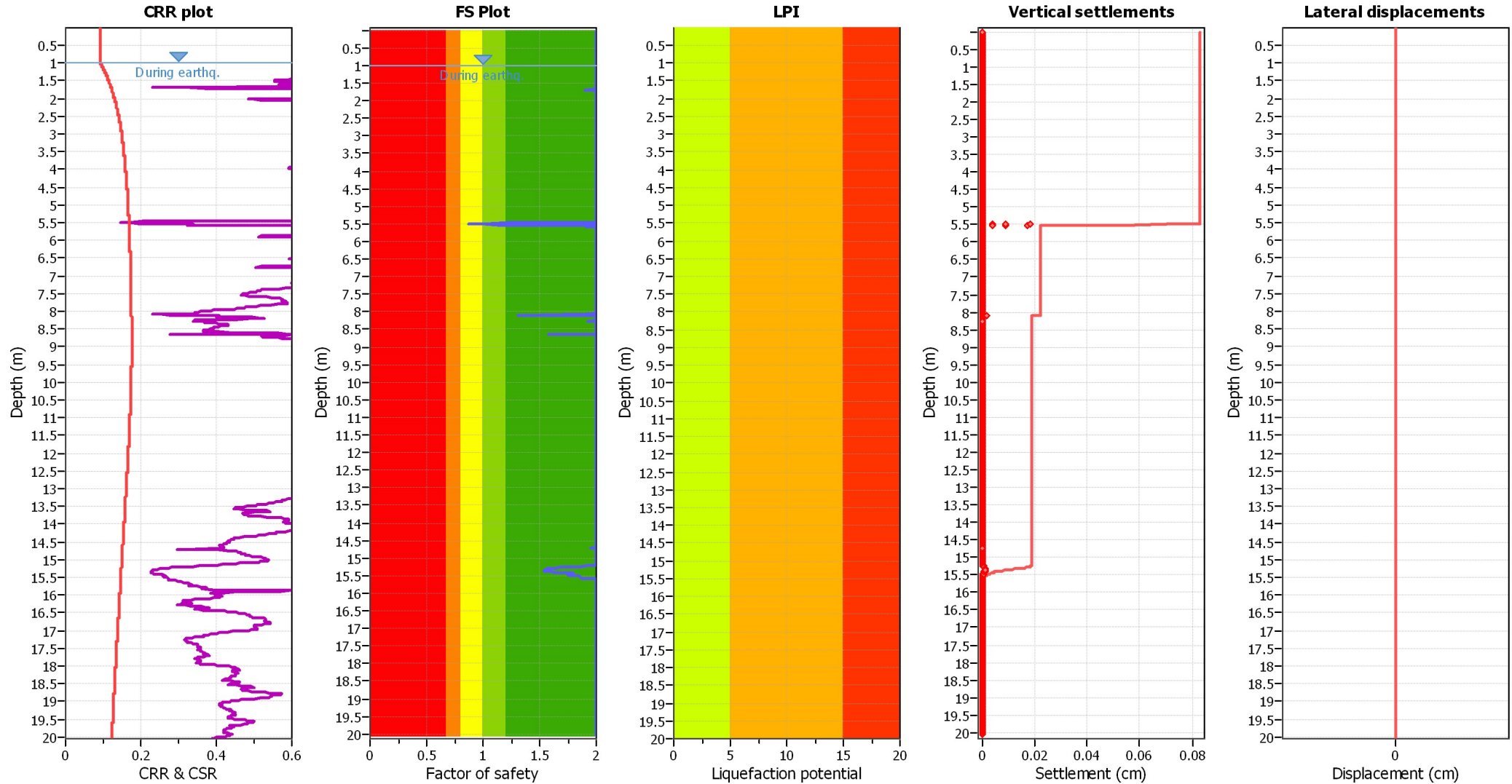
F.S. color scheme

- Almost certain it will liquefy
- Very likely to liquefy
- Liquefaction and no liq. are equally likely
- Unlike to liquefy
- Almost certain it will not liquefy

LPI color scheme

- Very high risk
- High risk
- Low risk

Liquefaction analysis overall plots



Input parameters and analysis data

Analysis method:	Robertson (2009)	Depth to water table (erthq.):	1.00 m	Fill weight:	N/A
Fines correction method:	Robertson (2009)	Average results interval:	3	Transition detect. applied:	No
Points to test:	Based on Ic value	Ic cut-off value:	2.60	K _σ applied:	No
Earthquake magnitude M _w :	6.14	Unit weight calculation:	Based on SBT	Clay like behavior applied:	All soils
Peak ground acceleration:	0.24	Use fill:	No	Limit depth applied:	No
Depth to water table (insitu):	1.00 m	Fill height:	N/A	Limit depth:	N/A

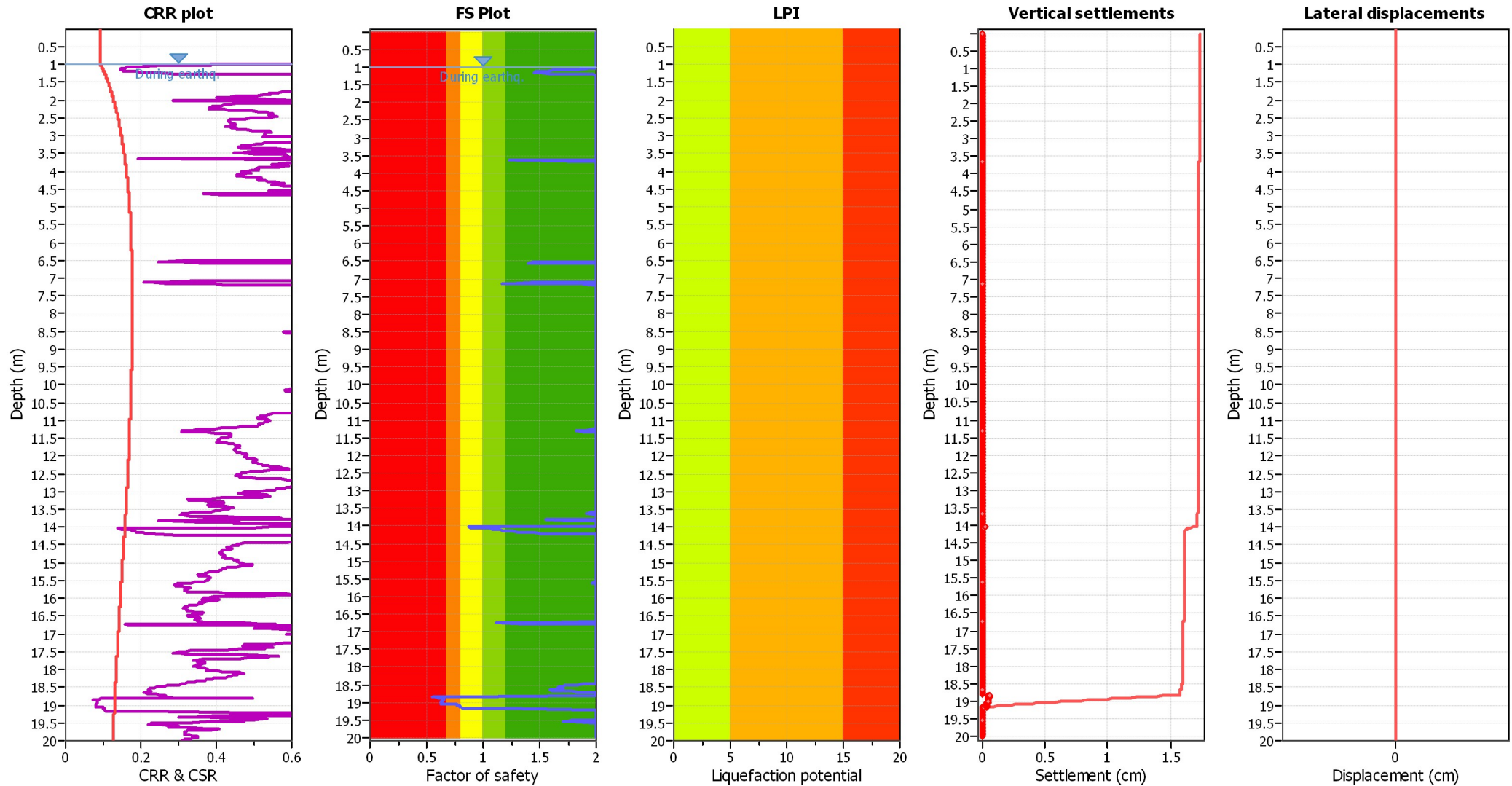
F.S. color scheme

- Almost certain it will liquefy
- Very likely to liquefy
- Liquefaction and no liq. are equally likely
- Unlike to liquefy
- Almost certain it will not liquefy

LPI color scheme

- Very high risk
- High risk
- Low risk

Liquefaction analysis overall plots



Input parameters and analysis data

Analysis method:	Robertson (2009)	Depth to water table (erthq.):	1.00 m	Fill weight:	N/A
Fines correction method:	Robertson (2009)	Average results interval:	3	Transition detect. applied:	No
Points to test:	Based on Ic value	Ic cut-off value:	2.60	K _σ applied:	No
Earthquake magnitude M _w :	6.14	Unit weight calculation:	Based on SBT	Clay like behavior applied:	All soils
Peak ground acceleration:	0.24	Use fill:	No	Limit depth applied:	No
Depth to water table (insitu):	1.00 m	Fill height:	N/A	Limit depth:	N/A

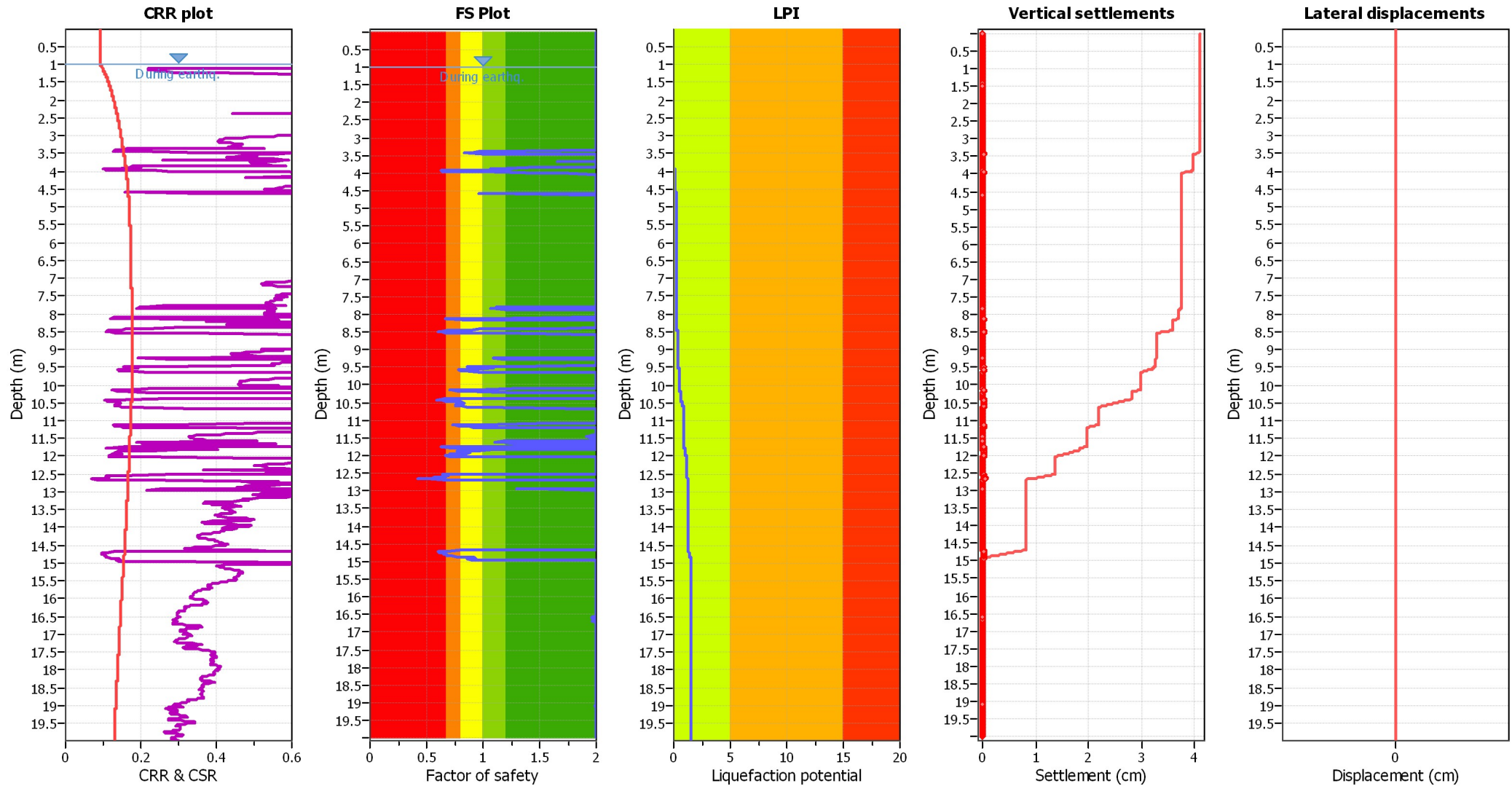
F.S. color scheme

- Almost certain it will liquefy
- Very likely to liquefy
- Liquefaction and no liq. are equally likely
- Unlike to liquefy
- Almost certain it will not liquefy

LPI color scheme

- Very high risk
- High risk
- Low risk

Liquefaction analysis overall plots



Input parameters and analysis data

Analysis method:	Robertson (2009)	Depth to water table (erthq.):	1.00 m	Fill weight:	N/A
Fines correction method:	Robertson (2009)	Average results interval:	3	Transition detect. applied:	No
Points to test:	Based on Ic value	Ic cut-off value:	2.60	K _σ applied:	No
Earthquake magnitude M _w :	6.14	Unit weight calculation:	Based on SBT	Clay like behavior applied:	All soils
Peak ground acceleration:	0.24	Use fill:	No	Limit depth applied:	No
Depth to water table (insitu):	1.00 m	Fill height:	N/A	Limit depth:	N/A

F.S. color scheme

- Almost certain it will liquefy
- Very likely to liquefy
- Liquefaction and no liq. are equally likely
- Unlike to liquefy
- Almost certain it will not liquefy

LPI color scheme

- Very high risk
- High risk
- Low risk