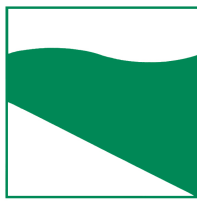




PROTEZIONE CIVILE
Presidenza del Consiglio dei Ministri
Dipartimento della Protezione Civile



Regione Emilia-Romagna



CONFERENZA DELLE REGIONI E
DELLE PROVINCE AUTONOME

Attuazione dell'articolo 11 dalla legge 24 giugno 2009, n.77

MICROZONAZIONE SISMICA

Livello 2

Allegato 2 – Sezioni topografiche

Regione Emilia–Romagna

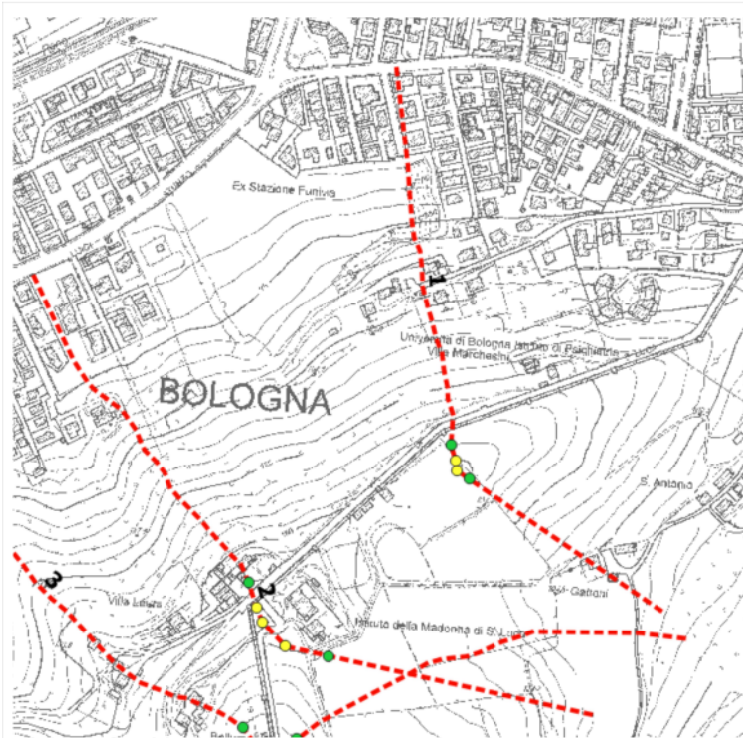
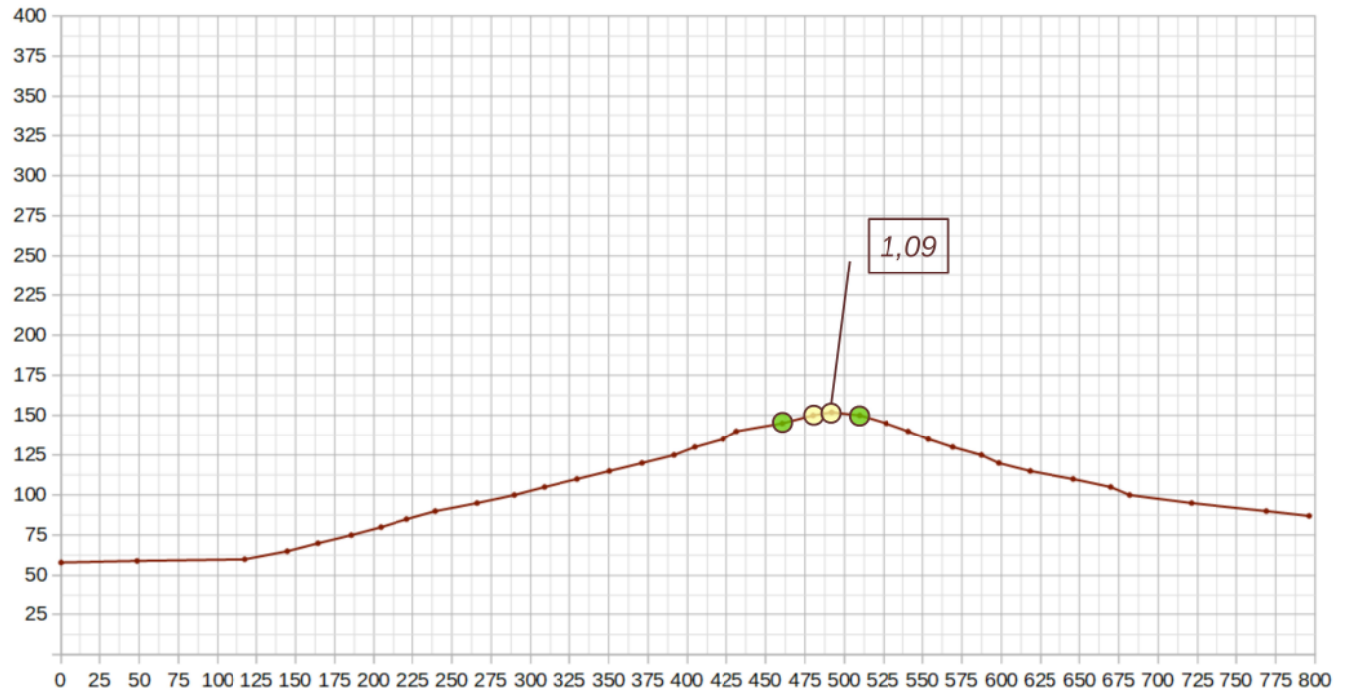
Comune di Bologna



Regione	Soggetto realizzatore	Data
EMILIA–ROMAGNA	Raggruppamento temporaneo di professionisti Capogruppo: dott. geol. Samuel Sangiorgi Mandante: ing. Marco Soglia	Gennaio 2020

SEZIONE TOPOGRAFICA 1 - BOLOGNA

- ST = 1,0
- ST = 1,1
- ST = 1,2
- ST = 1,3
- ST = 1,4

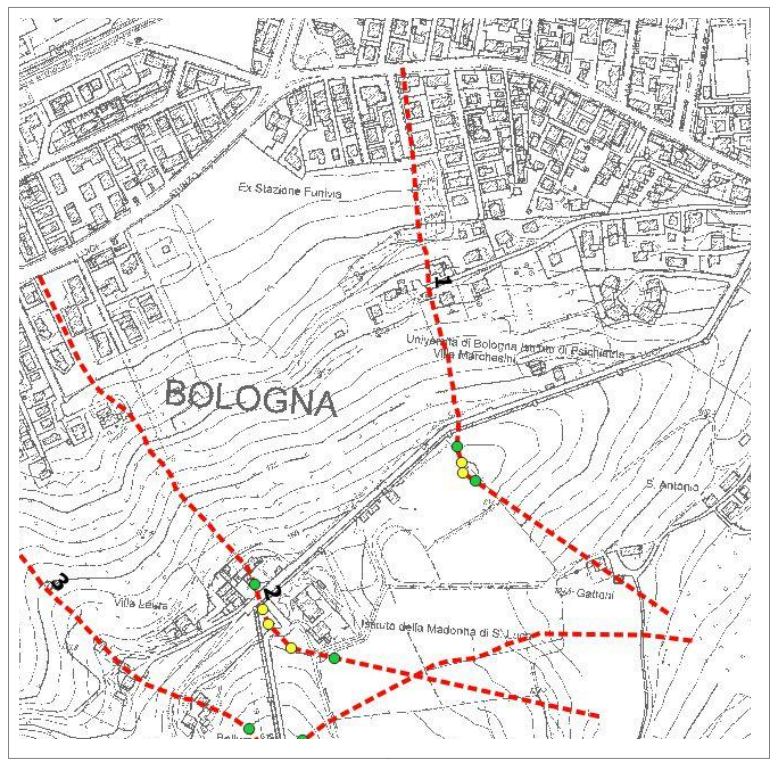
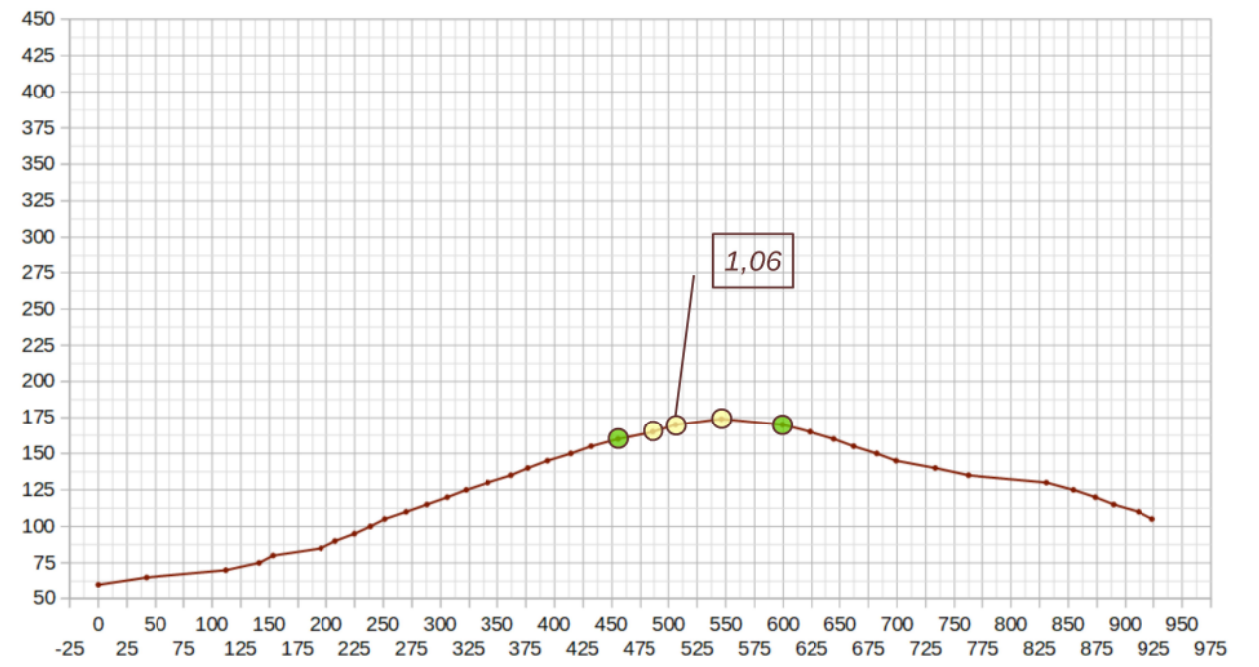


Atezza del fronte	H	<input type="text" value="92"/>	m
Inclinazione fronte principale	α	<input type="text" value="14"/>	°
Inclinazione del fronte secondario	β	<input type="text" value="-15"/>	°
Posizione di calcolo da piede		<input type="text" value="374"/>	m

$a=30.67$ $b=4.98$ $c=23.00$ $ST=1.09$

- ST = 1,0
- ST = 1,1
- ST = 1,2
- ST = 1,3
- ST = 1,4

SEZIONE TOPOGRAFICA 2 - BOLOGNA

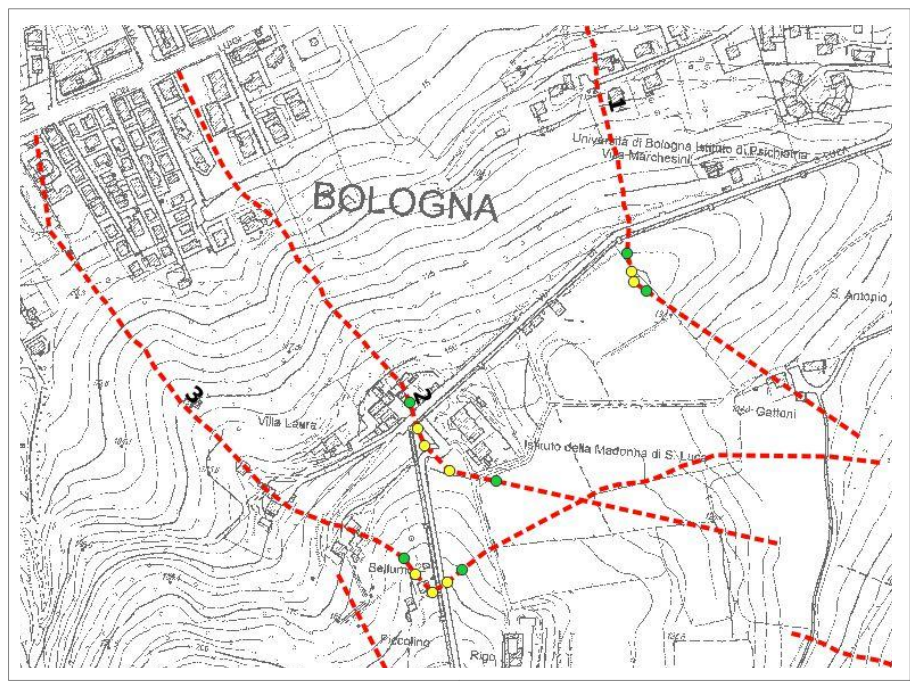
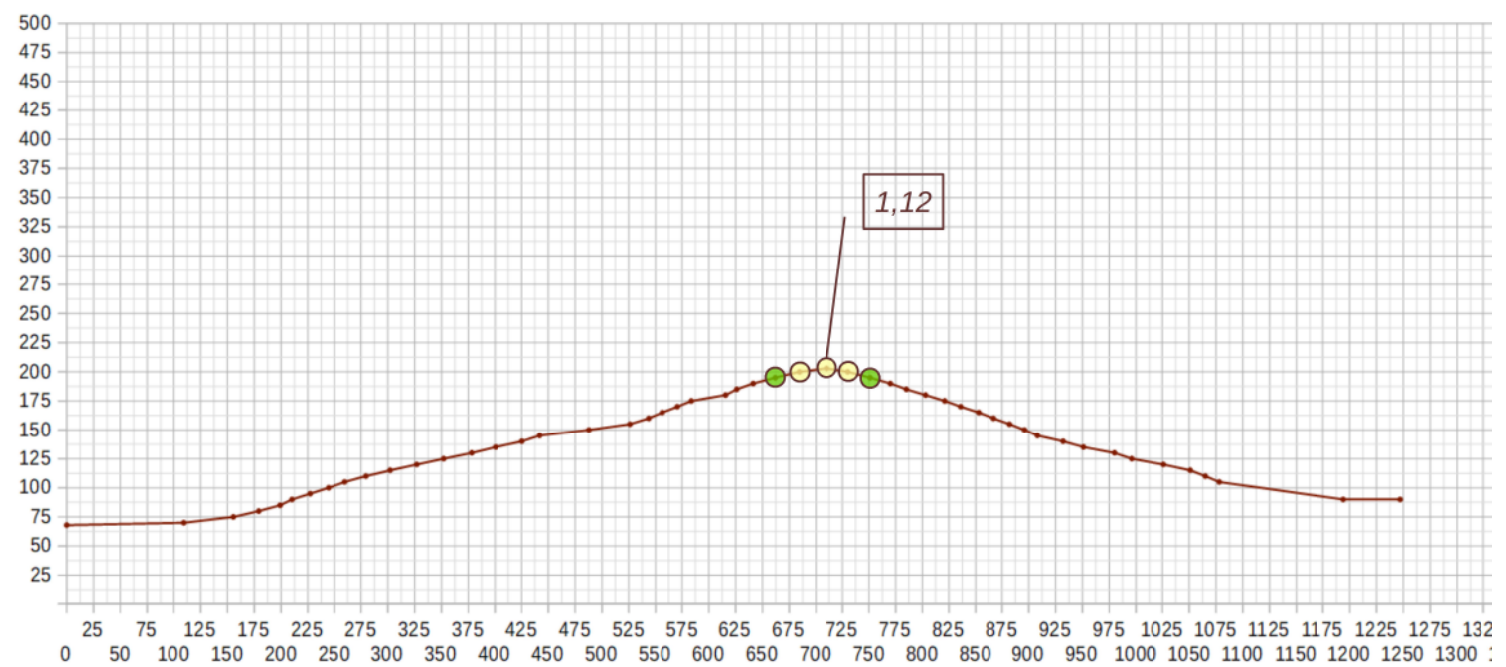


Atezza del fronte	H	<input type="text" value="80"/>	m
Inclinazione fronte principale	α	<input type="text" value="15"/>	°
Inclinazione del fronte secondario	β	<input type="text" value="-12"/>	°
Posizione di calcolo da piede		<input type="text" value="298"/>	m

$a=26.67$ $b=5.35$ $c=20.00$ $ST=1.06$

SEZIONE TOPOGRAFICA 3 - BOLOGNA

- ST = 1,0
- ST = 1,1
- ST = 1,2
- ST = 1,3
- ST = 1,4



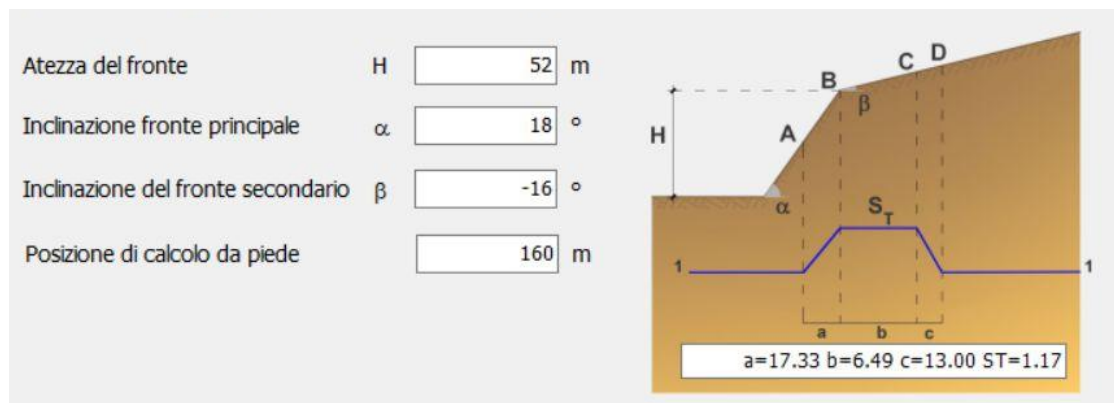
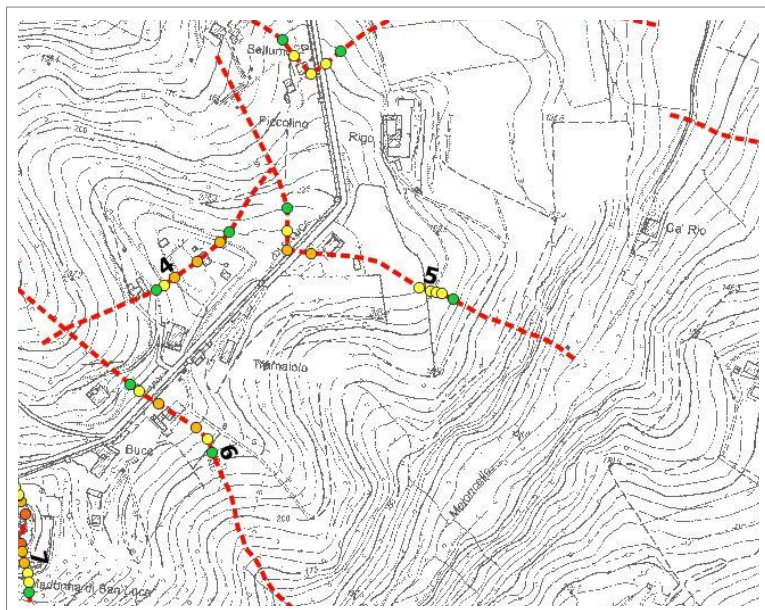
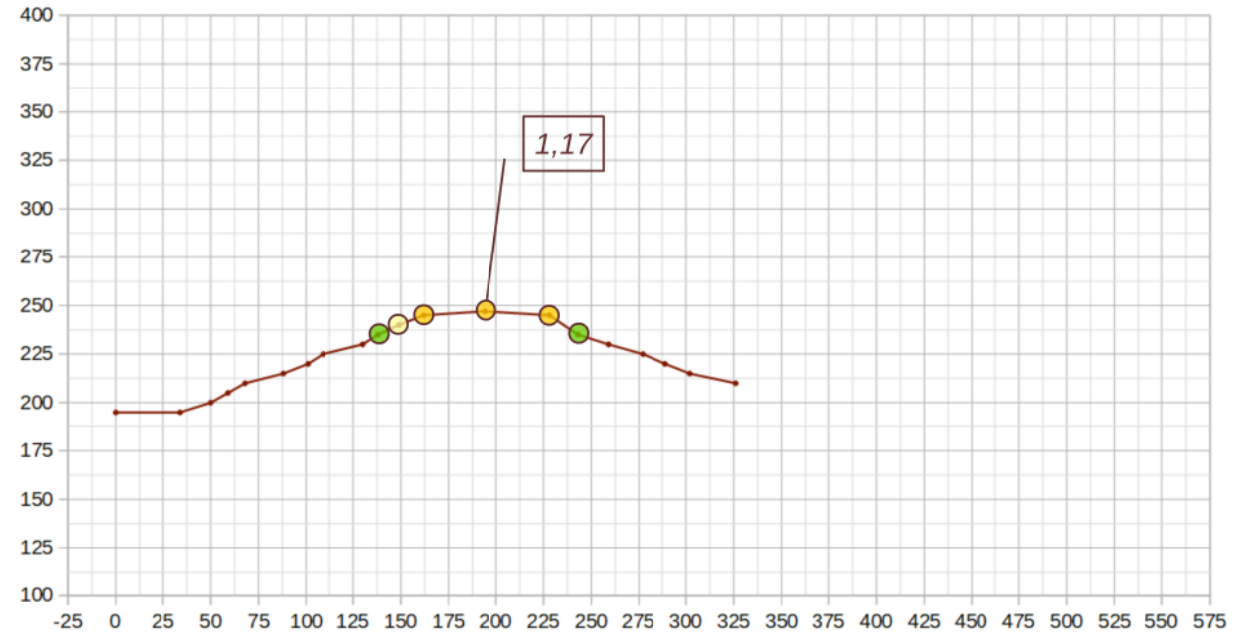
Atezza del fronte	H	<input type="text" value="48"/>	m
Inclinazione fronte principale	α	<input type="text" value="15"/>	°
Inclinazione del fronte secondario	β	<input type="text" value="-16"/>	°
Posizione di calcolo da piede		<input type="text" value="184"/>	m

The diagram shows a cross-section of a structure with a top surface divided into three segments: A (width a), B (width b), and C (width c). The total width is a+b+c. The height is H. The angle of the main slope is α and the angle of the secondary slope is β . The slope length is labeled S_T . The base is labeled 1-1.

a=16.00 b=5.35 c=12.00 ST=1.12

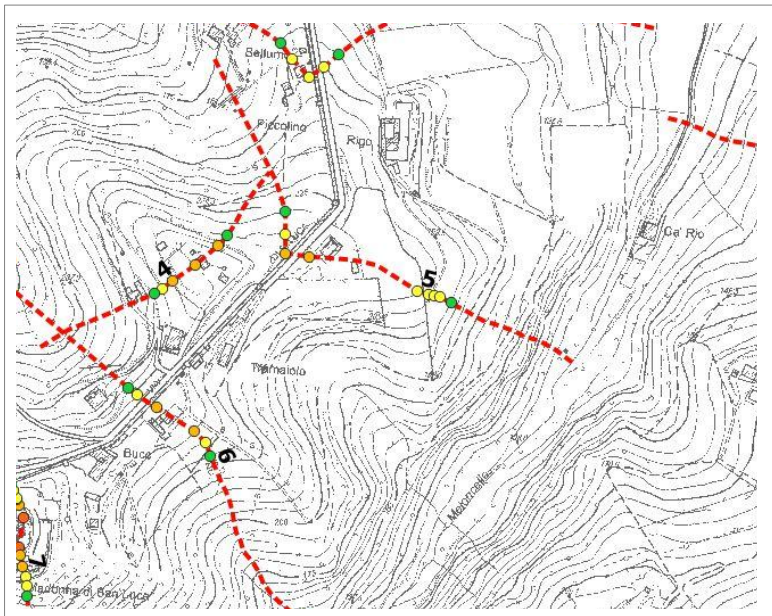
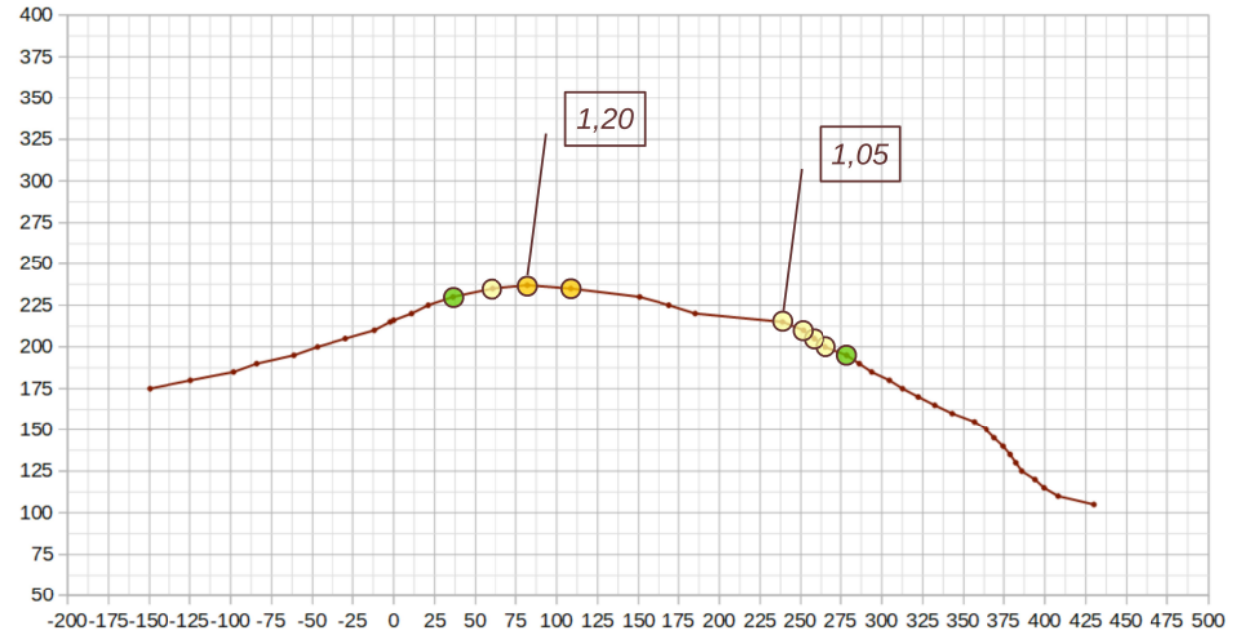
- ST =1,0
- ST =1,1
- ST =1,2
- ST =1,3
- ST =1,4

SEZIONE TOPOGRAFICA 4 - BOLOGNA

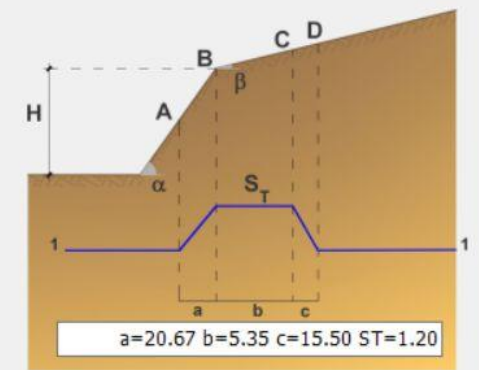


- ST = 1,0
- ST = 1,1
- ST = 1,2
- ST = 1,3
- ST = 1,4

SEZIONE TOPOGRAFICA 5 - BOLOGNA

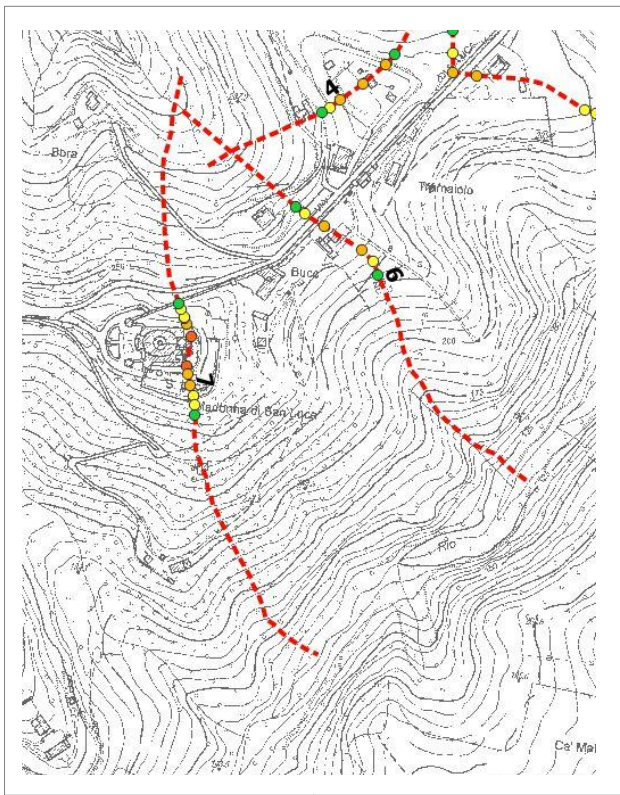
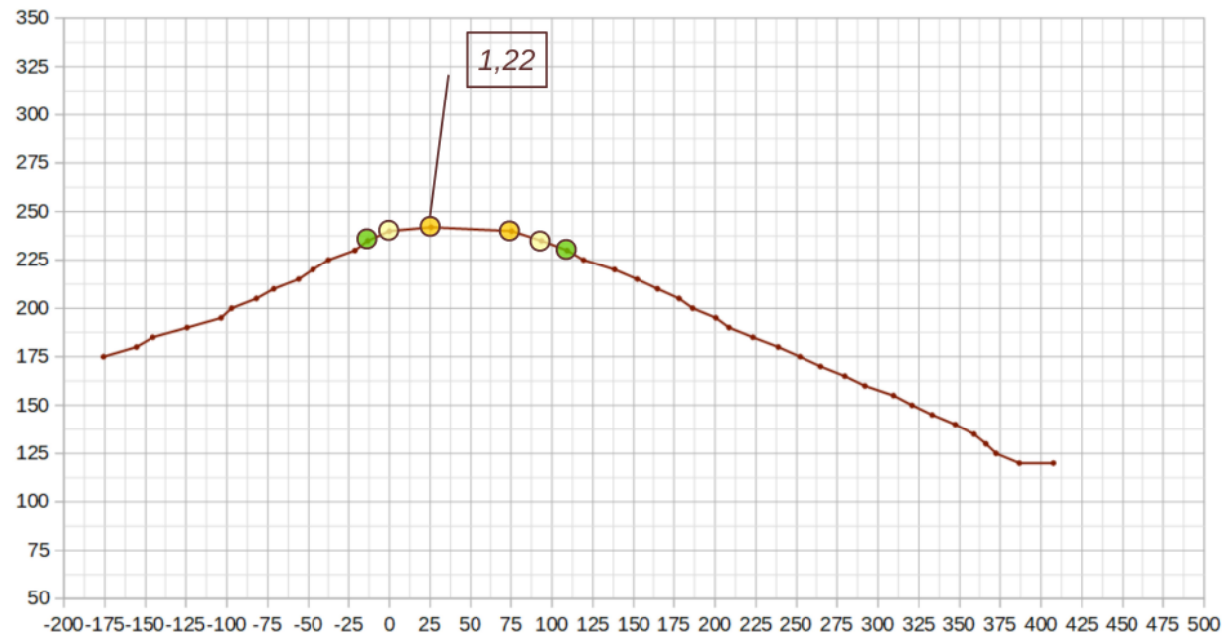


Atezza del fronte	H	<input type="text" value="62"/>	m
Inclinazione fronte principale	α	<input type="text" value="15"/>	°
Inclinazione del fronte secondario	β	<input type="text" value="-21"/>	°
Posizione di calcolo da piede		<input type="text" value="232"/>	m



- ST = 1,0
- ST = 1,1
- ST = 1,2
- ST = 1,3
- ST = 1,4

SEZIONE TOPOGRAFICA 6 - BOLOGNA

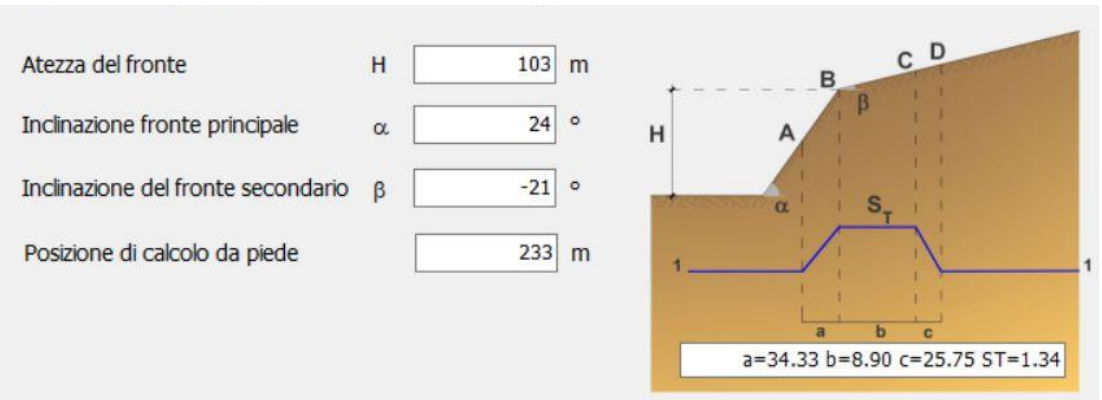
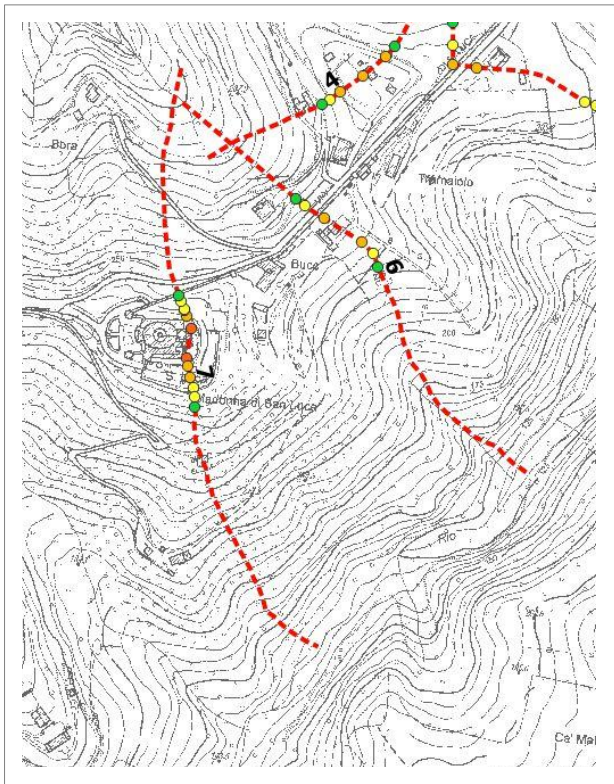
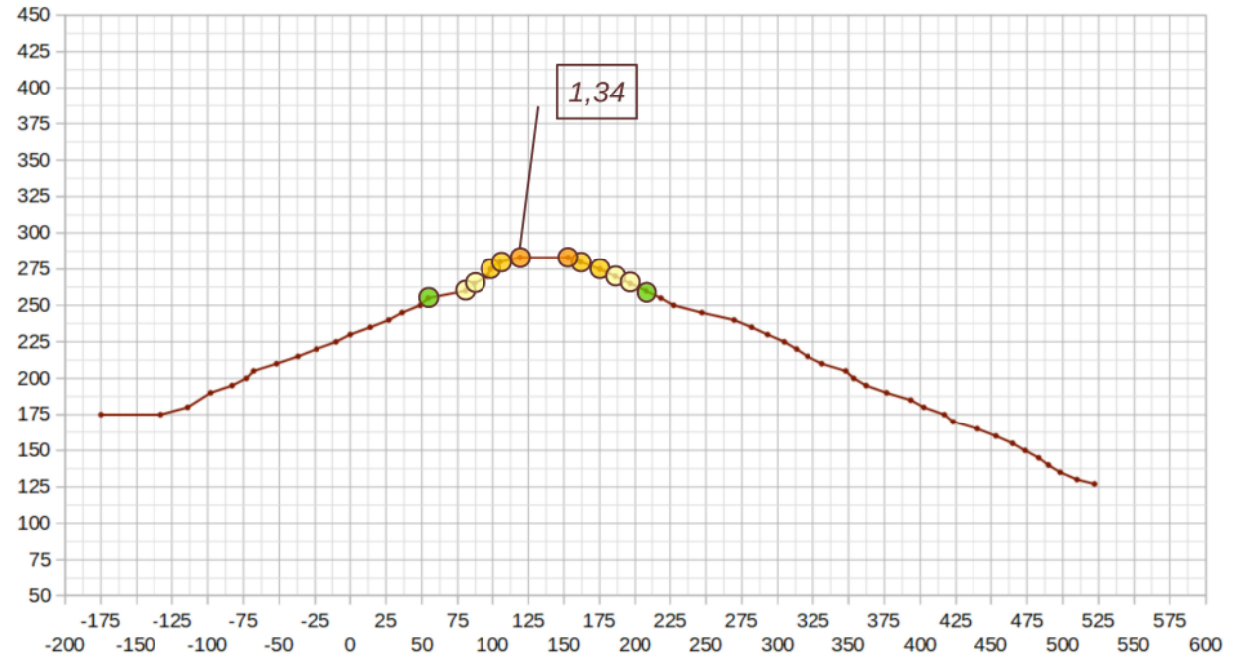


Atezza del fronte	H	<input type="text" value="117"/>	m
Inclinazione fronte principale	α	<input type="text" value="19"/>	°
Inclinazione del fronte secondario	β	<input type="text" value="-18"/>	°
Posizione di calcolo da piede		<input type="text" value="347"/>	m

a=39.00 b=6.88 c=29.25 ST=1.22

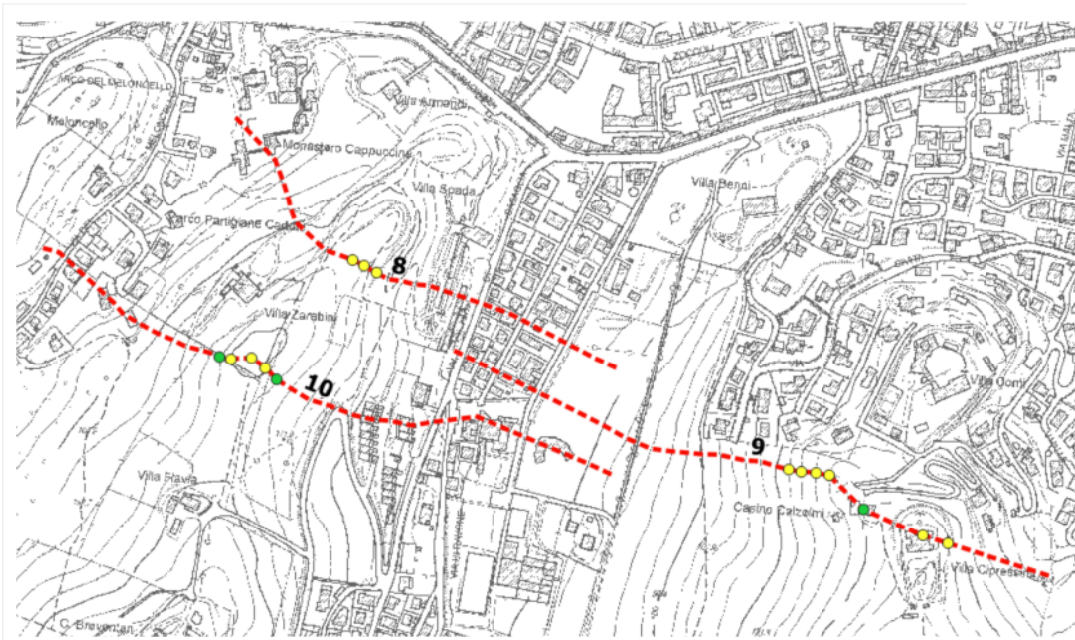
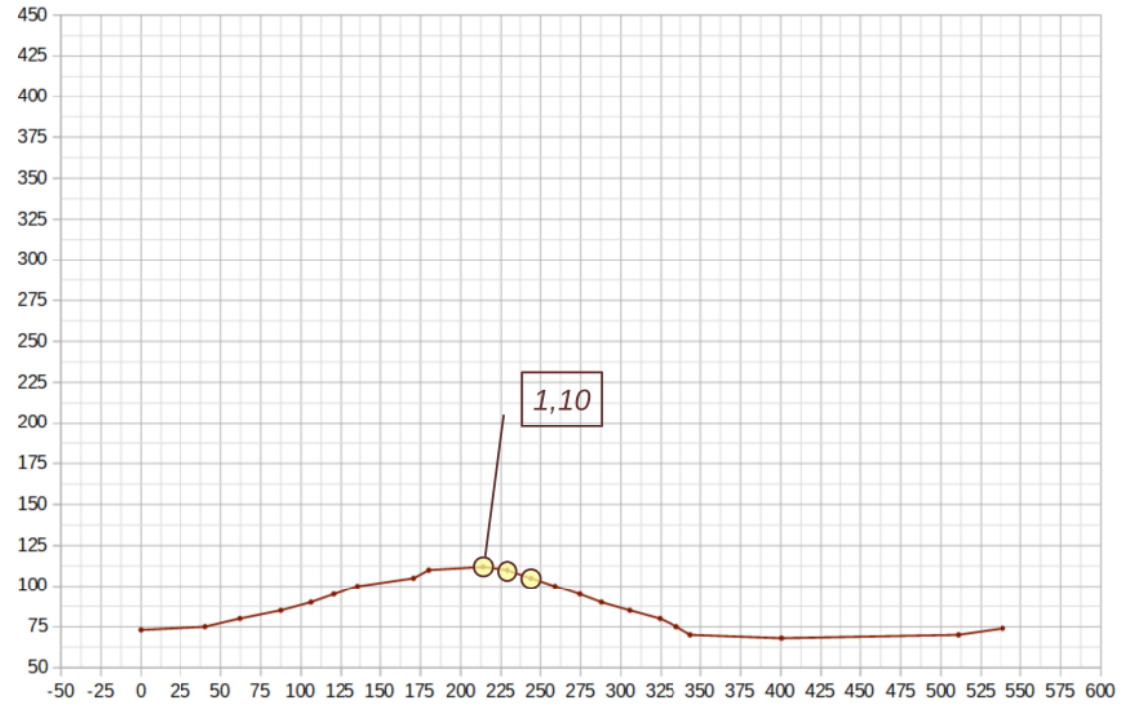
- ST = 1,0
- ST = 1,1
- ST = 1,2
- ST = 1,3
- ST = 1,4

SEZIONE TOPOGRAFICA 7 - BOLOGNA

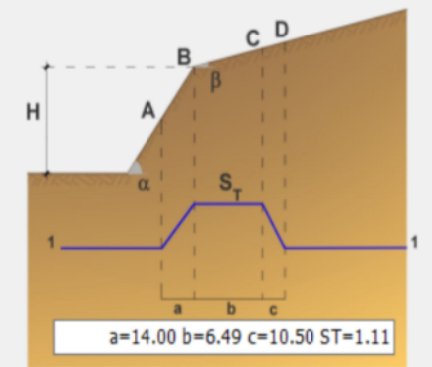


SEZIONE TOPOGRAFICA 8 - BOLOGNA

- ST = 1,0
- ST = 1,1
- ST = 1,2
- ST = 1,3
- ST = 1,4

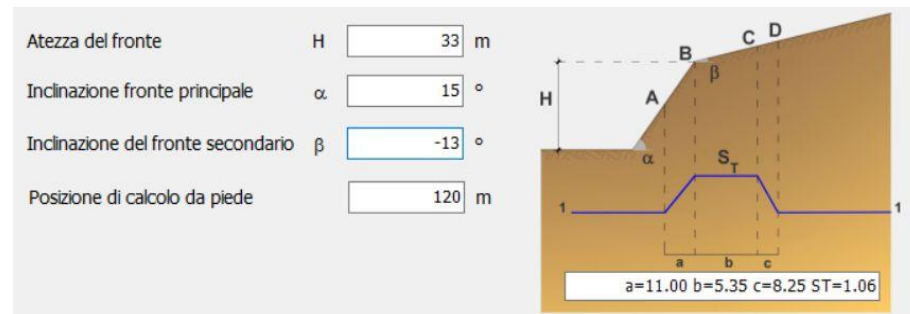
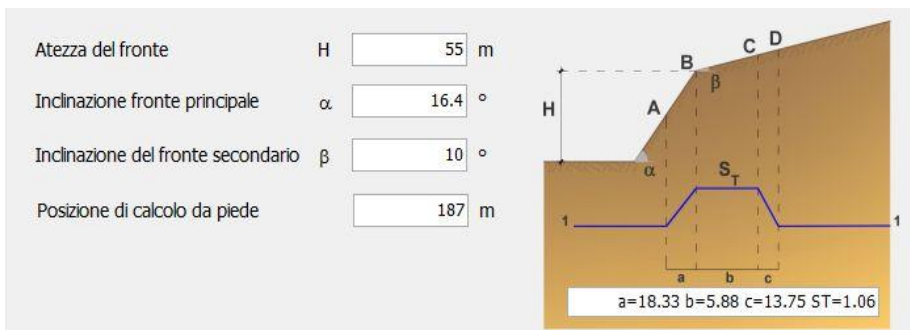
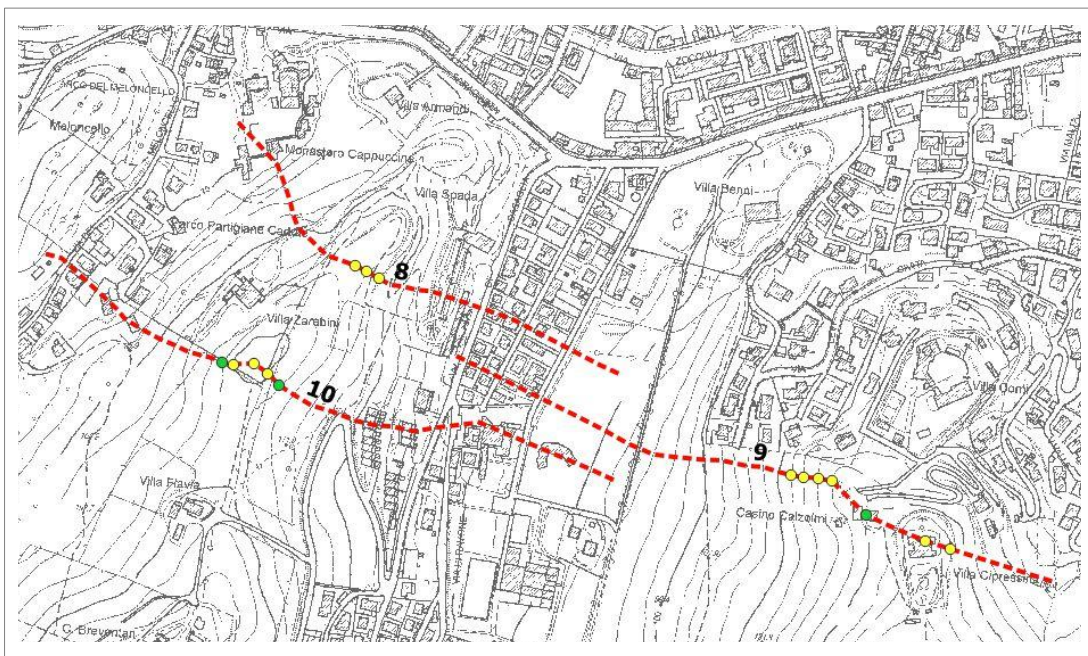
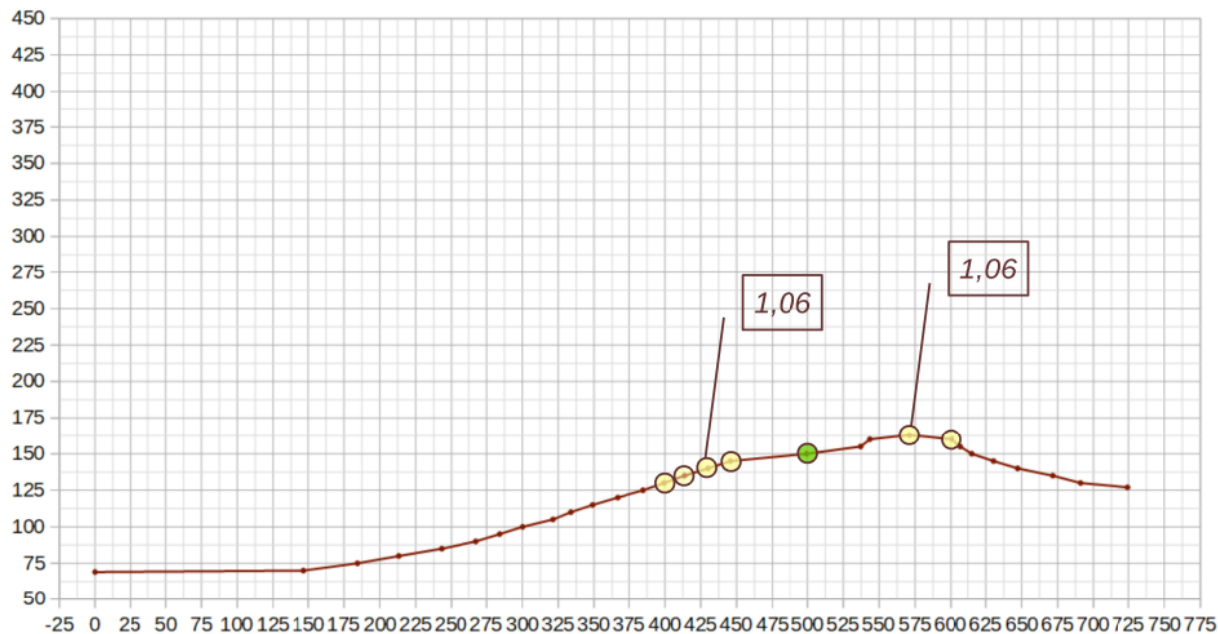


Atezza del fronte	H	<input type="text" value="42"/>	m
Inclinazione fronte principale	α	<input type="text" value="18"/>	°
Inclinazione del fronte secondario	β	<input type="text" value="-12"/>	°
Posizione di calcolo da piede		<input type="text" value="130"/>	m



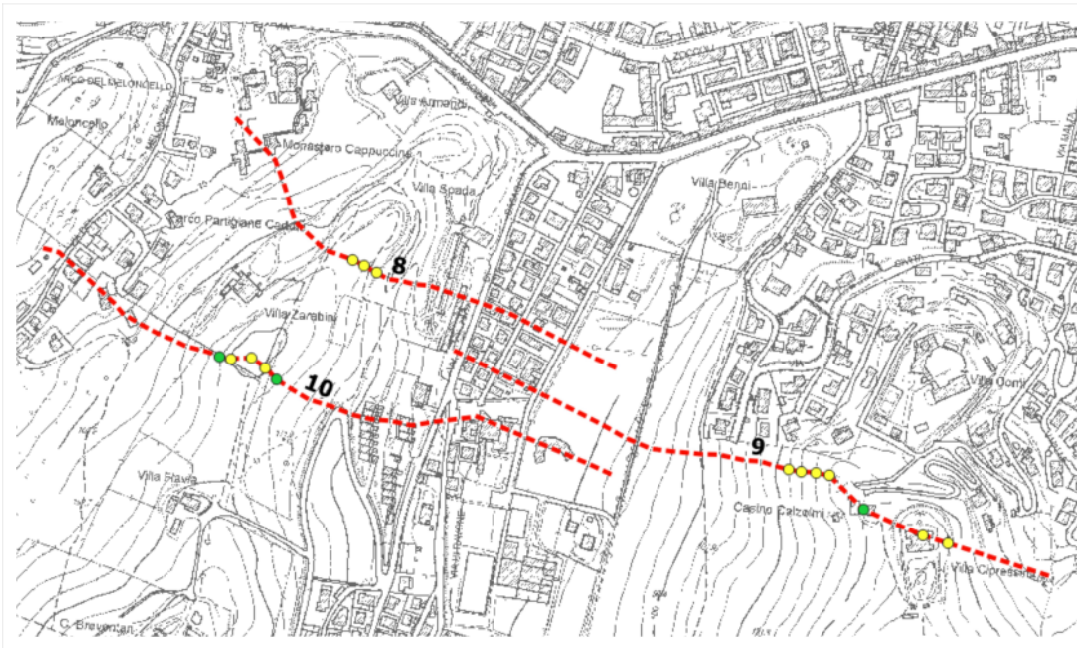
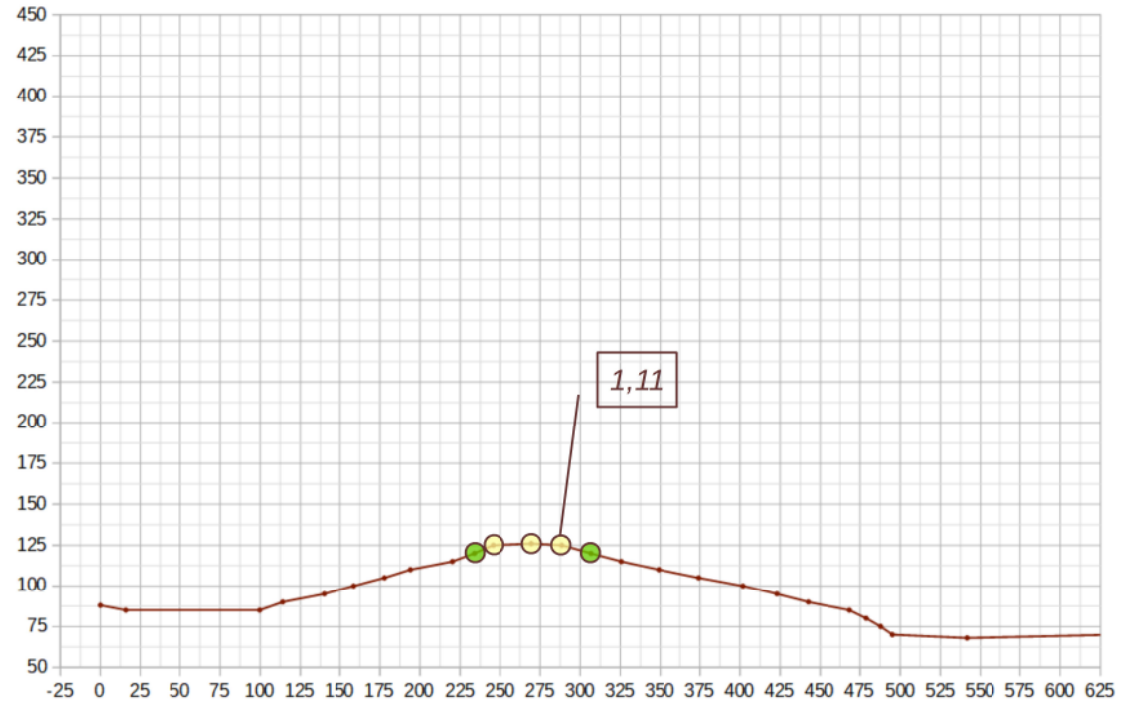
SEZIONE TOPOGRAFICA 9 - BOLOGNA

- ST = 1,0
- ST = 1,1
- ST = 1,2
- ST = 1,3
- ST = 1,4

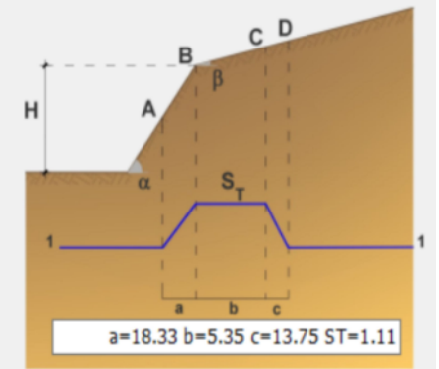


SEZIONE TOPOGRAFICA 10 - BOLOGNA

- ST = 1,0
- ST = 1,1
- ST = 1,2
- ST = 1,3
- ST = 1,4

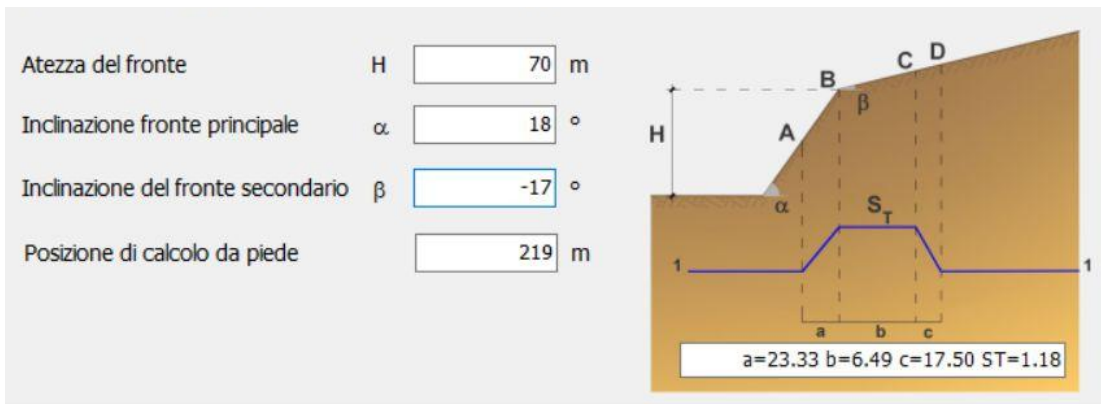
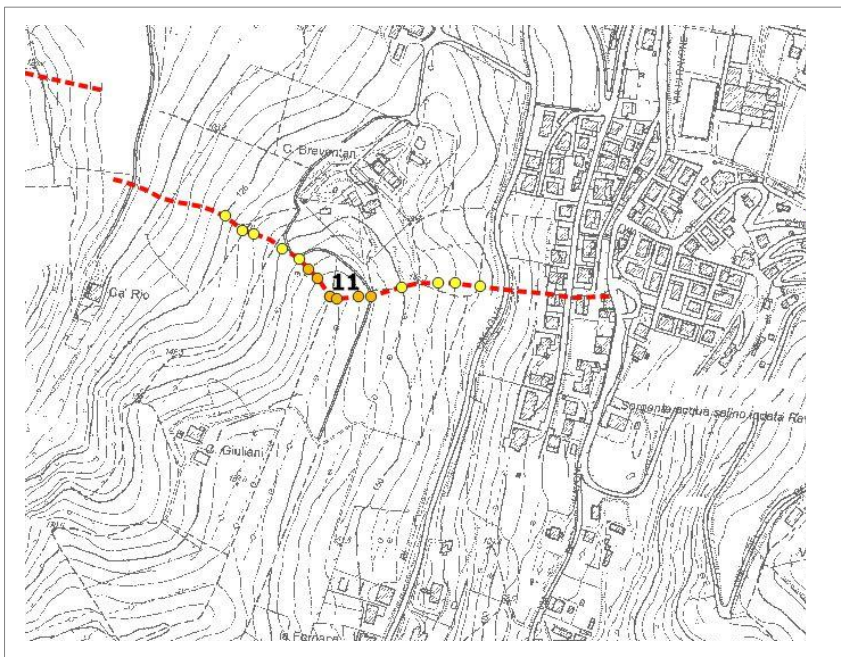
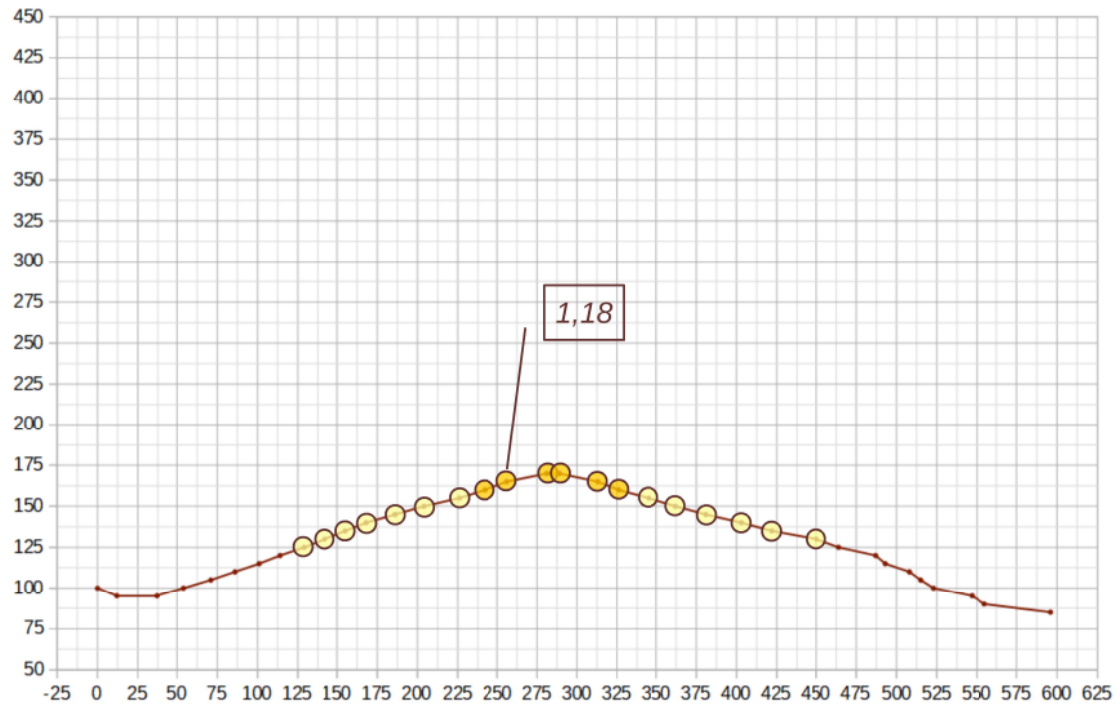


Atezza del fronte	H	<input type="text" value="55"/>	m
Inclinazione fronte principale	α	<input type="text" value="15"/>	°
Inclinazione del fronte secondario	β	<input type="text" value="-15"/>	°
Posizione di calcolo da piede		<input type="text" value="206"/>	m



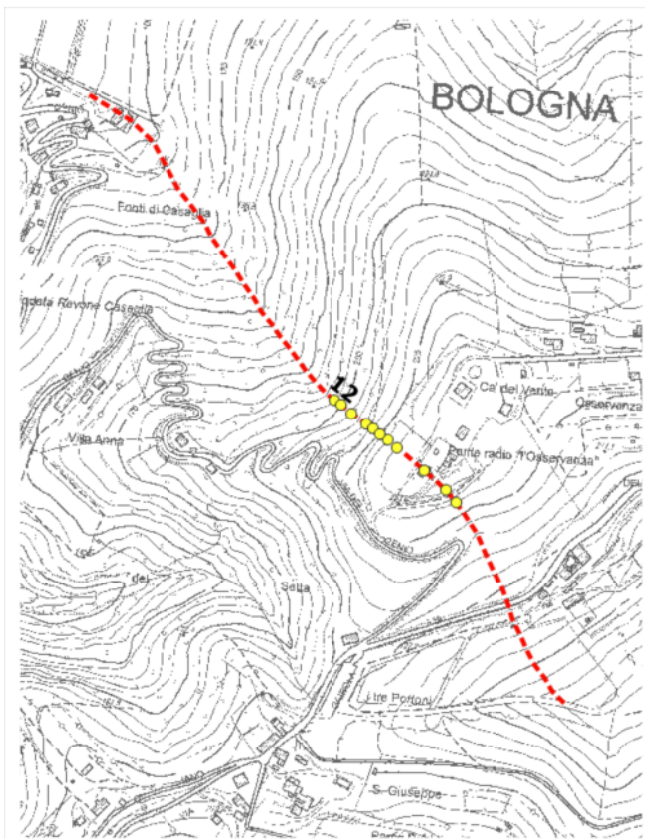
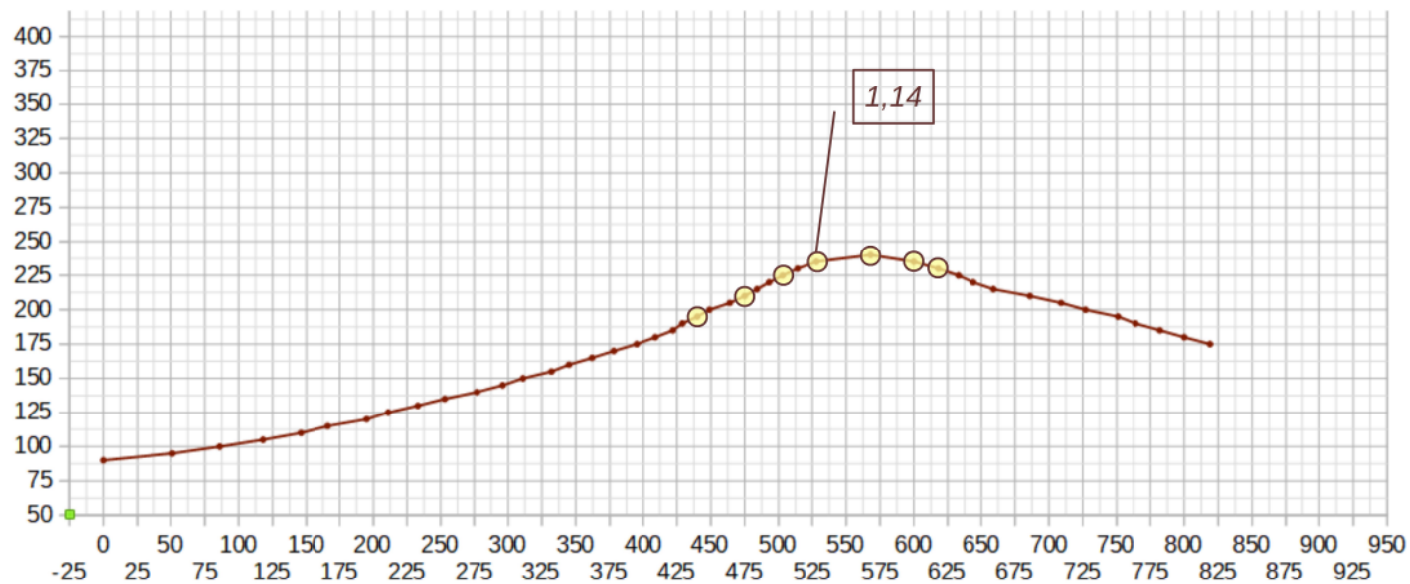
- ST = 1,0
- ST = 1,1
- ST = 1,2
- ST = 1,3
- ST = 1,4

SEZIONE TOPOGRAFICA 11 - BOLOGNA



- ST = 1,0
- ST = 1,1
- ST = 1,2
- ST = 1,3
- ST = 1,4

SEZIONE TOPOGRAFICA 12 - BOLOGNA

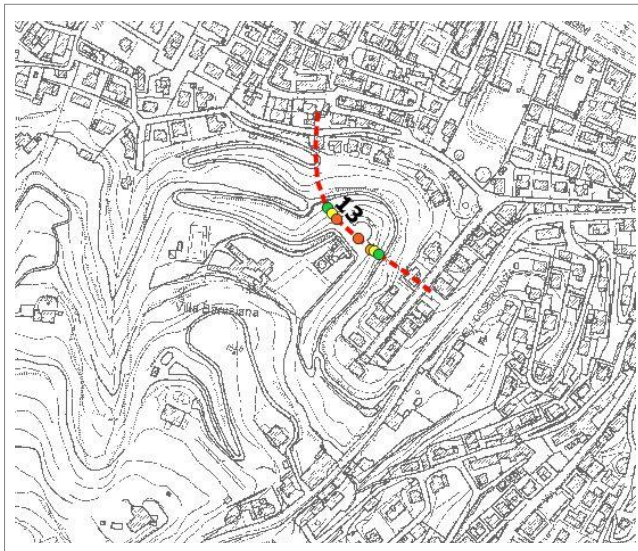
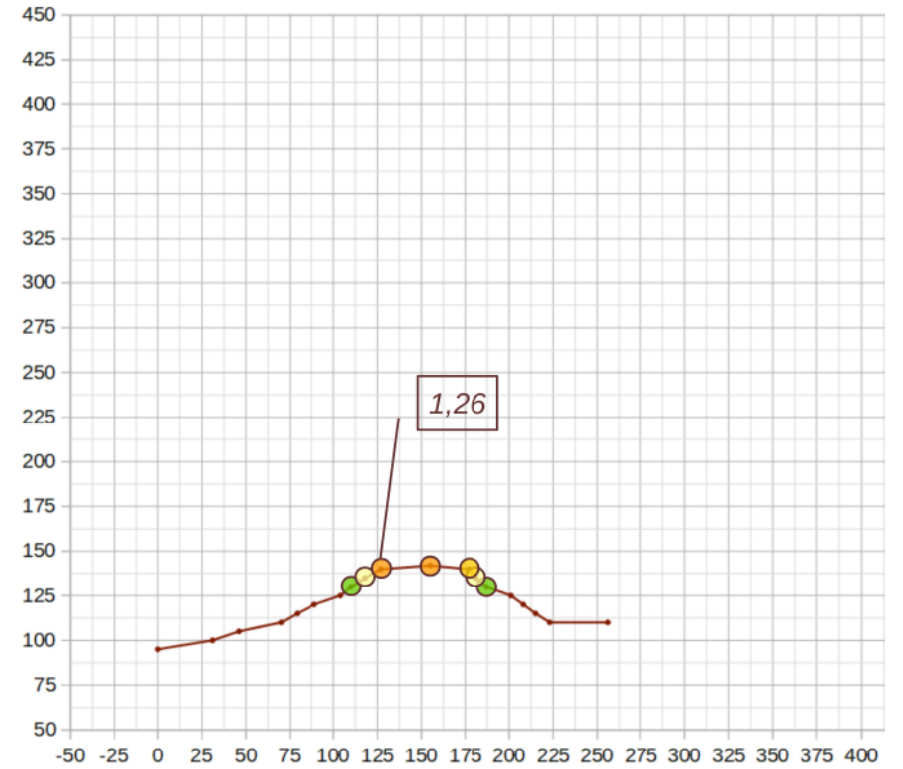


Atezza del fronte	H	<input type="text" value="125"/>	m
Inclinazione fronte principale	α	<input type="text" value="18"/>	°
Inclinazione del fronte secondario	β	<input type="text" value="-15"/>	°
Posizione di calcolo da piede		<input type="text" value="382"/>	m

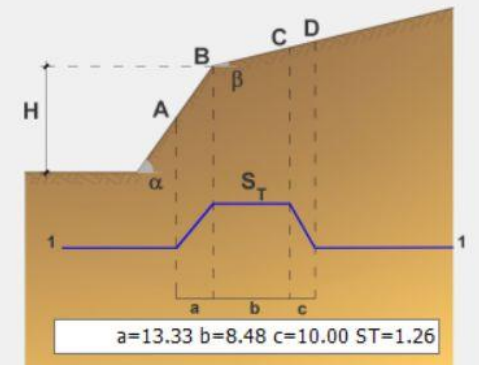
$a=41.67$ $b=6.49$ $c=31.25$ $ST=1.14$

- ST = 1,0
- ST = 1,1
- ST = 1,2
- ST = 1,3
- ST = 1,4

SEZIONE TOPOGRAFICA 13 - BOLOGNA

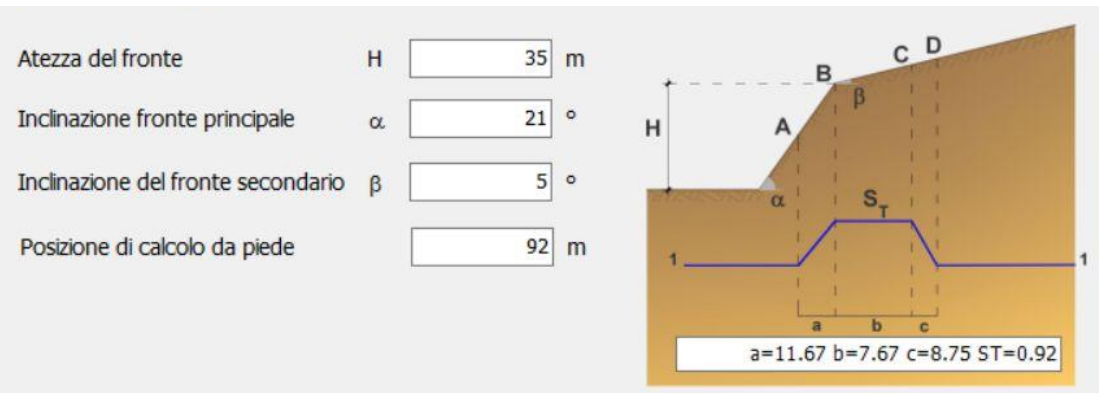
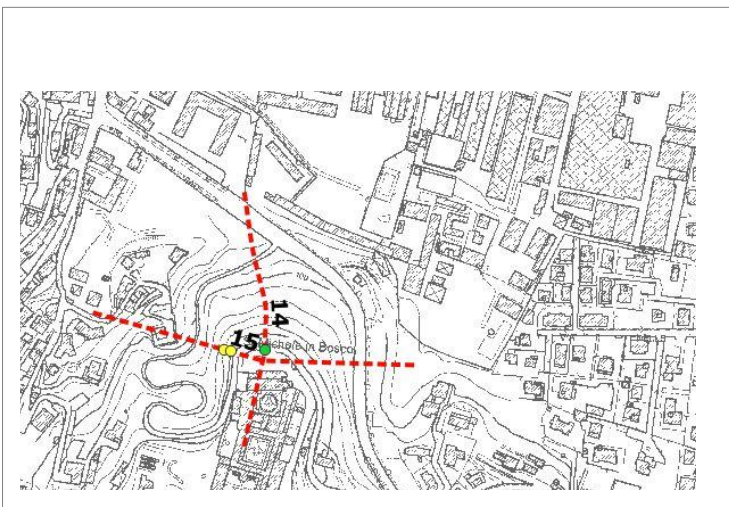
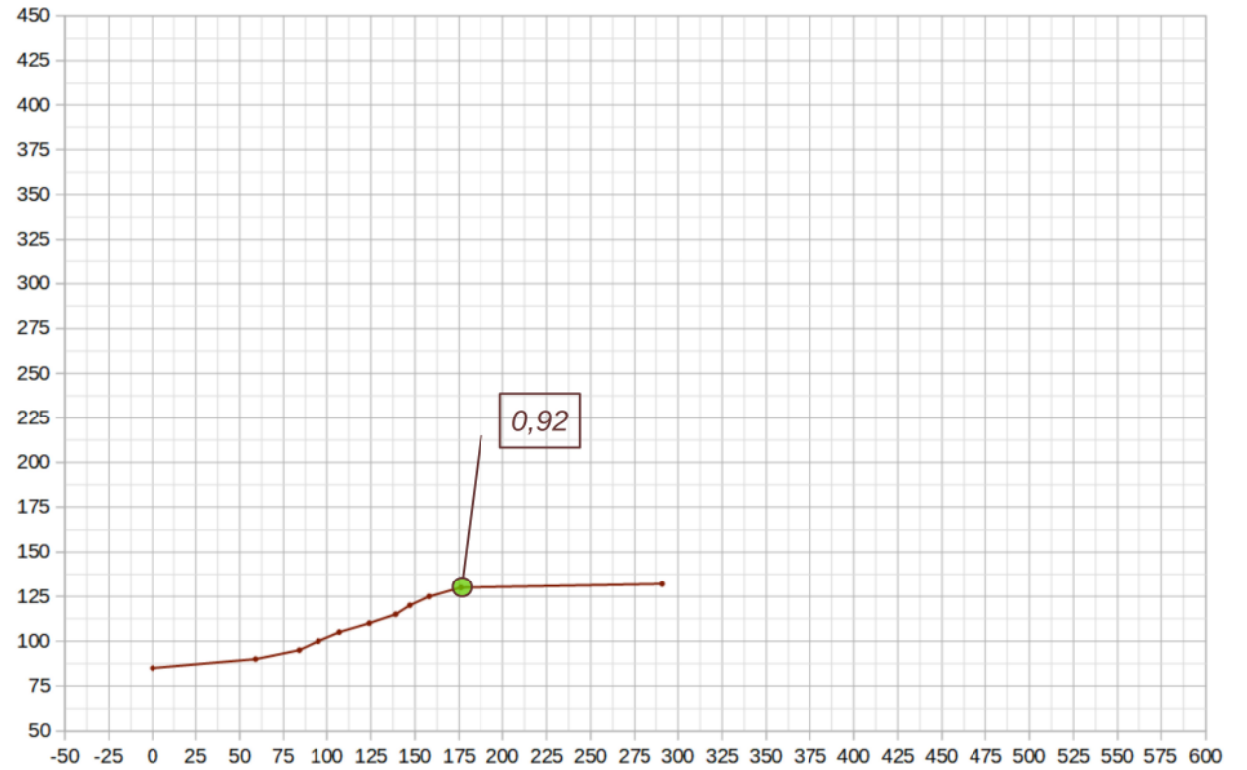


Atezza del fronte	H	<input type="text" value="40"/>	m
Inclinazione fronte principale	α	<input type="text" value="23"/>	°
Inclinazione del fronte secondario	β	<input type="text" value="-17"/>	°
Posizione di calcolo da piede		<input type="text" value="96"/>	m



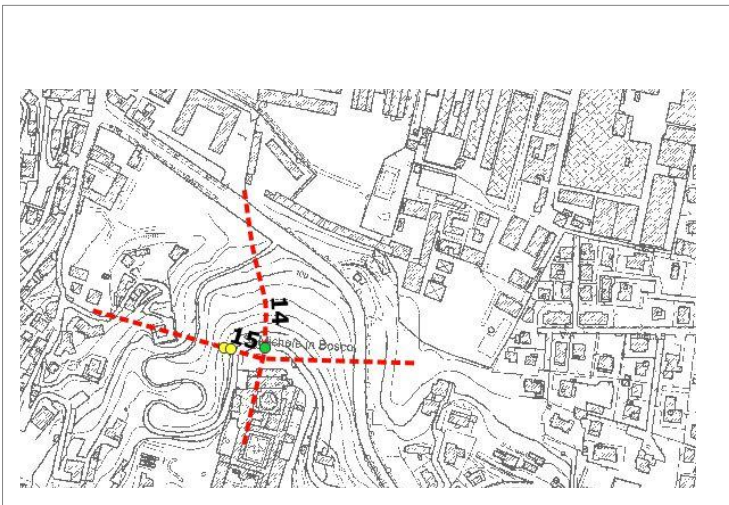
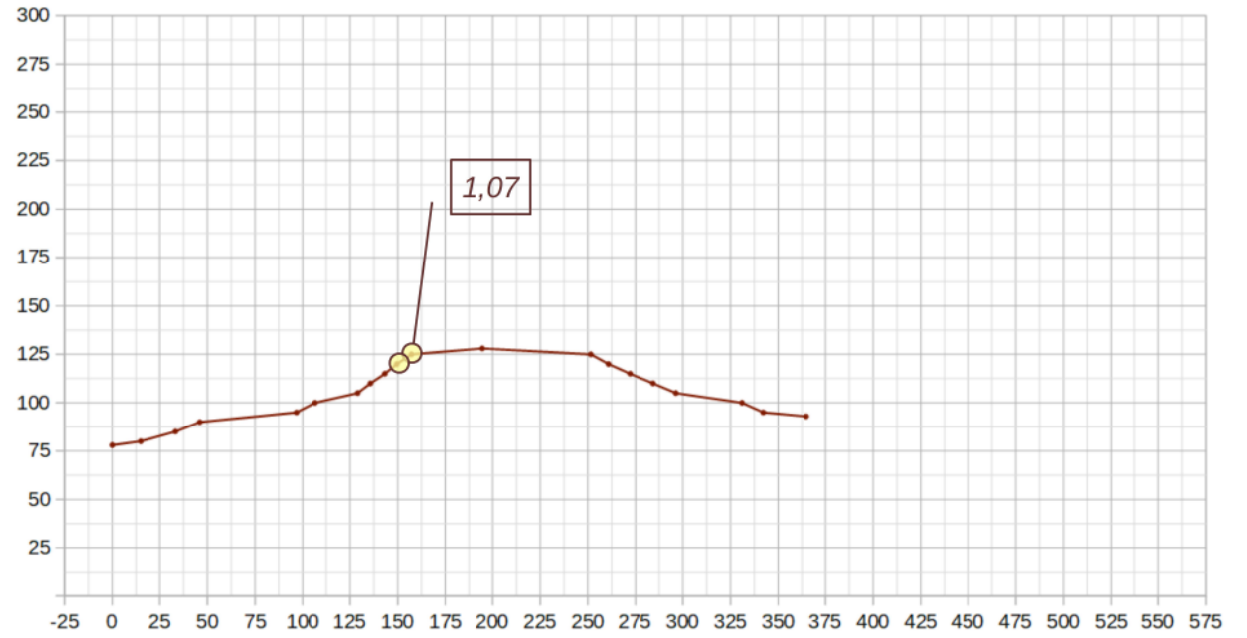
- ST = 1,0
- ST = 1,1
- ST = 1,2
- ST = 1,3
- ST = 1,4

SEZIONE TOPOGRAFICA 14 - BOLOGNA

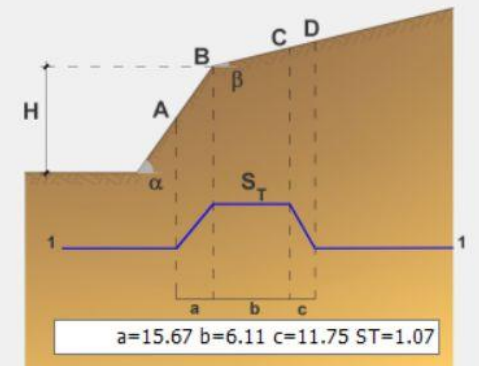


- ST = 1,0
- ST = 1,1
- ST = 1,2
- ST = 1,3
- ST = 1,4

SEZIONE TOPOGRAFICA 15 - BOLOGNA

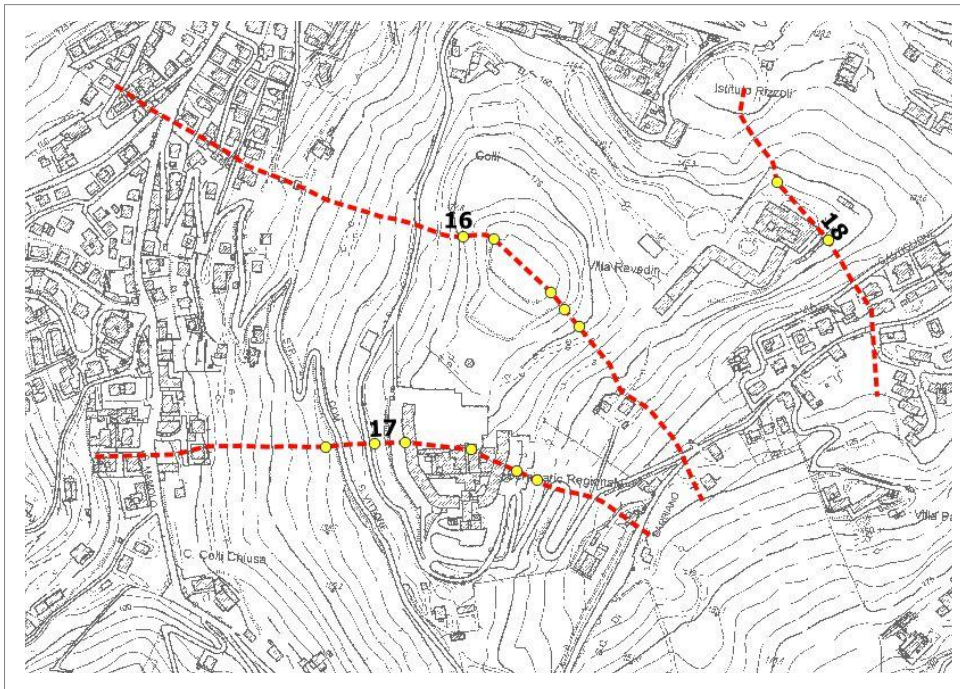
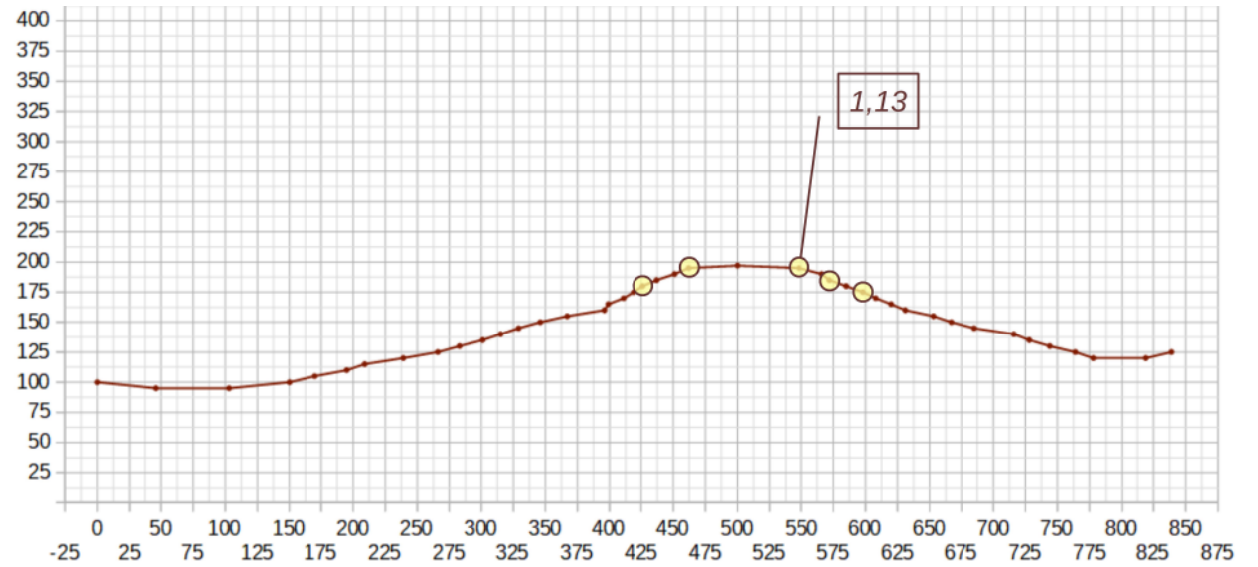


Atezza del fronte	H	<input type="text" value="47"/>	m
Inclinazione fronte principale	α	<input type="text" value="17"/>	°
Inclinazione del fronte secondario	β	<input type="text" value="10"/>	°
Posizione di calcolo da piede		<input type="text" value="157"/>	m

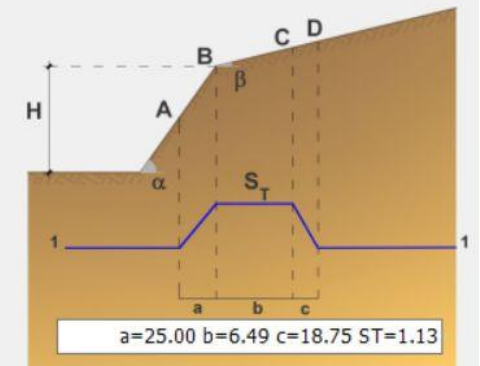


SEZIONE TOPOGRAFICA 16 - BOLOGNA

- ST = 1,0
- ST = 1,1
- ST = 1,2
- ST = 1,3
- ST = 1,4

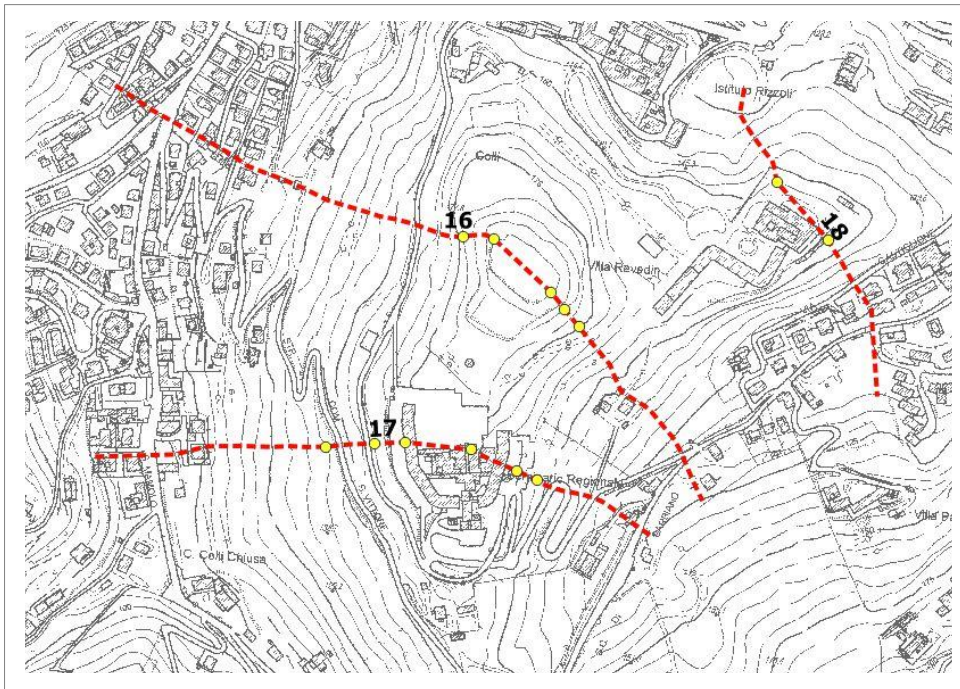
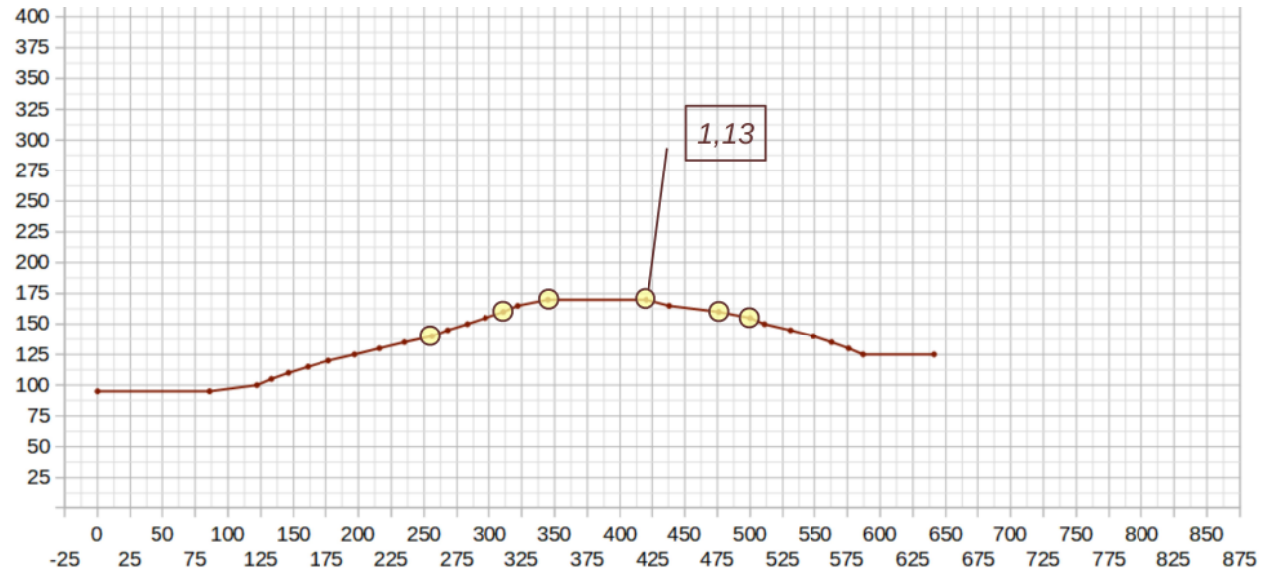


Atezza del fronte	H	<input type="text" value="75"/>	m
Inclinazione fronte principale	α	<input type="text" value="18"/>	°
Inclinazione del fronte secondario	β	<input type="text" value="-14"/>	°
Posizione di calcolo da piede		<input type="text" value="230"/>	m

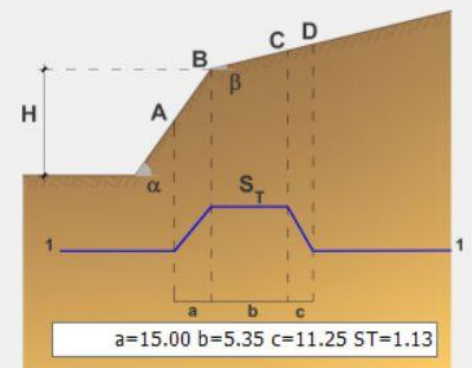


SEZIONE TOPOGRAFICA 17 - BOLOGNA

- ST = 1,0
- ST = 1,1
- ST = 1,2
- ST = 1,3
- ST = 1,4

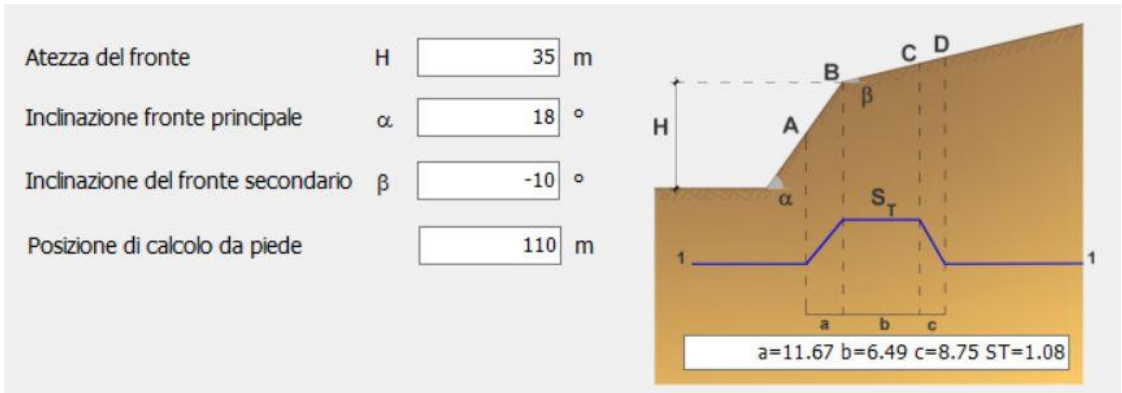
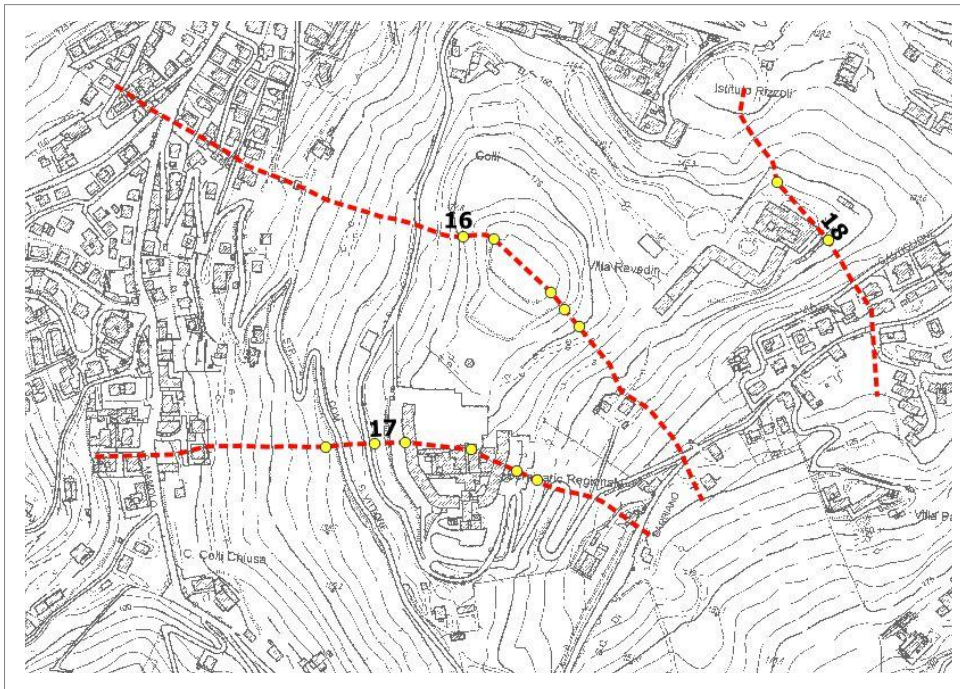
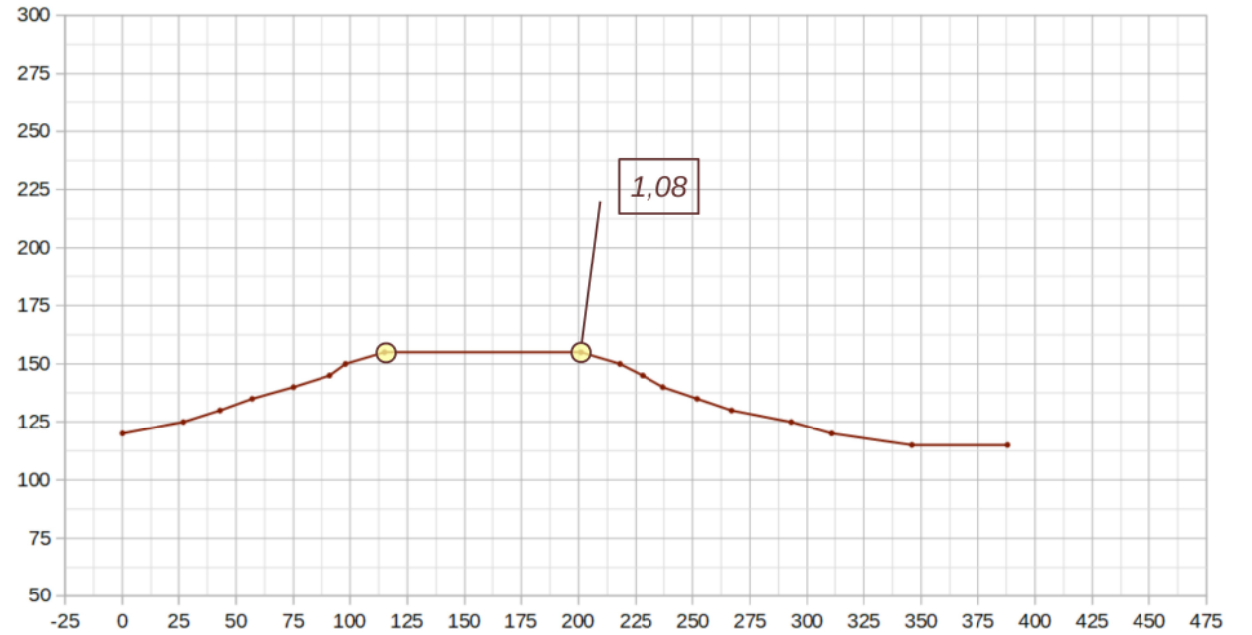


Atezza del fronte	H	45 m
Inclinazione fronte principale	α	15 °
Inclinazione del fronte secondario	β	-17 °
Posizione di calcolo da piede		167 m

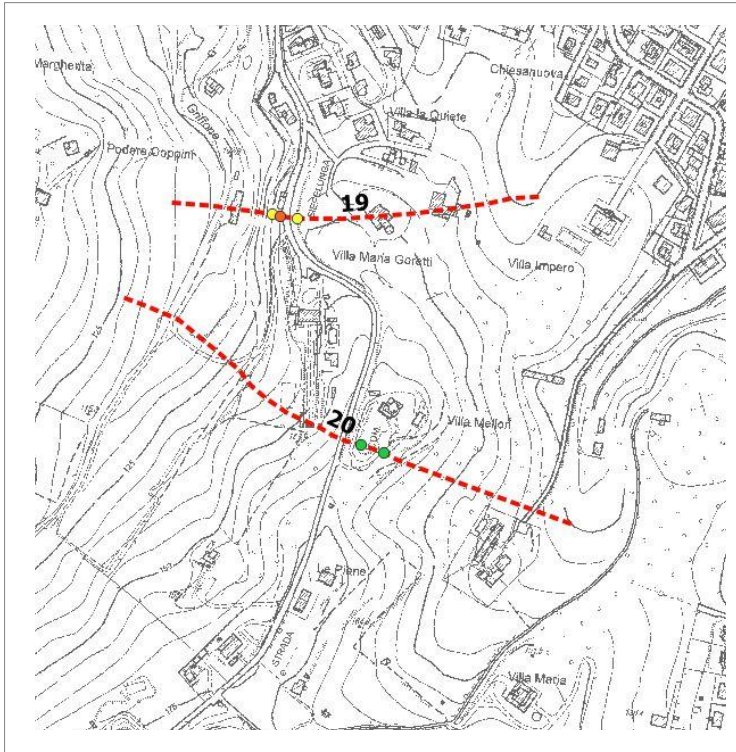


SEZIONE TOPOGRAFICA 18 - BOLOGNA

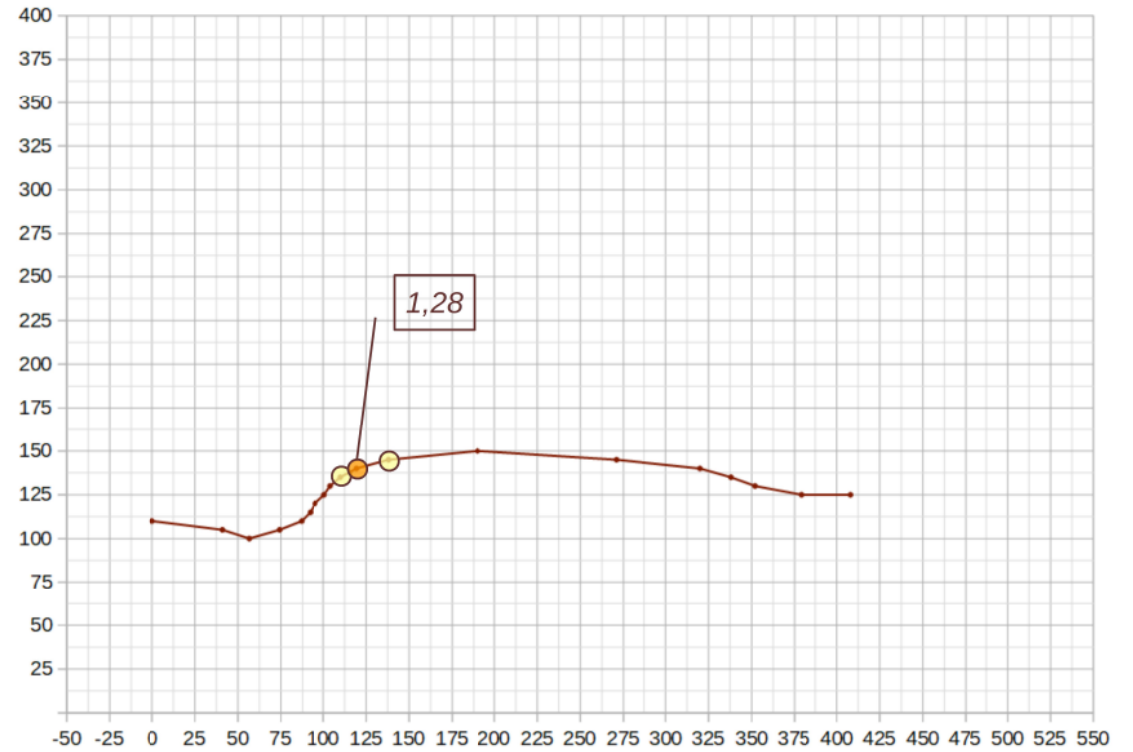
- ST = 1,0
- ST = 1,1
- ST = 1,2
- ST = 1,3
- ST = 1,4



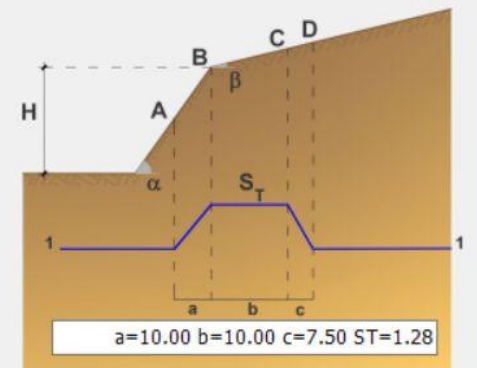
- ST = 1,0
- ST = 1,1
- ST = 1,2
- ST = 1,3
- ST = 1,4



SEZIONE TOPOGRAFICA 19 - BOLOGNA

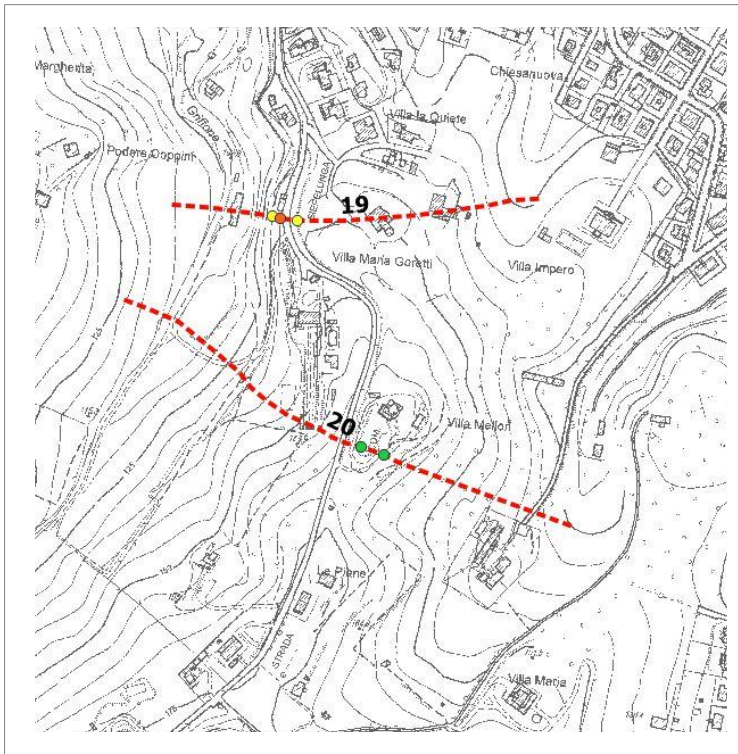
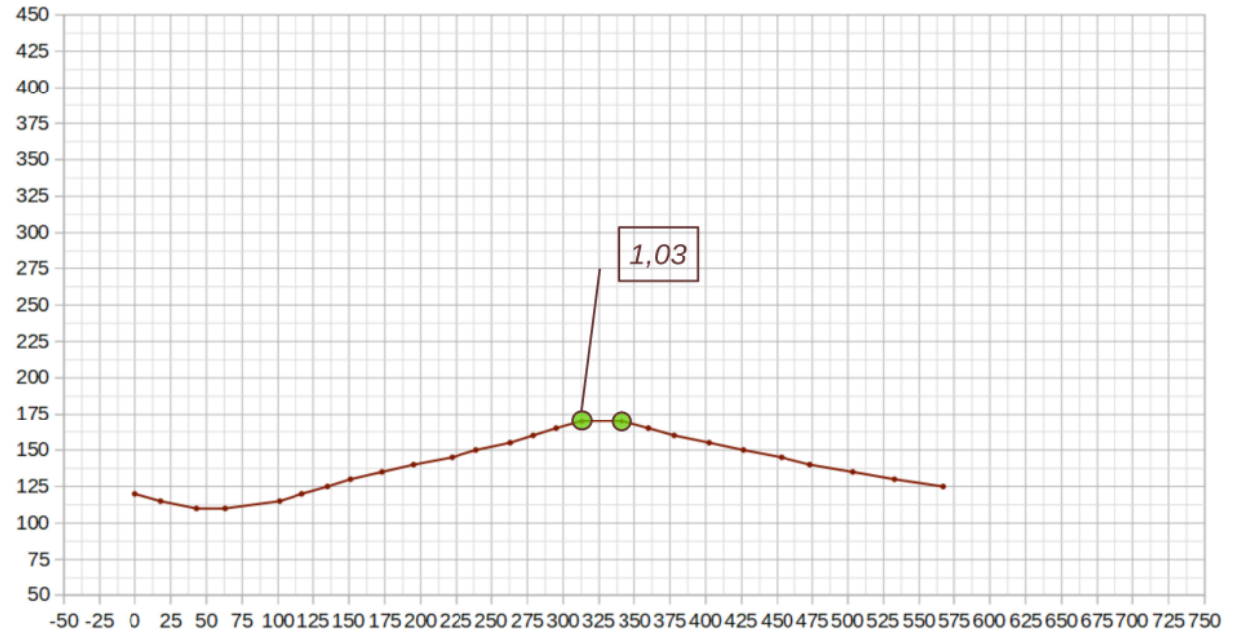


Atezza del fronte	H	<input type="text" value="30"/>	m
Inclinazione fronte principale	α	<input type="text" value="43"/>	°
Inclinazione del fronte secondario	β	<input type="text" value="10"/>	°
Posizione di calcolo da piede		<input type="text" value="32"/>	m

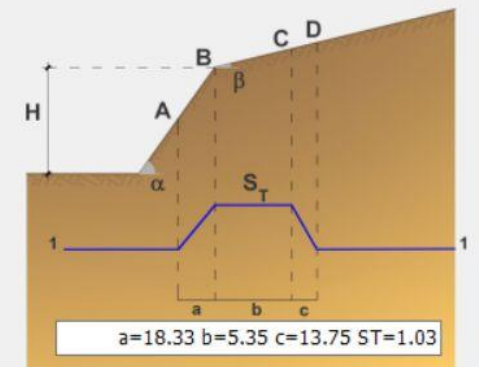


- ST = 1,0
- ST = 1,1
- ST = 1,2
- ST = 1,3
- ST = 1,4

SEZIONE TOPOGRAFICA 20 - BOLOGNA



Atezza del fronte	H	<input type="text" value="55"/>	m
Inclinazione fronte principale	α	<input type="text" value="15"/>	°
Inclinazione del fronte secondario	β	<input type="text" value="-10"/>	°
Posizione di calcolo da piede		<input type="text" value="212"/>	m



- ST = 1,0
- ST = 1,1
- ST = 1,2
- ST = 1,3
- ST = 1,4

SEZIONE TOPOGRAFICA 21 - BOLOGNA

