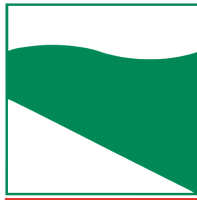




PROTEZIONE CIVILE  
Presidenza del Consiglio dei Ministri  
Dipartimento della Protezione Civile



Regione Emilia-Romagna



CONFERENZA DELLE REGIONI E  
DELLE PROVINCE AUTONOME

Attuazione dell'articolo 11 dalla legge 24 giugno 2009, n.77

# MICROZONAZIONE SISMICA

## Livello 2

### Allegato 3 – Sezioni topografiche

## Regione Emilia–Romagna

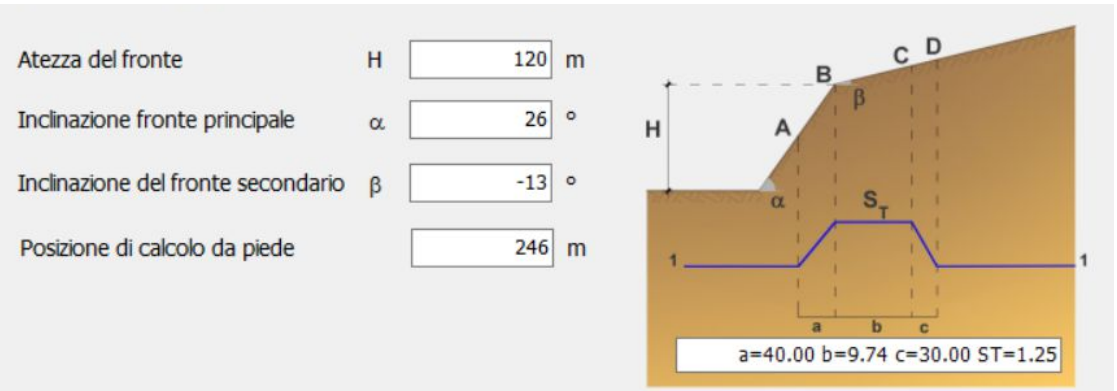
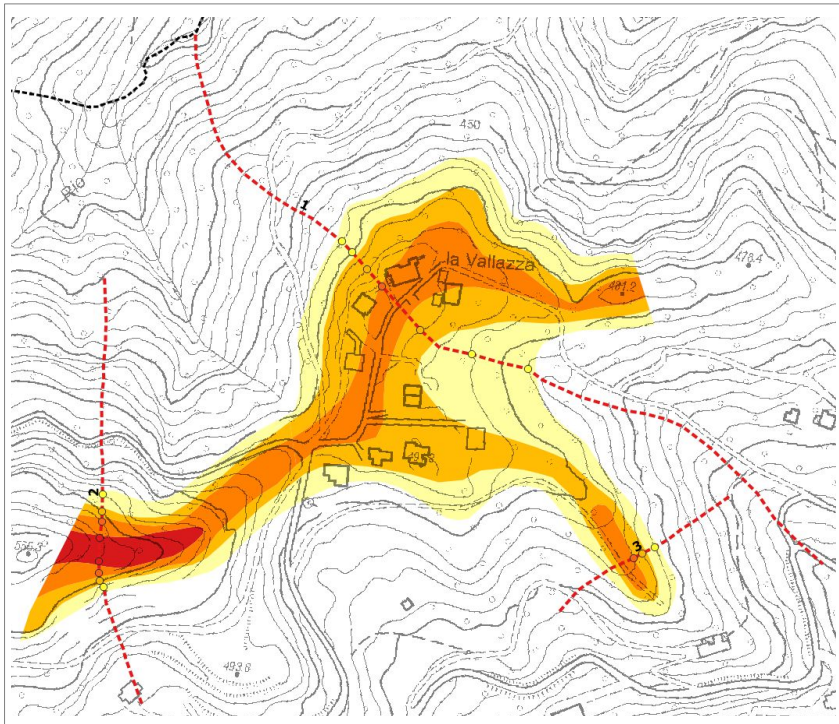
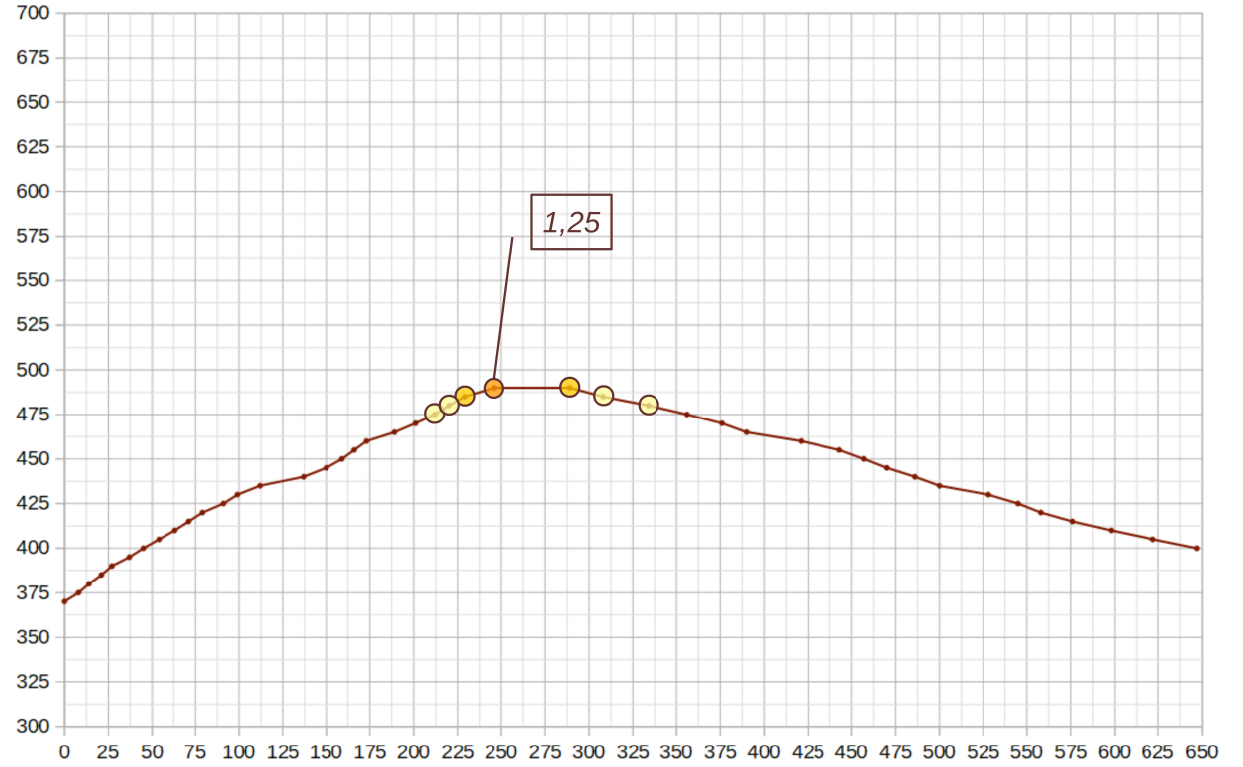
### Comune di Monzuno



Regione	Soggetto realizzatore	Data
EMILIA–ROMAGNA	Raggruppamento temporaneo di professionisti Capogruppo: dott. geol. Samuel Sangiorgi Mandanti: dott. geol. Raffaele Brunaldi, dott. geol. Maurizio Zamboni, dott. geol. Antonio Milioto, ing. Marco Soglia	Luglio 2020

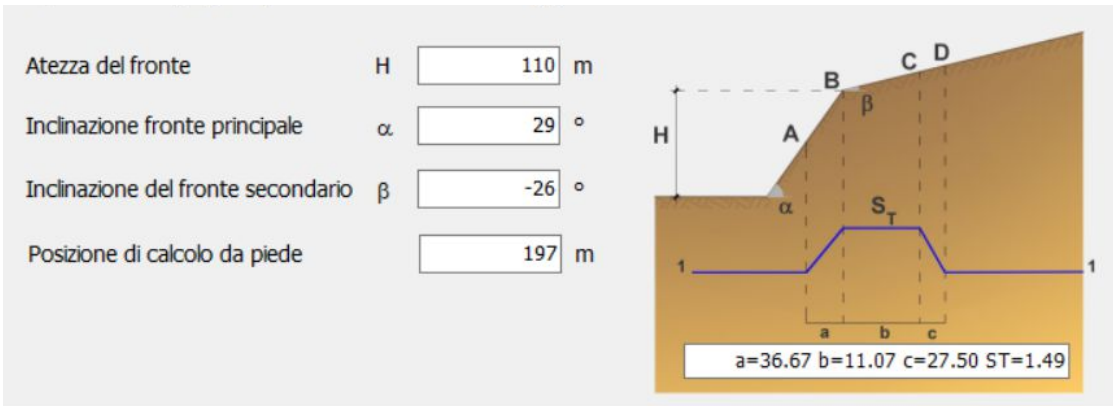
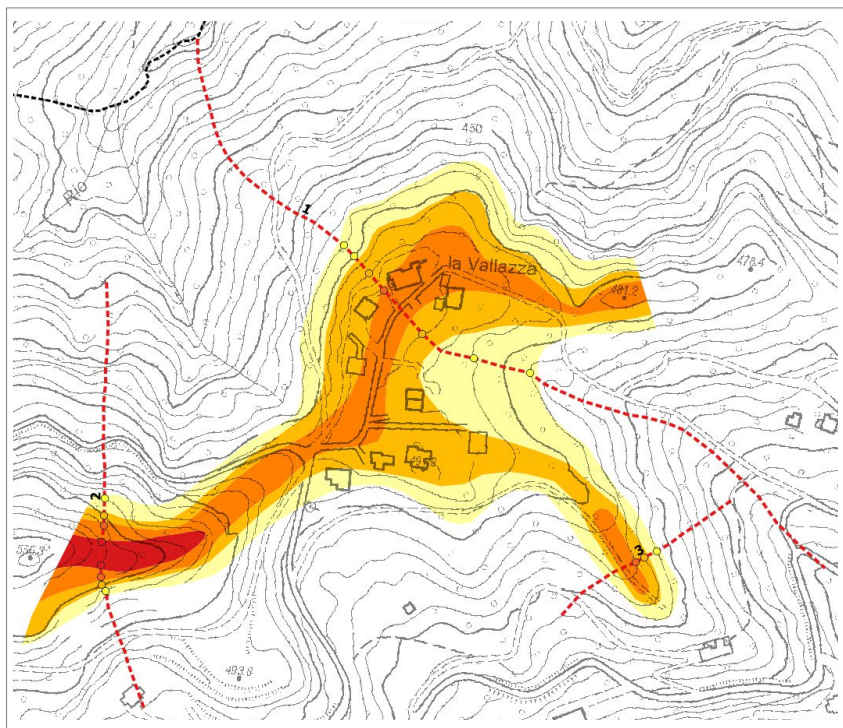
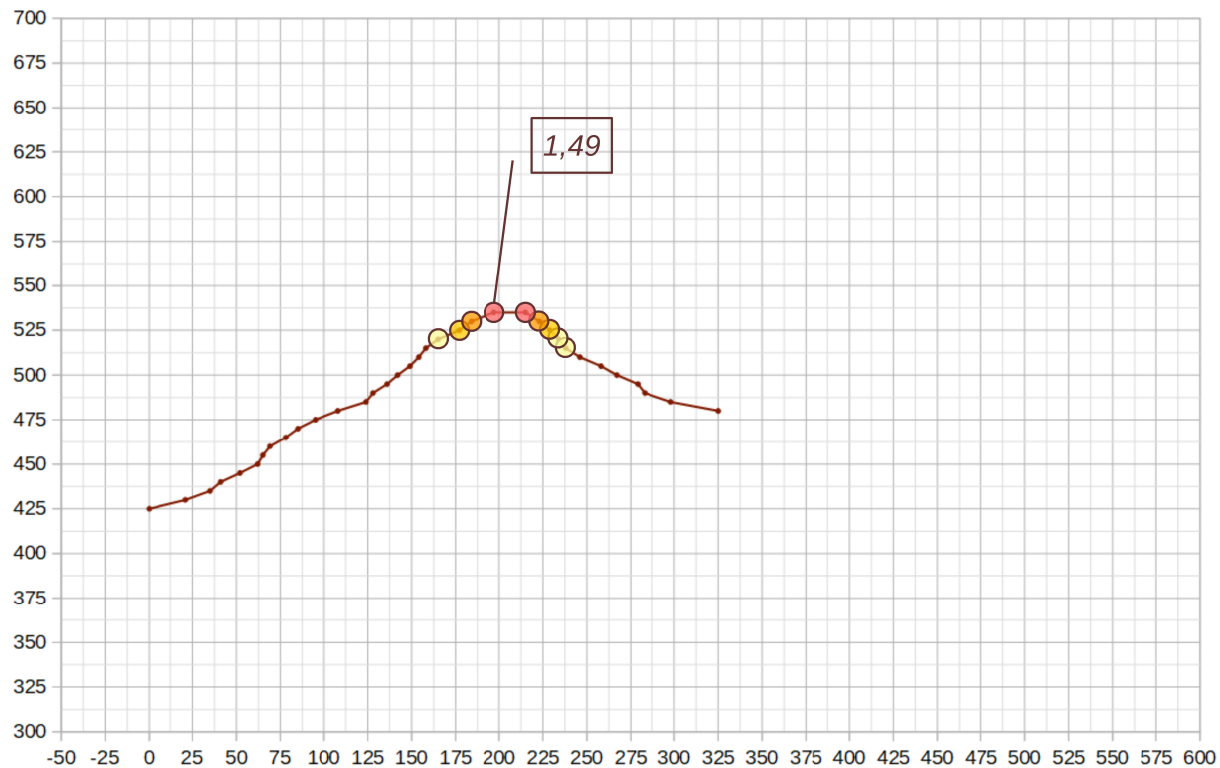
- ST = 1,0
- ST = 1,1
- ST = 1,2
- ST = 1,3
- ST = 1,4

### SEZIONE TOPOGRAFICA 1 - MONZUNO



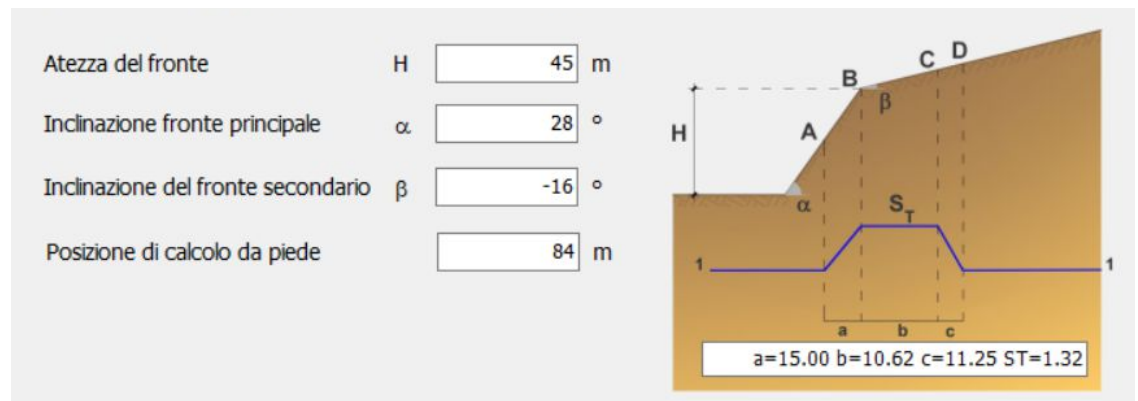
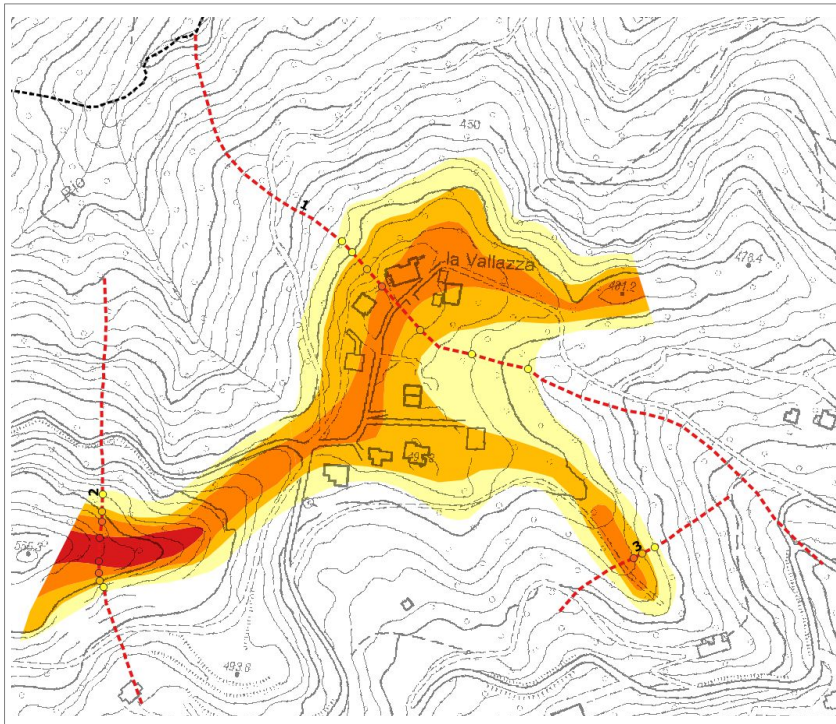
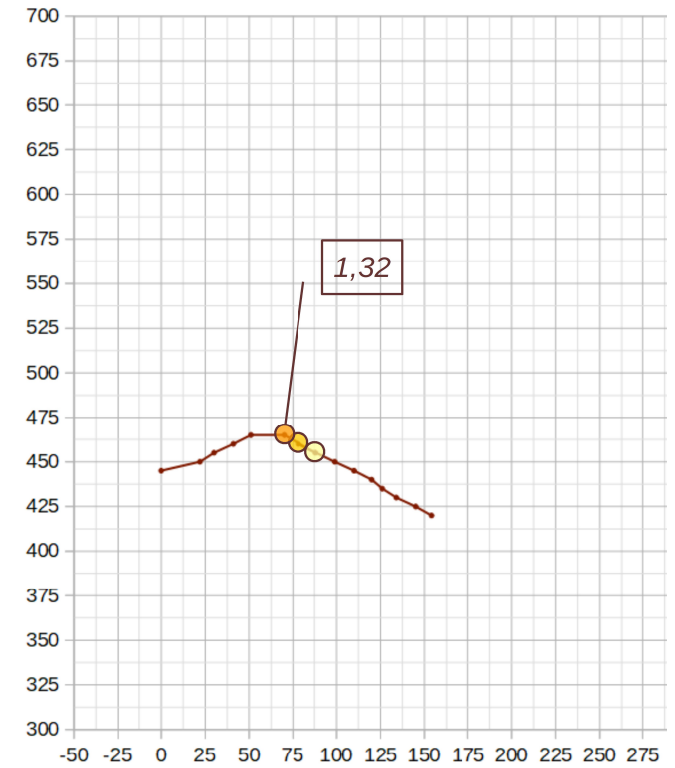
- ST = 1,0
- ST = 1,1
- ST = 1,2
- ST = 1,3
- ST = 1,4

### SEZIONE TOPOGRAFICA 2 - MONZUNO



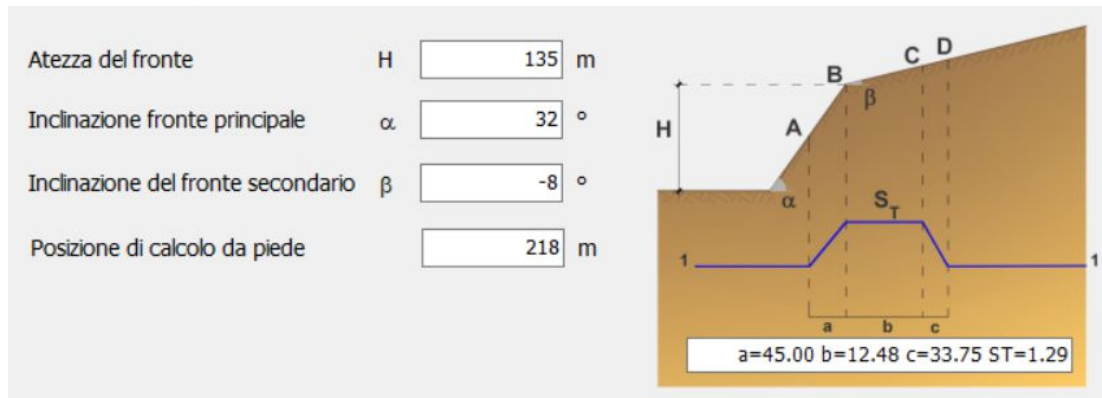
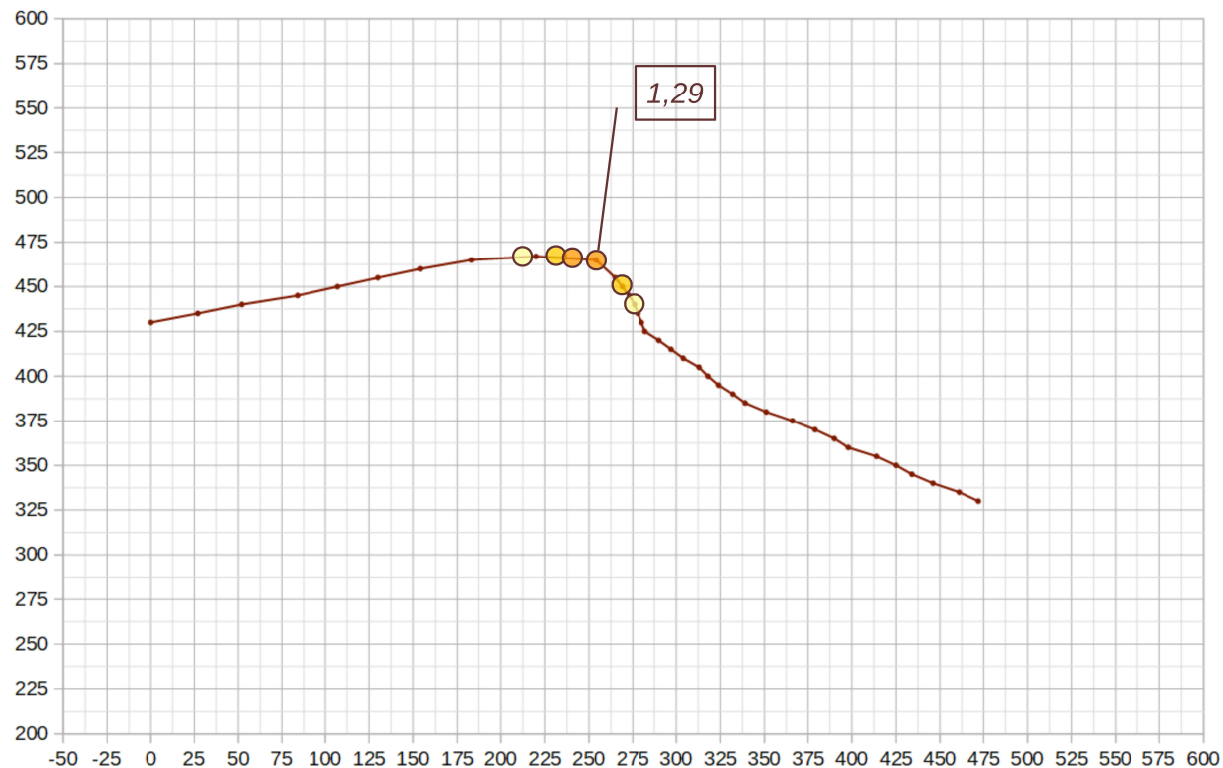
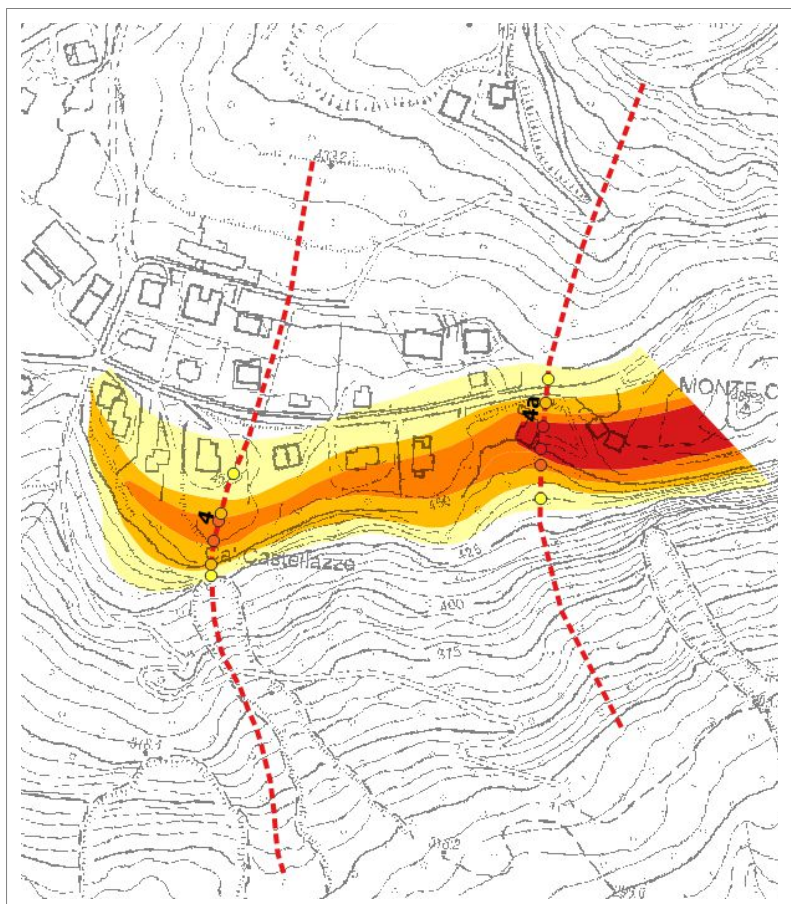
### SEZIONE TOPOGRAFICA 3 - MONZUNO

- ST = 1,0
- ST = 1,1
- ST = 1,2
- ST = 1,3
- ST = 1,4

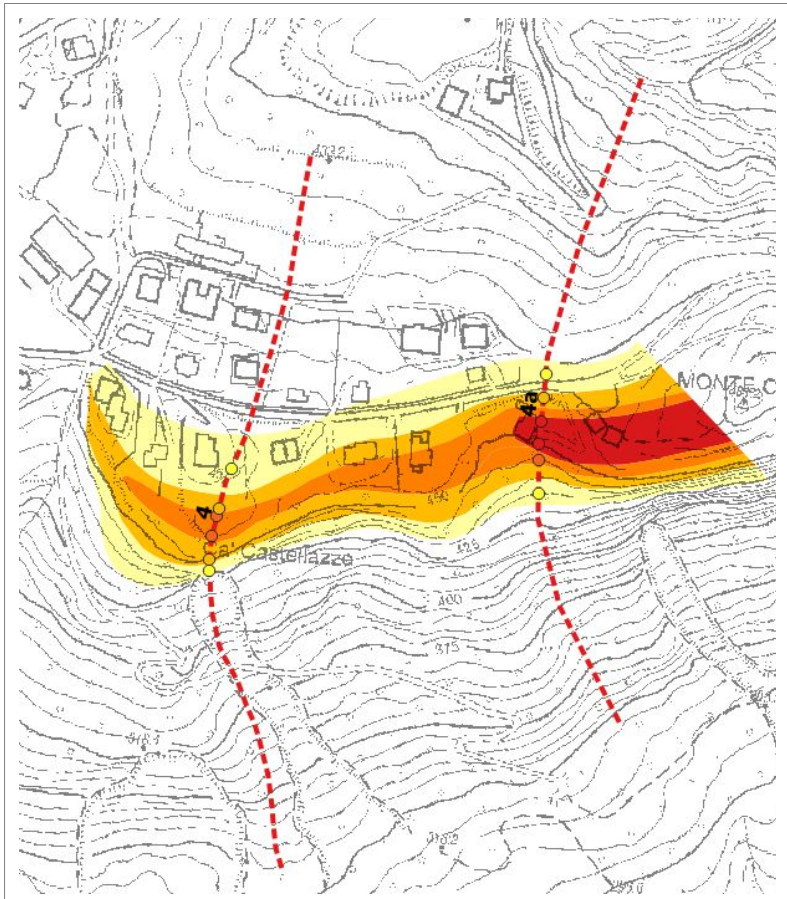


### SEZIONE TOPOGRAFICA 4 - MONZUNO

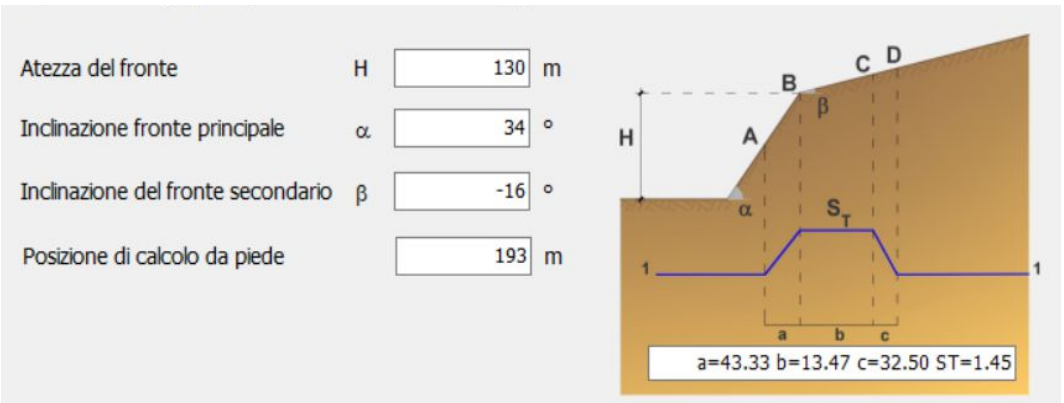
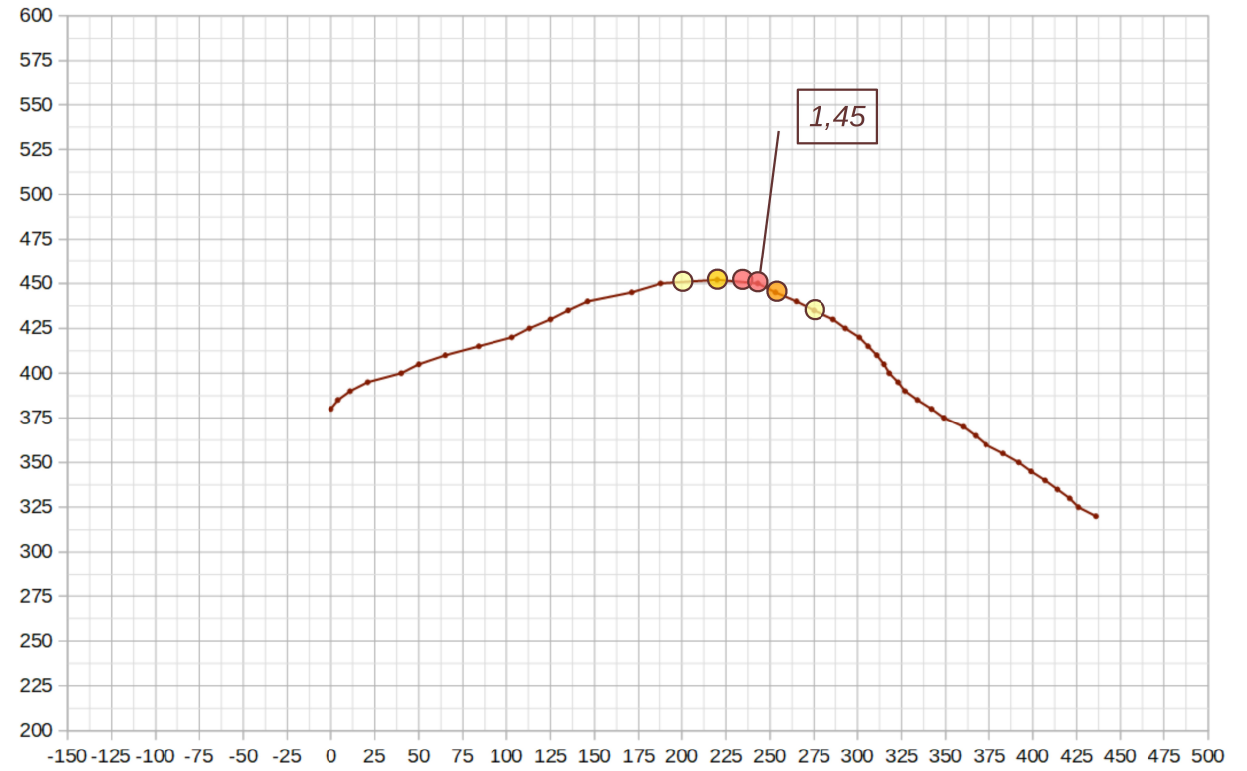
- ST = 1,0
- ST = 1,1
- ST = 1,2
- ST = 1,3
- ST = 1,4



- ST = 1,0
- ST = 1,1
- ST = 1,2
- ST = 1,3
- ST = 1,4

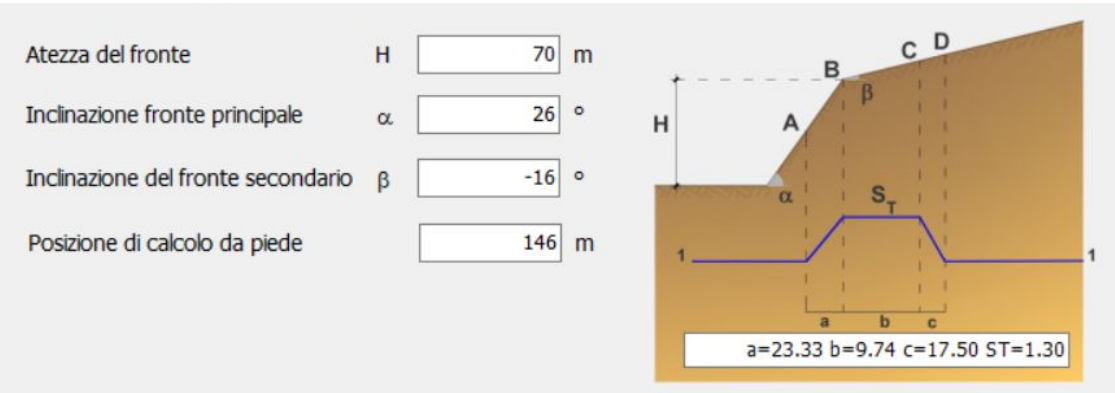
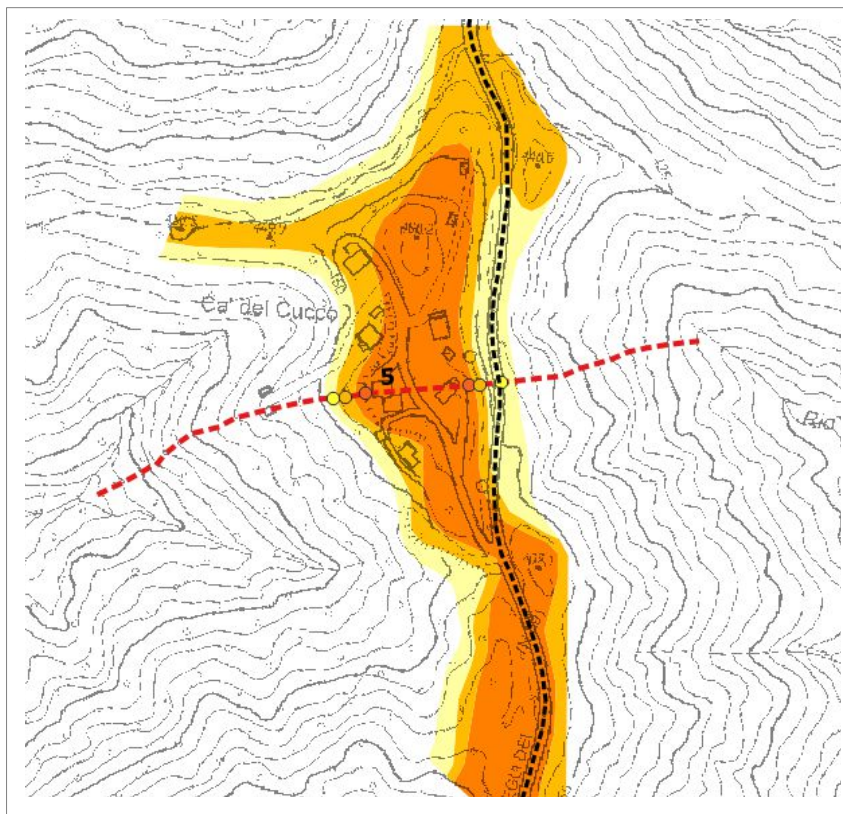
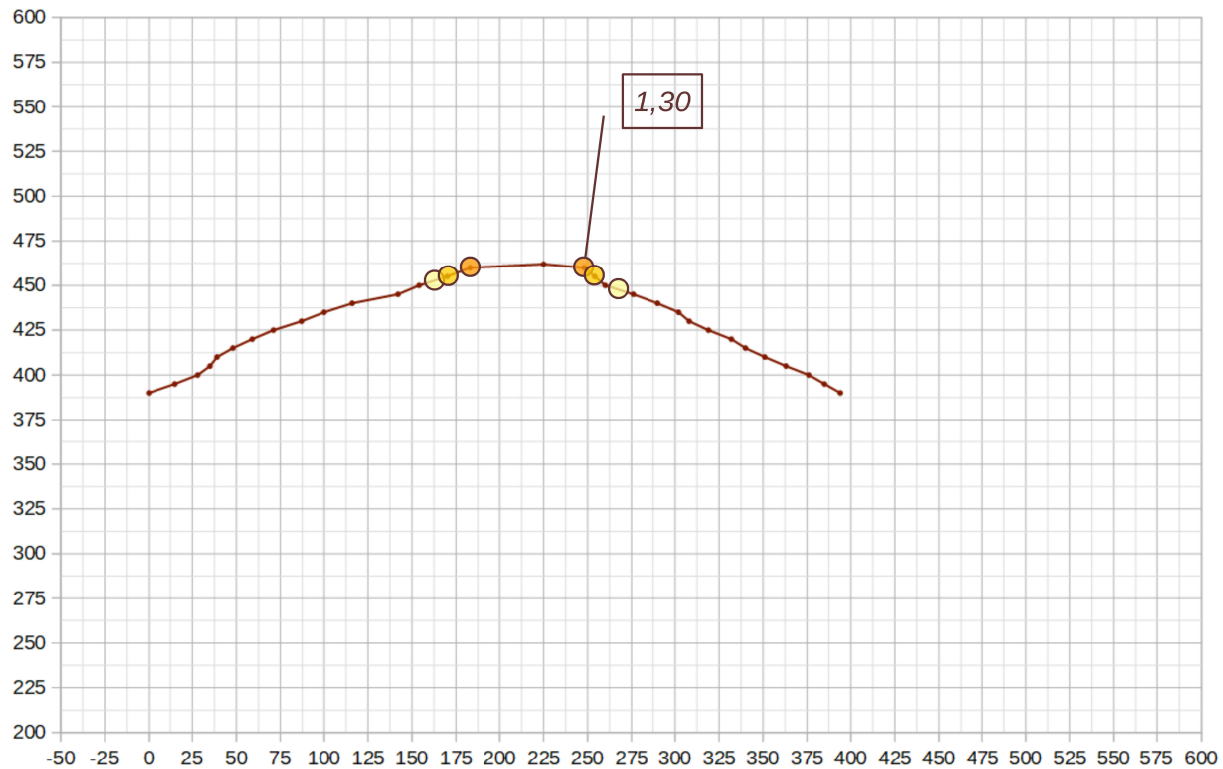


SEZIONE TOPOGRAFICA 4b - MONZUNO



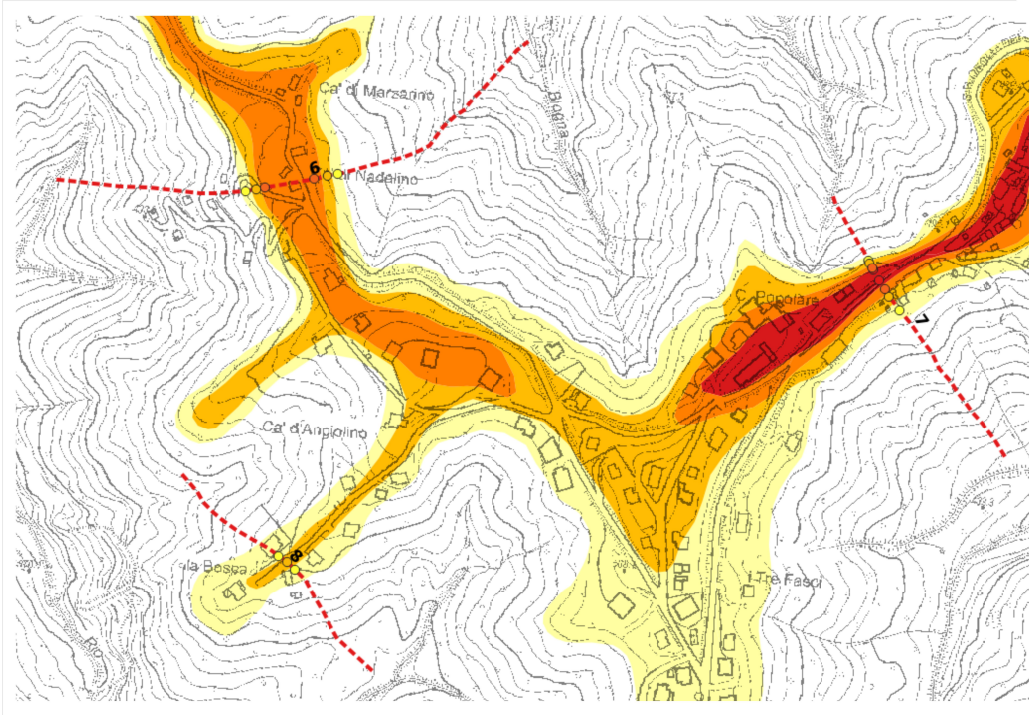
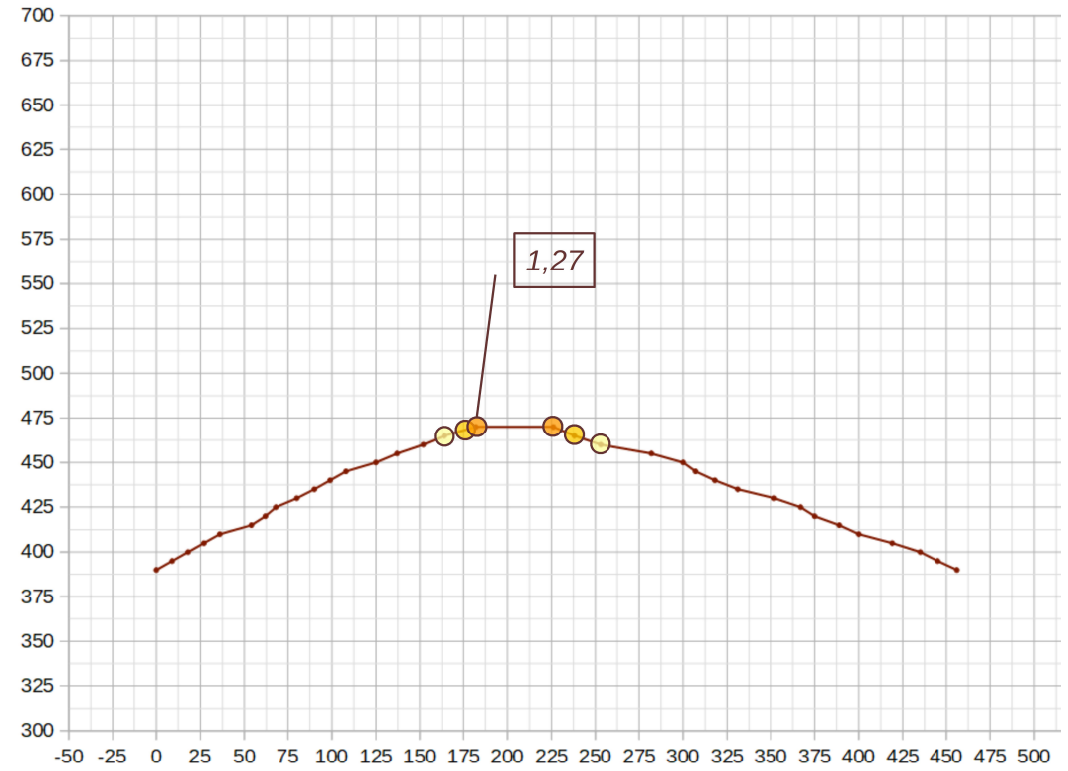
- ST = 1,0
- ST = 1,1
- ST = 1,2
- ST = 1,3
- ST = 1,4

### SEZIONE TOPOGRAFICA 5 - MONZUNO

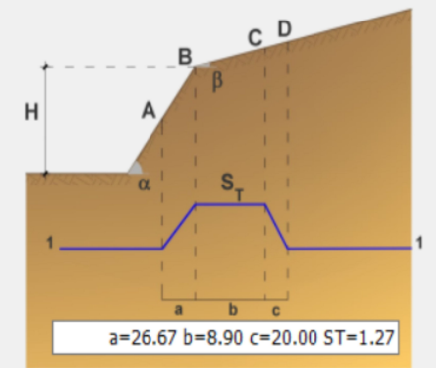


- ST = 1,0
- ST = 1,1
- ST = 1,2
- ST = 1,3
- ST = 1,4

### SEZIONE TOPOGRAFICA 6 - MONZUNO



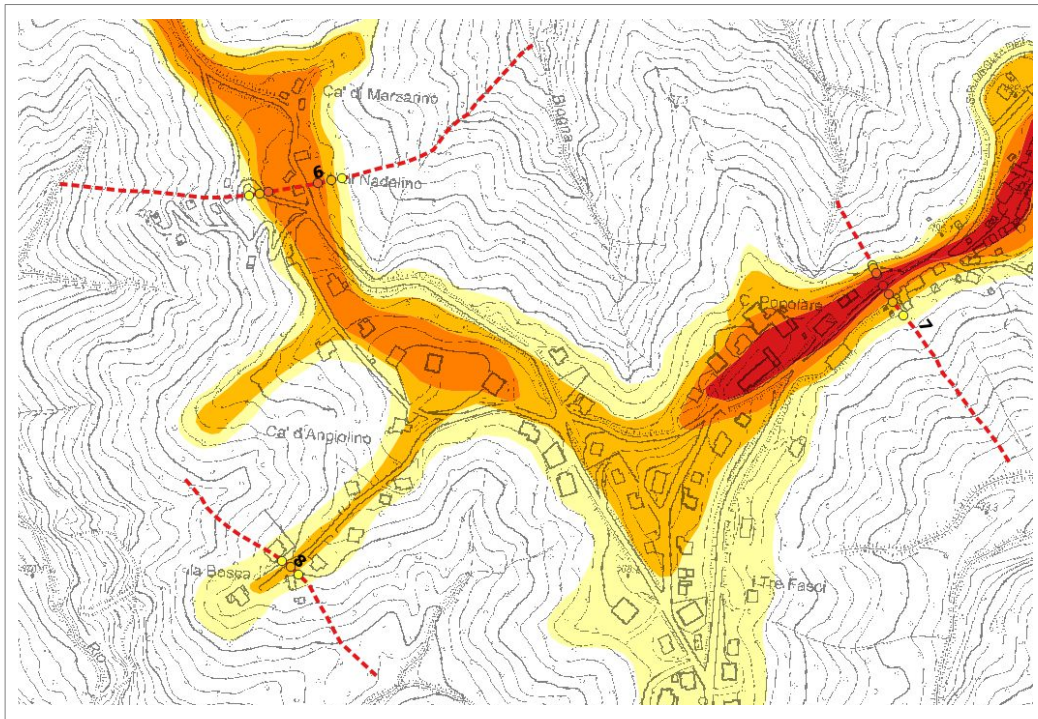
Atezza del fronte	H	<input type="text" value="80"/>	m
Inclinazione fronte principale	$\alpha$	<input type="text" value="24"/>	°
Inclinazione del fronte secondario	$\beta$	<input type="text" value="-16"/>	°
Posizione di calcolo da piede		<input type="text" value="182"/>	m



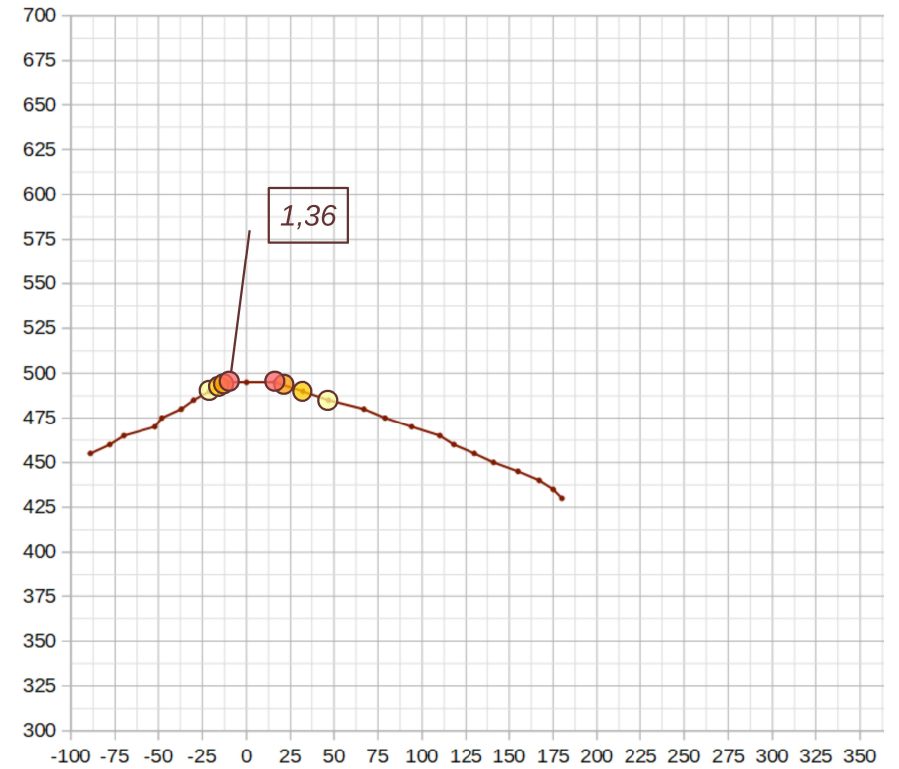
$a=26.67$   $b=8.90$   $c=20.00$   $ST=1.27$



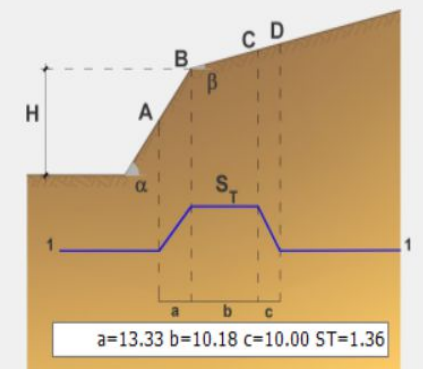
- ST = 1,0
- ST = 1,1
- ST = 1,2
- ST = 1,3
- ST = 1,4



### SEZIONE TOPOGRAFICA 7 - MONZUNO

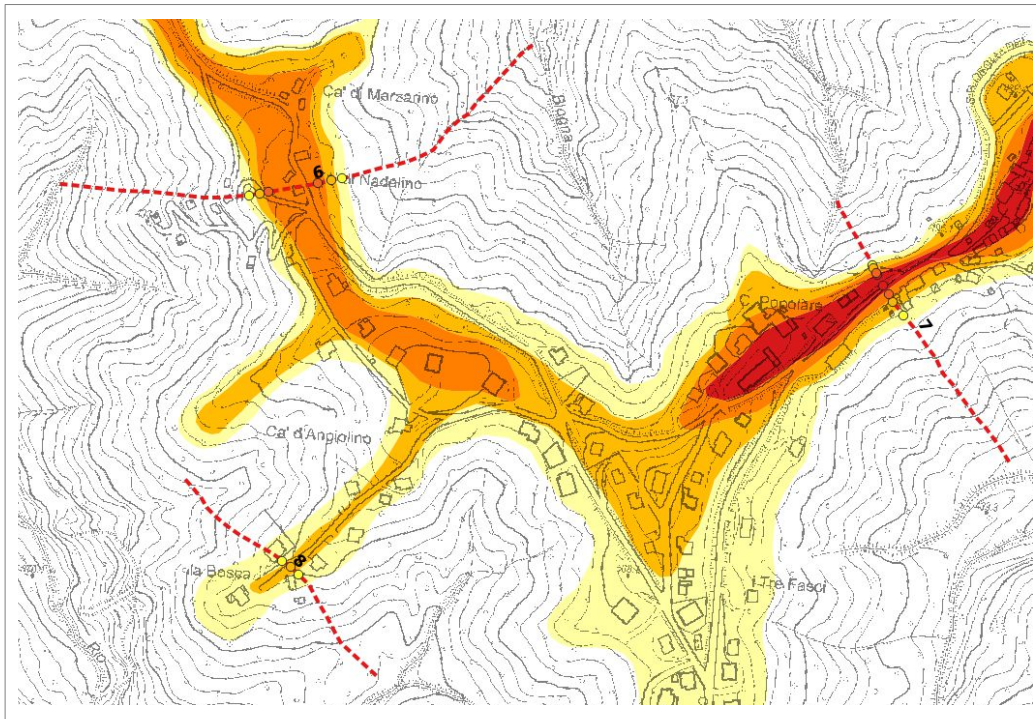
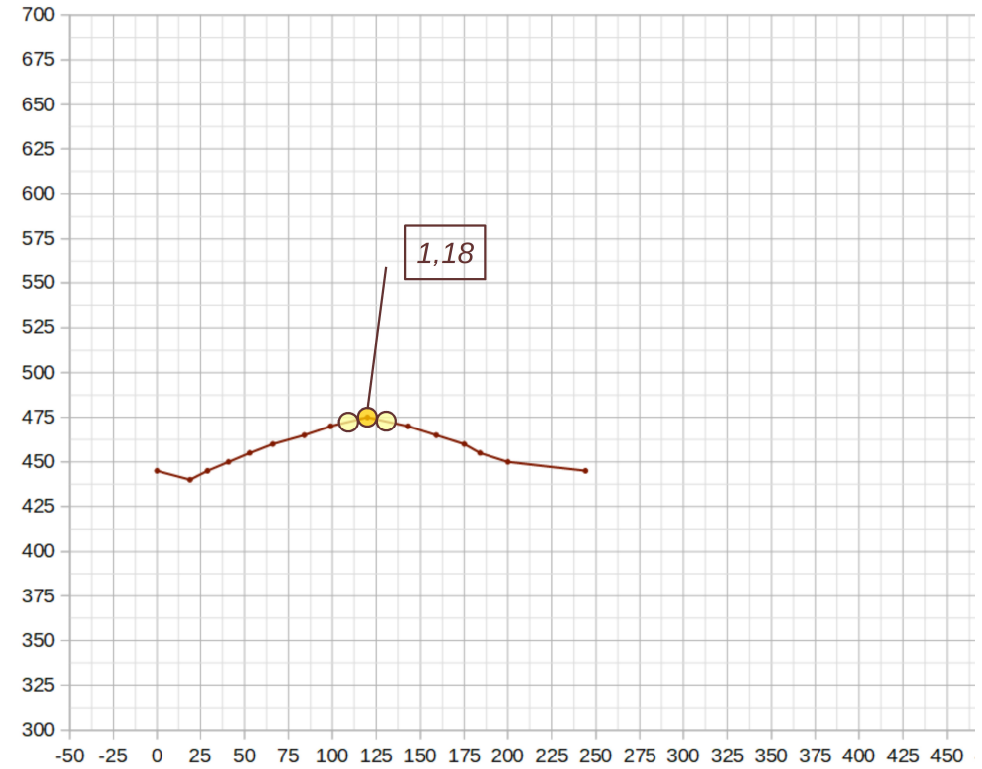


Atezza del fronte	H	<input type="text" value="40"/>	m
Inclinazione fronte principale	$\alpha$	<input type="text" value="27"/>	°
Inclinazione del fronte secondario	$\beta$	<input type="text" value="-19"/>	°
Posizione di calcolo da piede		<input type="text" value="79"/>	m

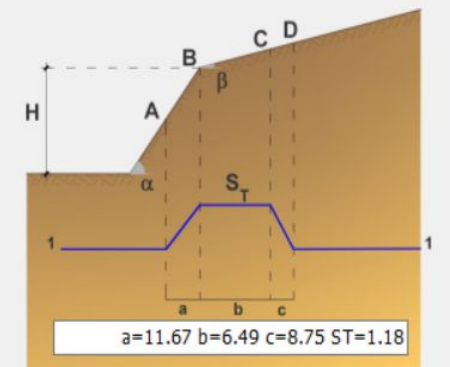


### SEZIONE TOPOGRAFICA 8 - MONZUNO

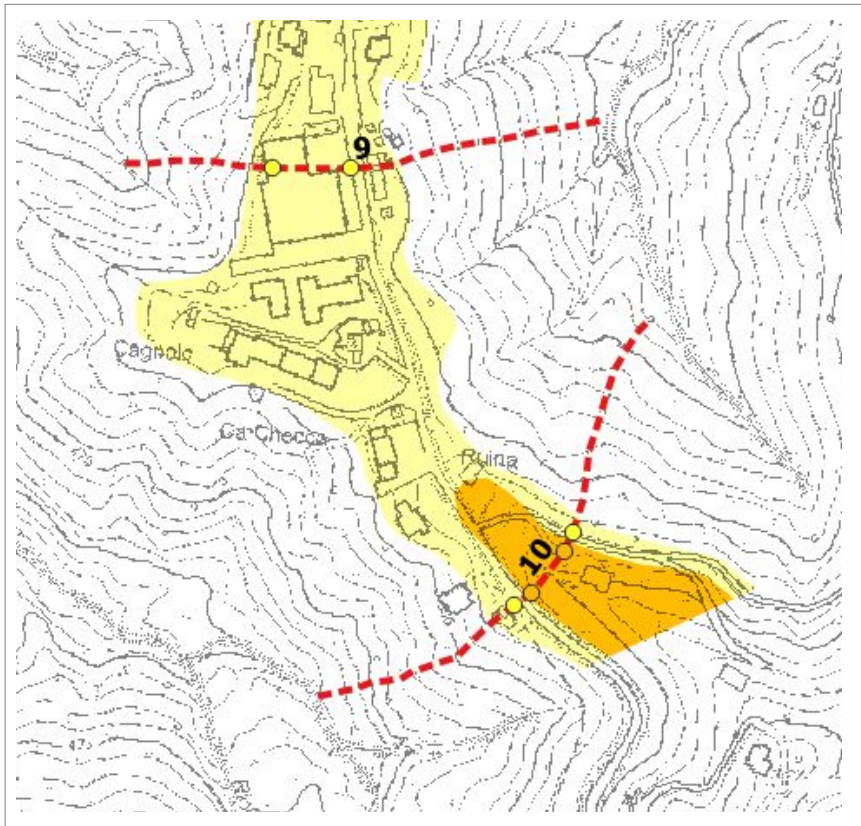
- ST = 1,0
- ST = 1,1
- ST = 1,2
- ST = 1,3
- ST = 1,4



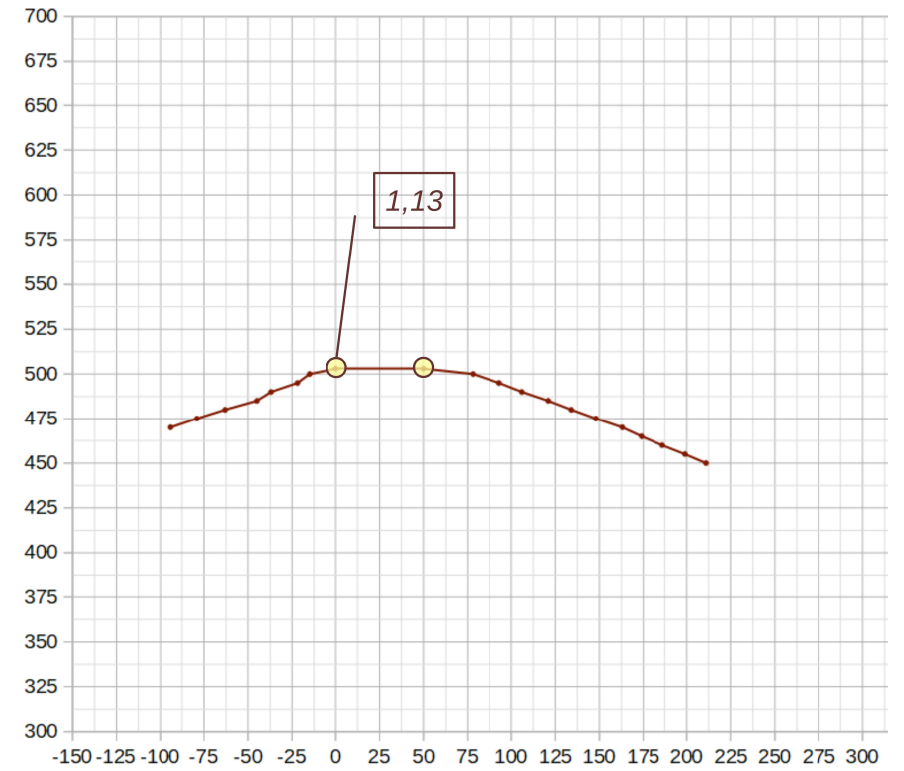
- Atezza del fronte H  m
- Inclinazione fronte principale  $\alpha$   °
- Inclinazione del fronte secondario  $\beta$   °
- Posizione di calcolo da piede  m



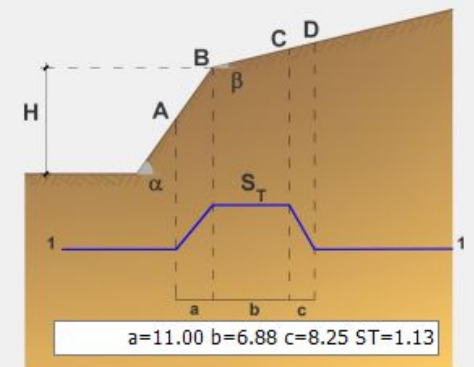
- ST = 1,0
- ST = 1,1
- ST = 1,2
- ST = 1,3
- ST = 1,4



SEZIONE TOPOGRAFICA 9 - MONZUNO

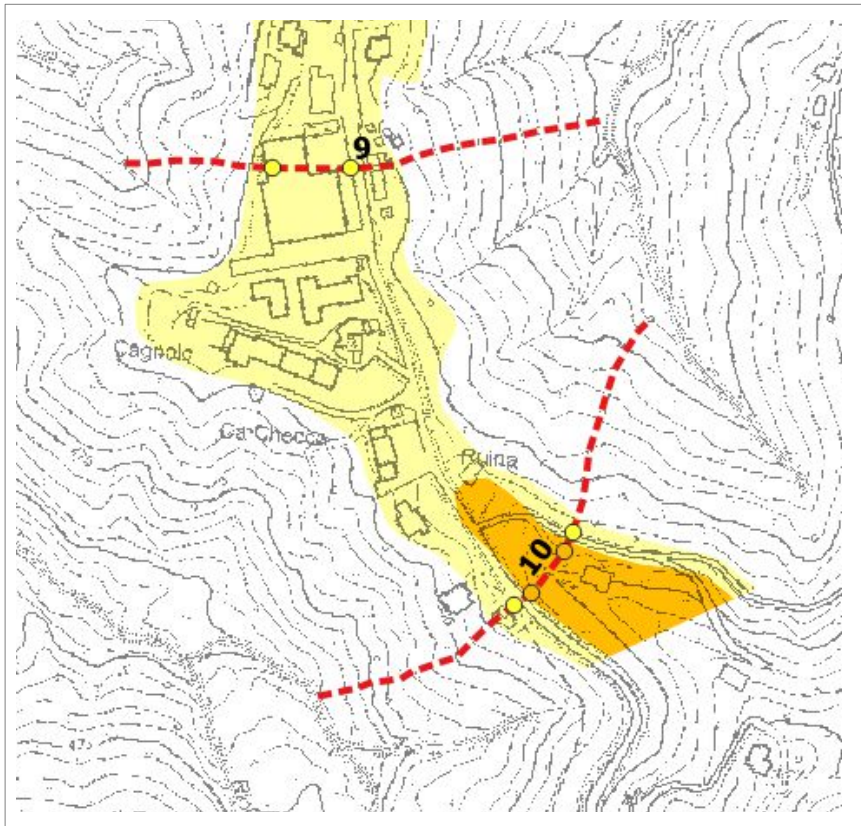
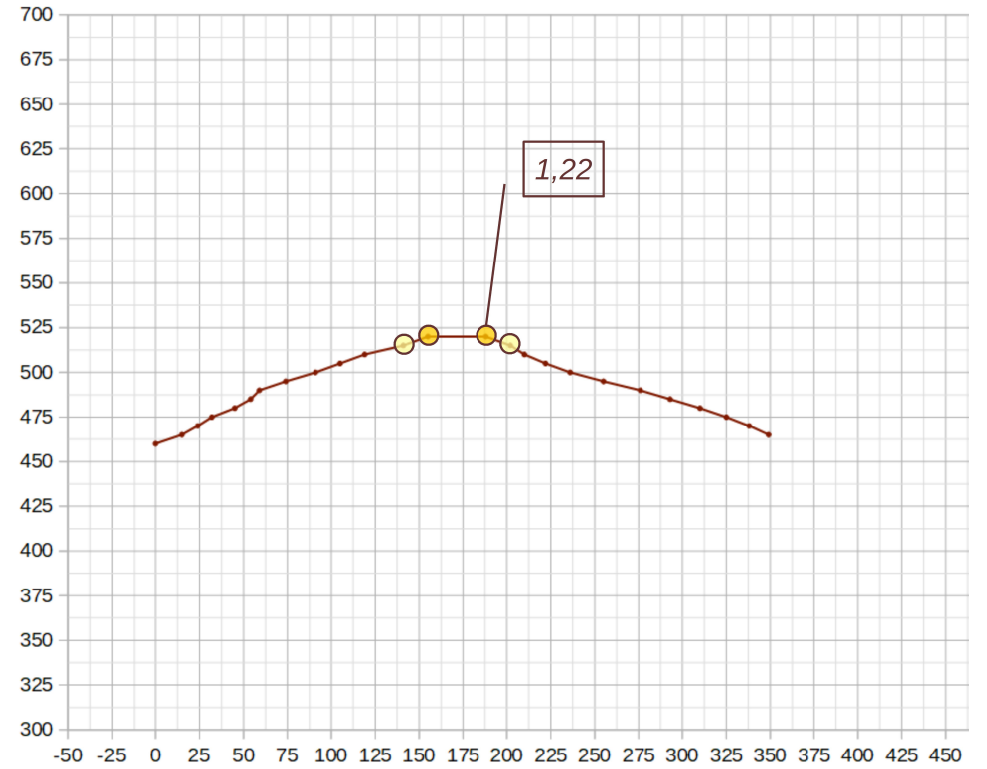


Atezza del fronte	H	<input type="text" value="33"/>	m
Inclinazione fronte principale	$\alpha$	<input type="text" value="19"/>	°
Inclinazione del fronte secondario	$\beta$	<input type="text" value="-14"/>	°
Posizione di calcolo da piede		<input type="text" value="94"/>	m

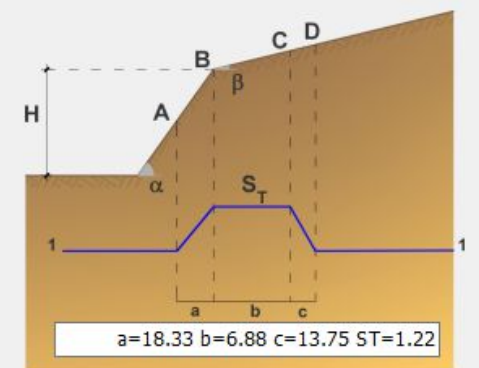


- ST = 1,0
- ST = 1,1
- ST = 1,2
- ST = 1,3
- ST = 1,4

### SEZIONE TOPOGRAFICA 10 - MONZUNO

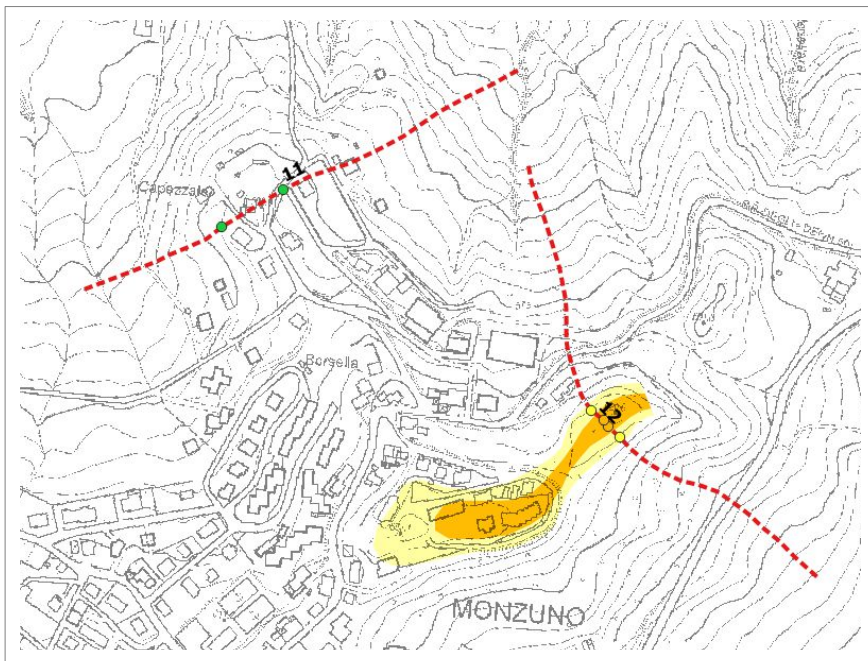
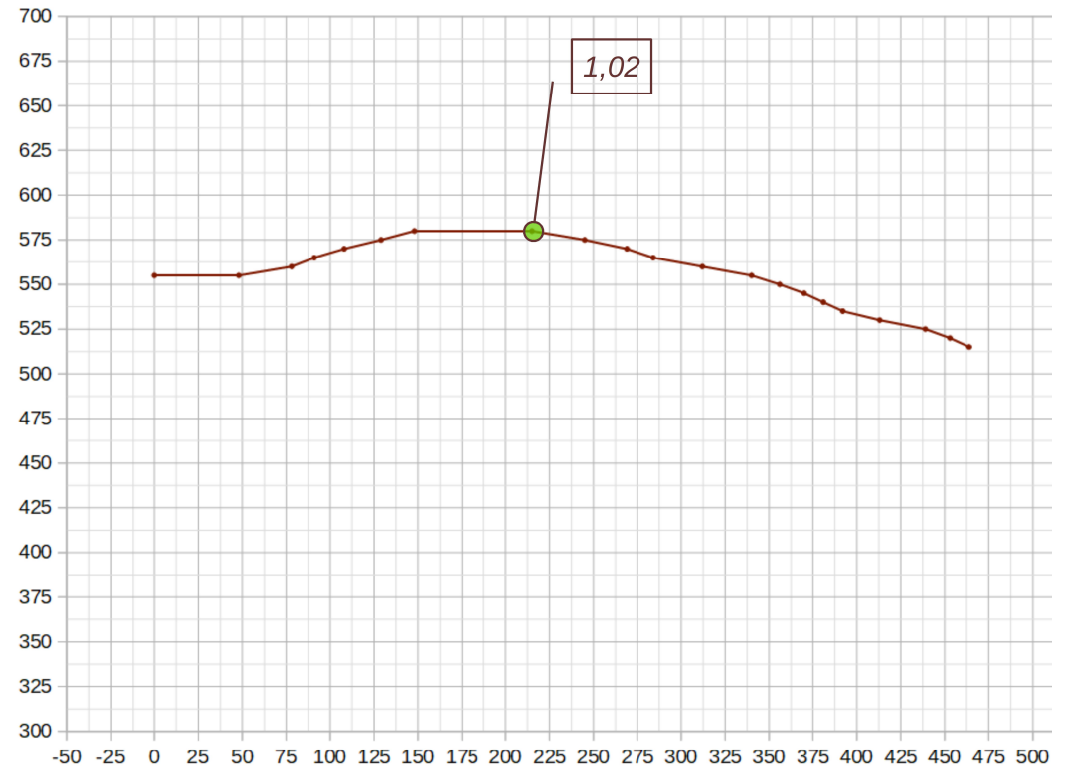


Atezza del fronte	H	<input type="text" value="55"/>	m
Inclinazione fronte principale	$\alpha$	<input type="text" value="19"/>	°
Inclinazione del fronte secondario	$\beta$	<input type="text" value="-18"/>	°
Posizione di calcolo da piede		<input type="text" value="161"/>	m

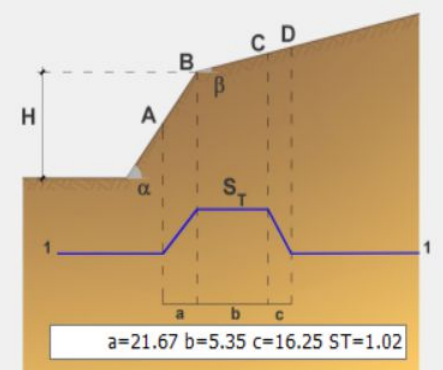


- ST = 1,0
- ST = 1,1
- ST = 1,2
- ST = 1,3
- ST = 1,4

### SEZIONE TOPOGRAFICA 11 - MONZUNO

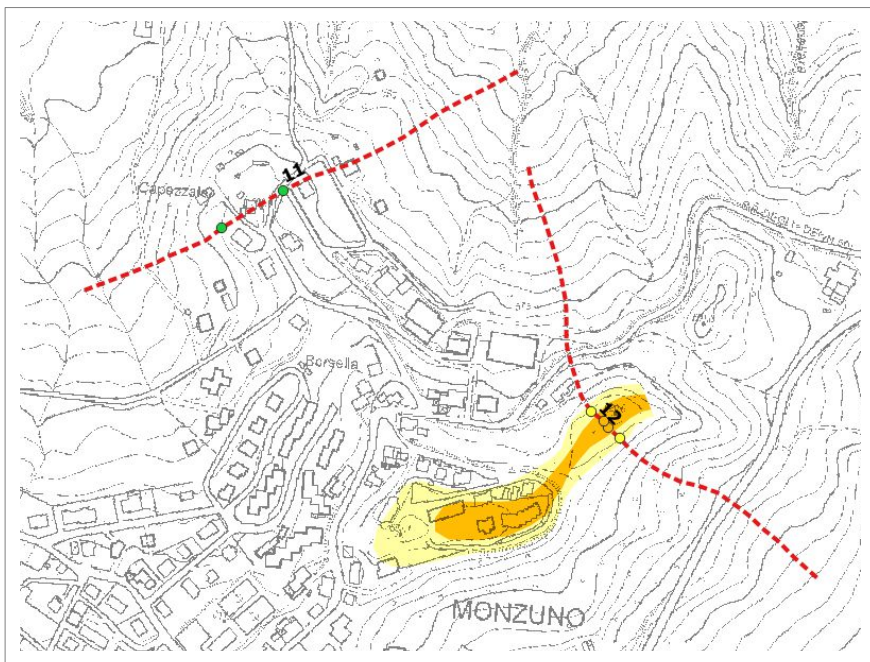
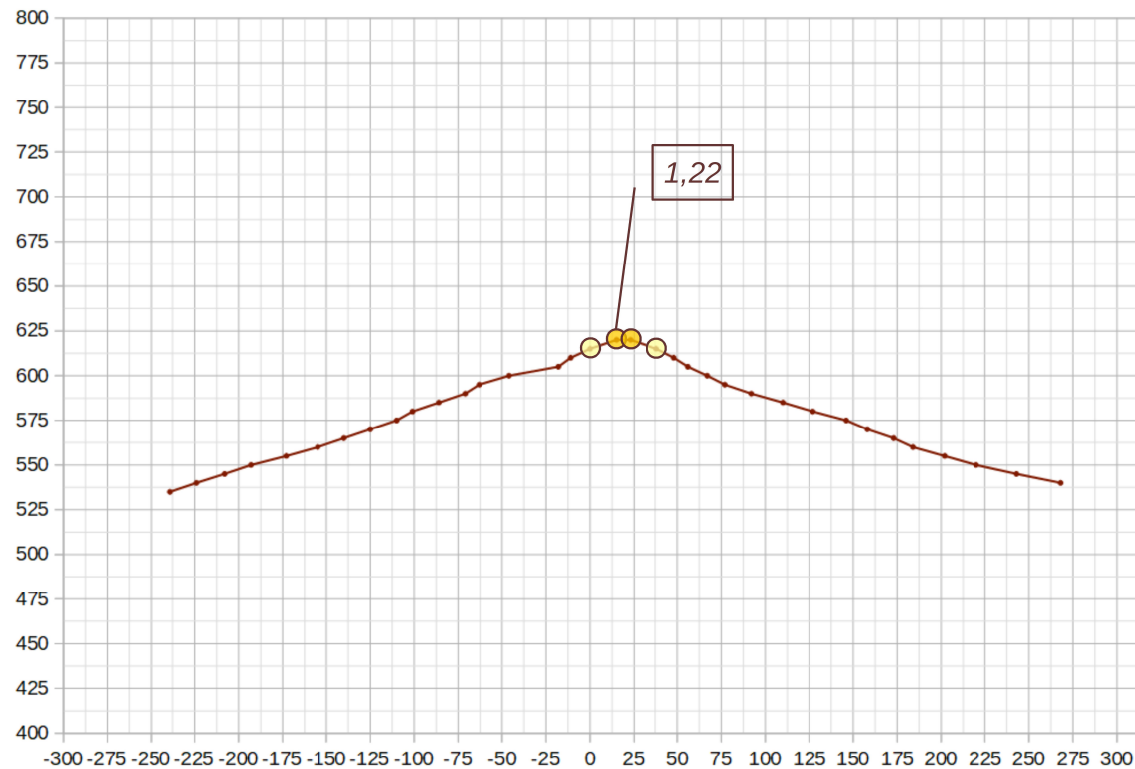


Atezza del fronte	H	<input type="text" value="65"/>	m
Inclinazione fronte principale	$\alpha$	<input type="text" value="15"/>	°
Inclinazione del fronte secondario	$\beta$	<input type="text" value="-9"/>	°
Posizione di calcolo da piede		<input type="text" value="249"/>	m

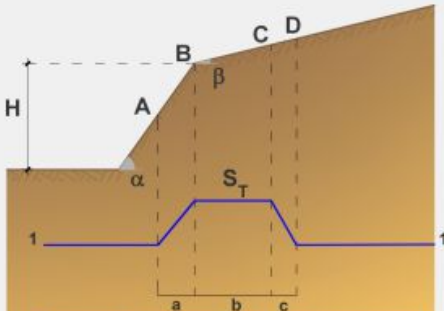


- ST = 1,0
- ST = 1,1
- ST = 1,2
- ST = 1,3
- ST = 1,4

### SEZIONE TOPOGRAFICA 12 - MONZUNO

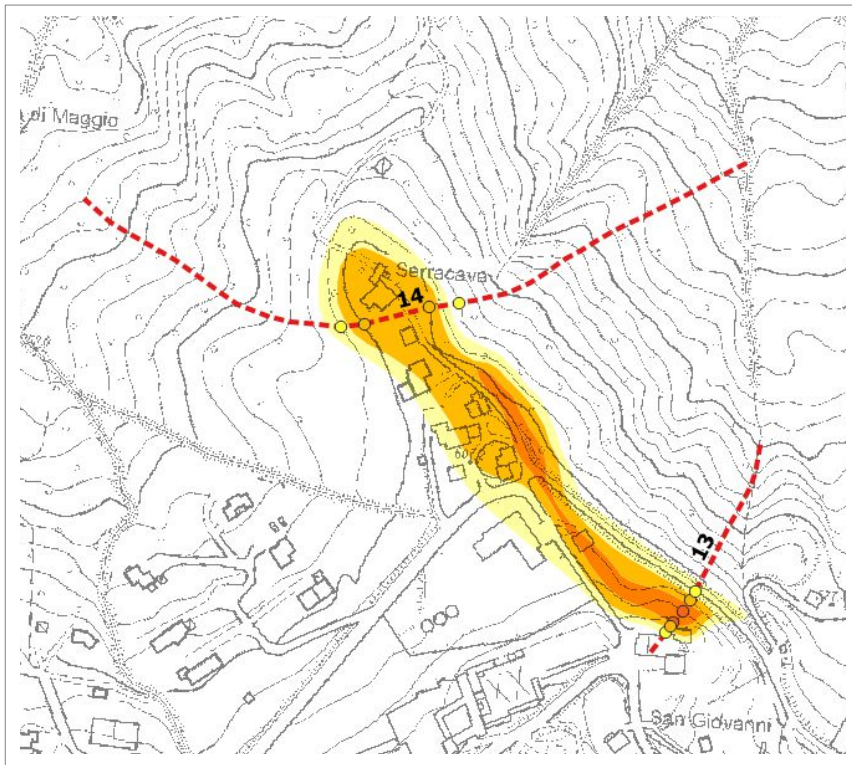


Atezza del fronte	H	<input type="text" value="85"/>	m
Inclinazione fronte principale	$\alpha$	<input type="text" value="19"/>	°
Inclinazione del fronte secondario	$\beta$	<input type="text" value="-18"/>	°
Posizione di calcolo da piede		<input type="text" value="254"/>	m

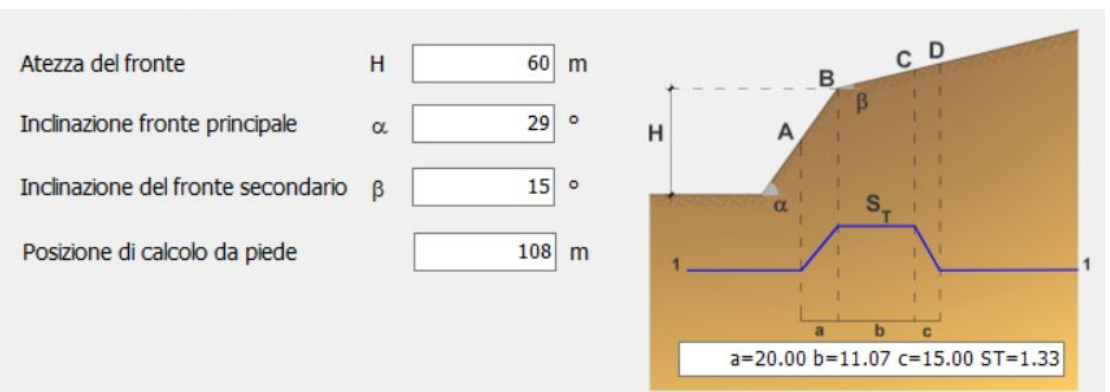
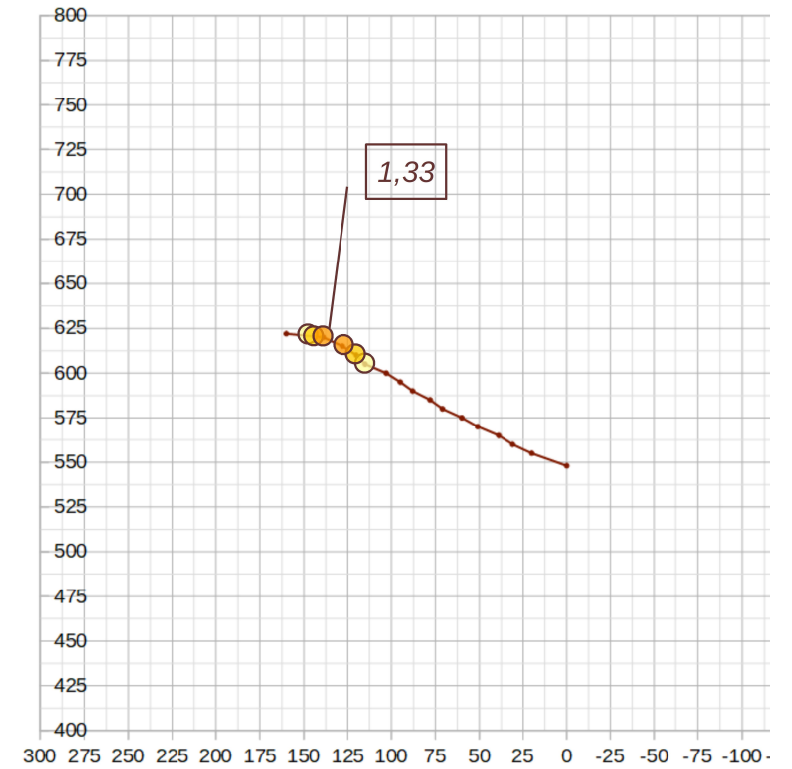


a=28.33 b=6.88 c=21.25 ST=1.22

- ST = 1,0
- ST = 1,1
- ST = 1,2
- ST = 1,3
- ST = 1,4

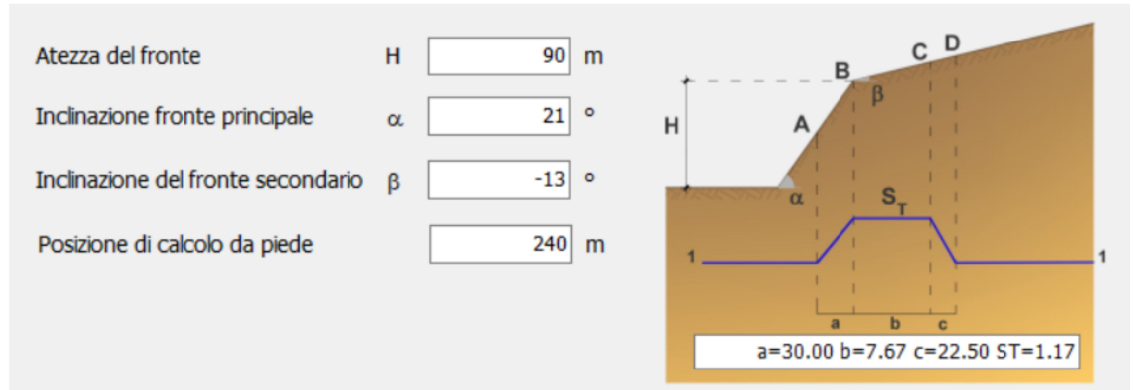
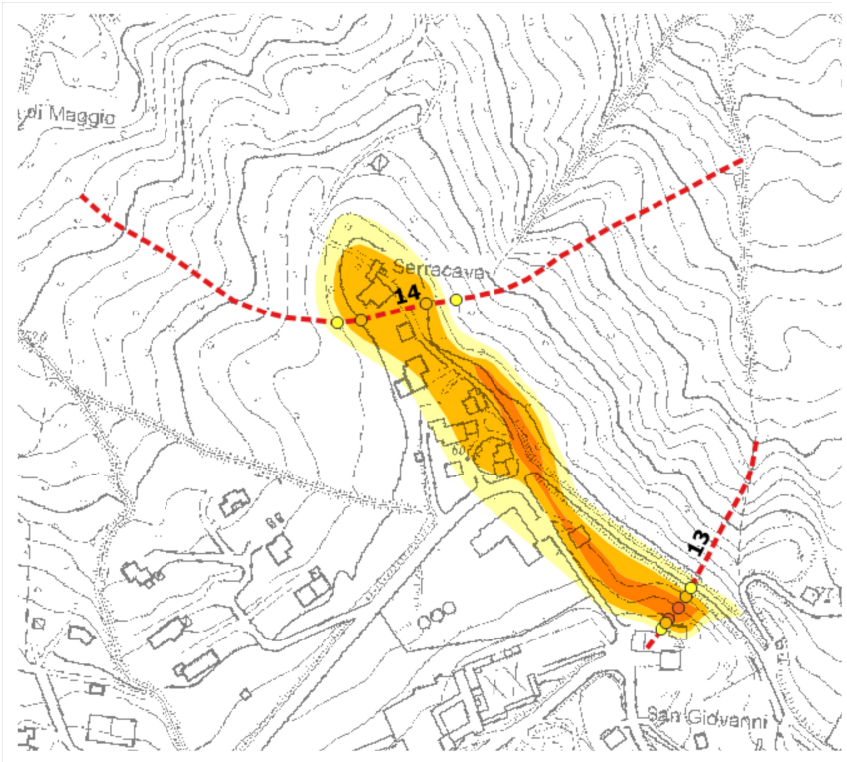


SEZIONE TOPOGRAFICA 13 - MONZUNO



- ST = 1,0
- ST = 1,1
- ST = 1,2
- ST = 1,3
- ST = 1,4

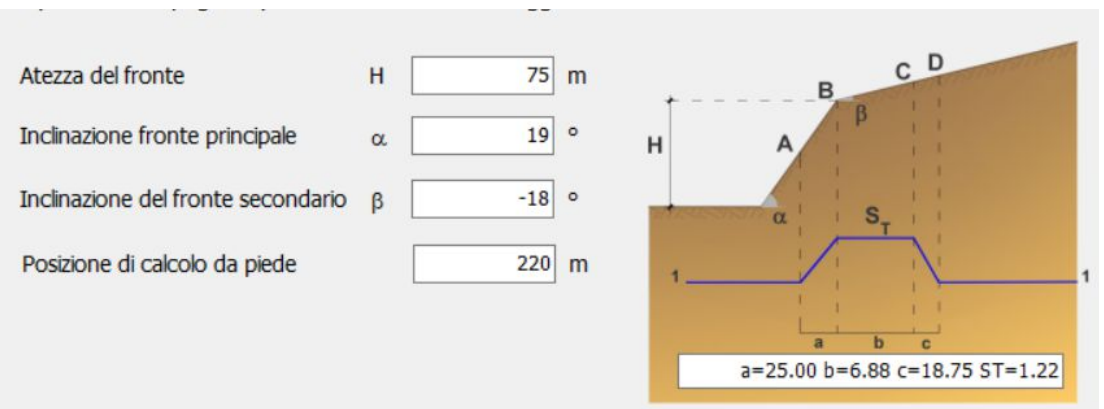
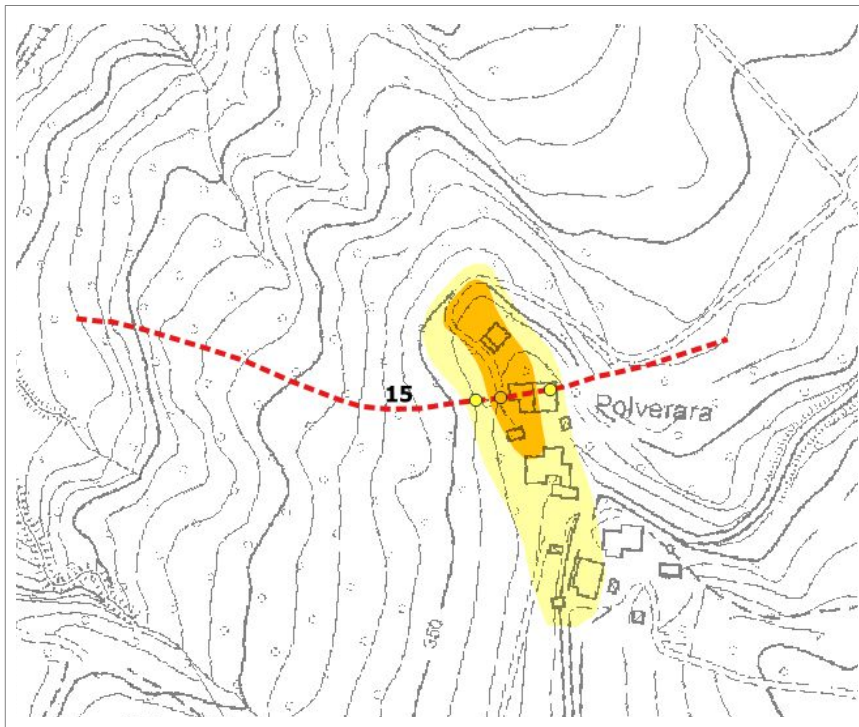
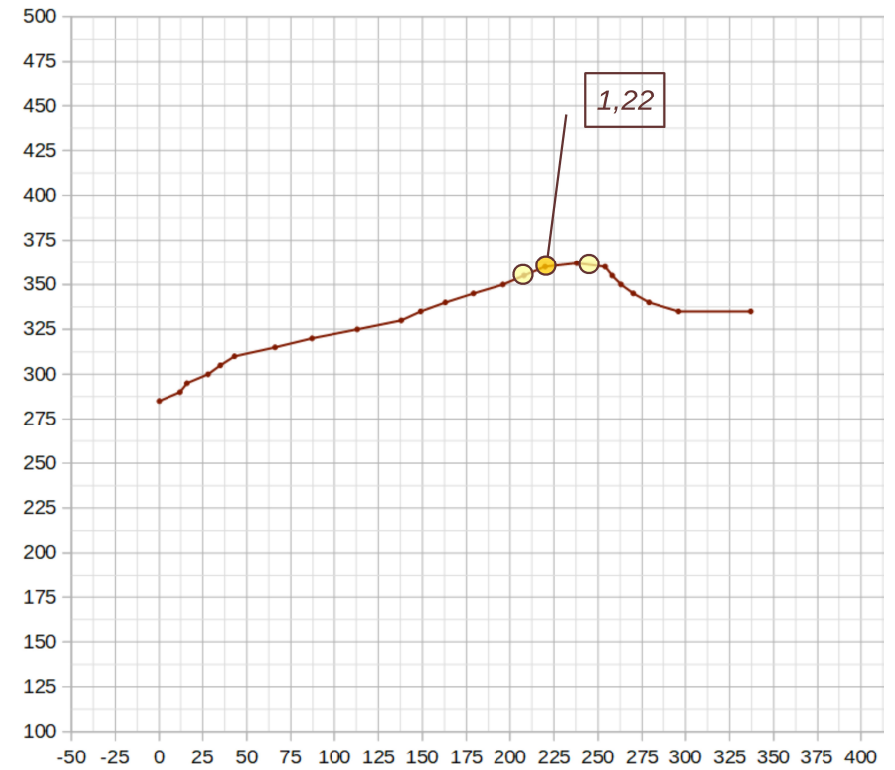
### SEZIONE TOPOGRAFICA 14 - MONZUNO





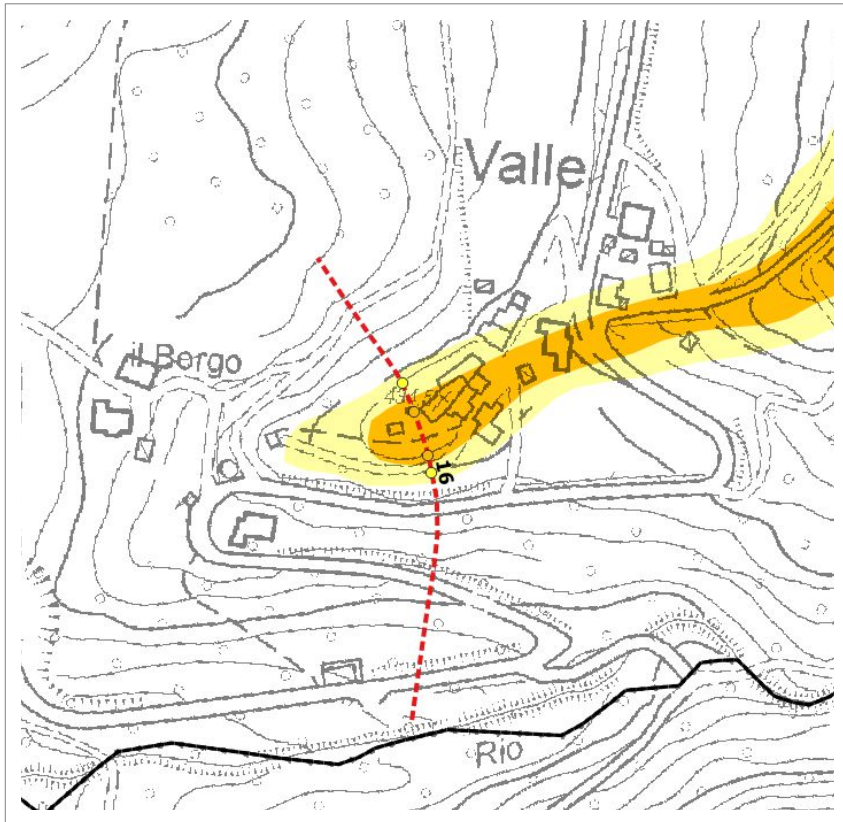
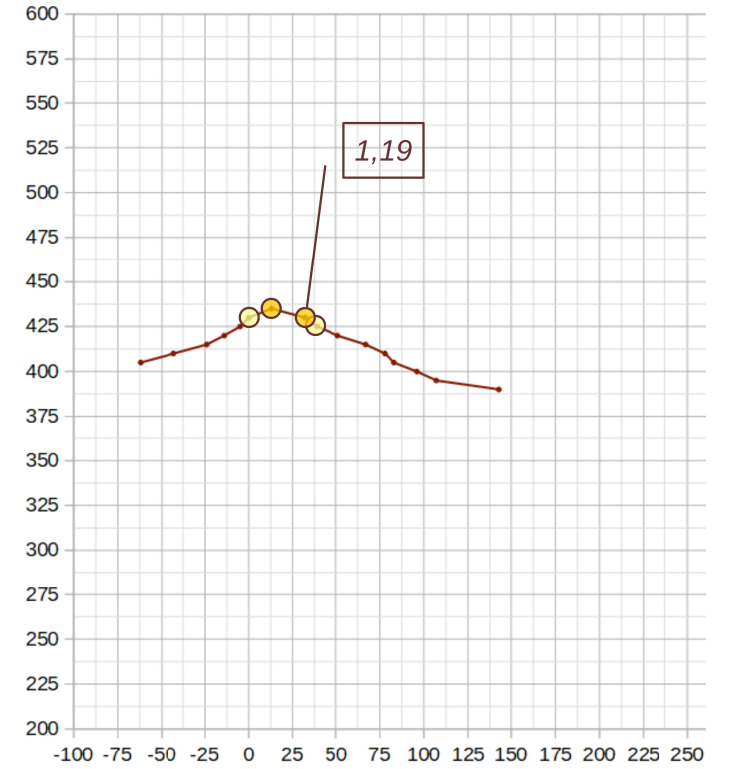
- ST = 1,0
- ST = 1,1
- ST = 1,2
- ST = 1,3
- ST = 1,4

SEZIONE TOPOGRAFICA 15 - MONZUNO



- ST =1,0
- ST =1,1
- ST =1,2
- ST =1,3
- ST =1,4

SEZIONE TOPOGRAFICA 16 - MONZUNO



Atezza del fronte	H	<input type="text" value="40"/>	m
Inclinazione fronte principale	$\alpha$	<input type="text" value="20"/>	°
Inclinazione del fronte secondario	$\beta$	<input type="text" value="-15"/>	°
Posizione di calcolo da piede		<input type="text" value="111"/>	m

