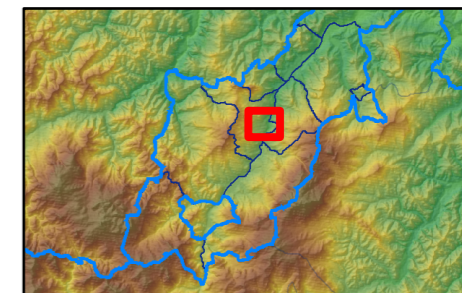
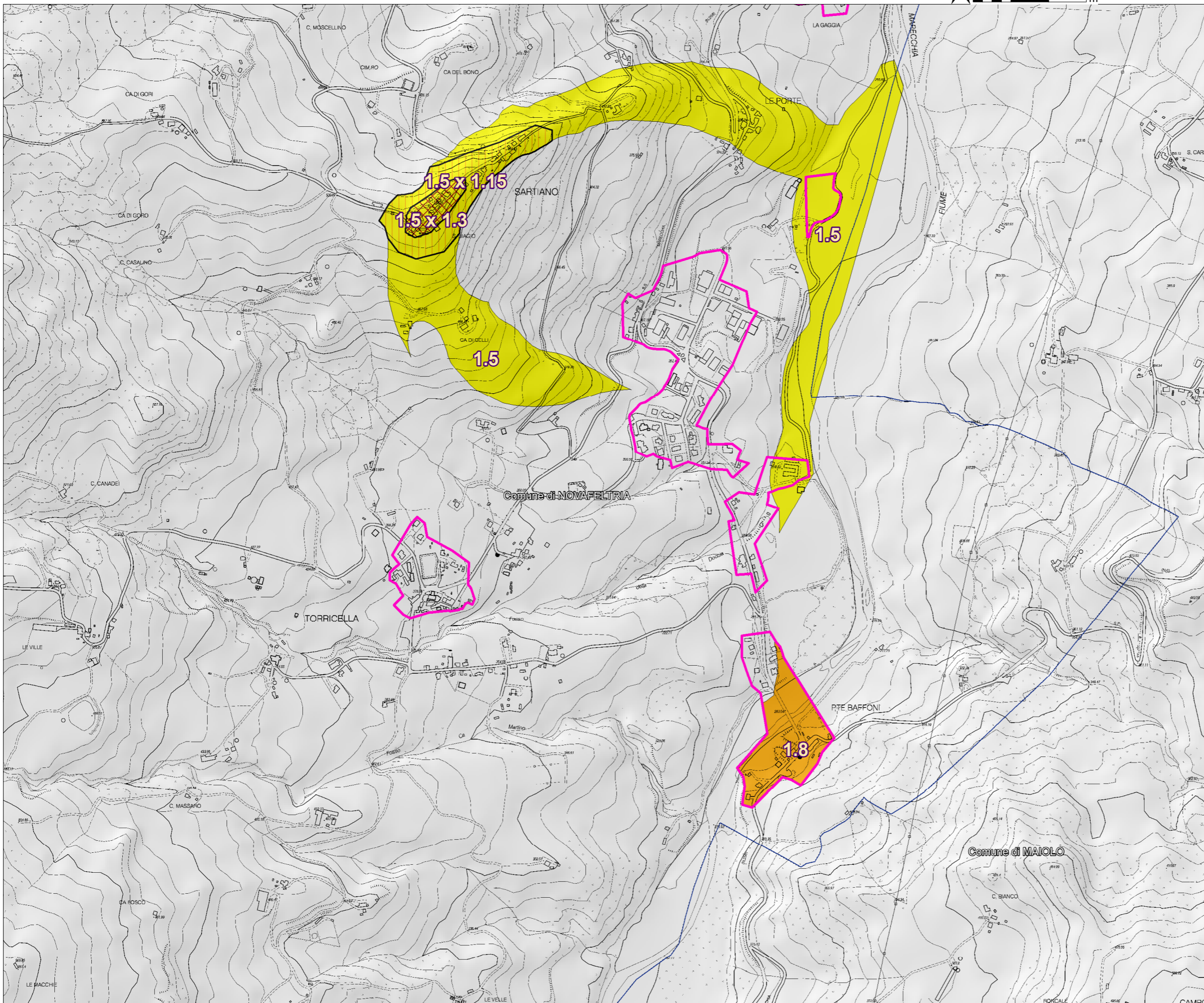


NOVAFELTRIA  
torricella



perimetri\_urbani\_expansioni



Profili topografici

- a
- b
- c

limiti FaPGA

- certo
- incerto

valori di amplificazione topografica medi

- 1.1
- 1.15
- 1.2

valori di amplificazione topografica massimi

- 1.1
- 1.15
- 1.2
- 1.3
- 1.4

FaPGA

- 1
- 1.2
- 1.5
- 1.8
- 2.1
- 2.3